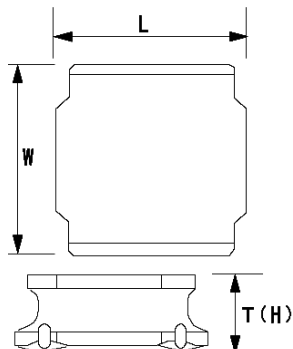


SMD Power Inductors (NR series)

NR5040T220M



■ Features

- Item Summary
22 μ H ($\pm 20\%$), 1600mA, 1400mA
- Lifecycle Stage
Mass Production
- Standard packaging quantity (minimum)
Taping 1500pcs

■ Products characteristics table

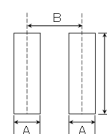
CaseSize (EIA/JIS)	~/5040
Inductance	22 μ H ($\pm 20\%$)
Inductance Measuring Frequency	100kHz
Rated Current -Saturation Current	1600mA
Rated Current -Temperature Rise Current	1400mA
DC Resistance (max)	0.1638 Ω
Avg. of DC.Resistance	0.126 Ω
Temperature Range	-25°C to 120°C
Self-resonant Frequency (min)	9MHz
RoHS Compliance	Yes
Halogen Free	Yes
Soldering Method	Reflow

■ External Dimensions

L	4.9mm ± 0.2
W	4.9mm ± 0.2
H	4mm max

■ Recommended Land Patterns

【推奨ランドパターン】 実装上の注意 ・実装状態を確認の上ご使用ください。また、ご購入の際は、 本製品のほんたひ付けはリフローはんだ工法に準じます。	
【Recommended Land Patterns】 Surface Mounting ・Mounting and soldering conditions should be checked beforehand. ・Applicable soldering process to these products is reflow soldering only.	



SMD Power Inductors (NR series/NR series H type/S type /V type)			
Type	A	B	C
NRSS010,	1.5	3.6	4
NRSS012,			
NRSS014,			
NRSS020,			
NRSS024,			
NRSS030,			
NR 5040, NRSS040			

unit:mm