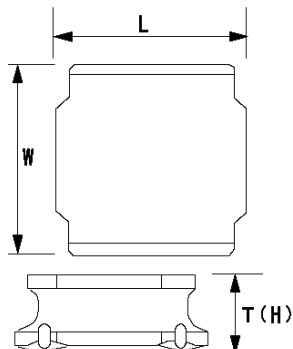


SMD Power Inductors (NR series)

NR5040T1R5N



■ Features

- Item Summary
1.5 μ H($\pm 30\%$), 6000mA, 3600mA
- Lifecycle Stage
Mass Production
- Standard packaging quantity (minimum)
Taping 1500pcs

■ Products characteristics table

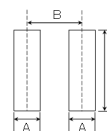
CaseSize (EIA/JIS)	~/5040
Inductance	1.5 μ H($\pm 30\%$)
Inductance Measuring Frequency	100kHz
Rated Current -Saturation Current	6000mA
Rated Current -Temperature Rise Current	3600mA
DC Resistance (max)	0.026 Ω
Avg. of DC.Resistance	0.02 Ω
Temperature Range	-25°C to 120°C
Self-resonant Frequency (min)	60MHz
RoHS Compliance	Yes
Halogen Free	Yes
Soldering Method	Reflow

■ External Dimensions

L	4.9mm ± 0.2
W	4.9mm ± 0.2
H	4.1mm max

■ Recommended Land Patterns

【推奨ランドパターン】 実装上の注意 ・実装状態を確認の上ご使用ください。また、ご購入の際は、本製品のハンダ付けはリフローハンダ工法に限り、手付けは不可とさせていただきます。	
【Recommended Land Patterns】 Surface Mounting ・Mounting and soldering conditions should be checked beforehand. ・Applicable soldering process to these products is reflow soldering only.	



SMD Power Inductors (NR series/NR series H type/S type /V type)			
Type	A	B	C
NR5010, NR5012, NR5014, NR5020, NR5024, NR5030, NR 5040, NR5040	1.5	3.6	4

unit:mm