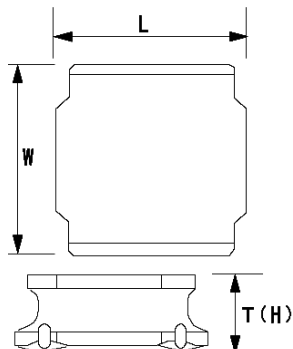


SMD Power Inductors (NR series)

NR4010T150M



■ Features

- Item Summary
15 μ H ($\pm 20\%$), 470mA, 510mA
- Lifecycle Stage
Mass Production
- Standard packaging quantity (minimum)
Taping 5000pcs

■ Products characteristics table

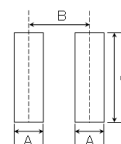
CaseSize (EIA/JIS)	~/4010
Inductance	15 μ H ($\pm 20\%$)
Inductance Measuring Frequency	100kHz
Rated Current -Saturation Current	470mA
Rated Current -Temperature Rise Current	510mA
DC Resistance (max)	0.612 Ω
Avg. of DC Resistance	0.51 Ω
Temperature Range	-25°C to 120°C
Self-resonant Frequency (min)	24MHz
RoHS Compliance	Yes
Halogen Free	Yes
Soldering Method	Reflow

■ External Dimensions

L	4mm ± 0.2
W	4mm ± 0.2
H	1mm max

■ Recommended Land Patterns

【推奨ランドパターン】 実装上の注意 ・実装状態を確認の上ご使用くださいようお願いいたします。 ・本製品のはんだ付けはリフローはんだ工法に限りま。
【Recommended Land Patterns】 Surface Mounting ・Mounting and soldering conditions should be checked beforehand. ・Applicable soldering process to these products is reflow soldering only.



SMD Power Inductors (NR series/NR series H type/S type/V type)			
Type	A	B	C
NR 4010, NRS4010,			
NR 4012, NRS4012,	1.2	2.8	3.7
NR 4018, NRS4018			

unit:mm