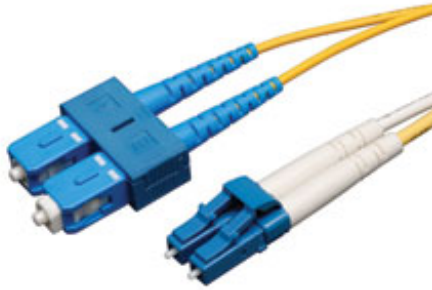




Tripp Lite
1111 West 35th Street
Chicago, IL 60609 USA
Telephone: +(773) 869 1234
E-mail: saleshelp@tripplite.com

Model #: N366-10M

10M (33-ft.) Duplex SMF 8.3/125 Patch Cable (LC/SC)



Highlights

- Premium PVC 8.3/125 micron singlemode patch cables
- Attenuation loss meets or exceeds the latest industry standards
- Twice the bandwidth throughput of multimode cable

Description

Tripp Lite's 10-meter singlemode duplex fiber optic LC/SC patch cable is manufactured from 8.3/125 zipcord fiber. The cable has SC connectors on one end, LC connectors on the other, a PVC jacket, and is FDDI and OFNR rated. Duplex singlemode fiber is most commonly used in LAN applications.

Applications

- Networking equipment that requires singlemode fiber optic patch cabling

System Requirements

- Any fiber optic hardware or NIC card requiring singlemode duplex cable with LC/SC connectors

Package Includes



- 10-meter Duplex Singlemode Fiber Patch Cable, LC/SC

Features

- Manufactured from 8.3/125 duplex (zipcord) fiber
- PVC jacket
- Length: 10 meters. Connectors: 2 x SC; 2 x LC
- Insertion loss testing performed on every connector (0.2db typical) and provided with cable
- Beveled edge on ends of glass makes insertion of plug a breeze
- Fiber made from glass (not a polymer)
- Color-coded shrouds identify transmit and receive
- Fiber optic distributed data interface (FDDI) rated
- OFNR (riser rated)

Specifications

OVERVIEW	
Clad Diameter	125 micron

Core Diameter	8.3 micron
Number of Fibers	2
Intended Application	Computer Networking (Fiber)
Cable Type	SINGLEMODE 8.3/125 FIBER OPTIC
INPUT	
Cable Length (m)	10
UPC ASSIGNMENT	
Unit Carton UPC#	037332122858
PHYSICAL	
Color	Yellow
Style	Fiber Optic
CONNECTIONS	
Connector A	 LC
Connector B	 SC
Number of Connectors	4
WARRANTY	
Product Warranty Period (Worldwide)	Lifetime limited warranty

Related Items

Optional Products

Related Model	Description	Qty.
N352-02M	2M (6-ft.) Duplex SMF 8.3/125 Patch Cable (ST/ST)	1
N354-05M	5M (16-ft.) Duplex SMF 8.3/125 Patch Cable (SC/ST)	1
N356-02M	2M (6-ft.) Duplex SMF 8.3/125 Patch Cable (SC/SC)	1
N356-03M	3M (10-ft.) Duplex SMF 8.3/125 Patch Cable (SC/SC)	1
N366-01M	1M (3-ft.) Duplex SMF 8.3/125 Patch Cable (LC/SC)	1
N366-02M	2M (6-ft.) Duplex SMF 8.3/125 Patch Cable (LC/SC)	1
N370-02M	2M (6-ft.) Duplex SMF 8.3/125 Patch Cable (LC/LC)	1
N370-05M	5M (16-ft.) Duplex SMF 8.3/125 Patch Cable (LC/LC)	1

More information, including related products, owner's manuals, and additional technical specifications, can be found online at www.tripplite.com/en/products/model.cfm?txtModelID=3261.

Copyright © 2013 Tripp Lite. All rights reserved. All trademarks are the sole property of their respective owners. Tripp Lite has a policy of continuous improvement. Specifications are subject to change without notice. Photos may differ slightly from final products.