

1.  $\text{C}$  REPRESENTS A CRITICAL DIMENSION.
2. MINIMUM PUSH OUT FORCE: 1N [.25 LB]
3. MAXIMUM HEIGHT VARIATION BETWEEN ANY TWO POSTS: 0.13[.005].
4. MAXIMUM ALLOWABLE BOW: 0.05[.002] MM/MM AFTER ASSEMBLY.
5. NOTE DELETED.
6. OR-104-01 TO BE COMPRESSED 20-40% TO MEET CEI/IEC 60529 CODE IP67.
7. FOR QUANTITIES UP TO 49 PIECES, NO LEADER, TRAILER, OR REEL WILL BE SUPPLIED.  
FOR QUANTITIES 50-124, NO LEADER OR TRAILER WILL BE SUPPLIED.
8. EPOXY-01 MUST BE FLUSH OR BELOW FORMED BY THIS SURFACE.

DO NOT  
SCALE FROM  
THIS PRINT

DESIGNED & DIMENSIONED  
IN MILLIMETERS[INCHES]

MUSBS-05-S-B-TH-XX-TR

No OF POSITIONS  
-05

PACKAGING  
-TR: TAPE & REEL

OPTION

\*-PF: PANEL FLANGE (LEAVE  
BLANK FOR NO MOUNTING  
HARDWARE)

TERMINATION  
-TH: THROUGH HOLE

PLATING SPECIFICATION

-S: SELECTIVE, .000030 GOLD  
ON POST, TIN ON TAIL, WITH  
.000050 MIN NICKEL  
UNDERPLATING OVERALL.

TYPE  
-B

\* NOT TOOLED

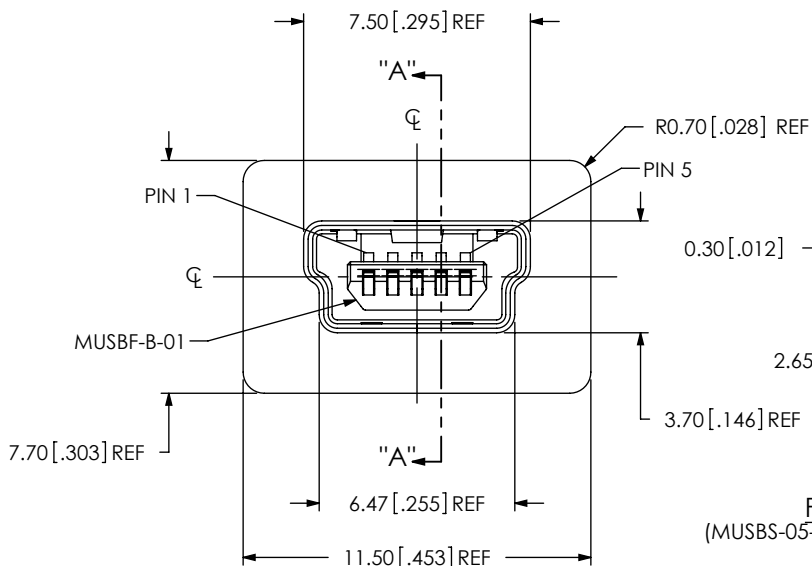
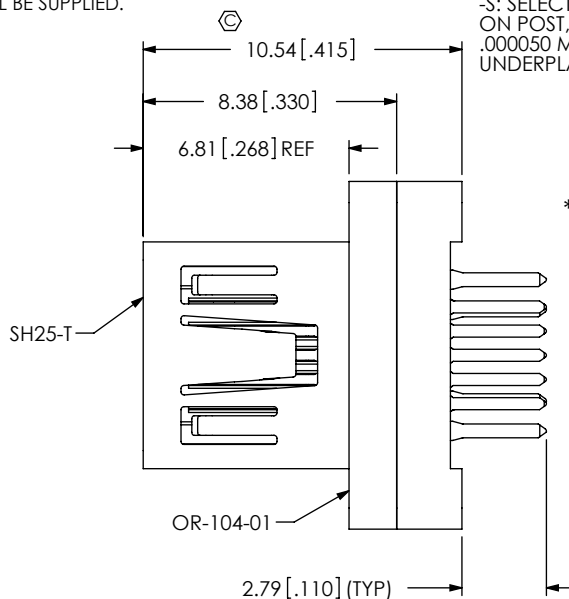
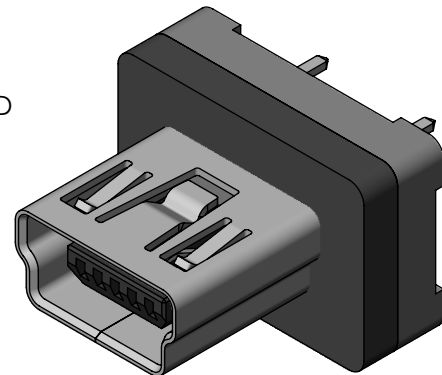
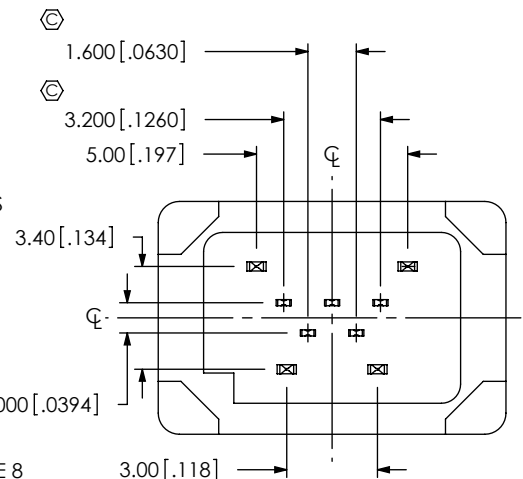
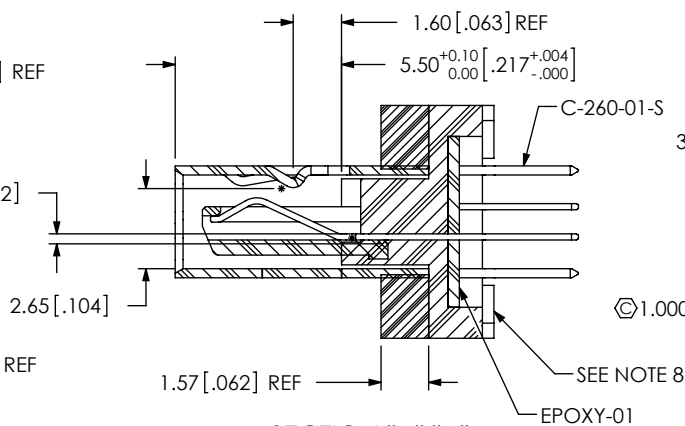


FIG 1  
(MUSBS-05-S-B-TH SHOWN)



UNLESS OTHERWISE SPECIFIED,  
DIMENSIONS ARE IN MILLIMETERS.  
TOLERANCES ARE:

DECIMALS ANGLES  
X.X:  $\pm 0.3$  [.01] 2°  
X.XX:  $\pm 0.13$  [.005]  
X.XXX:  $\pm 0.051$  [.0020]

PROPRIETARY NOTE

THIS DOCUMENT CONTAINS INFORMATION  
CONFIDENTIAL AND PROPRIETARY TO  
SAMTEC, INC. AND SHALL NOT BE REPRODUCED  
OR TRANSFERRED TO OTHER DOCUMENTS OR  
DISCLOSED TO OTHERS OR USED FOR ANY  
PURPOSE OTHER THAN THAT WHICH IT WAS  
OBTAINED WITHOUT THE EXPRESSED WRITTEN  
CONSENT OF SAMTEC, INC.

MATERIAL: DO NOT SCALE DRAWING  
INSULATOR: LCP UL 94V-0 COLOR: BLACK  
CONTACT: PHOS BRONZE  
OVERMOLD: E130I, COLOR: BLACK  
MAX REGROUND: 50%  
EPOXY-01 VOLUME: 0.02mL [.00 000 528 gal]  
MUSBS OVERMOLD SHOT WEIGHT: 4.90g [0.0108 lb]  
F:\DWG\MISC\MKTG\MUSBS-05-S-B-TH-XX-TR-MKT.SLDDRW

SHEET SCALE: 4:1

DESCRIPTION:

MUSB TYPE B, VERTICAL SEALED

DWG. NO.

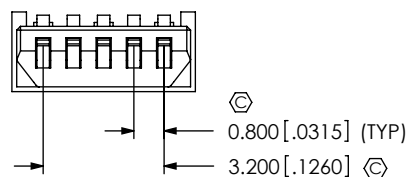
MUSBS-05-S-B-TH-XX-TR

BY: T NEWTON 11/19/2008

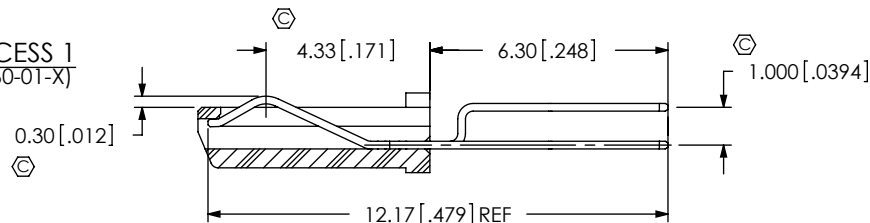
SHEET 1 OF 4

**samtec**

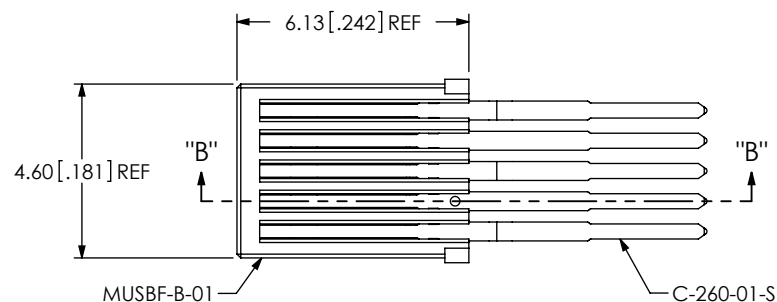
520 PARK EAST BLVD, NEW ALBANY, IN 47150  
PHONE: 812-944-6733 FAX: 812-948-5047  
e-Mail info@SAMTEC.com code 53322



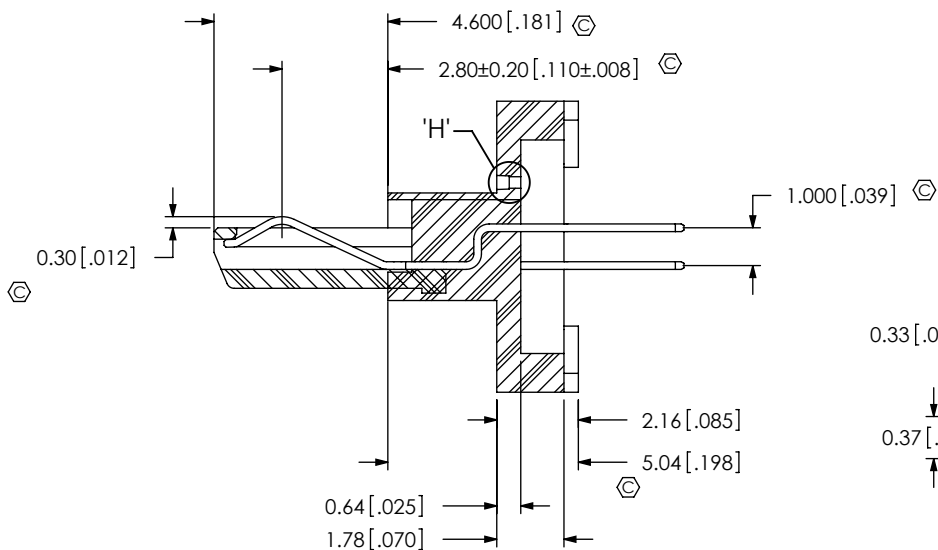
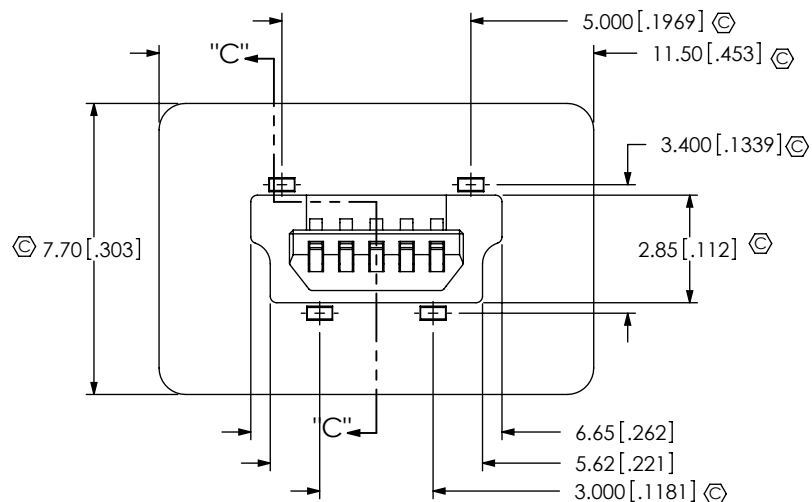
IN-PROCESS 1  
(FILL C-260-01-X)



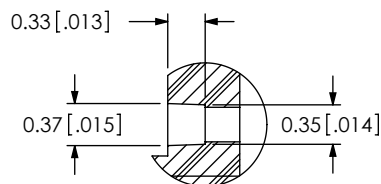
SECTION "B"-"B"



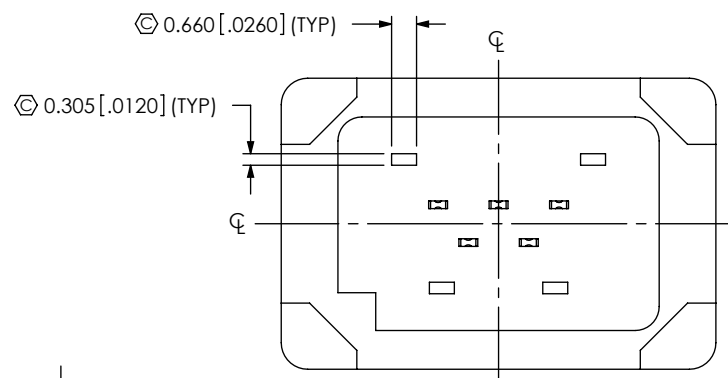
IN-PROCESS 2  
(ADD OVERMOLD)



SECTION "C"-"C"



DETAIL "H"  
SCALE 15:1



PROPRIETARY NOTE

THIS DOCUMENT CONTAINS INFORMATION  
CONFIDENTIAL AND PROPRIETARY TO  
SAMTEC, INC. AND SHALL NOT BE REPRODUCED  
OR TRANSFERRED TO OTHER DOCUMENTS OR  
DISCLOSED TO OTHERS OR USED FOR ANY  
PURPOSE OTHER THAN THAT WHICH IT WAS  
OBTAINED WITHOUT THE EXPRESSED WRITTEN  
CONSENT OF SAMTEC, INC.

DO NOT SCALE DRAWING

SHEET SCALE: 5:1

**samtec**

520 PARK EAST BLVD., NEW ALBANY, IN 47150  
PHONE: 812-944-6733 FAX: 812-948-5047  
e-Mail info@SAMTEC.com code 55322

DESCRIPTION:

MUSB TYPE B, VERTICAL SEALED

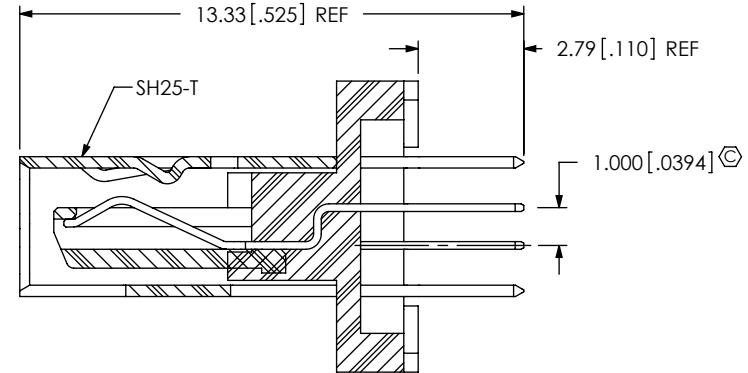
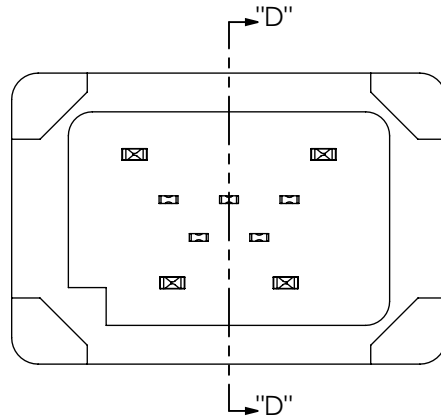
DWG. NO.

MUSBS-05-S-B-TH-XX-TR

BY: T NEWTON 11/19/2008

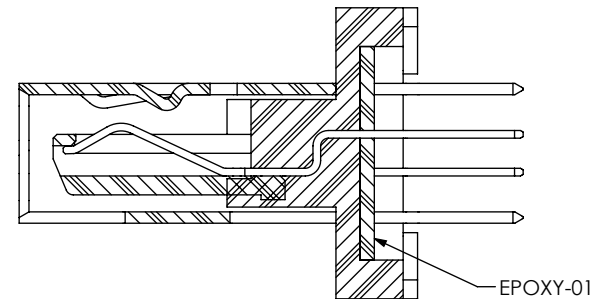
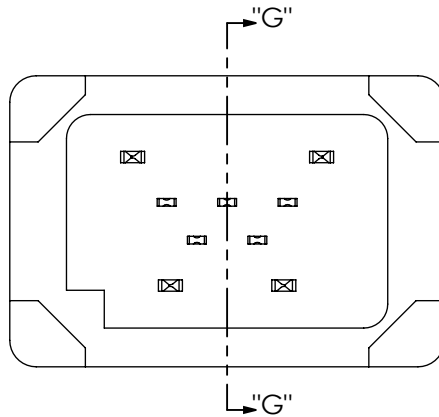
SHEET 2 OF 4

IN-PROCESS 3  
(ADD SH25-T)



SECTION "D"-"D"

IN-PROCESS 4  
(ADD EPOXY-01)



SECTION "G"-"G"

PROPRIETARY NOTE

THIS DOCUMENT CONTAINS INFORMATION  
CONFIDENTIAL AND PROPRIETARY TO  
SAMTEC, INC. AND SHALL NOT BE REPRODUCED  
OR TRANSFERRED TO OTHER DOCUMENTS OR  
DISCLOSED TO OTHERS OR USED FOR ANY  
PURPOSE OTHER THAN THAT WHICH IT WAS  
OBTAINED WITHOUT THE EXPRESSED WRITTEN  
CONSENT OF SAMTEC, INC.

DO NOT SCALE DRAWING

SHEET SCALE: 5:1

**samtec**

520 PARK EAST BLVD, NEW ALBANY, IN 47150  
PHONE: 812-944-6733 FAX: 812-948-5047  
e-Mail: info@SAMTEC.com code 55322

DESCRIPTION:

MUSB TYPE B, VERTICAL SEALED

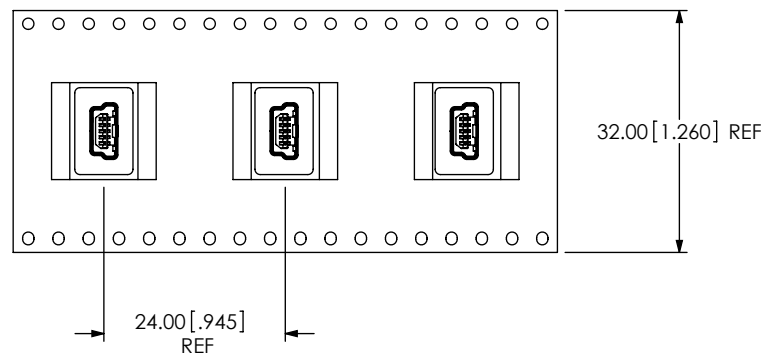
DWG. NO.

MUSBS-05-S-B-TH-XX-TR

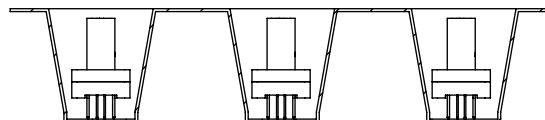
BY: T NEWTON 11/19/2008

SHEET 3 OF 4

PACKAGING VIEW



USER DIRECTION OF UN-REELING  
POCKET NOT DETAILED →



PROPRIETARY NOTE

THIS DOCUMENT CONTAINS INFORMATION  
CONFIDENTIAL AND PROPRIETARY TO  
SAMTEC, INC. AND SHALL NOT BE REPRODUCED  
OR TRANSFERRED TO OTHER DOCUMENTS OR  
DISCLOSED TO OTHERS OR USED FOR ANY  
PURPOSE OTHER THAN THAT WHICH IT WAS  
OBTAINED WITHOUT THE EXPRESSED WRITTEN  
CONSENT OF SAMTEC, INC.

DO NOT SCALE DRAWING

SHEET SCALE: 1:1

**samtec**

520 PARK EAST BLVD, NEW ALBANY, IN 47150  
PHONE: 812-944-6733 FAX: 812-948-5047  
e-Mail info@SAMTEC.com code 55322

DESCRIPTION:  
MUSB TYPE B, VERTICAL SEALED

DWG. NO.  
**MUSBS-05-S-B-TH-XX-TR**

BY: T NEWTON 11/19/2008 SHEET 4 OF 4