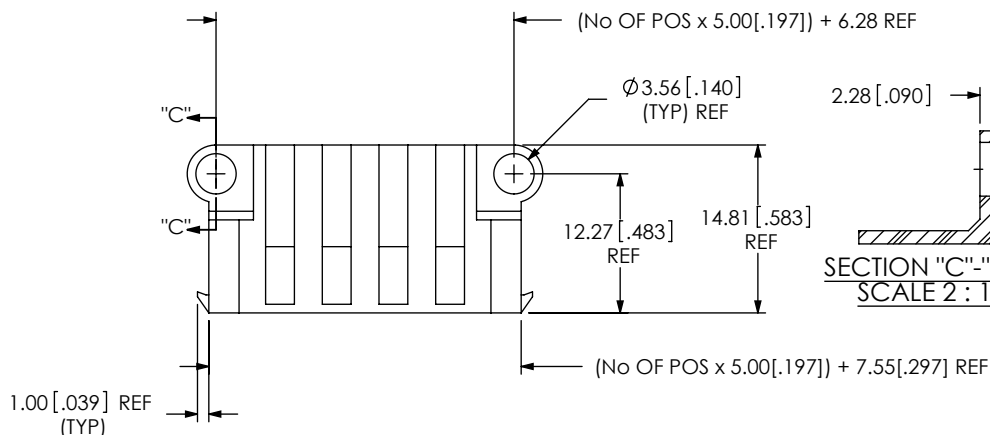


DO NOT  
SCALE FROM  
THIS PRINT



SECTION "C"-"C"  
SCALE 2 : 1

No OF POSITIONS  
-02, -03, -04, -06, -08

LEAD STYLE  
-01

TAIL LENGTH  
-01: FOR 1.57[.062]  
THICK PCB  
(USE SUB-T-1M40-01-X)  
\*-02: FOR 3.18[.125]  
THICK PCB  
(USE SUB-T-1M40-02-X)  
-03: FOR 2.36[.093]  
THICK PCB  
(USE SUB-T-1M40-03-X)

\*\*OPTION **K**  
-SD: SCREW DOWN  
(SEE FIG 1, SHT 1)  
-LC: LOCKING CLIP  
(USE LC-07-TM)  
(SEE FIG 2, SHT 2)  
(-SD OR -LC MUST BE SELECTED)

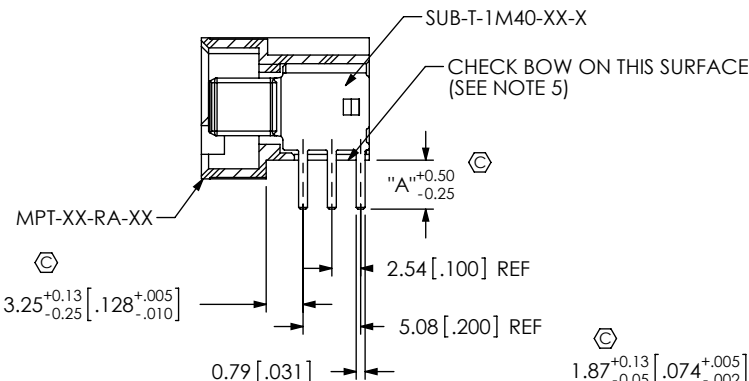
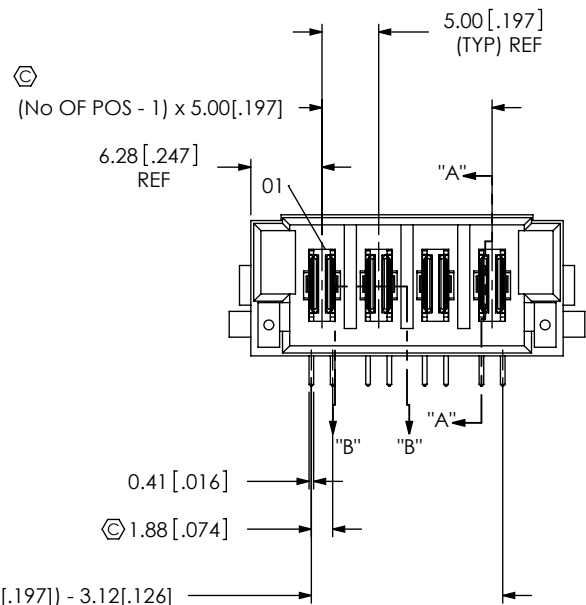
RIGHT ANGLE

PLATING SPECIFICATION  
-L: 10μ" GOLD IN CONTACT AREA,  
MATTE TIN ON TAIL  
-T: MATTE TIN CONTACT AND TAIL

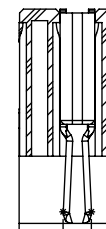
TABLE 1		
STYLE	"A"	SUB-T-1M40-XX-X
-01	2.72[.107]	SUB-T-1M40-01-X
*-02	4.32[.170]	SUB-T-1M40-02-X
-03	3.51[.138]	SUB-T-1M40-03-X

\* NOT TOOLED

\*\* AS OF REV K SAMTEC WILL ONLY SUPPORT EXISTING  
**K** BUSINESS WITHOUT -SD OR -LC OPTION SELECTED



SECTION "A"-"A"

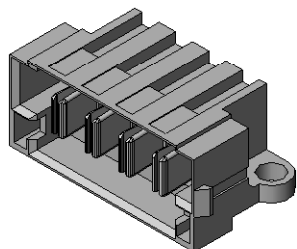


SECTION "B"-"B"  
SCALE 2 : 1

FIG 1  
MPT-04-01-X-RA-SD SHOWN

NOTES:

1.  $\varnothing$  REPRESENTS A CRITICAL DIMENSION.
2. BURR ALLOWANCE: 0.038[.0015] MAX.
3. MINIMUM PUSHOUT FORCE: 4.45N[1 LB].
4. PARTS TO BE PACKAGED IN TRAYS.
5. BOW ALLOWED AT 0.002 MM/MM [.002 IN/IN]
6. MINIMUM -LC PULLOUT FORCE: 2.23N [0.5LB]



UNLESS OTHERWISE SPECIFIED,  
DIMENSIONS ARE IN MILLIMETERS.

TOLERANCES ARE:

DECIMALS ANGLES  
.X:  $\pm 0.3[.01]$  2°  
.XX:  $\pm 0.13[.005]$   
.XXX:  $\pm 0.051[.0020]$

PROPRIETARY NOTE

THIS DOCUMENT CONTAINS INFORMATION  
CONFIDENTIAL AND PROPRIETARY TO  
SAMTEC, INC. AND SHALL NOT BE REPRODUCED  
OR TRANSFERRED TO OTHER DOCUMENTS OR  
DISCLOSED TO OTHERS OR USED FOR ANY  
PURPOSE OTHER THAN THAT WHICH IT WAS  
OBTAINED WITHOUT THE EXPRESSED WRITTEN  
CONSENT OF SAMTEC, INC.

MATERIAL: DO NOT SCALE DRAWING  
INSULATOR: LCP, COLOR: BLACK  
CONTACT: COPPER ALLOY

SHEET SCALE: 1:0.666667

**samtec**

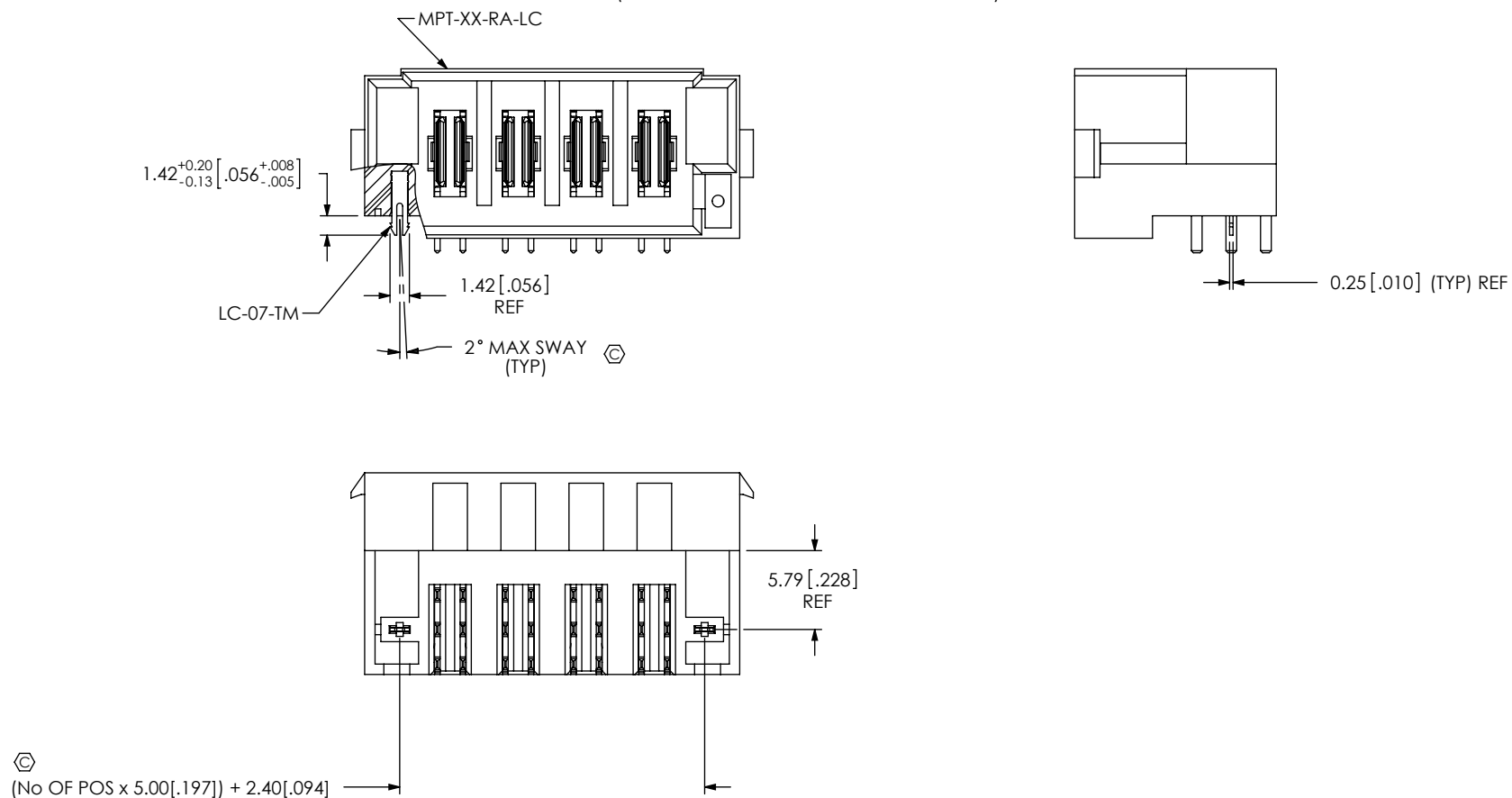
520 PARK EAST BLVD, NEW ALBANY, IN 47150  
PHONE: 812-944-6733 FAX: 812-948-5047  
e-Mail: info@SAMTEC.com code: 55322

DESCRIPTION:  
RIGHT ANGLE POWER TERMINAL

DWG. NO.  
MPT-XX-01-XX-X-RA-XX

BY: CLAY W 1/31/2007 SHEET 1 OF 2

FIG 2  
MPT-04-02-X-RA-LC SHOWN  
(SAME AS FIG 1, UNLESS OTHERWISE STATED)



# PROPRIETARY NOTE

THIS DOCUMENT CONTAINS INFORMATION  
CONFIDENTIAL AND PROPRIETARY TO  
SAMTEC, INC. AND SHALL NOT BE REPRODUCED  
OR TRANSFERRED TO OTHER DOCUMENTS OR  
DISCLOSED TO OTHERS OR USED FOR ANY  
PURPOSE OTHER THAN THAT WHICH IT WAS  
OBTAINED WITHOUT THE EXPRESSED WRITTEN  
CONSENT OF SAMTEC, INC.

DO NOT SCALE DRAWING

SHEET SCALE: 2:1

**samtec**

520 PARK EAST BLVD, NEW ALBANY, IN 47150  
PHONE: 812-944-6733 FAX: 812-948-5047  
e-Mail: info@SAMTEC.com code: 55322

DESCRIPTION:

RIGHT ANGLE POWER TERMINAL

DWG. NO.

MPT-XX-01-XX-X-RA-XX

BY: CLAY W

1/31/2007

SHEET 2 OF 2