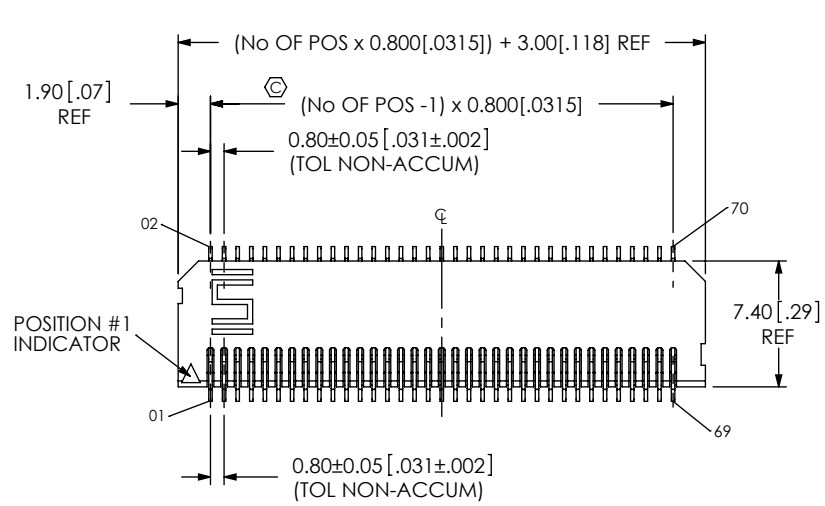


DO NOT SCALE FROM THIS PRINT



MEC8-1XX-XX-XX-D-RXX-XX

No OF POSITIONS (PER ROW)
 -10, -20, -30, -35 (SEE FIG 1)
 -40 & -50 (SEE FIG 2, SHEET 2)
 -13, -25, -37, -49 (-02 CARD THICKNESS ONLY, SEE FIG 2)

CARD THICKNESS
 -01: 1mm [.039] THICK CARD (USE MEC8-XX-01-D-RAX)
 ** -02: 1.57mm [.062] THICK CARD (USE MEC8-XX-02-D-RAX)

PLATING
 -L: 10μ" SELECTIVE GOLD IN CONTACT AREA, MATTE TIN ON TAIL
 -S: 30μ" SELECTIVE GOLD IN CONTACT AREA, MATTE TIN ON TAIL
 -LM: 10μ" SELECTIVE GOLD IN CONTACT AREA, MATTE TIN ON TAIL
 -SM: 30μ" SELECTIVE GOLD IN CONTACT AREA, MATTE TIN ON TAIL

OPTION
 -TR: TAPE & REEL (SEE FIG 5, SHT 3)

TAIL OPTION
 -RA1: STANDARD (SEE FIG 1) (USE MEC8-XX-XX-D-RA1, C-173-01-X & C-174-XX-X)
 *-RA2: ELEVATED (SEE FIG 3, SHT 3) (USE MEC8-XX-XX-D-RA2, C-173-02-X & C-174-02-X)
 -RL1: LATCHING (SEE FIG 4, SHT 4) (USE MEC8-XX-XX-D-RL1, C-173-01-X, C-174-03-X & WT-25-03-T, AVAILABLE IN POS -13, -25, -37 & -49)

ROW SPECIFICATION
 -D: DOUBLE (USE MEC8-XX-XX-D-RXX)

*** = NOT TOOLED**
**** = SEE NOTE 4**

FIG 1 FOR POSITIONS -10, -20, -30 & -35 (SHOWN: MEC8-135-01-XX-D-RA1)

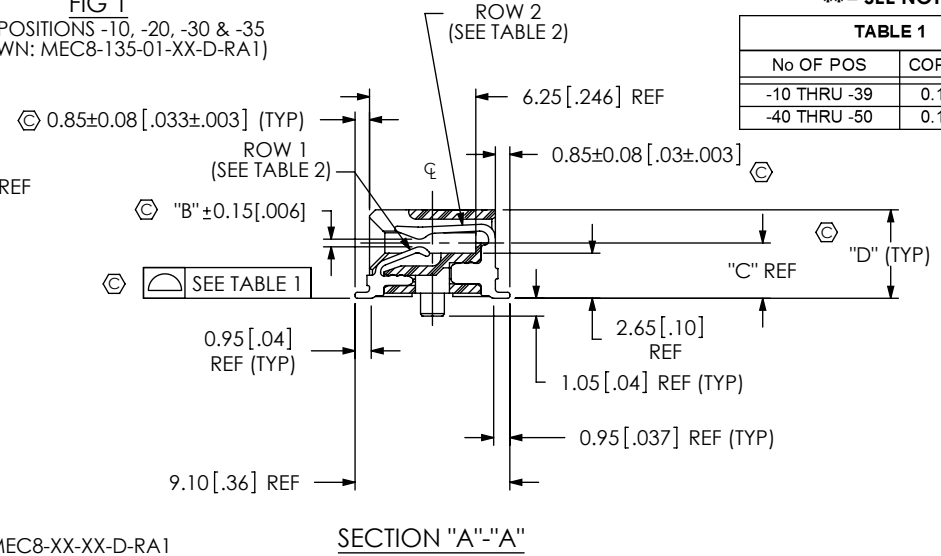
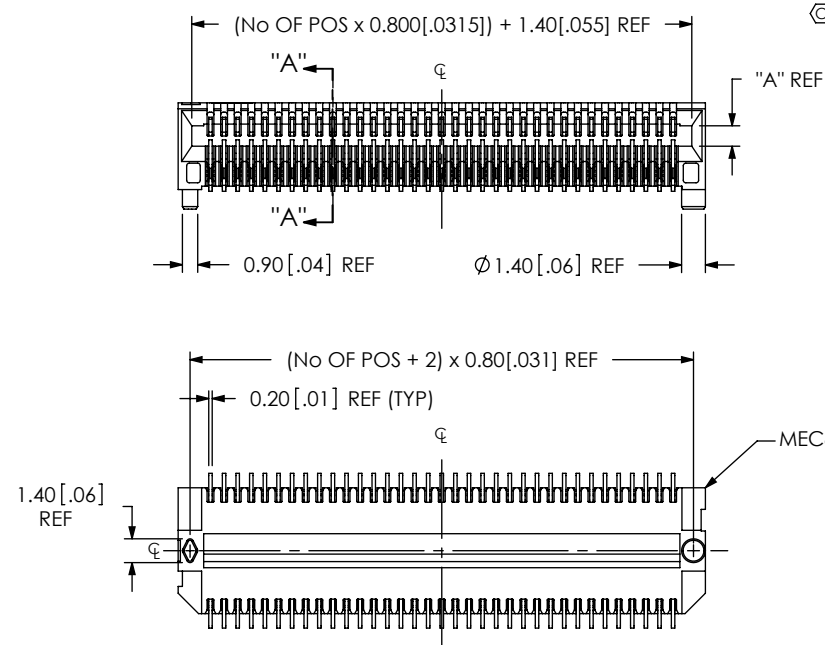


TABLE 1

No OF POS	COPLANARITY
-10 THRU -39	0.102 [.0040]
-40 THRU -50	0.152 [.0060]

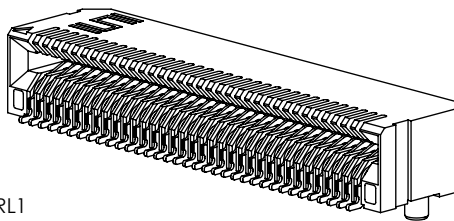
TABLE 2

TAIL OPTION	CARD THICKNESS	ROW 1 CONTACT	ROW 2 CONTACT	"A"	"B"	"C"	"D"
-RA1	-01	C-173-01-XX	C-174-01-XX	1.20 [.047]	0.45 [.018]	3.25 [.128]	5.20 [.205]
	-02	C-173-01-XX	C-174-03-XX	1.80 [.071]	0.95 [.037]	3.54 [.139]	5.78 [.227]
*-RA2	-01	C-173-02-XX	C-174-02-XX	1.20 [.047]	0.45 [.018]	5.25 [.207]	7.20 [.283]
-RL1	-02	C-173-01-XX	C-174-03-XX	1.80 [.071]	0.95 [.037]	3.54 [.139]	5.78 [.227]

DESIGNED & DIMENSIONED IN MILLIMETERS (INCHES FOR REFERENCE ONLY)

NOTES:

- ⊕ REPRESENTS A CRITICAL DIMENSION.
- BURR ALLOWANCE: 0.038 [.0015] MAX.
- MINIMUM PUSHOUT FORCE: .5 LB.
- 02 CARD THICKNESS ONLY AVAILABLE ON -RA1 & -RL1 TAIL OPTION.
- PARTS TO BE PACKAGED IN TRAYS UNLESS OTHERWISE SPECIFIED.



UNLESS OTHERWISE SPECIFIED, DIMENSIONS ARE IN MILLIMETERS. TOLERANCES ARE:
 DECIMALS ANGLES
 .X: ±.3 [.01] 2°
 .XX: ±.13 [.005]
 .XXX: ±.051 [.0020]

PROPRIETARY NOTE
 THIS DOCUMENT CONTAINS INFORMATION CONFIDENTIAL AND PROPRIETARY TO SAMTEC, INC. AND SHALL NOT BE REPRODUCED OR TRANSFERRED TO OTHER DOCUMENTS OR DISCLOSED TO OTHERS OR USED FOR ANY PURPOSE OTHER THAN THAT WHICH IT WAS OBTAINED WITHOUT THE EXPRESSED WRITTEN CONSENT OF SAMTEC, INC.



520 PARK EAST BLVD, NEW ALBANY, IN 47150
 PHONE: 812-944-6733 FAX: 812-948-5047
 e-Mail: info@SAMTEC.com code 55322

MATERIAL: DO NOT SCALE DRAWING SHEET SCALE: 2.25:1
FLAMMABILITY RATING: UL 94V-0
INSULATOR: LCP
 -01: COLOR: NATURAL
 -02: COLOR: BLACK
CONTACT: PHOS BRONZE
WELB TABS: PHOS BRONZE

DESCRIPTION:
 0.8mm [.031"] RIGHT ANGLE EDGE CARD ASSEMBLY
DWG. NO.
MEC8-1XX-XX-XX-D-RXX-XX
BY: KEVIN B 10/18/01 SHEET 1 OF 4

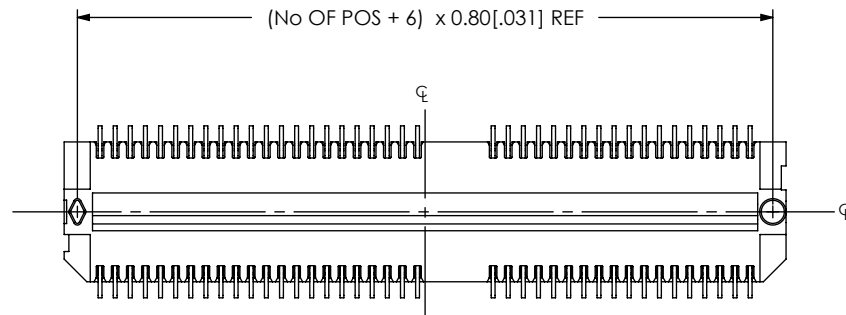
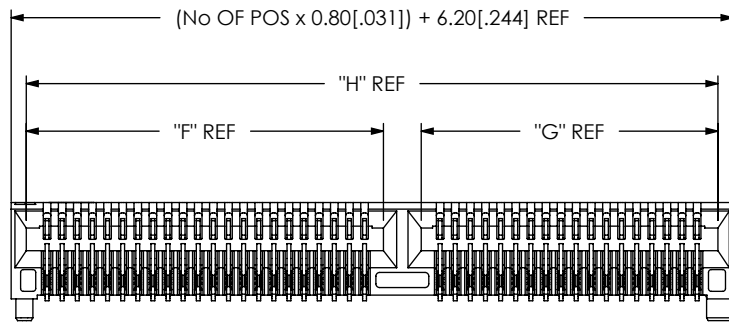
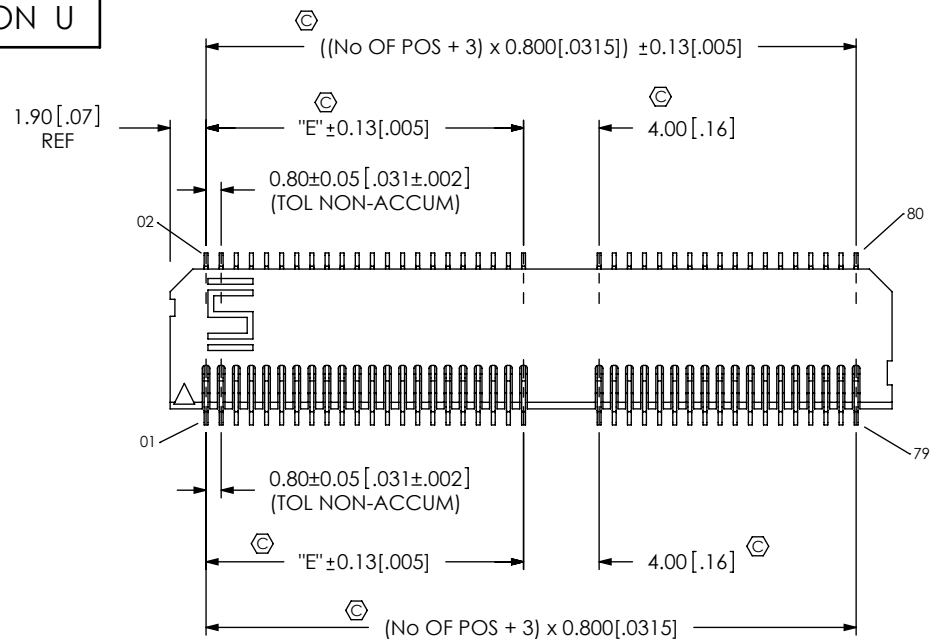
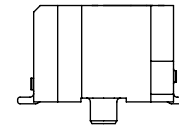


FIG 2
 FOR POSITIONS -13, -25, -37, -40, -49 & -50
 (FOR -13, -25, -37 & -49: .02 CARD THICKNESS ONLY)
 (SAME AS FIG 1, UNLESS OTHERWISE STATED)
 (SHOWN: MEC8-140-01-XX-D-RA1)

No OF POSITIONS	"E"	"F" REF	"G" REF	"H" REF
-13	4.000[.1575]	6.10[.240]	6.90[.272]	15.00[.591]
-25	4.000[.1575]	6.10[.240]	16.50[.650]	24.60[.969]
-37	16.000[.6299]	18.10[.713]	14.10[.555]	34.20[1.346]
-40	16.800[.6614]	18.90[.744]	15.70[.618]	36.60[1.441]
-49	20.800[.8189]	22.90[.902]	18.90[.744]	43.80[1.724]
-50	20.800[.8189]	22.90[.902]	19.70[.776]	44.60[1.756]



PROPRIETARY NOTE
 THIS DOCUMENT CONTAINS INFORMATION CONFIDENTIAL AND PROPRIETARY TO SAMTEC, INC. AND SHALL NOT BE REPRODUCED OR TRANSFERRED TO OTHER DOCUMENTS OR DISCLOSED TO OTHERS OR USED FOR ANY PURPOSE OTHER THAN THAT WHICH IT WAS OBTAINED WITHOUT THE EXPRESSED WRITTEN CONSENT OF SAMTEC, INC.

DO NOT SCALE DRAWING

SHEET SCALE: 2.5:1



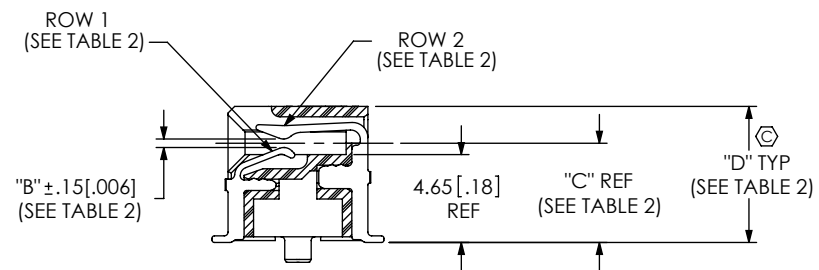
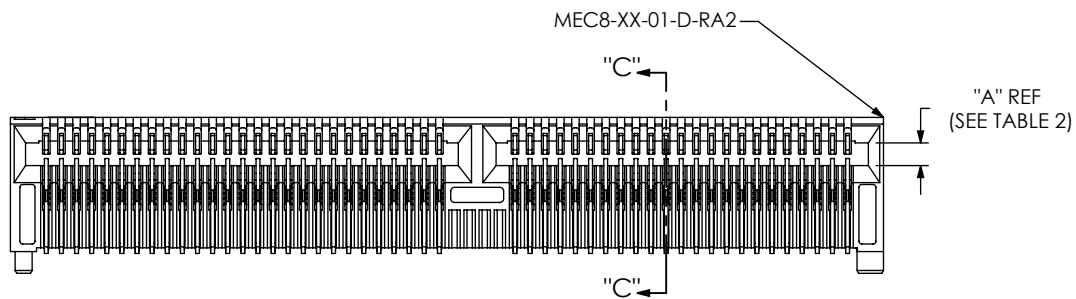
520 PARK EAST BLVD, NEW ALBANY, IN 47150
 PHONE: 812-944-6733 FAX: 812-948-5047
 e-Mail: info@SAMTEC.com code 55322

DESCRIPTION:
 0.8mm [.031"] RIGHT ANGLE EDGE CARD ASSEMBLY

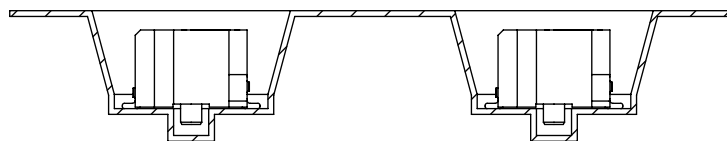
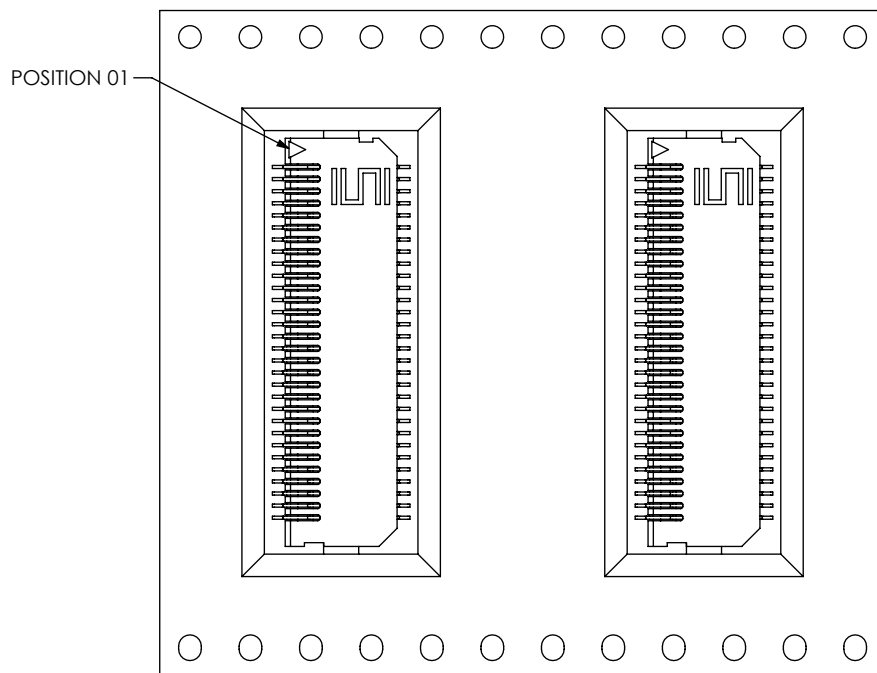
DWG. NO.
MEC8-1XX-XX-XX-D-RXX-XX

BY: KEVIN B 10/18/01 SHEET 2 OF 4

FIG 3
 -RA2: ELEVATED OPTION
 (SAME AS FIG 2, UNLESS OTHERWISE STATED)
 (SHOWN: MEC8-150-01-XX-D-RA2)
 * = NOT TOOLED



SECTION "C"-"C"



USER DIRECTION OF UNREELING →
 POCKET NOT DETAILED

FIG 5
 TAPE & REEL

C:\EnterpriseVault\DWG\MISC\MKTG\MEC8-1XX-XX-XX-D-RXX-XX-MKT.SLDDRW

PROPRIETARY NOTE
 THIS DOCUMENT CONTAINS INFORMATION
 CONFIDENTIAL AND PROPRIETARY TO
 SAMTEC, INC. AND SHALL NOT BE REPRODUCED
 OR TRANSFERRED TO OTHER DOCUMENTS OR
 DISCLOSED TO OTHERS OR USED FOR ANY
 PURPOSE OTHER THAN THAT WHICH IT WAS
 OBTAINED WITHOUT THE EXPRESSED WRITTEN
 CONSENT OF SAMTEC, INC.

DO NOT SCALE DRAWING

SHEET SCALE: 2.5:1

samtec

520 PARK EAST BLVD, NEW ALBANY, IN 47150
 PHONE: 812-944-6733 FAX: 812-948-5047
 e-Mail info@SAMTEC.com code 55322

DESCRIPTION:
 0.8mm [.031"] RIGHT ANGLE EDGE CARD ASSEMBLY

DWG. NO.
MEC8-1XX-XX-XX-D-RXX-XX

BY: KEVIN B 10/18/01 SHEET 3 OF 4

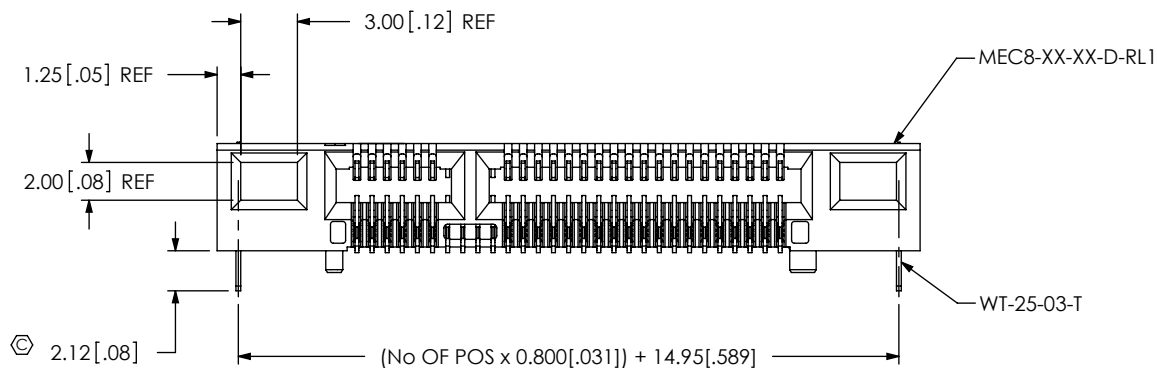
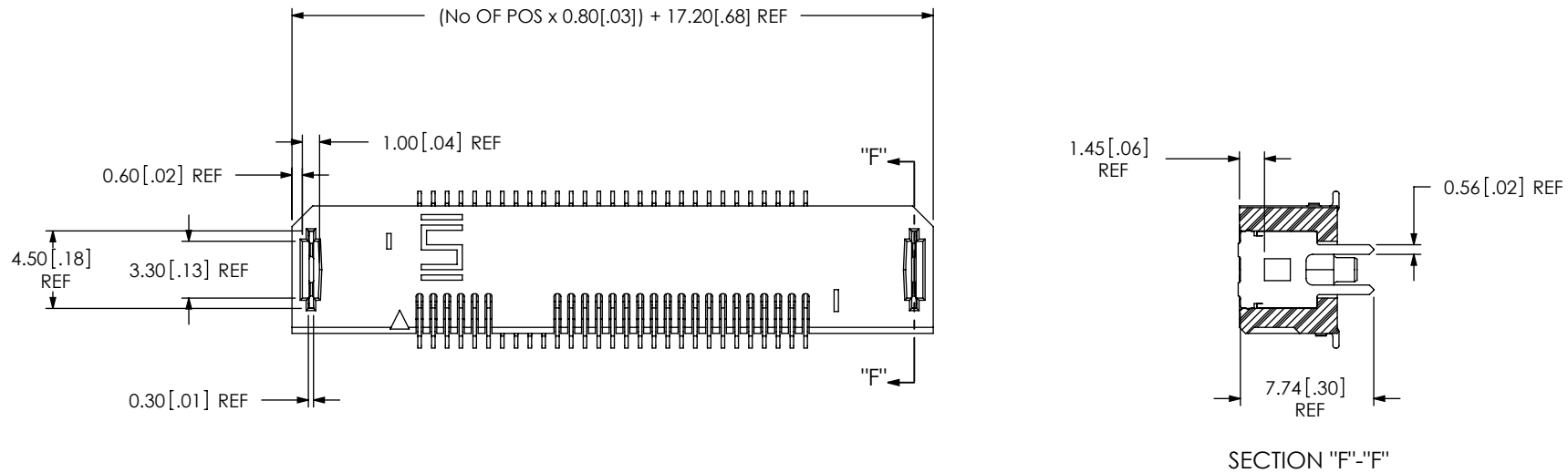


FIG 4
 -RL1: LATCHING OPTION
 (SAME AS FIG 2, UNLESS OTHERWISE STATED)
 (SHOWN: MEC8-125-01-XX-D-RL1
 (AVAILABLE ONLY IN POS
 -13, -25, -37 & -49)

<p>PROPRIETARY NOTE THIS DOCUMENT CONTAINS INFORMATION CONFIDENTIAL AND PROPRIETARY TO SAMTEC, INC. AND SHALL NOT BE REPRODUCED OR TRANSFERRED TO OTHER DOCUMENTS OR DISCLOSED TO OTHERS OR USED FOR ANY PURPOSE OTHER THAN THAT WHICH IT WAS OBTAINED WITHOUT THE EXPRESSED WRITTEN CONSENT OF SAMTEC, INC.</p> <p>DO NOT SCALE DRAWING</p> <p>SHEET SCALE: 2.5:1</p>		
	<p>520 PARK EAST BLVD, NEW ALBANY, IN 47150 PHONE: 812-944-6733 FAX: 812-948-5047 e-Mail info@SAMTEC.com code 55322</p>	
	<p>DESCRIPTION: 0.8mm [.031"] RIGHT ANGLE EDGE CARD ASSEMBLY</p>	
	<p>DWG. NO. MEC8-1XX-XX-XX-D-RXX-XX</p>	
<p>BY: KEVIN B</p>	<p>10/18/01</p>	<p>SHEET 4 OF 4</p>