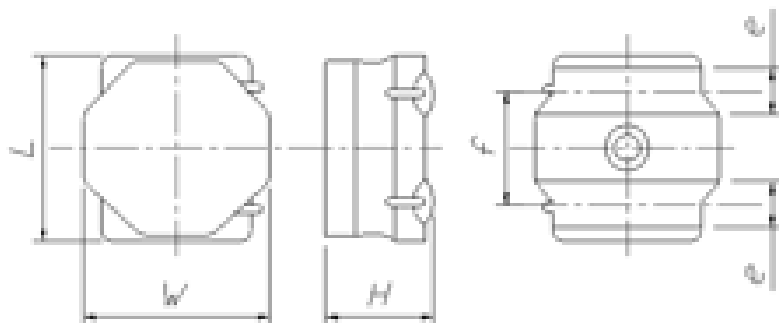


Metal Core SMD Power Inductors (MCOIL(TM) MD series)

MDMK2020T1R5MM



■ Features

- Item Summary
1.5 μ H($\pm 20\%$), 2000mA, 1650mA
- Lifecycle Stage
Mass Production
- Standard packaging quantity (minimum)
Taping 2500pcs

■ Products characteristics table

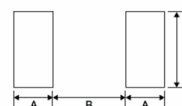
CaseSize (EIA/JIS)	~/2020
Inductance	1.5 μ H($\pm 20\%$)
Inductance Measuring Frequency	1MHz
Rated Current -Saturation Current	2000mA
Rated Current -Temperature Rise Current	1650mA
DC Resistance (max)	0.086 Ω
Temperature Range	-40°C to 125°C
RoHS Compliance	Yes
Halogen Free	Yes
Soldering Method	Reflow

■ External Dimensions

L	2mm ± 0.15
W	2mm ± 0.15
H	1.2mm max

■ Recommended Land Patterns

【推奨ランドパターン】 実装上の注意 ・実装状態を確認の上ご使用ください。また、ご購入の際は、 ・本製品のはんだ付けはリフローはんだ付けに限りします。
【Recommended Land Patterns】 Surface Mounting ・Mounting and soldering conditions should be checked beforehand. ・Applicable soldering process to these products is reflow soldering only.



Metal Core SMD Power Inductors (MCOIL™, MD series)

Type	A	B	C
1616	0.50	0.60	1.65
2020	0.65	0.70	2.00
4040	1.20	1.60	3.70

unit: mm

2013.12.10

The data is reference only. Electrical characteristics vary depending on environment or measurement condition.
 TAIYO YUDEN reserves the right to make change to the Date at any time without notice.
 Before making final selection, please check product specification.