

Standard Rectifier Module

preliminary

$$V_{RRM} = 2 \times 1200 \text{ V}$$

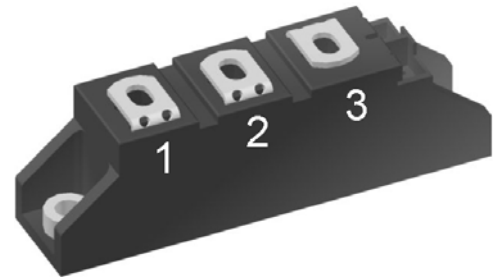
$$I_{FAV} = 140 \text{ A}$$

$$V_F = 1.11 \text{ V}$$

Phase leg

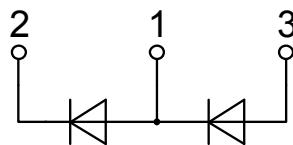
Part number

MDMA140P1200TG



Backside: isolated

 E72873



Features / Advantages:

- Package with DCB ceramic base plate
- Reduced weight
- Improved temperature and power cycling
- Planar passivated chips
- Very low forward voltage drop
- Very low leakage current

Applications:

- Diode for main rectification
- For single and three phase bridge configurations
- Supplies for DC power equipment
- Input rectifiers for PWM inverter
- Battery DC power supplies
- Field supply for DC motors

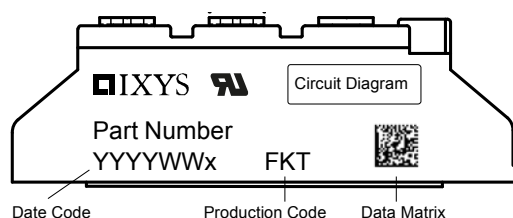
Package: TO-240AA

- Isolation Voltage: 4800V~
- Industry standard outline
- RoHS compliant
- Height: 30 mm
- Base plate: DCB ceramic
- Reduced weight
- Advanced power cycling

Rectifier				Ratings			
Symbol	Definition	Conditions		min.	typ.	max.	Unit
V_{RSM}	max. non-repetitive reverse blocking voltage	$T_{VJ} = 25^{\circ}\text{C}$				1300	V
V_{RRM}	max. repetitive reverse blocking voltage	$T_{VJ} = 25^{\circ}\text{C}$				1200	V
I_R	reverse current, drain current	$V_R = 1200\text{ V}$	$T_{VJ} = 25^{\circ}\text{C}$			200	μA
		$V_R = 1200\text{ V}$	$T_{VJ} = 150^{\circ}\text{C}$			3.5	mA
V_F	forward voltage drop	$I_F = 140\text{ A}$	$T_{VJ} = 25^{\circ}\text{C}$			1.18	V
		$I_F = 280\text{ A}$				1.43	V
		$I_F = 140\text{ A}$	$T_{VJ} = 125^{\circ}\text{C}$			1.11	V
		$I_F = 280\text{ A}$				1.41	V
I_{FAV}	average forward current	$T_C = 100^{\circ}\text{C}$ sine 180°	$T_{VJ} = 150^{\circ}\text{C}$			140	A
V_{FO}	threshold voltage	} for power loss calculation only	$T_{VJ} = 150^{\circ}\text{C}$			0.78	V
r_F	slope resistance					2.2	m Ω
R_{thJC}	thermal resistance junction to case					0.23	K/W
R_{thCH}	thermal resistance case to heatsink				0.20		K/W
P_{tot}	total power dissipation		$T_C = 25^{\circ}\text{C}$			540	W
I_{FSM}	max. forward surge current	$t = 10\text{ ms; (50 Hz), sine}$	$T_{VJ} = 45^{\circ}\text{C}$			2.80	kA
		$t = 8,3\text{ ms; (60 Hz), sine}$	$V_R = 0\text{ V}$			3.03	kA
		$t = 10\text{ ms; (50 Hz), sine}$	$T_{VJ} = 150^{\circ}\text{C}$			2.38	kA
		$t = 8,3\text{ ms; (60 Hz), sine}$	$V_R = 0\text{ V}$			2.57	kA
I^2t	value for fusing	$t = 10\text{ ms; (50 Hz), sine}$	$T_{VJ} = 45^{\circ}\text{C}$			39.2	kA ² s
		$t = 8,3\text{ ms; (60 Hz), sine}$	$V_R = 0\text{ V}$			38.1	kA ² s
		$t = 10\text{ ms; (50 Hz), sine}$	$T_{VJ} = 150^{\circ}\text{C}$			28.3	kA ² s
		$t = 8,3\text{ ms; (60 Hz), sine}$	$V_R = 0\text{ V}$			27.5	kA ² s
C_J	junction capacitance	$V_R = 400\text{ V}$ $f = 1\text{ MHz}$	$T_{VJ} = 25^{\circ}\text{C}$		116		pF

preliminary

Package TO-240AA				Ratings			
Symbol	Definition	Conditions		min.	typ.	max.	Unit
I _{RMS}	RMS current	per terminal				200	A
T _{stg}	storage temperature			-40		125	°C
T _{VJ}	virtual junction temperature			-40		150	°C
Weight					90		g
M _D	mounting torque			2.5		4	Nm
M _T	terminal torque			2.5		4	Nm
d _{Spp/App}	creepage distance on surface striking distance through air	terminal to terminal	13.0	9.7			mm
d _{Spb/Apb}		terminal to backside	16.0	16.0			mm
V _{ISOL}	isolation voltage	t = 1 second	50/60 Hz, RMS; I _{ISOL} ≤ 1 mA	4800			V
		t = 1 minute		4000			V



Part number

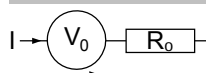
M = Module
 D = Diode
 M = Standard Rectifier
 A = (up to 1800V)
 140 = Current Rating [A]
 P = Phase leg
 1200 = Reverse Voltage [V]
 TG = TO-240AA

Ordering	Part Number	Marking on Product	Delivery Mode	Quantity	Code No.
Standard	MDMA140P1200TG	MDMA140P1200TG	Box	6	512703

Equivalent Circuits for Simulation

* on die level

$T_{VJ} = 150^{\circ}\text{C}$



Rectifier

$V_{0\max}$	threshold voltage	0.78	V
$R_{0\max}$	slope resistance *	1	mΩ

