

| REVISIONS |       |               |          |          |
|-----------|-------|---------------|----------|----------|
| REV.      | EAR   | DESCRIPTION   | DATE     | APPROVED |
| F         | 13741 | NOTE UPDAATES | JUL06/10 | K.L      |
|           |       |               |          |          |

**MDB-E09PA-765 IS SHOWN**

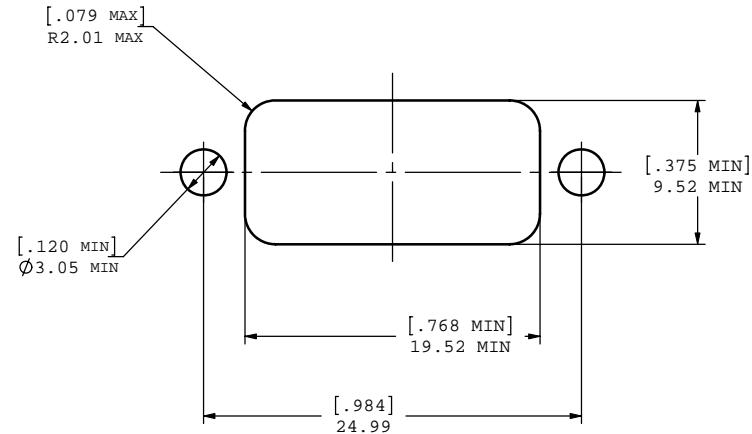
- NOTES:
- MATERIAL:
    - SHELL: ZINC ALLOY WITH 50 MICRO INCH MINIMUM NICKEL PLATING,
    - CONTACTS: COPPER ALLOY 30 MICRO INCH GOLD OVER 50 MICRO INCH NICKEL PLATING,
    - HOUSING: THERMOPLASTIC POLYESTER RESIN,
    - GASKET: SILICONE RUBBER,
    - SCREWS: STAINLESS STEEL,
    - DUST COVER: SILICONE RUBBER.
  - FEATURES: SEALED CONNECTOR IN THE MATED AND UNMATED CONDITIONS.
  - OPERATING TEMPERATURE: -40°C TO +105°C.
  - ENVIRONMENT PERFORMANCE: IP67.
  - CONNECTOR IS ROHS COMPLIANT PER EU DIRECTIVE 2002/95/EC AND AMENDMENTS.
  - PART IS UL94V-0 FLAMMABILITY COMPLIANT.
  - PART NUMBER FOR ORDER:
    - MDB-E09PA-760 - WITH DUST COVER AND SCREWS,
    - MDB-E09PA-765 - NO DUST COVER AND SCREWS.



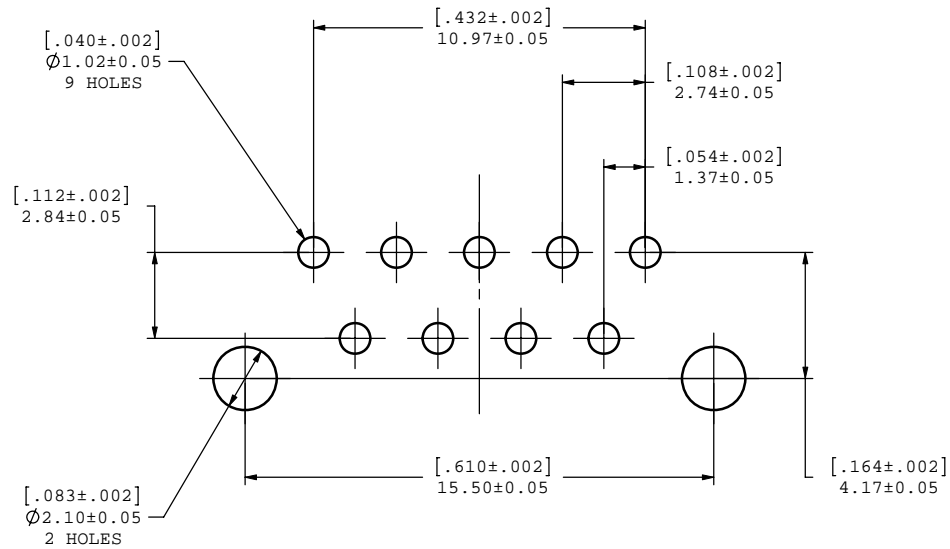
|  |  |                       |          |  |                             |                 |
|--|--|-----------------------|----------|--|-----------------------------|-----------------|
| UNLESS OTHERWISE SPECIFIED DIMENSIONS ARE IN MILLIMETER TOLERANCES ARE:<br><br>DECIMALS                      ANGLES<br>.XX ±.10                      ± 1°<br>.X ±.25 |  | APPROVALS             | DATE     | <b>Amphenol Canada Corp.</b>                                 |                             |                 |
|  |  | DRAWN<br>S.SEMENOV    | OCT06/06 |  |                             |                 |
| MATERIAL AND FINISH  |  | DESIGNED<br>S.SEMENOV | OCT06/06 | TITLE<br>RUGGED 9 PIN,<br>D-SUB CONNECTOR,<br>VERTICAL MOUNT |                             |                 |
|  |  | CHECKED               |          |  |                             |                 |
|  |  | QA APP'D              |          |  |                             |                 |
|  |  | IE APP'D              |          |  |                             |                 |
| REF.   |  | DWG APP'D             |          | SIZE<br>C  | DWG. NO.<br>P-MDB-E09PA-76X | REV.<br>F       |
| CODE IDENT. NO.  |  | A.GREEN               | OCT06/06 | SCALE<br>3:1   | PROJECT<br>MDB              | SHEET<br>1 OF 2 |

DO NOT SCALE DRAWING  
THIS DOCUMENT COTAINS PROPRIETARY INFORMATION AND SUCH INFORMATION MAY NOT BE DISCLOSED TO OTHERS FOR ANY PURPOSE OR USED FOR MANUFACTURING PURPOSES WITHOUT PERMISSION FROM AMPHENOL CANADA CORP.

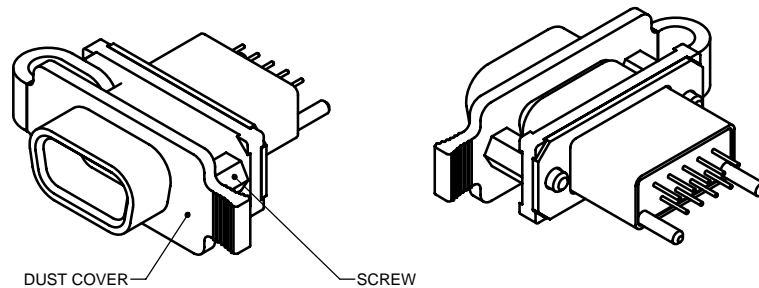
| REVISIONS |       |              |          |          |
|-----------|-------|--------------|----------|----------|
| REV.      | EAR   | DESCRIPTION  | DATE     | APPROVED |
| F         | 13741 | NOTE UPDATES | JUL06/10 | K.L      |
|           |       |              |          |          |



RECOMMENDED PANEL CUTOUT  
DIMENSIONS FOR REFERENCE ONLY



RECOMMENDED P.C.B. LAYOUT



MDB-E09PA-760 IS SHOWN

FOR MORE INFORMATION ABOUT DUST COVER,  
SEE DRAWING P-MDB-227-093-205BP



|   |                |                       |          |  |                             |                 |
|---|----------------|-----------------------|----------|--|-----------------------------|-----------------|
| UNLESS OTHERWISE SPECIFIED<br>DIMENSIONS ARE IN MILLIMETER<br>TOLERANCES ARE: |                | APPROVALS             | DATE     | Amphenol Canada Corp.  |                             |                 |
|   |                | DRAWN<br>S.SEMENOV    | OCT06/06 |  |                             |                 |
| DECIMALS<br>.XX ±.10<br>.X ±.25   | ANGLES<br>± 1° | DESIGNED<br>S.SEMENOV | OCT06/06 | TITLE<br>RUGGED 9 PIN,<br>D-SUB CONNECTOR,<br>VERTICAL MOUNT |                             |                 |
| MATERIAL AND FINISH   |                | CHECKED               |          |  |                             |                 |
|   |                | QA APP'D              |          | SIZE<br>C  | DWG. NO.<br>P-MDB-E09PA-76X | REV.<br>F       |
| REF.  |                | IE APP'D              |          | SCALE<br>3:1   | PROJECT<br>MDB              | SHEET<br>2 OF 2 |
| CODE IDENT. NO.   |                | DWG APP'D<br>A.GREEN  | OCT06/06 |  |                             |                 |