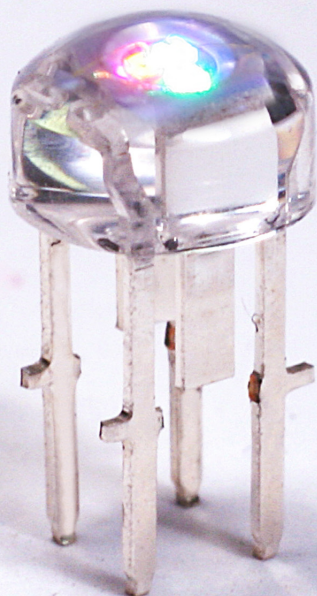


# QuasarBrite™

## 4-Leaded RGB LEDs



### Lumex QuasarBrite™ 4-Leaded RGB LEDs

With a market-leading thermal design, the new QuasarBrite 4-leaded RGB LED combines a compact package size and an innovative lead frame design for outstanding heat dissipation. Additionally, the off-the-board design allows for an increase in convection not seen in most standard products. This product boasts a wide view angle, 120°, not typically seen in through hole products. This set up is ideal for applications that require a matrix of high intensity output with a wide view angle that maximizes pixel pitch in indoor sign applications.

#### Features:

- 120° viewing angle (versus a traditional 30° viewing angle from other through-hole LEDs)
- Superior thermal design leadframe
- Enhanced off-the-board thermal design
- Compact 5mm package size

#### Applications:

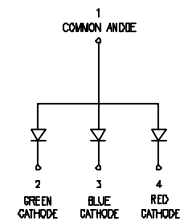
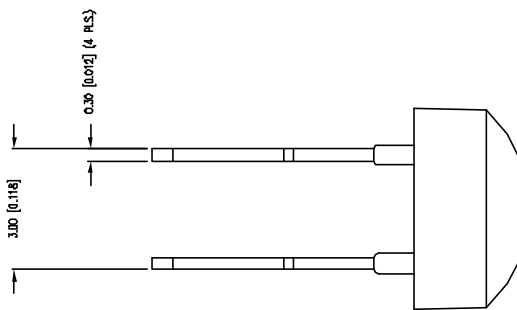
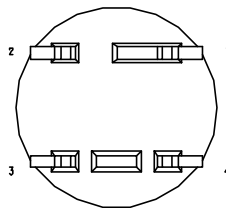
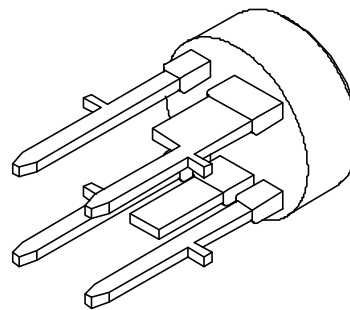
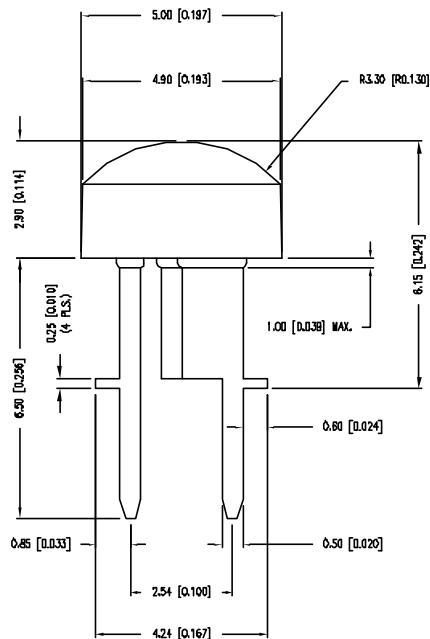
- High output signage (close proximity)
- Decorative lighting
- Indicator lighting
- Portable medical devices
- Multicolor application

#### Markets:

- Electronic Signage
- Automotive
- Industrial controls
- Medical
- Small Space Lighting

**LUMEX®**  
Creating LED and LCD Solutions Together™

# QuasarBrite™ 4-Leaded RGB LEDs



## QuasarBrite™ 4-Leaded RGB LEDs

PN	Emitted Color	Chip Material	Peak Wavelength (nm)	Lens Type	Typ. Vf @ 20mA	Typ mcd @ 20 mA	Viewing Angle
SSL-LX503SIUPGUSBC	Red	AlInGaP	635nm	Water Clear	2.1	350	120
	Green	InGaN	520nm		3.2	750	
	Blue	InGaN	470nm		3.2	280	

