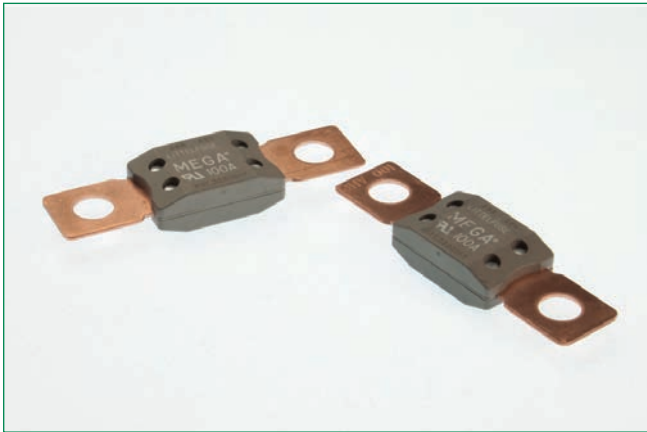


# UL RECOGNIZED MEGA® FUSE RATED 32V



## Description

The MEGA® Fuse is designed for high current circuit protection with "Diffusion Pill Technology." The MEGA® Fuse also provides time delay characteristics. Designed and patented by Littelfuse, the MEGA® Fuse is ideal for battery and alternator protection application and other heavy gauge cables requiring ultra-high current protection.

## Specifications

|                              |                              |
|------------------------------|------------------------------|
| Interrupting Rating:         | 2000A @ 32 VDC               |
| Voltage Rating:              | 32 VDC                       |
| Operating Temperature Range: | -40°C to + 125°C             |
| Housing:                     | PA66                         |
| Terminals:                   | Copper                       |
|                              | M8 bolts holes               |
| Mounting Torque:             | 12-18 Nm M8                  |
| Complies with:               | ISO 8820-5                   |
|                              | UL 248 Special Purpose Fuses |






## Ordering Information

| Part Number     | Package Size |
|-----------------|--------------|
| 0298xxx.ZXEH-UL | 500          |

## Time-Current Characteristics

| % of Rating | Opening Time Min / Max (s) |
|-------------|----------------------------|
|             | 80A-175A                   |
| 75          | - / -                      |
| 100         | 14,400 s / -               |
| 135         | 120 s / 1800 s             |
| 200         | 1 s / 15 s                 |
| 350         | 0.300 s / 5 s              |
| 500         | - / -                      |
| 600         | 0.100 s / 1 s              |

## Ratings

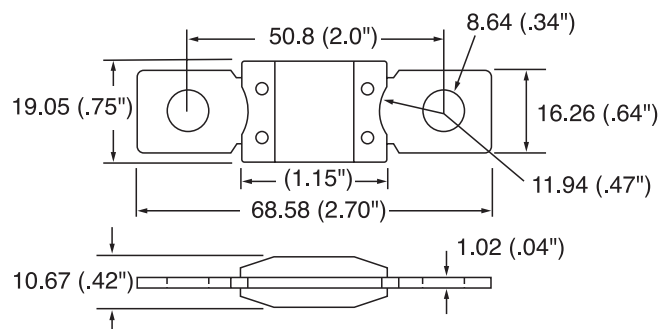
| Part Number     | Current Rating | Font Color  | Typ. Voltage Drop | I <sup>2</sup> t |
|-----------------|----------------|---|-------------------|------------------|
| 0298080.ZXEH-UL | 80 A           |  | 87 mV             | -                |
| 0298100.ZXEH-UL | 100 A          |  | 87 mV             | 31100 A²s        |
| 0298125.ZXEH-UL | 125 A          |  | 80 mV             | 57800 A²s        |
| 0298150.ZXEH-UL | 150 A          |  | 92 mV             | 100000 A²s       |
| 0298175.ZXEH-UL | 175 A          |  | 62 mV             | 168000 A²s       |

# UL RECOGNIZED MEGA® FUSE RATED 32V

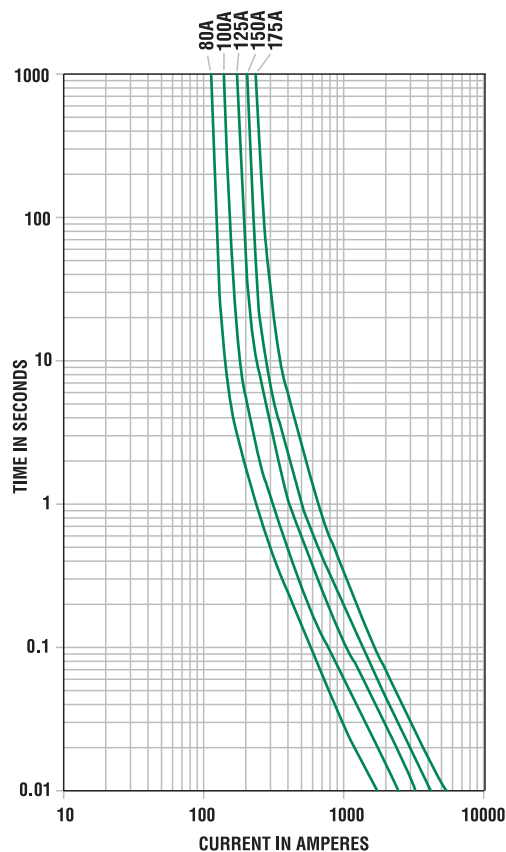


## Dimensions

Dimensions in mm



## Time-Current Characteristic Curves



## Temperature Derating Curve

