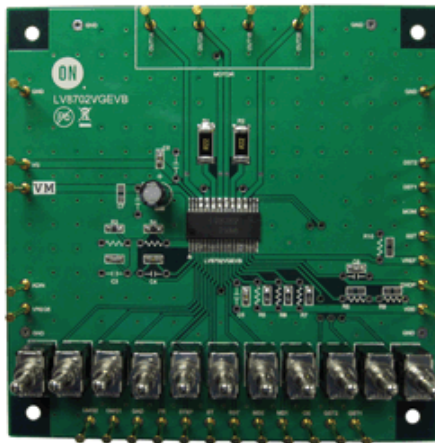




LV8702VGEVB:2-Channel Full Bridge Driver IC Evaluation Board

Evaluation Board Description

The LV8702V is a 2-channel Full-bridge driver IC that can drive a stepper motor driver, which is capable of micro-step drive and supports quarter step. Current is controlled according to motor load and rotational speed at half step, half step full-torque and quarter step excitation, thereby highly efficient drive is realized. Consequently, the reduction of power consumption, heat generation, vibration and noise is achieved.



Design Support

- » [Technical Documentation](#)
- » [Design Resources](#)
- » [Technical Support](#)
- » [Sales Support](#)

Evaluation Board Information

Evaluation Board	Status	Pb-free	Short Description	Parts Used	Action
LV8702VGEVB	Active		2-Channel Full Bridge Driver IC Evaluation Board	LV8702V-MPB-H , LV8702V-TLM-H	

Technical Documents

Type	Document Title	Document ID/Size	Rev
Eval Board: BOM	LV8702VGEVB Bill of Materials ROHS Compliant	LV8702VGEVB_BOM_ROHS.PDF - 55.0 KB	0
Eval Board: Gerber	LV8702VGEVB Gerber Layout Files (Zip Format)	LV8702VGEVB_GERBER.ZIP - 829.0 KB	0
Eval Board: Schematic	LV8702VGEVB Schematic	LV8702VGEVB_SCHEMATIC.PDF - 51.0 KB	0
Eval Board: Test Procedure	LV8702VGEVB Test Procedure	LV8702VGEVB_TEST_PROCEDURE.PDF - 751.0 KB	0