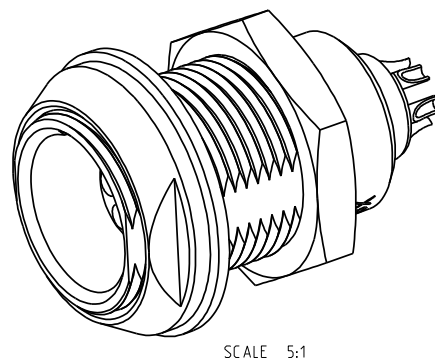
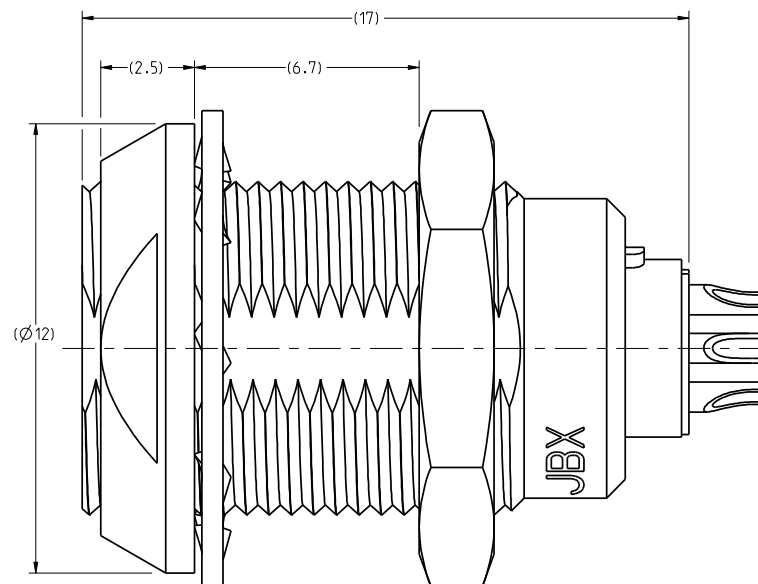


THE INFORMATION CONTAINED IN THIS DRAWING IS CONFIDENTIAL AND MAY NOT BE DISCLOSED WITHOUT WRITTEN CONSENT FROM SOURIAU USA, INC.

8.3<sup>+0.2</sup><sub>0</sub>

Ø9.1<sup>+0.3</sup><sub>-0.1</sub>

RECOMMENDED  
PANEL CUTOUT



NOTES:

MATERIAL:

OUTER SHELL & PANEL NUT : }  
SHIELDING RING : } BRASS CuZn40Pb3 (C38500/C36000)  
NUT : }

SOCKET CONTACT (SOLDER) : CUPRO-NICKEL CuNi1Pb1P (CDAC 19150)

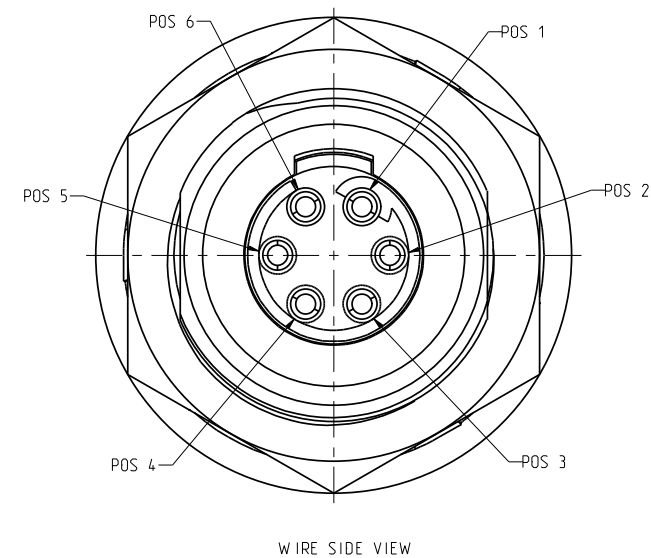
INSULATOR : PEEK WITH 15% GLASS FILLED, COLOR BROWN

FINISH:

OUTER SHELL : CHROME OVER NICKEL UNDERCOAT

OTHER BRASS PARTS  
EXCEPT SOCKET CONTACTS : NICKEL

SOCKET CONTACTS : GOLD AS PER MIL-G-45204C TYPE 1, CLASS 00.



A	RELEASED PER ECN 11353	SSF 01-26-11	SDH 01-26-11
REV	DESCRIPTION	BY DATE	CHKD DATE

DRAWING TITLE

**JBX, SIZE 0, 6 POSITION EA RECEPTAL**

CAT NO.

**JBXEA0G06FSSDP**

LINEAR MEASURE: = (INCH)  THIRD ANGLE PROJECTION   TOLERANCES UNLESS OTHERWISE SPECIFIED No. OF PLACES    mm (INCH) WHOLE No.       ±0.5 (±.02) ONE PLACE       ±0.2 (±.008) TWO PLACES      ±0.1 (±.004) ANGLES ±1°	CAGE NO: 09922	SIZE: C
---	----------------	---------

**CUSTOMER**

INTERPRET THIS DRAWING IN ACCORDANCE WITH ASME Y14.5M - 1994.

**SOURIAU**  
Connection Technology  
  
[www.souriau.com](http://www.souriau.com)

APPROVAL	DRAWN : SNL	12-23-10
	CHKD : TW	12-23-10
	DSGN : XXX	mm-dd-yy
	MFG : DH	12-23-10
	QC : DK	12-23-10
	DRAWING SCALE: B:1	
DRAWING NO.	REV	
<b>JBXEA0G06FSSDC</b>		A
1 OF 2		

**A**

