

DO NOT
SCALE FROM
THIS PRINT

TABLE 1		
ENTRY STYLE	CONTACT	BODY
-PE	SUB-HLE-PE-XX	RHLE-50-D
-TE	C-132-09-XX	RHLE-50-D
-PE-BE	SUB-HLE-PE-XX	RHLE-50-DBE

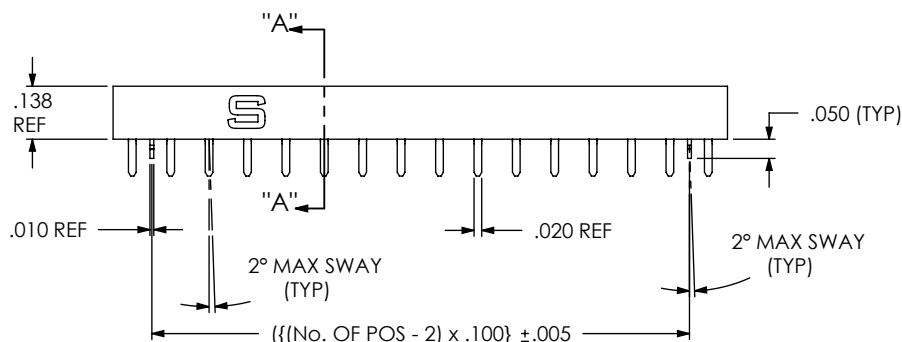
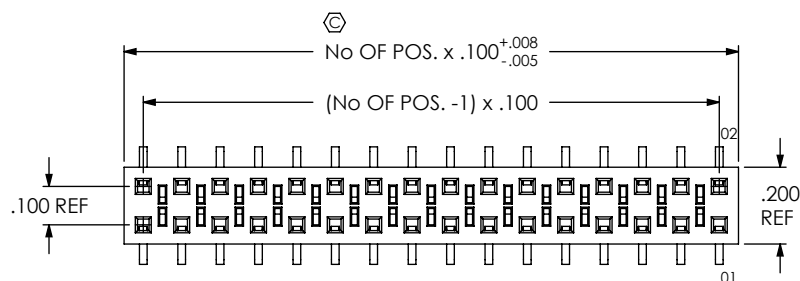


FIG 1
(-PE: PASS THROUGH ENTRY)
(SHOWN WITH -LC OPTION)

No OF POSITIONS

-02 THRU -50
(PER ROW)

LEAD STYLE

-02

PLATING SPECIFICATION

- G: 10μ" LIGHT SELECTIVE GOLD IN CONTACT AREA, 3μ" GOLD ON TAIL
- L: 10μ" LIGHT SELECTIVE GOLD IN CONTACT AREA, MATTE TIN ON TAIL
- S: 30μ" SELECTIVE GOLD IN CONTACT AREA, MATTE TIN ON TAIL
- F: 3μ" FLASH SELECTIVE GOLD IN CONTACT AREA, MATTE TIN ON TAIL
- LM: 10μ" LIGHT SELECTIVE GOLD IN CONTACT AREA, MATTE TIN ON TAIL
- SM: 30μ" SELECTIVE GOLD IN CONTACT AREA, MATTE TIN ON TAIL

OPTION

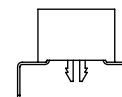
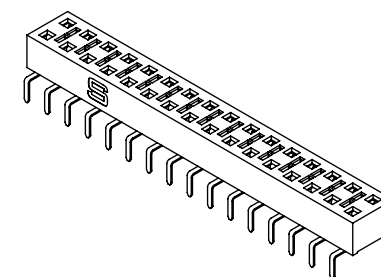
- BE: BOTTOM ENTRY
(AVAILABLE ON -PE STYLE ONLY)
(NOT AVAILABLE WITH -TE)
- LC: LOCKING CLIP (SEE NOTE 10)
(USE LC-08-TM-01)
(AVAILABLE ON -PE STYLE ONLY)
- TR: TAPE & REEL
(2 - 29 POSITIONS ONLY)
(-TE & -PE OPTIONS ONLY)
- P: METAL PAD
(USE LMP-02)
(SEE FIG 2)

ENTRY STYLE

- PE: PASS THROUGH ENTRY
(SEE FIG 1)
- TE: TOP ENTRY
(SEE FIG 2)

ROW SPECIFICATION

- DV: DOUBLE VERTICAL



(SEE SECTION "A"- "A", SHT 2 FOR DIMENSIONS)

NOTES:

1. Ⓢ REPRESENTS A CRITICAL DIMENSION.
2. CUT ASSEMBLIES AFTER FILL. CUT FLASH TO BE .010 MAX WITH NO FLASH ALLOWED IN HOLES OR EXTENDING BELOW LEADS. WILL LOSE A POSITION FOR EVERY CUT.
3. TUBE POSITIONS 03 THRU 50. LAYER PACKAGE POSITION 02.
4. ENDWALL THICKNESS: .030 ± .003.
5. MINIMUM CONTACT RETENTION IN PLASTIC: 12 OUNCES
6. AFTER PLATING, PIN IS NAMED SUB-C-132-10-X. AFTER FORMING, PIN IS C-132-10-X
7. MAX VARIATION OF 3 DEGREES WITHIN 16 PINS.
8. MEASURE FROM BEND TO TIP OF PIN.
9. MEASURE FROM CONTACT BARB AREA TO TIP OF PIN
10. DUE TO THE HIGH AMOUNT OF INSERTION FORCE NEEDED, THE -LC OPTION IS NOT COMPATIBLE WITH AUTO PLACEMENT, SAMTEC RECOMMENDS MANUAL PLACEMENT FOR ALL ASSEMBLIES WITH THE -LC OPTION.

UNLESS OTHERWISE SPECIFIED,
DIMENSIONS ARE IN INCHES.

TOLERANCES ARE:

DECIMALS	ANGLES
.XX: ±.01	2°
.XXX: ±.005	
.XXXX: ±.0020	

PROPRIETARY NOTE

THIS DOCUMENT CONTAINS INFORMATION
CONFIDENTIAL AND PROPRIETARY TO
SAMTEC, INC. AND SHALL NOT BE REPRODUCED
OR TRANSFERRED TO OTHER DOCUMENTS OR
DISCLOSED TO OTHERS OR USED FOR ANY
PURPOSE OTHER THAN THAT WHICH IT WAS
OBTAINED WITHOUT THE EXPRESSED WRITTEN
CONSENT OF SAMTEC, INC.

520 PARK EAST BLVD, NEW ALBANY, IN 47150
PHONE: 812-944-6733 FAX: 812-948-5047
e-Mail: info@SAMTEC.com code: 55322

MATERIAL: DO NOT SCALE DRAWING

SHEET SCALE: 2:1

BODY: VECTRA E130i
COLOR: BLACK

CONTACT: BeCu

F:\DWG\MISC\MKTG\HLE-1XX-02-XX-DV-XE-XX-MKT.SLDDRW

DESCRIPTION:

.100 C.L. SINGLE BEAM SOCKET STRIP

DWG. NO.

HLE-1XX-02-XX-DV-XE-XX

BY: KEVIN B

10/27/99

SHEET 1 OF 2

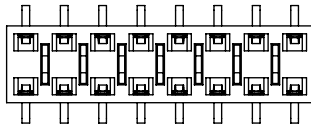


FIG 3
(BOTTOM ENTRY OPTION)

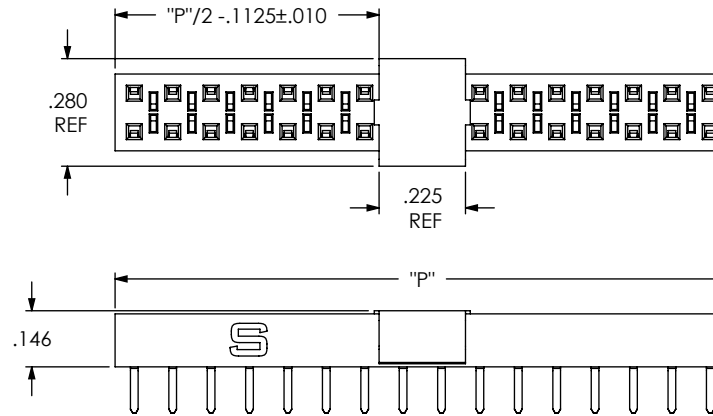
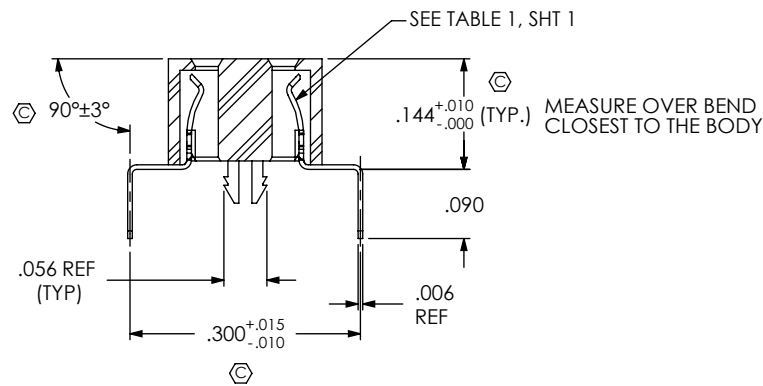
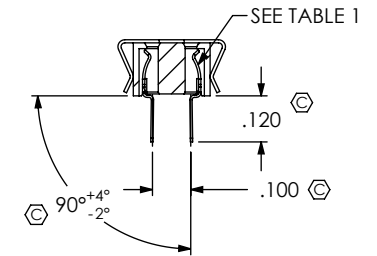
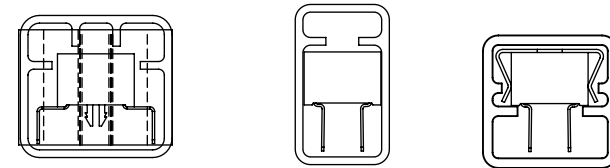


FIG 2
(-TE WITH -P OPTION)



SECTION "A"-"A"
SCALE 4 : 1

TABLE 2		
ENTRY STYLE	PACKAGING TUBE	PLUG
-PE	PT-1-24-05-38	TP-09
-TE	PT-1-24-11-09	TP-09
-TE-P	PT-HLE001-DV-TE-P	TP-03



PACKAGING VIEWS

F:\DWG\MISC\MKTG\HLE-1XX-02-XX-DV-XE-XX-MKT.SLDDRW

PROPRIETARY NOTE
THIS DOCUMENT CONTAINS INFORMATION
CONFIDENTIAL AND PROPRIETARY TO
SAMTEC, INC. AND SHALL NOT BE REPRODUCED
OR TRANSFERRED TO OTHER DOCUMENTS OR
DISCLOSED TO OTHERS OR USED FOR ANY
PURPOSE OTHER THAN THAT WHICH IT WAS
OBTAINED WITHOUT THE EXPRESSED WRITTEN
CONSENT OF SAMTEC, INC.

samtec

520 PARK EAST BLVD, NEW ALBANY, IN 47150
PHONE: 812-944-6733 FAX: 812-948-5047
e-Mail: info@SAMTEC.com code: 55322

SHEET SCALE: 2:1

DESCRIPTION:
.100 C.L. SINGLE BEAM SOCKET STRIP

DWG. NO.
HLE-1XX-02-XX-DV-XE-XX

BY: KEVIN B 10/27/99 SHEET 2 OF 2