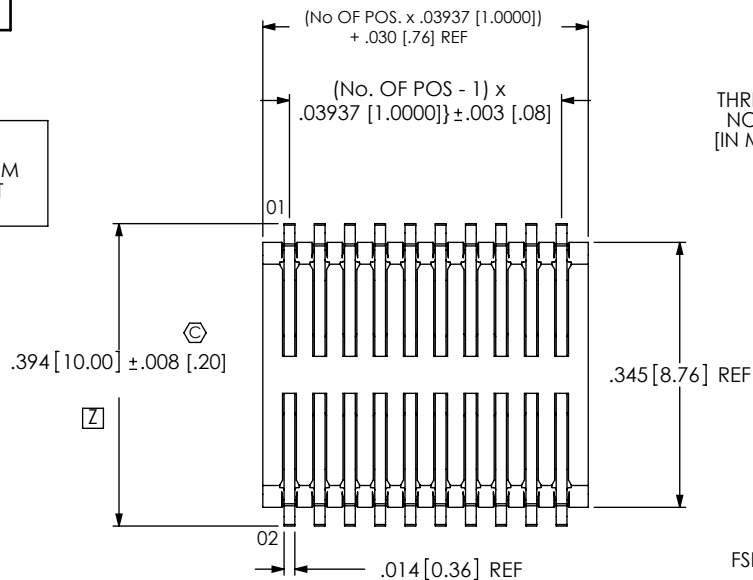


FSI-1XX-03-X-D-X-XX-XX

DO NOT
SCALE FROM
THIS PRINT



No OF POSITIONS
THREADED: -10, -20, -30, -40, -50
NON-THREADED: -05 THRU -50
[IN MULTIPLES OF 5] (SEE NOTE 8)

BODY HEIGHT
-03: 3mm HEIGHT
(USE C-133-01-X)

PLATING
-G: GOLD
(USE C-133-01-G)
-H: HEAVY GOLD
(USE C-133-01-H)

ROW SPECIFICATION
-D: DOUBLE
(USE FSI-XX-03-D)

OPTIONS

-TR: TAPE & REEL PACKAGING
(BLANK FOR TUBED PARTS)
-K: POLYAMIDE FILM PAD
(USE K-500-300)(SEE FIGS 4 & 5,
SHEET 3)
-SD: SCREW DOWN OPTION
(USE THS-4-40-.560-XX)(AVAILABLE
ON 10, 20 & 30 POS. WITH -AD ONLY;
SEE SHEET 4) (SEE NOTE 7)

**OPTION UNAVAILABLE WITH
ANY THREADED INSERT OPTION**

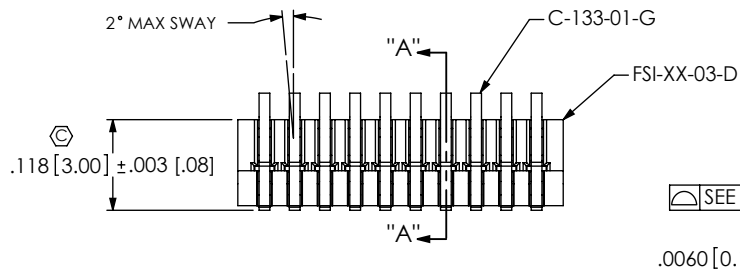
ALIGNMENT PIN OPTION

-AT: TOP SIDE (USE FSI-XX-03-D-AT-X)
-AB: BOTTOM SIDE (USE FSI-XX-03-D-AB-X)
-AD: DUAL (TOP & BOTTOM)
(USE FSI-XX-03-D-AD-X, SEE FIG 2)
-LC: LOCKING CLIP (NOT TOOLED AT THIS TIME)
BLANK FOR NO ALIGNMENT PIN.

THREADED INSERT OPTION

-E: THREADED INSERT (ENGLISH)
(USE INS-C-2-56-100, SEE FIG 3, SHT 2)
-M: THREADED INSERT (METRIC)
(USE INS-C-M2-100-N, SEE FIG 3, SHT 2)
LEAVE BLANK FOR NO THREADED INSERT.

*** = NOT RELEASED FOR PRODUCTION**



SEE TABLE 1

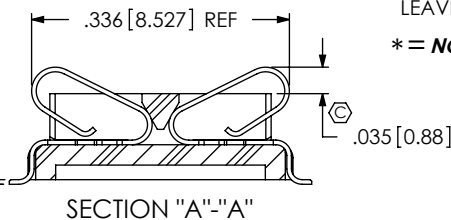
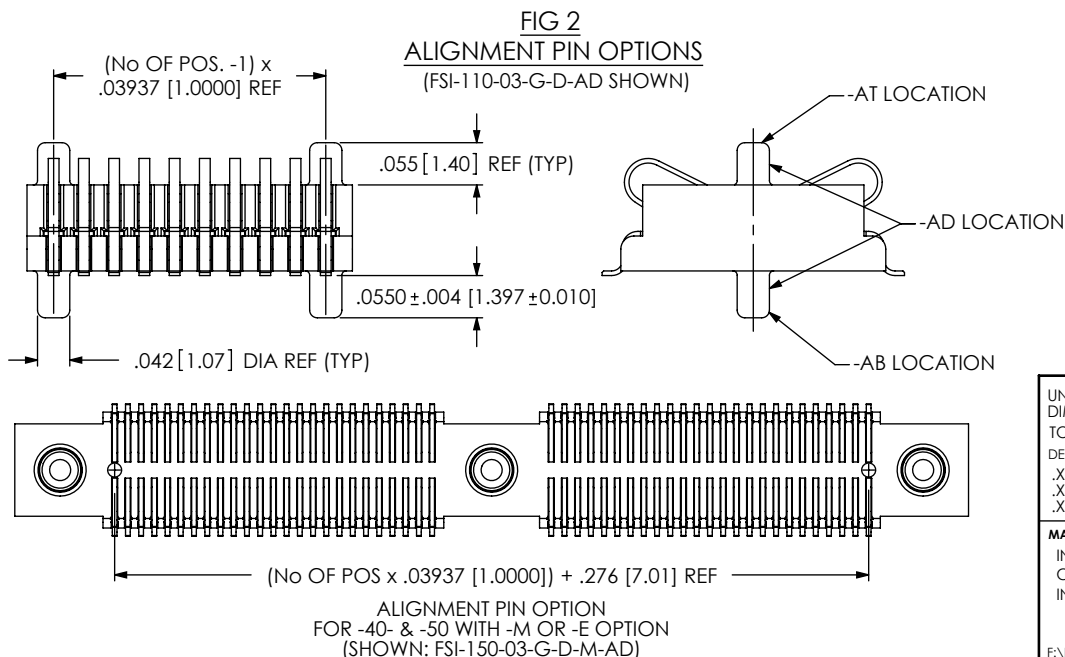
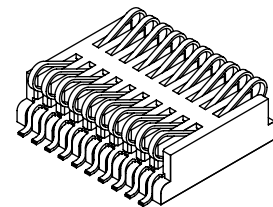
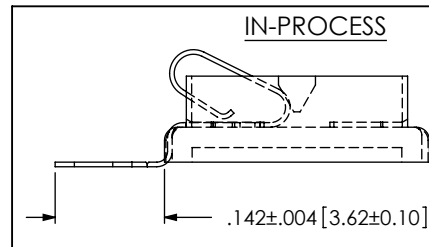


TABLE 1	
No. OF POS.	MAX COPLANARITY
0-35	.004 [.10]
40-50	.006 [.15]

NOTES:

1. Ⓢ REPRESENTS A CRITICAL DIMENSION.
2. MINIMUM PUSHOUT FORCE: 12 oz.
3. LOAD INSERTS IN DIRECTION OF THE ARROW USING HAND LOAD THERMAL INSERTION PRESS.
4. THREADED INSERT MUST BE ABLE TO HANDLE 20 in-oz's OF TORQUE MIN WITHOUT ROTATING OR "LOOSENING".
5. THREADED INSERT RETENSION TO BE 7lbs. MIN.
6. THREADED INSERT TO BE FLUSH TO .005[0.13] BELOW HOUSING SURFACE.
7. -SD OPTION: RETENTION TO BE 3lb MIN AND MUST WITHSTAND 6 in-oz's OF TORQUE.
8. APPLICATIONS REQUIRING 40-50 POSITIONS WITHOUT THREADED INSERTS, PLEASE CONTACT SAMTEC INERCONNECT PROCESSING GROUP.



UNLESS OTHERWISE SPECIFIED,
DIMENSIONS ARE IN INCHES.

TOLERANCES ARE:

DECIMALS ANGLES
.XX: ± .01 [.2]
.XXX: ± .005 [.13]
.XXXX: ± .0020 [.050]

PROPRIETARY NOTE

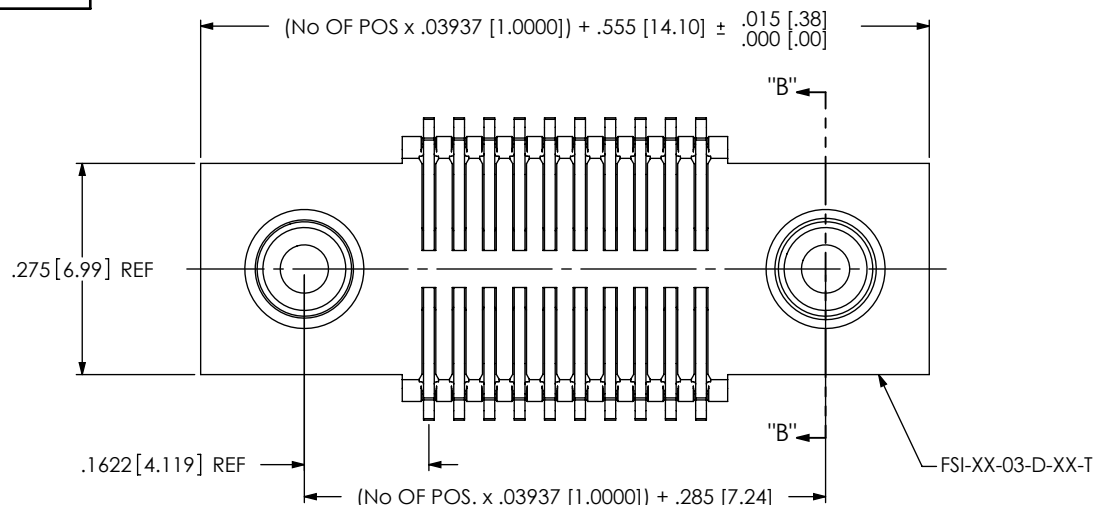
THIS DOCUMENT CONTAINS INFORMATION
CONFIDENTIAL AND PROPRIETARY TO
SAMTEC, INC. AND SHALL NOT BE REPRODUCED
OR TRANSFERRED TO OTHER DOCUMENTS OR
DISCLOSED TO OTHERS OR USED FOR ANY
PURPOSE OTHER THAN THAT WHICH IT WAS
OBTAINED WITHOUT THE EXPRESSED WRITTEN
CONSENT OF SAMTEC, INC.

MATERIAL: DO NOT SCALE DRAWING SHEET SCALE: 4:1
INSULATOR: VECTRA E130i
CONTACT: BeCu
INSERT: BRASS

DESCRIPTION:
1mm SINGLE ELEMENT INTERFACE

DWG. NO.
FSI-1XX-03-X-D-X-XX-XX

BY: BRATCHER 1/27/99 SHEET 1 OF 4



[Z]

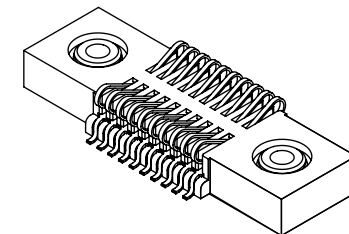
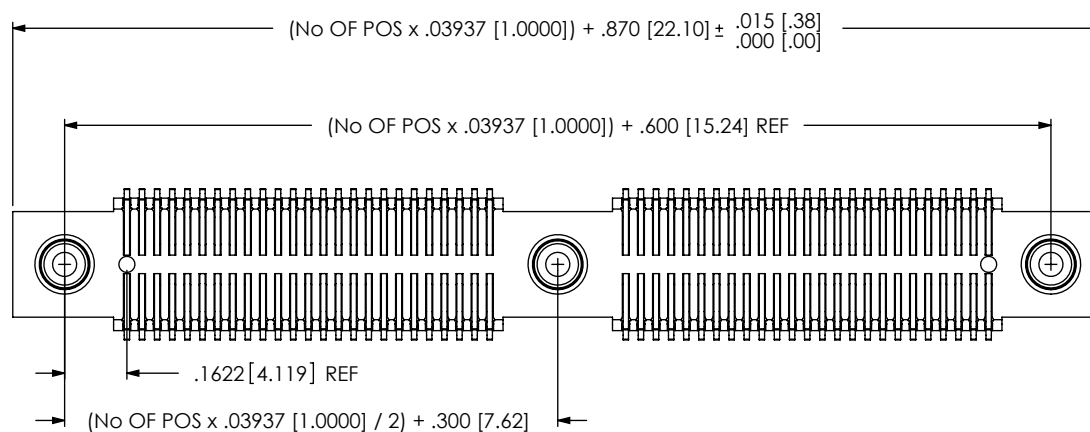
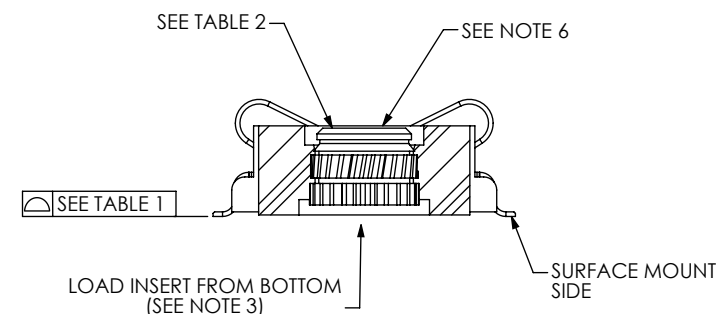


FIG 3

-M & -E: THREADED OPTIONS
(FSI-110-03-G-D-M SHOWN)
(EQUATIONS APPLY TO -10, -20 & -30 ONLY)

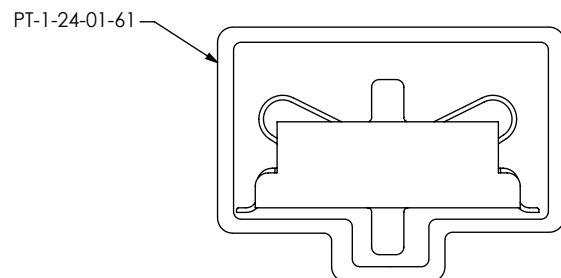


FOR -40- & -50 WITH -M OR -E OPTION
(SHOWN: FSI-150-03-X-D-M-AD)



SECTION "B"- "B"

PACKAGING VIEW



NOTE:

PARTS ARE TO BE PACKAGED IN PT-1-24-01-61 TUBES
WITH TWO TP-03 PLUGS PER TUBE.

F:\DWG\MISC\MKTG\FSI-1XX-03-X-D-X-XX-XX-MKT.SLDDRW

TABLE 2: INSERT OPTION		
OPTION	INSERT	THREAD
-E	INS-C-2-56-100	2 x 56
-M	INS-C-M2-100-N	M2.0 x 4

PROPRIETARY NOTE

THIS DOCUMENT CONTAINS INFORMATION
CONFIDENTIAL AND PROPRIETARY TO
SAMTEC, INC. AND SHALL NOT BE REPRODUCED
OR TRANSFERRED TO OTHER DOCUMENTS OR
DISCLOSED TO OTHERS OR USED FOR ANY
PURPOSE OTHER THAN THAT WHICH IT WAS
OBTAINED WITHOUT THE EXPRESSED WRITTEN
CONSENT OF SAMTEC, INC.

DO NOT SCALE DRAWING

SHEET SCALE: 4:1

samtec

520 PARK EAST BLVD, NEW ALBANY, IN 47150
PHONE: 812-944-6733 FAX: 812-948-5047
e-Mail: info@SAMTEC.com code: 55322

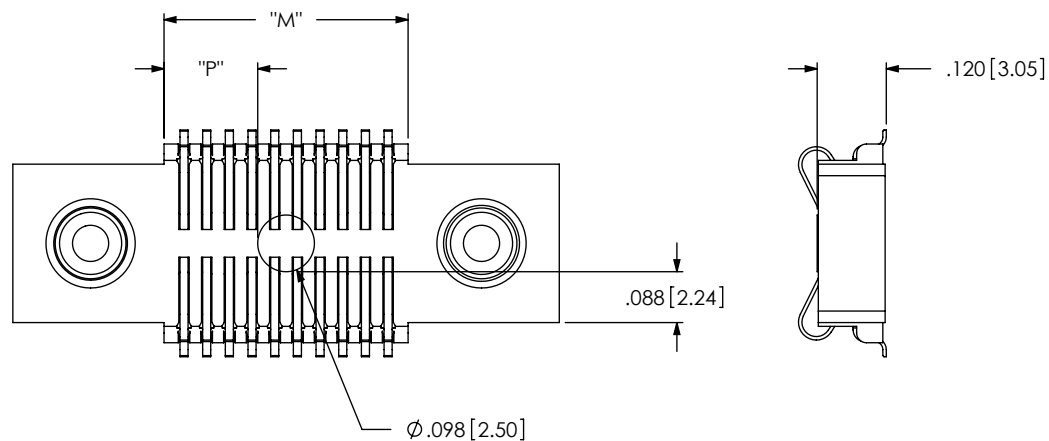
DESCRIPTION:
1mm SINGLE ELEMENT INTERFACE

DWG. NO.
FSI-1XX-03-X-D-X-XX-XX

BY: BRATCHER 1/27/99 SHEET 2 OF 4

FIG 4

-K: POLYAMIDE FILM PAD
(.098 [2.50] DIA PAD USED ON ALL POSITIONS
EXCEPT -40 & -50 POSITIONS WITH
THREADED INSERT OPTION)

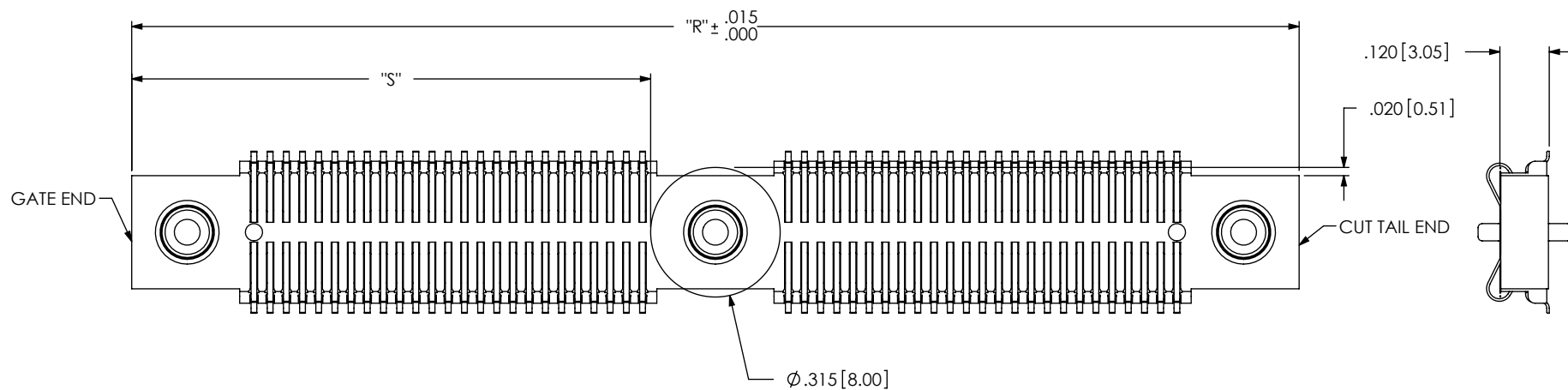


$$\text{"M"} = (\text{No OF POS} \times .03937 [1.000]) + .030 [.76] \text{ REF}$$

$$\text{"P"} = \{(\text{"M"} - .098 [2.50]) / 2\} \pm .020 [.51]$$

FIG 5

-K: POLYAMIDE FILM PAD
(.315 [8.00] DIA PAD USED ONLY ON
-40 & -50 POSITIONS WITH
THREADED INSERT OPTION)



$$\text{"R"} = (\text{No OF POS} \times .03937 [1.000]) + .870 [22.10] \text{ REF}$$

$$\text{"S"} = \{(\text{"R"} - .295 [7.50]) / 2\} \pm .020 [.51]$$

PROPRIETARY NOTE

THIS DOCUMENT CONTAINS INFORMATION
CONFIDENTIAL AND PROPRIETARY TO
SAMTEC, INC. AND SHALL NOT BE REPRODUCED
OR TRANSFERRED TO OTHER DOCUMENTS OR
DISCLOSED TO OTHERS OR USED FOR ANY
PURPOSE OTHER THAN THAT WHICH IT WAS
OBTAINED WITHOUT THE EXPRESSED WRITTEN
CONSENT OF SAMTEC, INC.

DO NOT SCALE DRAWING

SHEET SCALE: 3:1

samtec

520 PARK EAST BLVD, NEW ALBANY, IN 47150
PHONE: 812-944-6733 FAX: 812-948-5047
e-Mail: info@SAMTEC.com code: 55322

DESCRIPTION:

1mm SINGLE ELEMENT INTERFACE

DWG. NO.

FSI-1XX-03-X-D-X-XX-XX

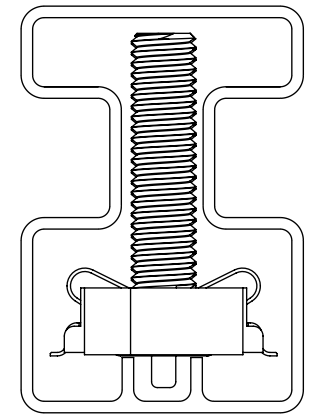
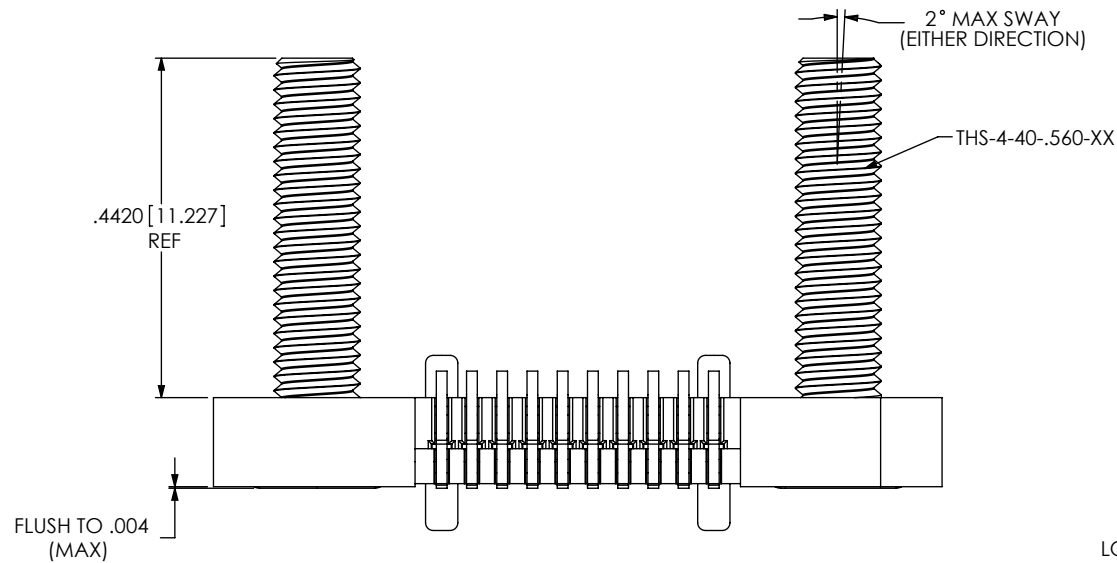
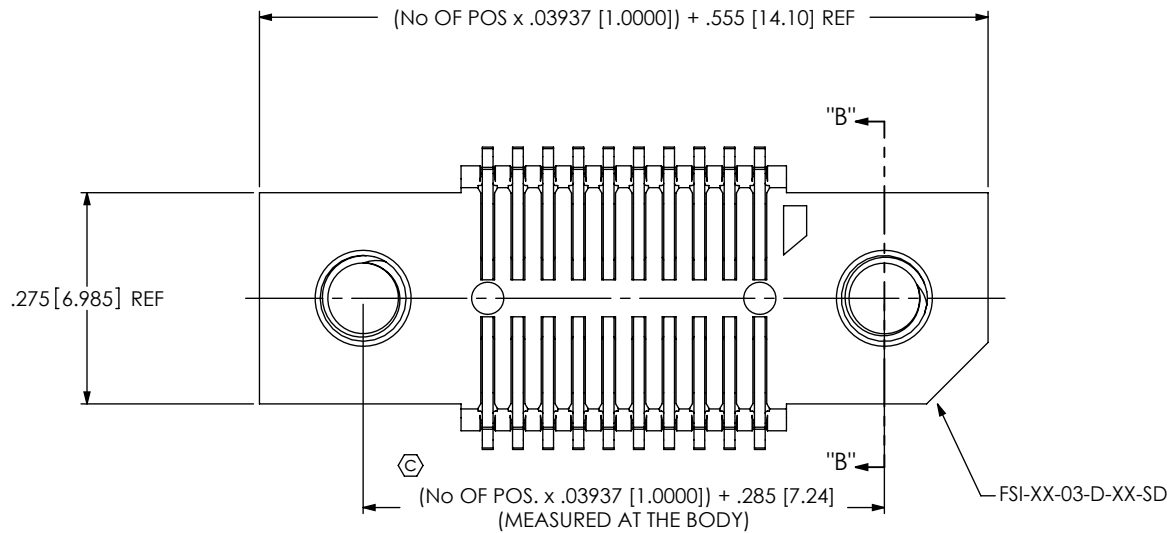
BY: BRATCHER 1/27/99

SHEET 3 OF 4

-SD: SCREW DOWN OPTION
(FSI-110-03-G-D-AD-SD SHOWN)
(AVAILABLE IN POS -10, -20 & -30 WITH -AD OPTION ONLY)

**OPTION UNAVAILABLE WITH
ANY THREADED INSERT OPTION**

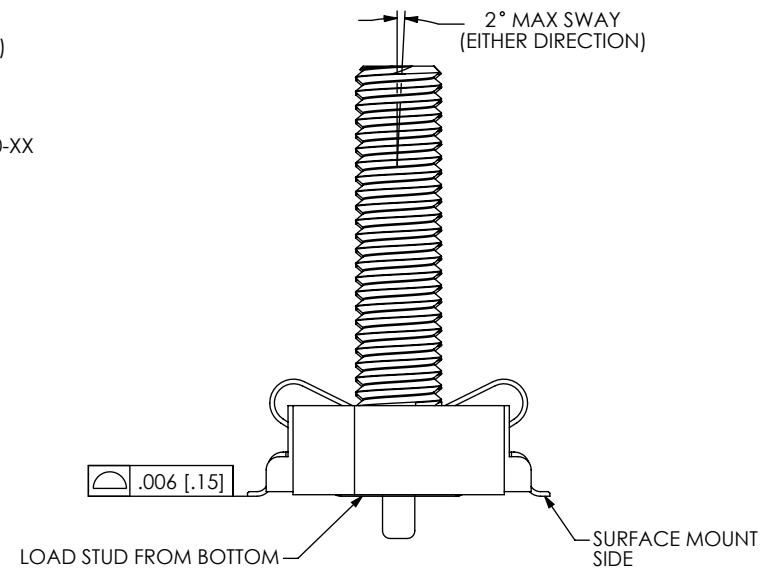
FIG 6



PACKAGING VIEW

NOTE:

PARTS ARE TO BE PACKAGED IN PT-FSI001-03-SD
TUBES WITH TWO TP-03 PLUGS PER TUBE.



PROPRIETARY NOTE

THIS DOCUMENT CONTAINS INFORMATION
CONFIDENTIAL AND PROPRIETARY TO
SAMTEC, INC. AND SHALL NOT BE REPRODUCED
OR TRANSFERRED TO OTHER DOCUMENTS OR
DISCLOSED TO OTHERS OR USED FOR ANY
PURPOSE OTHER THAN THAT WHICH IT WAS
OBTAINED WITHOUT THE EXPRESSED WRITTEN
CONSENT OF SAMTEC, INC.

DO NOT SCALE DRAWING

SHEET SCALE: 3:1

samtec

520 PARK EAST BLVD, NEW ALBANY, IN 47150
PHONE: 812-944-6733 FAX: 812-948-5047
e-Mail: info@SAMTEC.com code: 55322

DESCRIPTION:
1mm SINGLE ELEMENT INTERFACE

DWG. NO.
FSI-1XX-03-X-D-X-XX-XX

BY: BRATCHER 1/27/99 SHEET 4 OF 4