

Evaluation Kit for PA50, PA52 Power Op Amps

INTRODUCTION

This easy-to-use kit provides a platform for the evaluation of linear power amplifiers circuits using the PA50/PA52 pin out. With ample breadboarding areas it is flexible enough to analyze a multitude of standard or proprietary circuit configurations. Critical connections for power supply bypassing are pre-wired. Components not usually readily available in engineering labs are provided. External connection to the evaluation kit can be made via the terminal block and terminal pads at the edges of the circuit board. The terminal pads are suitable for soldering standard banana jacks or direct soldering of wires. The schematic is shown in Figure 2.

BEFORE YOU GET STARTED

- * All Apex Microtechnology amplifiers should be handled using proper ESD precautions.
- * Do not change connections while the circuit is powered.
- * Initially set all power supplies to the minimum operating voltage allowed in the device data sheet.

PARTS LIST

Apex Part #	Description	Quantity
HS18	Heatsink	1
MS04	PC mount Cage Jacks	1 Bag/12 each
EVAL29	PC Board	1
60SPG00001	Spacer Grommets	4
OX7R105KWN	1µF Cap 1825B105K201N, Novacap	6
TS02	Terminal Strip Beau Interconnect 66507	1
TWO5	Thermal Washer	1 Box/12 each
EC05	2200 µf Cap 100V United Chemi-Con	2
EC03	82DA222M100KC2D 680µF 200V United Chemi-Con KMH200VN681M25X40T2	2

ASSEMBLY

During assembly refer to Figure 1

1. Note that each circuit board side is identified. From the circuit side of the circuit board (not the component side) insert and solder cage jack MS04 at pins 1-12. Be sure that the cage jack sits flush with the surface of the circuit board.
2. Solder the surface mount ceramic capacitors to the component of the circuit board at C3-C7.
3. Mount the electrolytic capacitors at C1 and C2 from the component side of the circuit board and solder from the circuit side of the circuit board. Note polarity and be sure to fill the holes with solder. Use correct voltage capacitor for your application.
4. Mount the terminal strip TS02 to the component side of the circuit board. Make sure the terminal strip sits flat against the circuit board and be sure to fill the holes with solder.
5. Use #14 sleeving to insulate and align at least 2 opposite pins of the amplifier.
6. Add other components to complete your circuit design. Note that the solder terminals labeled 2 and 3 are left for you to connect to the amplifier via the components that you will add for your particular design.
7. Push the four nylon spacers into the circuit board from the circuit side of the circuit board at the four corner locations.
8. Apply TW05 thermal washer to the bottom of the PA50. Mount the amplifier to the HS18 heat sink provided and loosely attach with #6 screw and nut.
9. Place the assembled circuit board over the pins of the amplifier making sure that the pin 1 location on the circuit board matches up with pin 1 of the amplifier. Insert the pins of the amplifier into the circuit board mating cage jacks.
10. Mount the circuit board assembly to the heat sink with #6 self tapping or sheet metal screws at the four corners of the heat sink.
11. Tighten the screws that mount the amplifier to the heat sink via the access holes in the circuit board.

FIGURE 1.

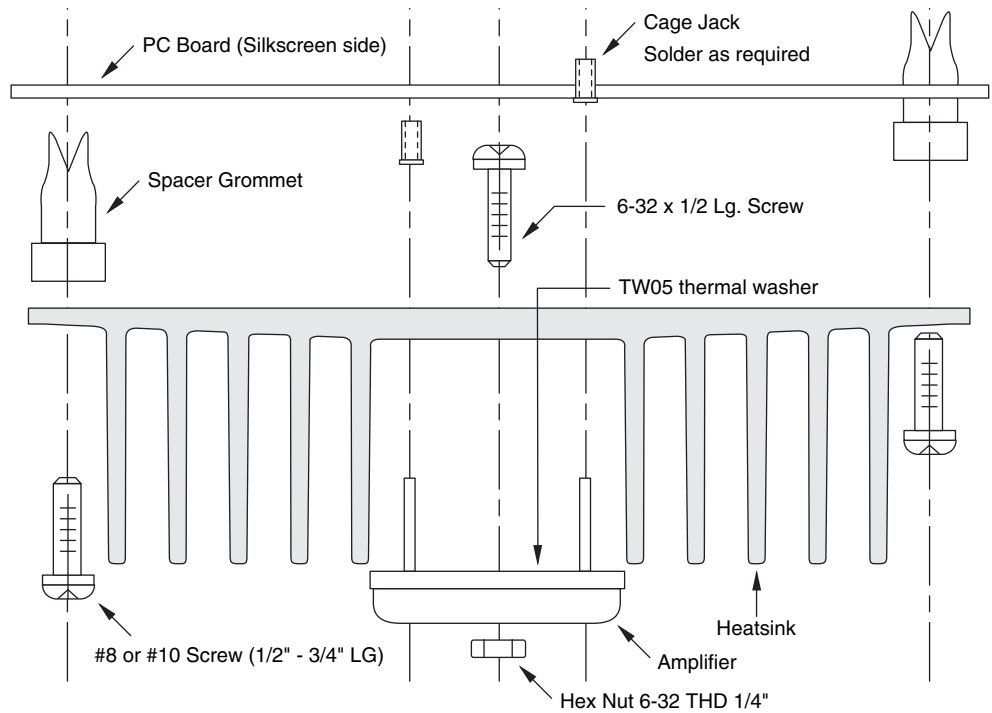


FIGURE 2. PCB SCHEMATIC.

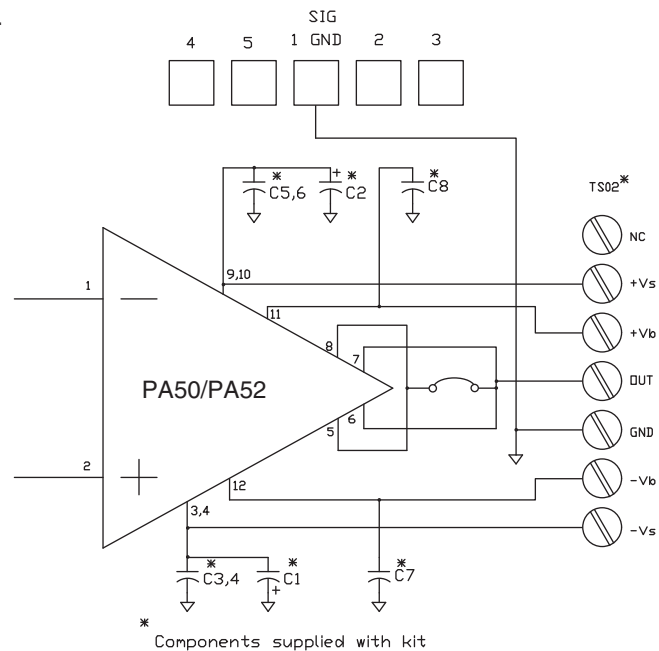
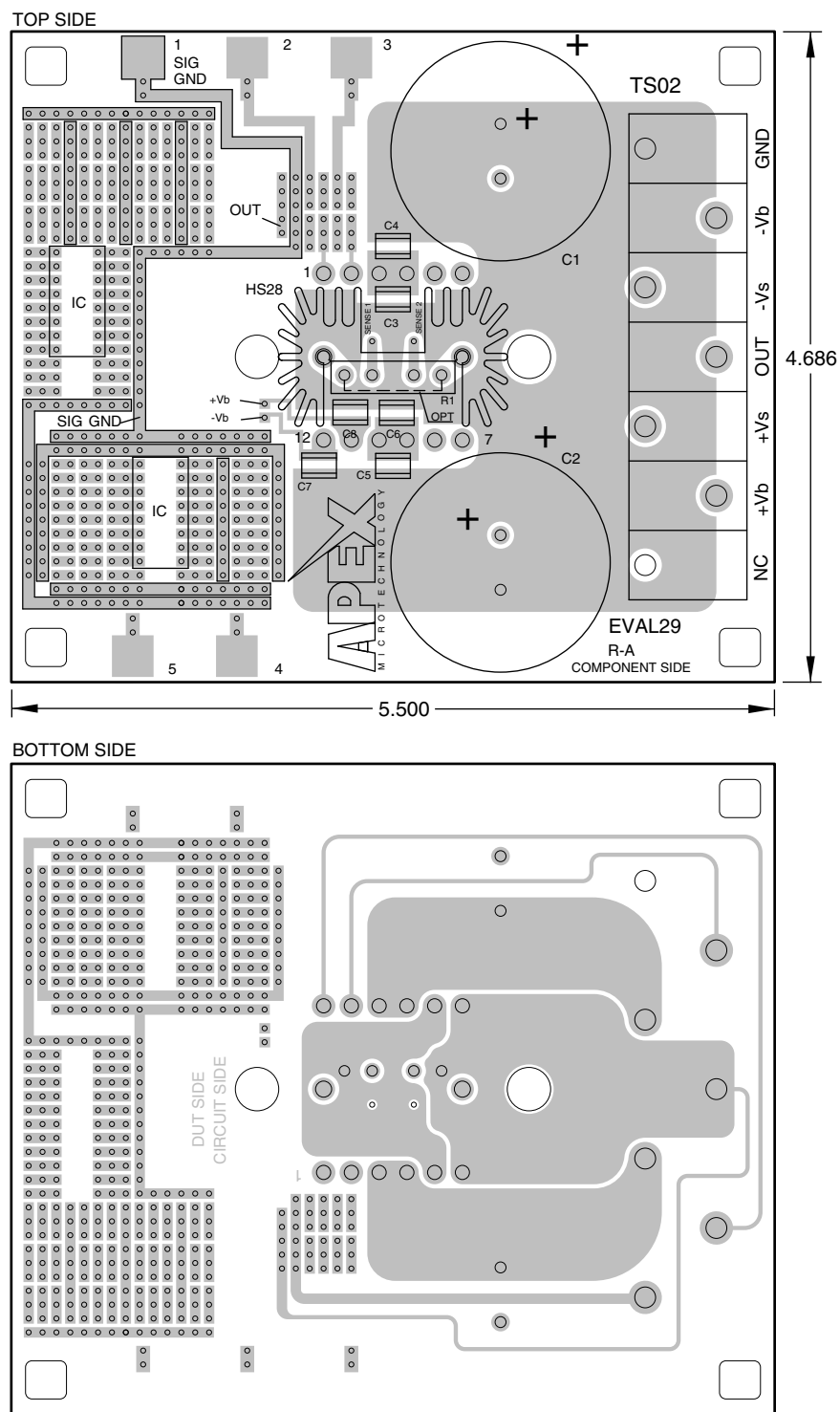


Figure 2 shows the schematic of the pre-wired connections of the EK27. Components which are supplied with the kit are marked *

FIGURE 3. PCB



NEED TECHNICAL HELP? CONTACT APEX SUPPORT!

For all Apex Microtechnology product questions and inquiries, call toll free 800-546-2739 in North America.

For inquiries via email, please contact apex.support@apexanalog.com.

International customers can also request support by contacting their local Apex Microtechnology Sales Representative.

To find the one nearest to you, go to www.apexanalog.com

IMPORTANT NOTICE

Apex Microtechnology, Inc. has made every effort to insure the accuracy of the content contained in this document. However, the information is subject to change without notice and is provided "AS IS" without warranty of any kind (expressed or implied). Apex Microtechnology reserves the right to make changes without further notice to any specifications or products mentioned herein to improve reliability. This document is the property of Apex Microtechnology and by furnishing this information, Apex Microtechnology grants no license, expressed or implied under any patents, mask work rights, copyrights, trademarks, trade secrets or other intellectual property rights. Apex Microtechnology owns the copyrights associated with the information contained herein and gives consent for copies to be made of the information only for use within your organization with respect to Apex Microtechnology integrated circuits or other products of Apex Microtechnology. This consent does not extend to other copying such as copying for general distribution, advertising or promotional purposes, or for creating any work for resale.

APEX MICROTECHNOLOGY PRODUCTS ARE NOT DESIGNED, AUTHORIZED OR WARRANTED TO BE SUITABLE FOR USE IN PRODUCTS USED FOR LIFE SUPPORT, AUTOMOTIVE SAFETY, SECURITY DEVICES, OR OTHER CRITICAL APPLICATIONS. PRODUCTS IN SUCH APPLICATIONS ARE UNDERSTOOD TO BE FULLY AT THE CUSTOMER OR THE CUSTOMER'S RISK.

Apex Microtechnology, Apex and Apex Precision Power are trademarks of Apex Microtechnology, Inc. All other corporate names noted herein may be trademarks of their respective holders.