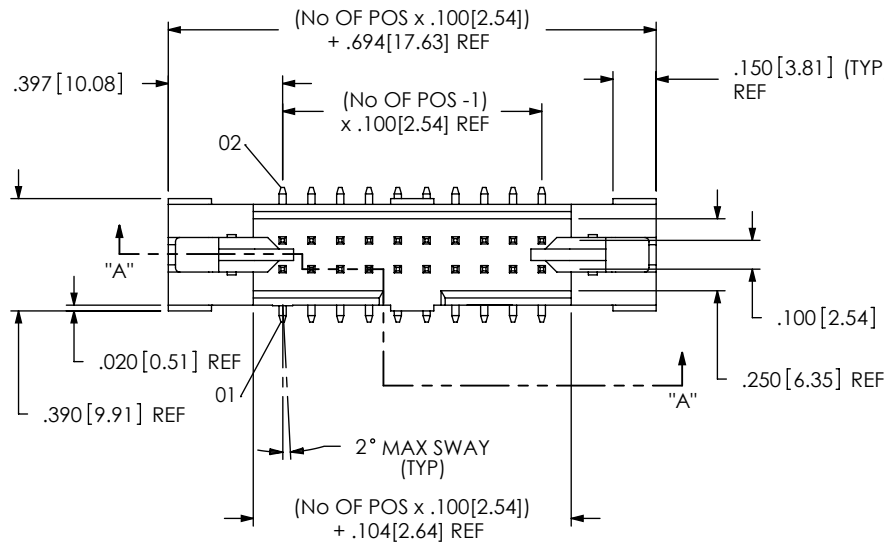


DO NOT
SCALE FROM
THIS PRINT



EJH-1XX-XX-XX-D-XX-XX-XX

No OF POSITIONS
-05 THRU -25

LEAD STYLE

- 01: STANDARD
(USE EJH-XX-D)
- 02: EXTENDED
(SEE FIG 11, SHEET 4)
(USE EJH-XX-D-EXT &
EHA-03-EXT)
- PLATING SPECIFICATION
- S: SELECTIVE GOLD
(USE T-1S6X-XX-S-X)
- F: FLASH SELECTIVE GOLD
(USE T-1S6X-XX-F-X)
- SM: SELECTIVE HEAVY GOLD
(USE T-1S6X-XX-S-X)
- FM: FLASH SELECTIVE GOLD,
MATTE TIN TAIL
(USE T-1S6X-XX-F-X)
- L: LIGHT SELECTIVE GOLD
MATTE TIN TAIL
(USE T-1S6X-XX-L-X)

OPTION

- LC: LOCKING CLIP (FOR -SM ONLY)
(SEE NOTE 10)
- P: PICK & PLACE PAD (FOR -SM ONLY)
(USE PPP-50, SEE FIGURE 6, SHEET 3)
- K: POLYAMIDE FILM (SEE FIG 3, SHEET 3)
(USE K-850-650)
- TR: TAPE & REEL PACKAGING
(SEE FIG 7, SHEET 3)
(FOR -SM-P, & -SM-K ONLY)
(NOT AVAILABLE ON -SM-LC)
(NOT AVAILABLE ON -25 POSITION)

POLARIZED OPTION

-XX = PIN OMITED

TAIL OPTION

- SM: SURFACE MOUNT (SEE FIG. 1)
- TH: THROUGH HOLE (SEE FIG 8, SHEET 2)
- RA: RIGHT ANGLE (SEE FIG 9, SHEET 2)

ROW SPECIFICATION

-D: DOUBLE

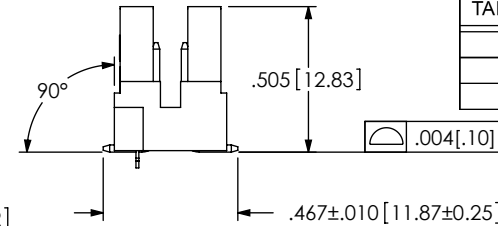
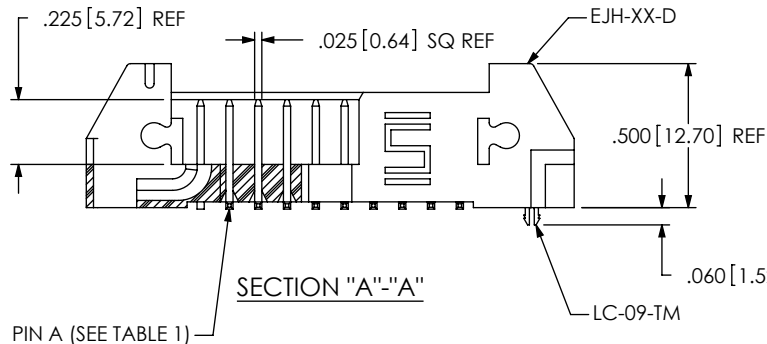


TABLE 1		
TAIL OPTION	PIN A	PIN B
-SM	T-1S6-08-XX-2	--
-TH	T-1S6-22-XX-2	--
-RA	T-1S64-01-XX	T-1S64-02-XX

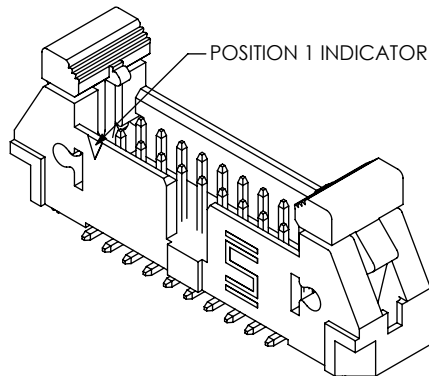
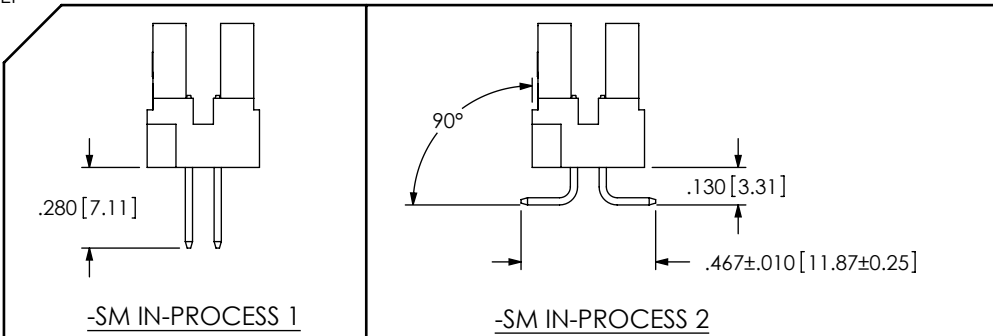


FIG 1
EJH-110-01-X-D-SM-LC SHOWN

NOTES:

- ⊕ REPRESENTS A CRITICAL DIMENSION.
- COPLANARITY TO BE: .004 MAX FOR POSITIONS -05 THRU -10
.006 MAX FOR POSITIONS -15 THRU -25
- BURR ALLOWANCE: .0015 MAX.
- MINIMUM PUSHOUT FORCE: 1 LB MIN.
- MAXIMUM ALLOWABLE BOW: .002 INCH/INCH AFTER ASSEMBLY.
- PARTS TO BE TUBED WITH EJECTOR ARMS IN THE UP POSITION
AS SHOWN.
- REPRESS TO DIMENSION SHOWN.
- NOTE DELETED.
- MEASURE FROM THE TIPS OF THE TERMINALS.
- DUE TO THE HIGH AMOUNT OF INSERTION FORCE NEEDED, THE -LC
OPTION IS NOT COMPATIBLE WITH AUTO PLACEMENT. SAMTEC
RECOMMENDS MANUAL PLACEMENT FOR ALL ASSEMBLIES WITH
THE -LC OPTION.



UNLESS OTHERWISE SPECIFIED,
DIMENSIONS ARE IN INCHES.

TOLERANCES ARE:

DECIMALS

.XX: ±.01 [.3]

.XXX: ±.005 [.13]

.XXXX: ±.0020 [.051]

ANGLES

2°

PROPRIETARY NOTE

THIS DOCUMENT CONTAINS INFORMATION
CONFIDENTIAL AND PROPRIETARY TO
SAMTEC, INC. AND SHALL NOT BE REPRODUCED
OR TRANSFERRED TO OTHER DOCUMENTS OR
DISCLOSED TO OTHERS OR USED FOR ANY
PURPOSE OTHER THAN THAT WHICH IT WAS
OBTAINED WITHOUT THE EXPRESSED WRITTEN
CONSENT OF SAMTEC, INC.

samtec

520 PARK EAST BLVD, NEW ALBANY, IN 47150
PHONE: 812-944-6733 FAX: 812-948-5047
e-Mail: info@SAMTEC.com code: 55322

MATERIAL:

- 01 INSULATOR: VECTRA E130i, COLOR: BLACK
- 02 INSULATOR COLOR: NATURAL
- TERMINAL: PHOS BRONZE 510 3/4 HARD

F:\DWG\MISC\MKTG\EJH-1XX-XX-XX-D-XX-XX-XX-MKT.SLDDRW

SHEET SCALE: 1:0.6666666666666667

DESCRIPTION:

.100 x .100 EJECTOR HEADER ASSEMBLY

DWG. NO.

EJH-1XX-XX-XX-D-XX-XX-XX

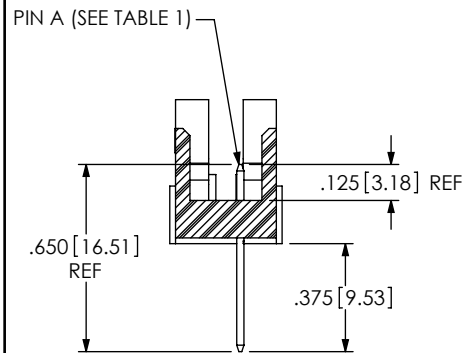
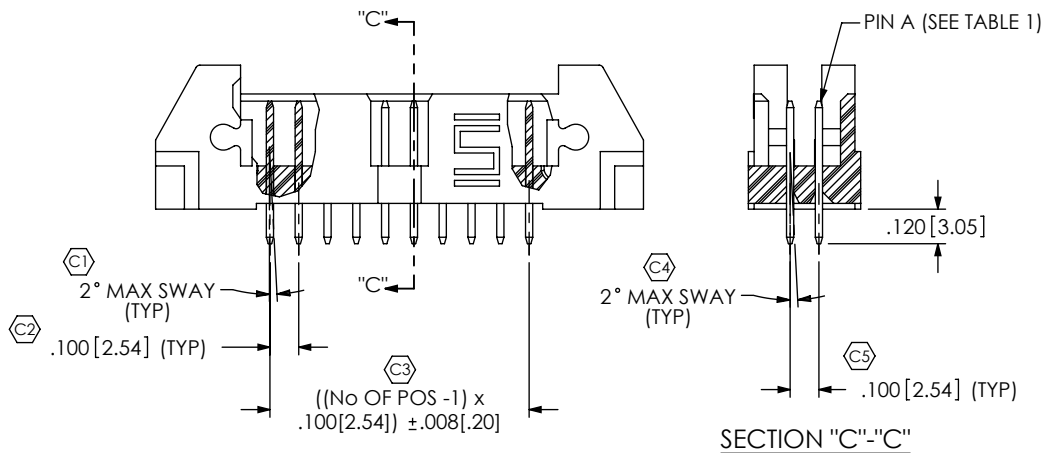
BY: ERIC M.

09/19/01

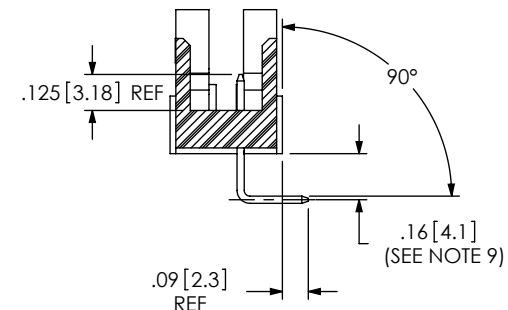
SHEET 1 OF 4

FIG 8

EJH-110-01-X-D-TH SHOWN
[DIFFERENT AS SHOWN, OTHERWISE SAME AS FIG 1]



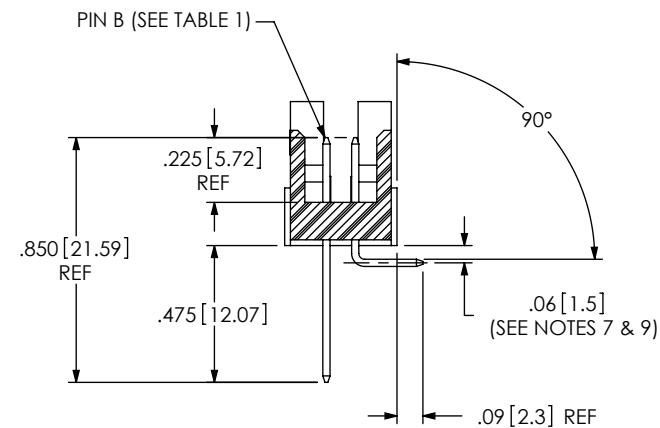
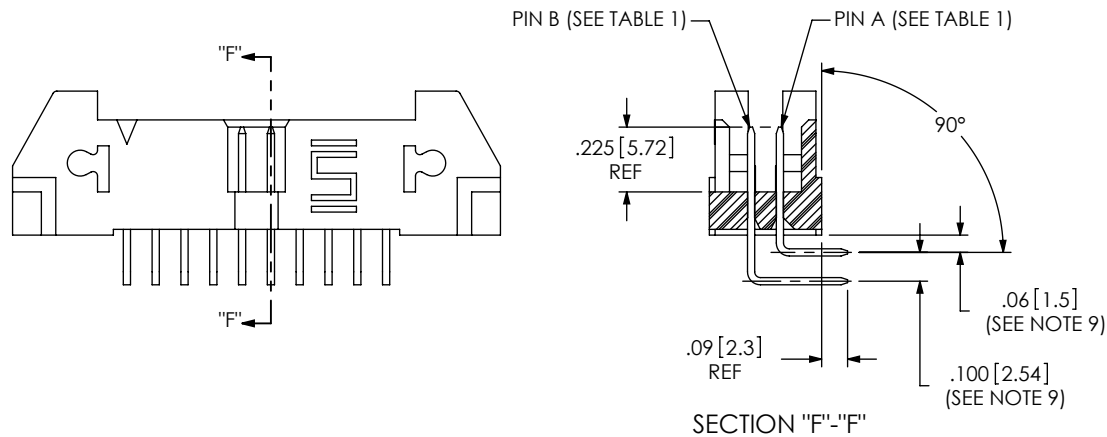
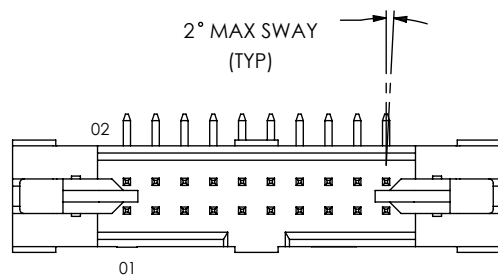
-RA IN-PROCESS 1



-RA IN-PROCESS 2

FIG 9

EJH-110-01-X-D-RA SHOWN
[DIFFERENT AS SHOWN, OTHERWISE SAME AS FIG 1]



-RA IN-PROCESS 3

PROPRIETARY NOTE

THIS DOCUMENT CONTAINS INFORMATION
CONFIDENTIAL AND PROPRIETARY TO
SAMTEC, INC. AND SHALL NOT BE REPRODUCED
OR TRANSFERRED TO OTHER DOCUMENTS OR
DISCLOSED TO OTHERS OR USED FOR ANY
PURPOSE OTHER THAN THAT WHICH IT WAS
OBTAINED WITHOUT THE EXPRESSED WRITTEN
CONSENT OF SAMTEC, INC.

DO NOT SCALE DRAWING

SHEET SCALE: 1.5:1

samtec

520 PARK EAST BLVD, NEW ALBANY, IN 47150
PHONE: 812-944-6733 FAX: 812-948-5047
e-Mail: info@SAMTEC.com code: 55322

DESCRIPTION:
.100 x .100 EJECTOR HEADER ASSEMBLY

DWG. NO.
EJH-1XX-XX-XX-D-XX-XX-XX

BY: ERIC M. 09/19/01 SHEET 2 OF 4

FIG 2
ARM ASSEMBLY & ROTATION

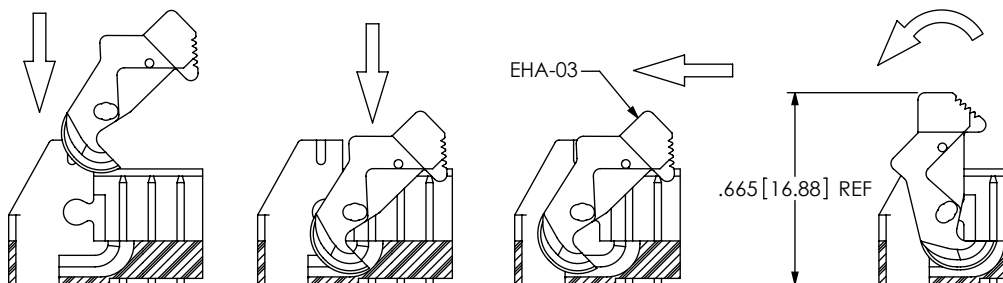
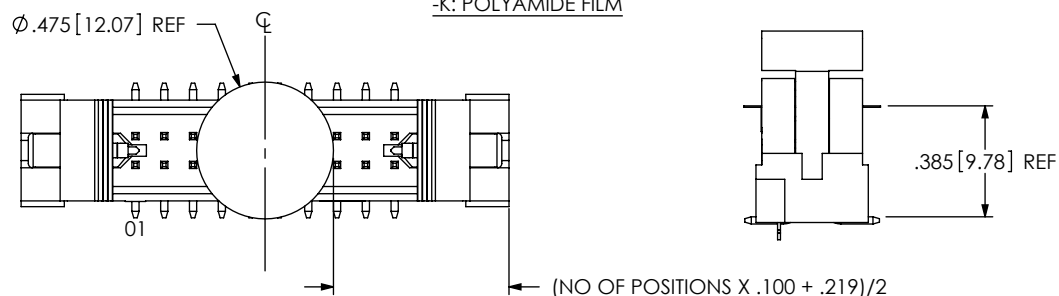


FIG 3
-K: POLYAMIDE FILM



PACKAGING TUBE VIEWS

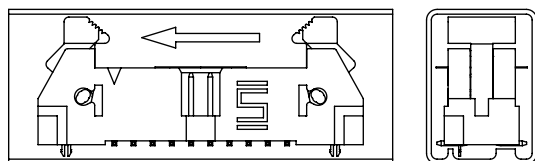


FIG 4
SURFACE MOUNT
(SEE NOTE 6)

TUBE: PT-1-24-01-121
PLUG: TP-13

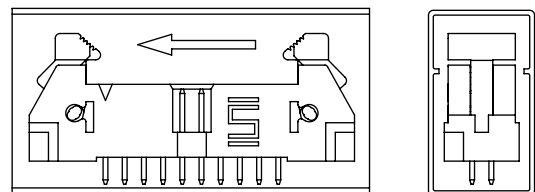


FIG 5
THROUGH HOLE
(SEE NOTE 6)

TUBE: PT-1-24-02-74
PLUG: TP-26

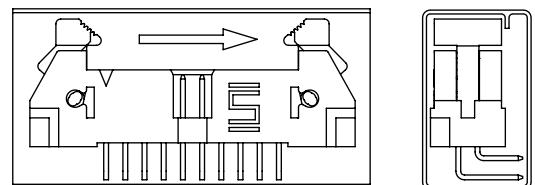
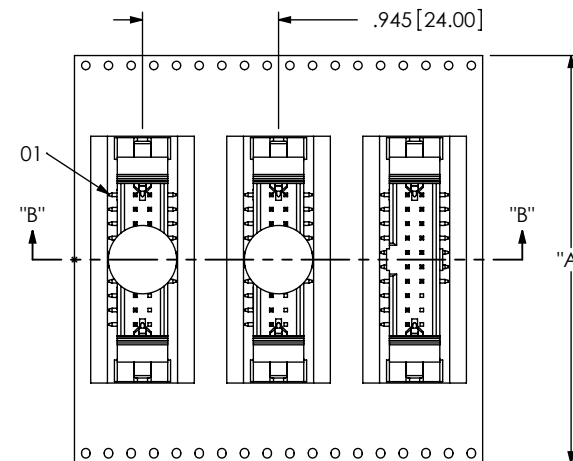
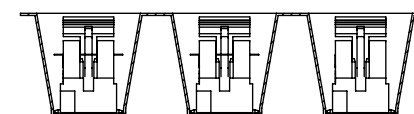


FIG 10
RIGHT ANGLE
(SEE NOTE 6)

TUBE: PT-1-24-01-131
PLUG: TP-26



USER DIRECTION OF UN-REELING
POCKET NOT DETAILED



SECTION "B"- "B"
SCALE 0.75 : 1

No OF POS	"A"
-05	2.205 [56.00]
-07	2.205 [56.00]
-10	2.835 [72.00]
-15	3.465 [88.00]
-20	3.465 [88.00]

TOTAL PARTS PER REEL: 125

FIG 7
-TR TAPE & REEL PACKAGING

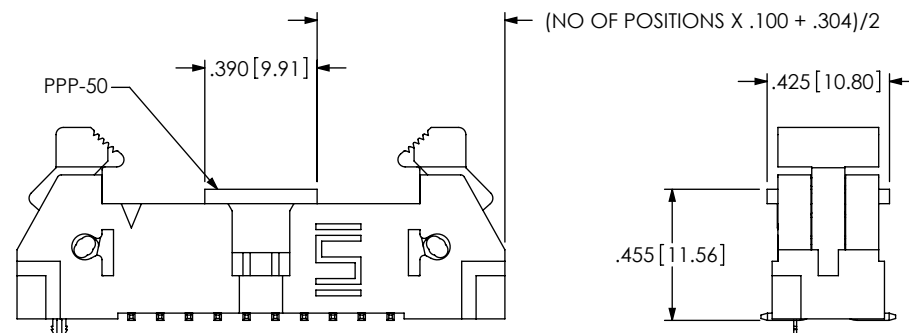


FIG. 6
-P: PICK & PLACE PAD

PROPRIETARY NOTE
THIS DOCUMENT CONTAINS INFORMATION
CONFIDENTIAL AND PROPRIETARY TO
SAMTEC, INC. AND SHALL NOT BE REPRODUCED
OR TRANSFERRED TO OTHER DOCUMENTS OR
DISCLOSED TO OTHERS OR USED FOR ANY
PURPOSE OTHER THAN THAT WHICH IT WAS
OBTAINED WITHOUT THE EXPRESSED WRITTEN
CONSENT OF SAMTEC, INC.

DO NOT SCALE DRAWING

SHEET SCALE: 1:0.666667

samtec

520 PARK EAST BLVD, NEW ALBANY, IN 47150
PHONE: 812-944-6733 FAX: 812-948-5047
e-Mail: info@SAMTEC.com code: 55322

DESCRIPTION:
.100 x .100 EJCTOR HEADER ASSEMBLY

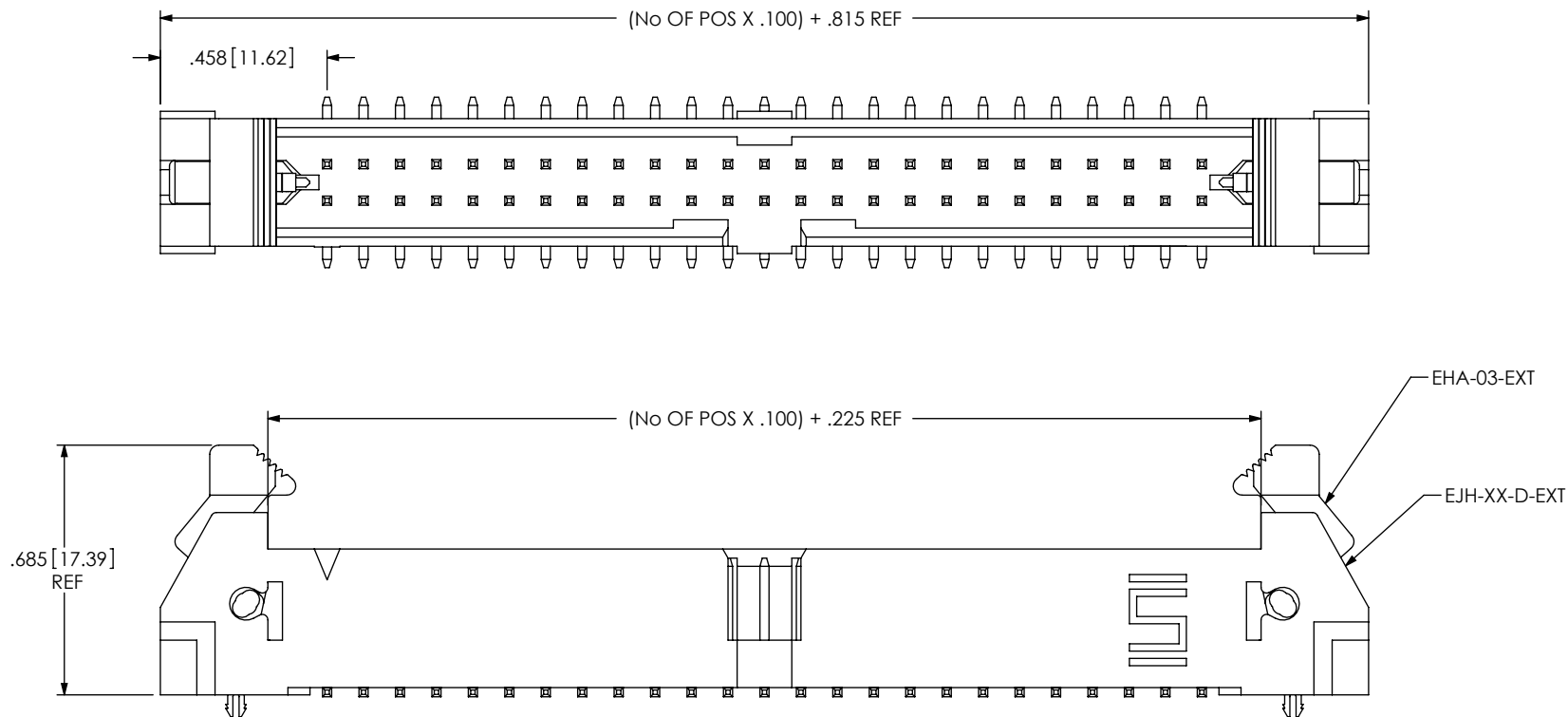
DWG. NO.

EJH-1XX-XX-XX-D-XX-XX-XX

BY: ERIC M. 09/19/01

SHEET 3 OF 4

FIG 11
-02 LEAD STYLE
 (SAME AS FIG 1, UNLESS OTHERWISE STATED)
 (EJH-125-02-X-D-SM-LC SHOWN)



PROPRIETARY NOTE

THIS DOCUMENT CONTAINS INFORMATION
 CONFIDENTIAL AND PROPRIETARY TO
 SAMTEC, INC. AND SHALL NOT BE REPRODUCED
 OR TRANSFERRED TO OTHER DOCUMENTS OR
 DISCLOSED TO OTHERS OR USED FOR ANY
 PURPOSE OTHER THAN THAT WHICH IT WAS
 OBTAINED WITHOUT THE EXPRESSED WRITTEN
 CONSENT OF SAMTEC, INC.

DO NOT SCALE DRAWING

SHEET SCALE: 2:1

samtec

520 PARK EAST BLVD, NEW ALBANY, IN 47150
 PHONE: 812-944-6733 FAX: 812-948-5047
 e-Mail: info@SAMTEC.com code: 55322

DESCRIPTION:
 .100 x .100 EJECTOR HEADER ASSEMBLY

DWG. NO.
EJH-1XX-XX-XX-D-XX-XX-XX

BY: ERIC M. 09/19/01 SHEET 4 OF 4