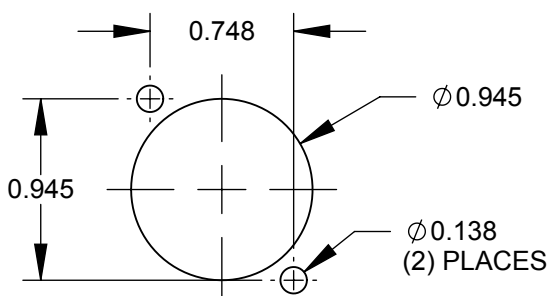
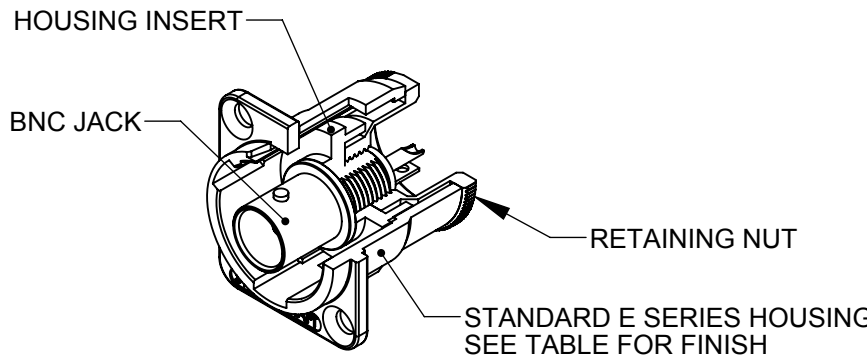
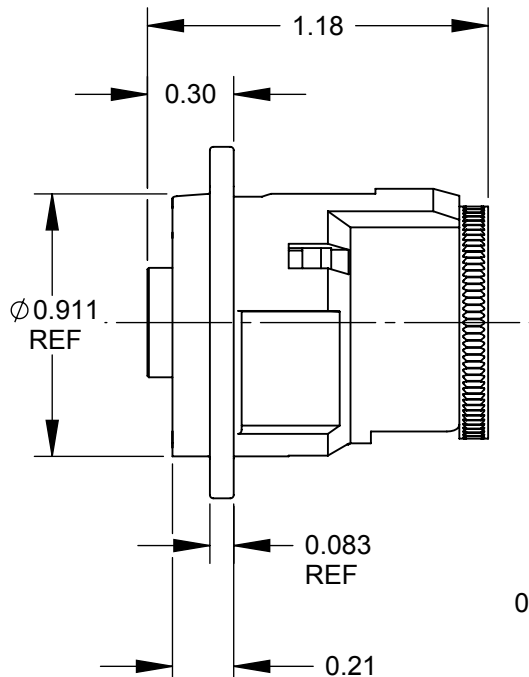


✓ $\varnothing 0.138$ THRU
 $\varnothing 0.230 \times 82^\circ$
 (2) PLACES REF



RECOMMENDED
 PANEL CUT-OUT

NOTES:

1. MATERIALS:
 HOUSING - ZINC ALLOY
 HOUSING INSERT - THERMOPLASTIC, BLACK
 RETAINING NUT - COPPER ALLOY, NICKEL PLATED
 BNC JACK - COPPER ALLOY, NICKEL PLATED
2. THIS PRODUCT IS RoHS COMPLIANT.

PART NUMBER	HOUSING FINISH
EHBNCSC	NICKEL
EHBNCSCB	BLACK CHROME

CUSTOMER DRAWING

					<div>UNLESS OTHERWISE SPECIFIED</div> <div>1. ALL DIMENSIONS IN INCHES</div> <div>- TWO PLACE DECIMALS ±0.02</div> <div>- THREE PLACE DECIMALS ±0.005</div>	THIS DRAWING DESCRIBES A DESIGN CONSIDERED PROPRIETARY IN NATURE, DEVELOPED AND MANUFACTURED BY SWITCHCRAFT INC. AND IS RELEASED ON A CONFIDENTIAL BASIS FOR IDENTIFICATION PURPOSES ONLY.								
						SIZE	WIDTH		MULT	LBS/M	TEMPER			
						FINISH				MATERIAL				
						SPEC No.				SPEC No.				
D	26634	10/08/10	JEB	TJK		FIRST USED ON				SCALE 1.5:1		<div>Switchcraft®</div> <div>SHEET 1 OF 1</div>		
C	26415	7/17/09	RS	TJK		DATE DRAWN 9/25/02	BY MA	CHKD MA 10/31/03	APVD MA 10/31/03					
B	24827	10/12/04	JL	MA										
A	24626	1/27/04	JL	MA										
REV	ECO NUMBER	DATE	BY	APVD					NAME		PART No.	REV		
REVISIONS					DO NOT SCALE DRAWING				E SERIES CONNECTOR, BNC, SOLDER TERMINATION, RoHS			EHBNCSC SERIES		D

D	26634	10/08/10	JEB	TJK
C	26415	7/17/09	RS	TJK
B	24827	10/12/04	JL	MA
A	24626	1/27/04	JL	MA
REV	ECO NUMBER	DATE	BY	APVD
REVISIONS				

UNLESS OTHERWISE SPECIFIED

1. ALL DIMENSIONS IN INCHES

- TWO PLACE DECIMALS ± 0.02

- THREE PLACE DECIMALS ± 0.005

DO NOT SCALE DRAWING