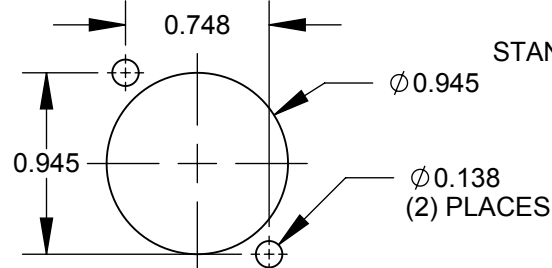


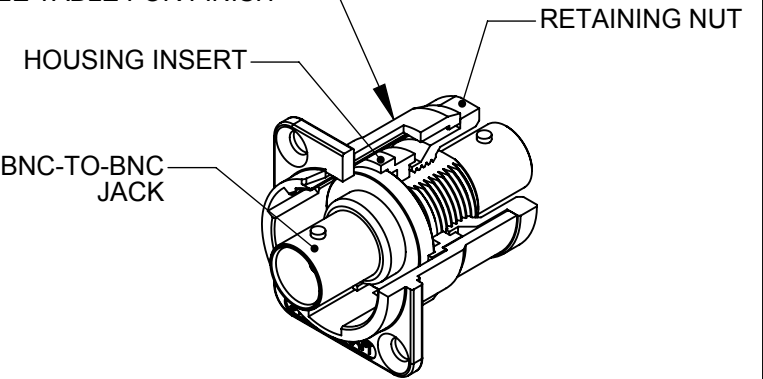
M3 x 0.5
METRIC THREAD
(2) PLACES

EHBNC2M3 & EHBNC2BM3

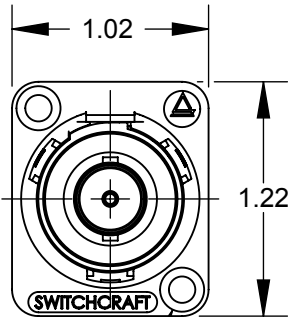


RECOMMENDED PANEL CUT-OUT

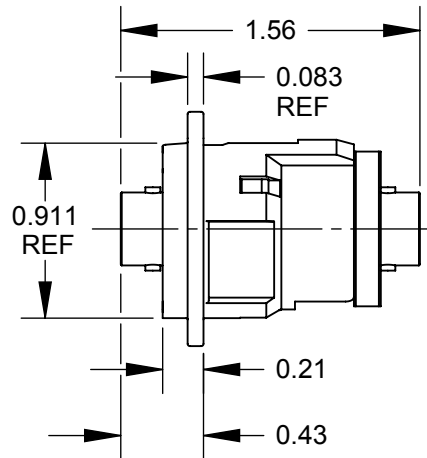
STANDARD E SERIES HOUSING
SEE TABLE FOR FINISH



EHBNC2 SHOWN



✓ $\varnothing 0.138$ THRU
 $\varnothing 0.230 \times 82^\circ$
(2) PLACES



NOTES:

1. MATERIALS:

HOUSING - ZINC ALLOY

HOUSING INSERT - THERMOPLASTIC, BLACK

RETAINING NUT - THERMOPLASTIC, BLACK

BNC JACK - COPPER ALLOY, NICKEL PLATED

2. THIS PRODUCT IS RoHS COMPLIANT.

PART NUMBER	HOUSING FINISH	MOUNTING HOLES
EHBNC2	NICKEL PLATED	COUNTERSINK FOR #4 FLAT HEAD SCREWS
EHBNC2B	BLACK CHROME	COUNTERSINK FOR #4 FLAT HEAD SCREWS
EHBNC2M3	NICKEL PLATED	M3 x 0.5 THREAD
EHBNC2BM3	BLACK CHROME	M3 x 0.5 THREAD

CUSTOMER DRAWING

					THIS DRAWING DESCRIBES A DESIGN CONSIDERED PROPRIETARY IN NATURE, DEVELOPED AND MANUFACTURED BY SWITCHCRAFT INC. AND IS RELEASED ON A CONFIDENTIAL BASIS FOR IDENTIFICATION PURPOSES ONLY.				
					SIZE	WIDTH	MULT	LBS/M	TEMPER
					FINISH			MATERIAL	
					SPEC No.			SPEC No.	
					FIRST USED ON		SCALE		Switchcraft®
					DATE DRAWN	BY	CHKD	APVD	
					5/5/03	MA	MA	MA	
							10/31/03	10/31/03	
					NAME E SERIES CONNECTOR, BNC FEEDTHROUGH, RoHS				PART No.
					EHBNC2 SERIES				REV
					C				
C	26415	7/17/09	RS	TJK					
REV	ECO NUMBER	DATE	BY	APVD					
REVISIONS									
					DO NOT SCALE DRAWING				

SolidWorks CAD File

