

DRAWING FOR REFERENCE: This is subject to change without notice
08/11/2012

TO
PCK

A

B

C

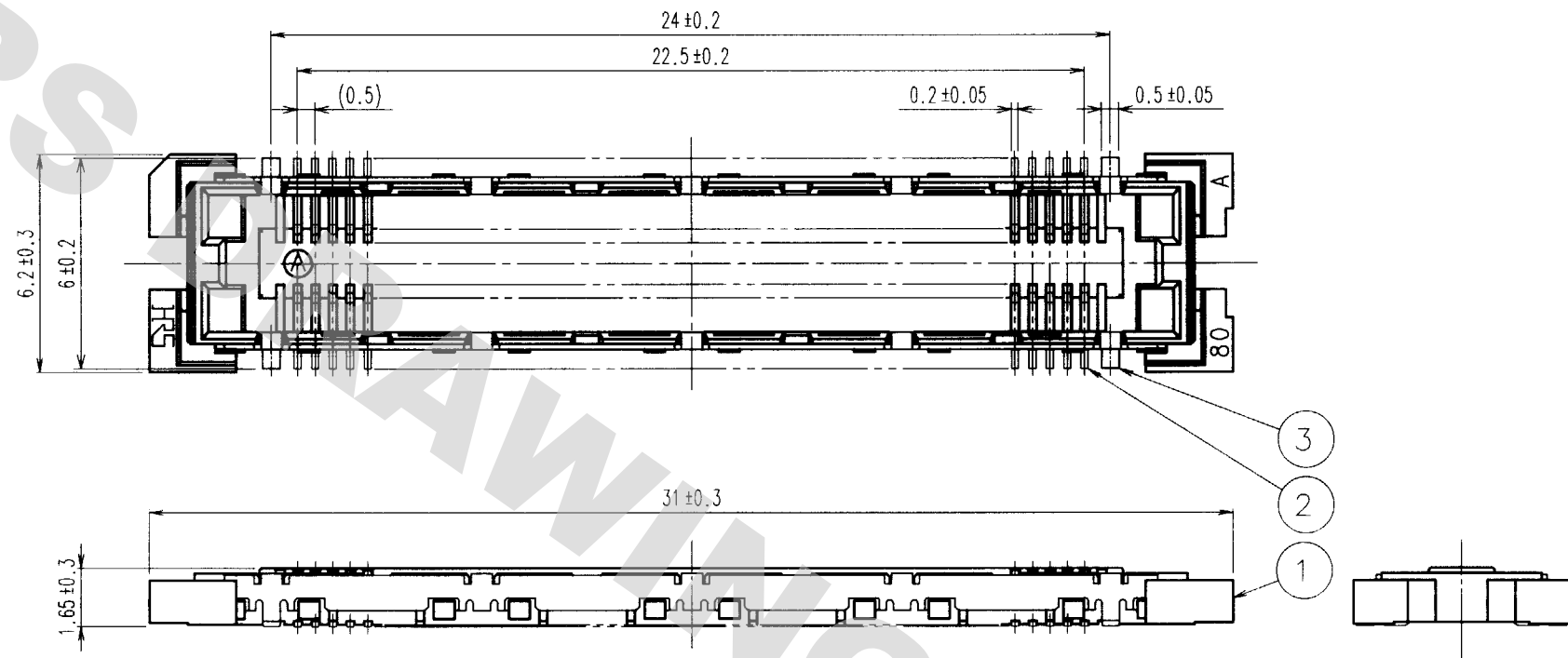
D

E

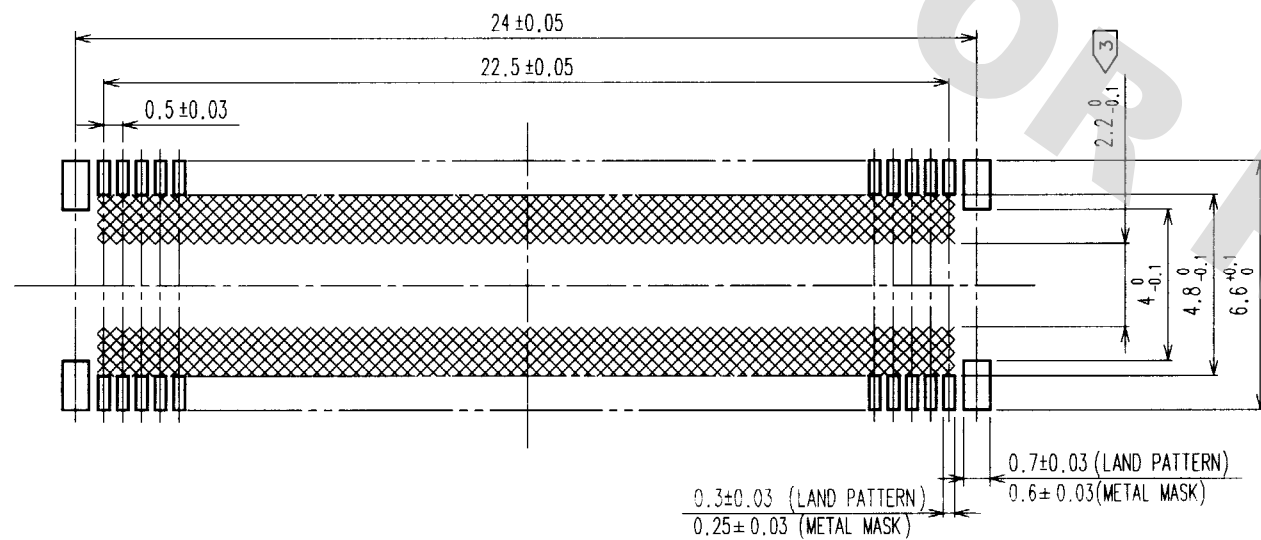
F

1 2 3 4 5 6 7 8

COUNT	DESCRIPTION OF REVISIONS	BY	CHKD	DATE	COUNT	DESCRIPTION OF REVISIONS	BY	CHKD	DATE
△				. . .	△				. . .
△				. . .	△				. . .
△				. . .	△				. . .



RECOMMENDED LAND PATTERN DIMENSION OF PCB



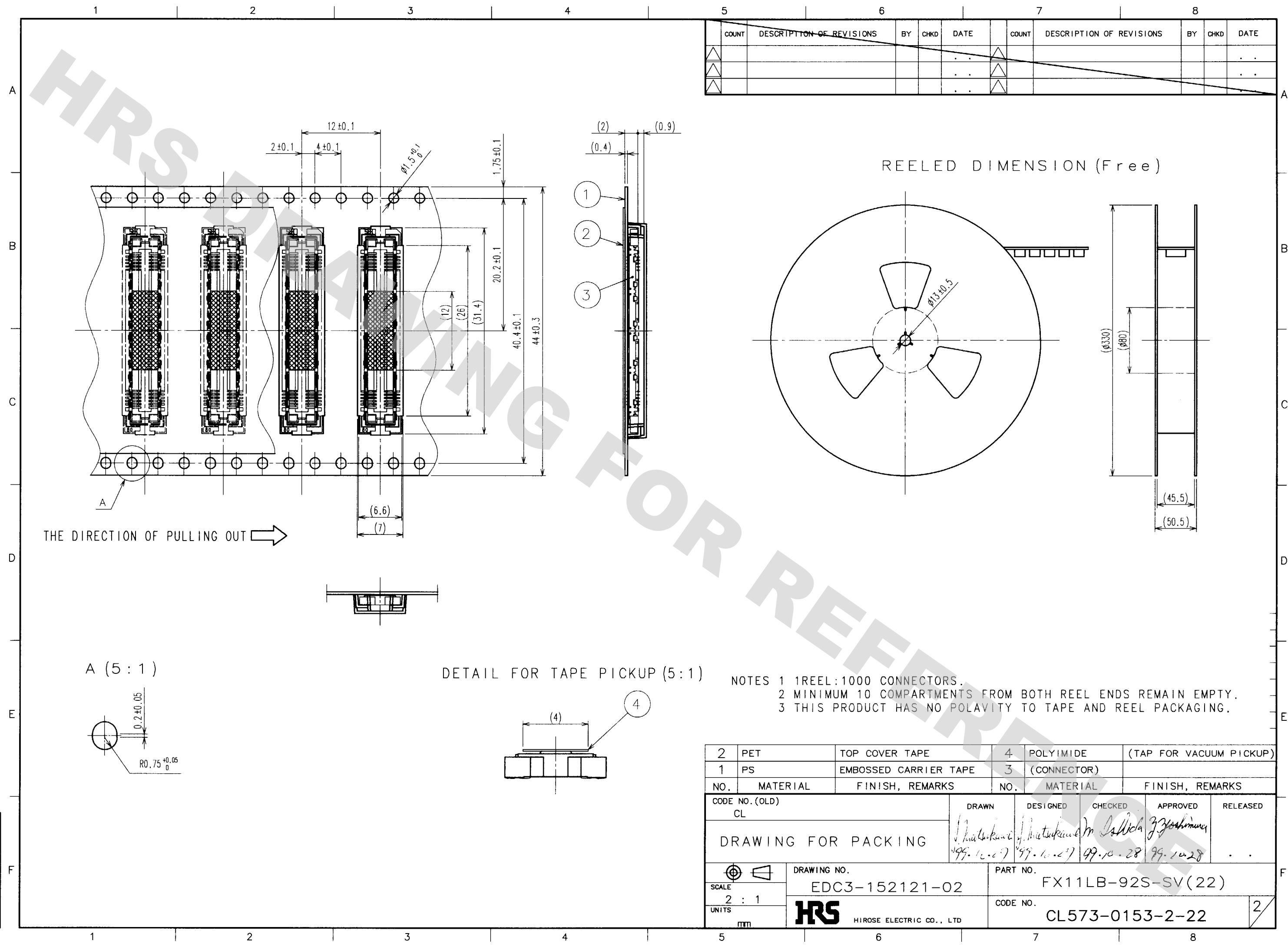
- NOTES
- SMT LEAD-COPLANARITY:0.1 MAX.
 - THIS PRODUCT HAS NO POLARITY TO PATTERN FOR MOUNTING.
 - MAKE SURE WIDTH OF PATTERN IS WITHIN THAT OF LAND ,OR LEAD MAY TOUCH PATTERN. (THIS APPLIES TO HATCHED AREA.)
 - TO BE EMBOSSED CARRIER TAPED AS SPECIFIED IN SHEET 2.

2	PHOSPHOR BRONZE	CONTACT AREA:GOLD (0.1μm) OVER NICKEL					
		LEAD:GOLD FLASH OVER NICKEL					
1	LCP	BEIGE UL94V-0	3	PHOSPHOR BRONZE	TIN PLATED		
NO.	MATERIAL	FINISH, REMARKS	NO.	MATERIAL	FINISH, REMARKS		
CODE NO. (OLD) CL		DRAWN	DESIGNED	CHECKED	APPROVED	RELEASED	
		99.10.27	99.10.27	99.10.28	99.10.28		
SCALE 5 : 1		DRAWING NO. EDC3-152121-02		PART NO. FX11LB-92S-SV (22)			
UNITS mm		HRS HIROSE ELECTRIC CO.,LTD.		CODE NO. CL573-0153-2-22		1/2	

1 2 3 4 5 6 7 8

DRAWING FOR REFERENCE: This is subject to change without notice
08/11/2012

TO
PCK



COUNT	DESCRIPTION OF REVISIONS	BY	CHKD	DATE	COUNT	DESCRIPTION OF REVISIONS	BY	CHKD	DATE

DETAIL FOR TAPE PICKUP (5:1)

- NOTES 1 1 REEL: 1000 CONNECTORS.
2 MINIMUM 10 COMPARTMENTS FROM BOTH REEL ENDS REMAIN EMPTY.
3 THIS PRODUCT HAS NO POLARITY TO TAPE AND REEL PACKAGING.

2	PET	TOP COVER TAPE	4	POLYIMIDE	(TAP FOR VACUUM PICKUP)
1	PS	EMBOSSED CARRIER TAPE	3	(CONNECTOR)	
NO.	MATERIAL	FINISH, REMARKS	NO.	MATERIAL	FINISH, REMARKS
CODE NO. (OLD) CL			DRAWN	DESIGNED	CHECKED
DRAWING FOR PACKING			<i>Matsukawa</i> 99.10.27	<i>Matsukawa</i> 99.10.27	<i>M. Ischida</i> 99.10.28
SCALE 2 : 1			PART NO. FX11LB-92S-SV(22)		
UNITS mm			CODE NO. CL573-0153-2-22		
HRS HIROSE ELECTRIC CO., LTD			2		