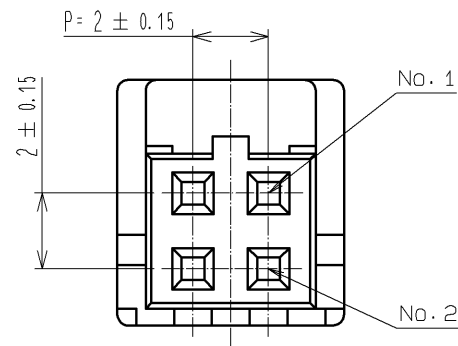
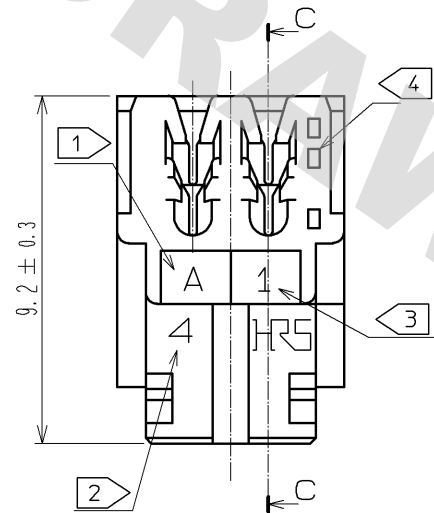
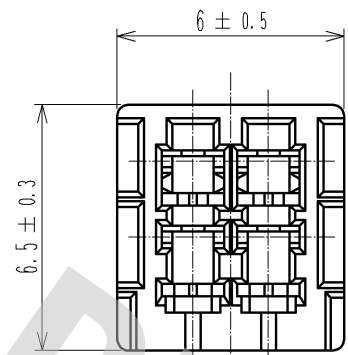
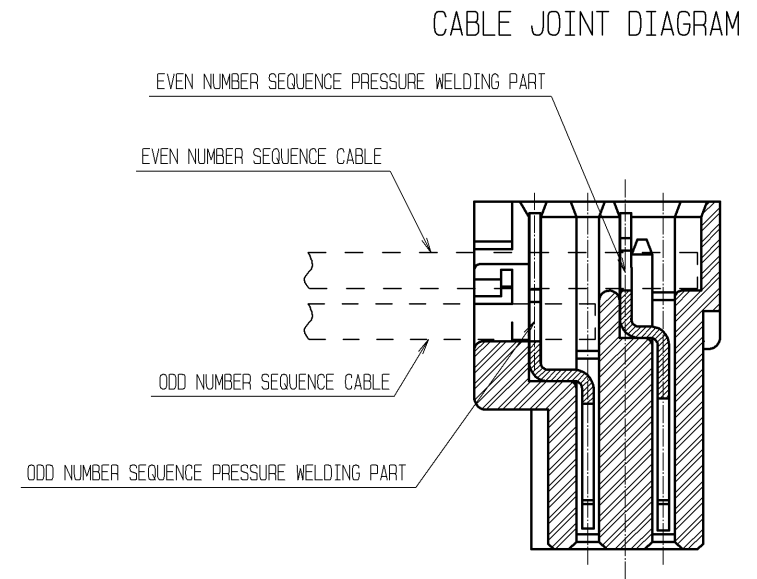
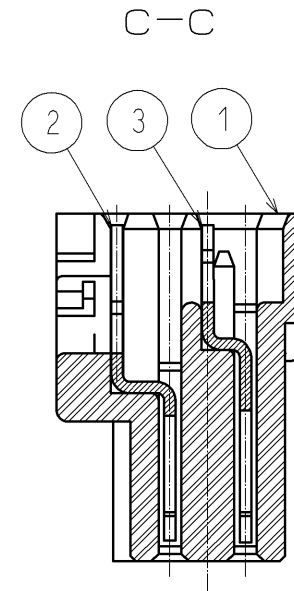


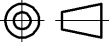


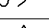
DRAWING FOR REFERENCE: This is subject to change without notice
08/11/2012



- NOTES
- 1 DIE CAVITY No.
 - 2 NUMBER OF CONTACT.
 - 3 AT CONTACT No. 1 SIDE.
 - 4 ONE SQUARE HOLE IN LOW ROW MEANS ODD NUMBER SIDE AND TWO SQUARER HOLES IN UPPER LOW EVEN NUMBER OF CONTACT No. RESPECTIVELY.

SUFFIX	WIRE	WIRE CONSTRUCTION	OUTER DIAMETER OF INSULATION
R26	UL1061 AWG26	7/0.16	0.95 TO 1.05



2	PHOSPHOR BRONZE	SURFACE:TIN PLATED 1μm min UNDER PLATING:NICKEL PLATED 0.5μm min		3	PHOSPHOR BRONZE	SURFACE:TIN PLATED 1μm min UNDER PLATING:NICKEL PLATED 0.5μm min			
1	POLYAMIDE	UL94V-0, BLACK							
NO.	MATERIAL	FINISH , REMARKS		NO.	MATERIAL	FINISH , REMARKS			
UNITS mm		SCALE 5 : 1		COUNT	DESCRIPTION OF REVISIONS		DESIGNED	CHECKED	DATE
 HIROSE ELECTRIC CO., LTD.		APPROVED : TS. SAKATA		08.10.20	DRAWING NO. EDC3-084860-01				
		CHECKED : TS. KUMAZAWA		08.10.17	PART NO. DF11-4DS-2R26(05)				
		DESIGNED : KT. ISHII		08.10.16	CODE NO. CL543-0652-0-05				
		DRAWN : KT. ISHII		08.10.16	 1/1				