

FULLY SEALABLE SPUTNIK-R lens for SSC P5



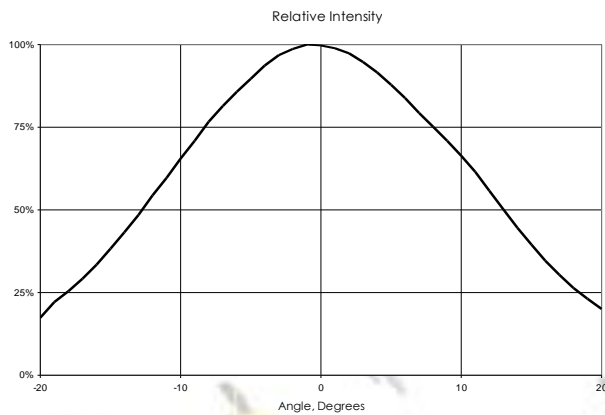
- Use with Seoul Semiconductor P5 series of high power RGB LEDs
- **Unique mixing of RGB colors inside the lens. Out comes a very homogeneous color.**
- Lens material optical grade PMMA with high UV and temperature resistance (105°C/220°F)
- Despite of the strong mixing of light, the lens has a high optical efficiency
- No lens holder. Fastening to heat sink with a PU foam adhesive tape of automotive grade
- We advise customer to ensure the suitability and sufficiency of the bond in the end product. For example, mechanical stress, vibration and holes on the surface of the circuit board weaken the strength of the tape.
- Please check fastening details from this link:
(http://www.ledil.com/datasheets/DataSheet_TAPE.pdf)
- Lens foot can be potted with resin without losing anything in optical efficiency (**fully sealed construction** possible)
- Diameter 26 mm (approximately 1")
- Easy build of a complete luminaire using SPUTNIK-R, P5 and heat sink
- Also possible to attach to P5 on the MCPCB offered by Seoul SC (F50381)
- Mechanical CAD models available upon request

LENS TYPES

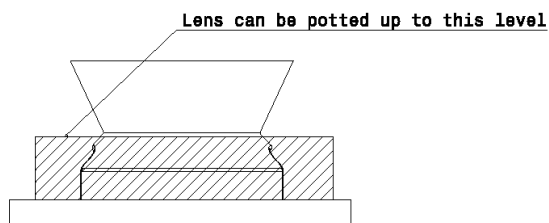
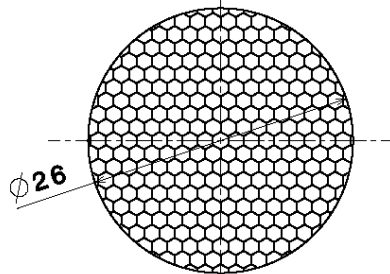
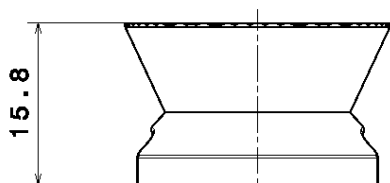
NAME	ORDERING CODE	FWHM Angle
Sputnik-R Medium	CA10298_Sputnik-R5	±13°

MEASUREMENT DATA

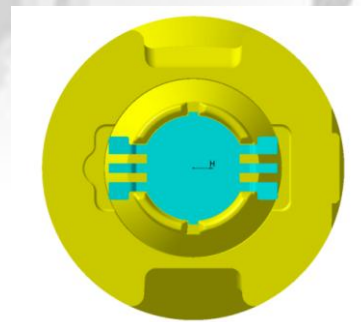
SPUTNIK-R



DIMENSIONS, POTTING & ASSEMBLY



Potting with appropriate resin



Position of P5 LED in the lens
Seen from underneath