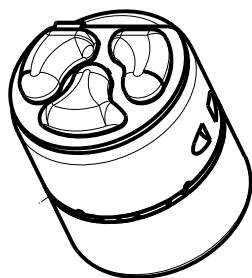
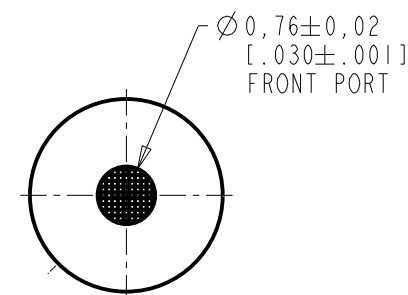
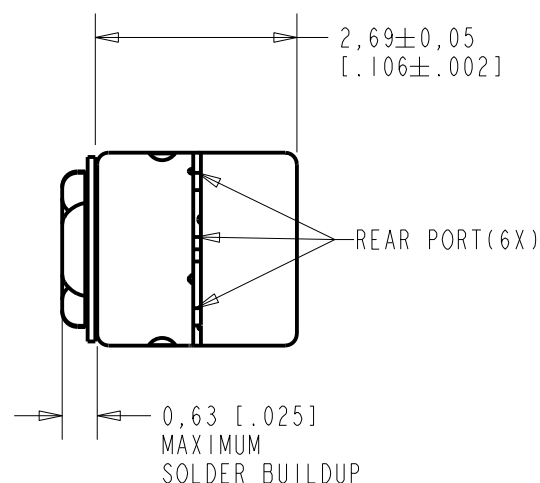
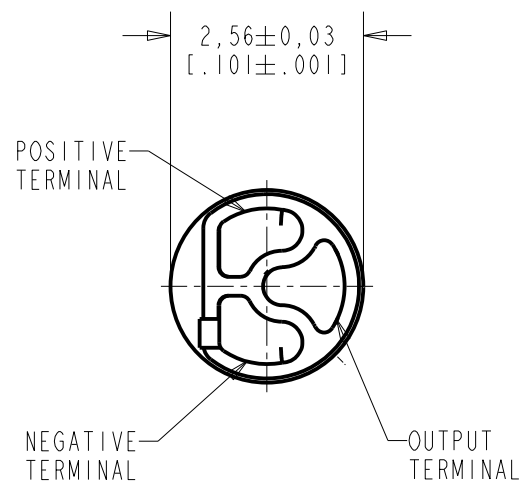


DFC-30445-000

SHT 1.1

NOTES:

1. INCREASED PRESSURE AT THE SOUND INLET CAUSES A POSITIVE GOING VOLTAGE TO APPEAR AT THE OUTPUT TERMINAL, RELATIVE TO THE NEGATIVE TERMINAL.



NOMINAL WEIGHT
0.004 GRAMS

DIMENSIONS IN MILLIMETERS [INCHES]

Revision	C.O. #	Implementation Date	RELEASE LEVEL	REVISION
B	MI0104099	6-22-11	Active	B
A	MI0103381	12-23-09		

SCALE: 10:1

DO NOT SCALE DRAWING

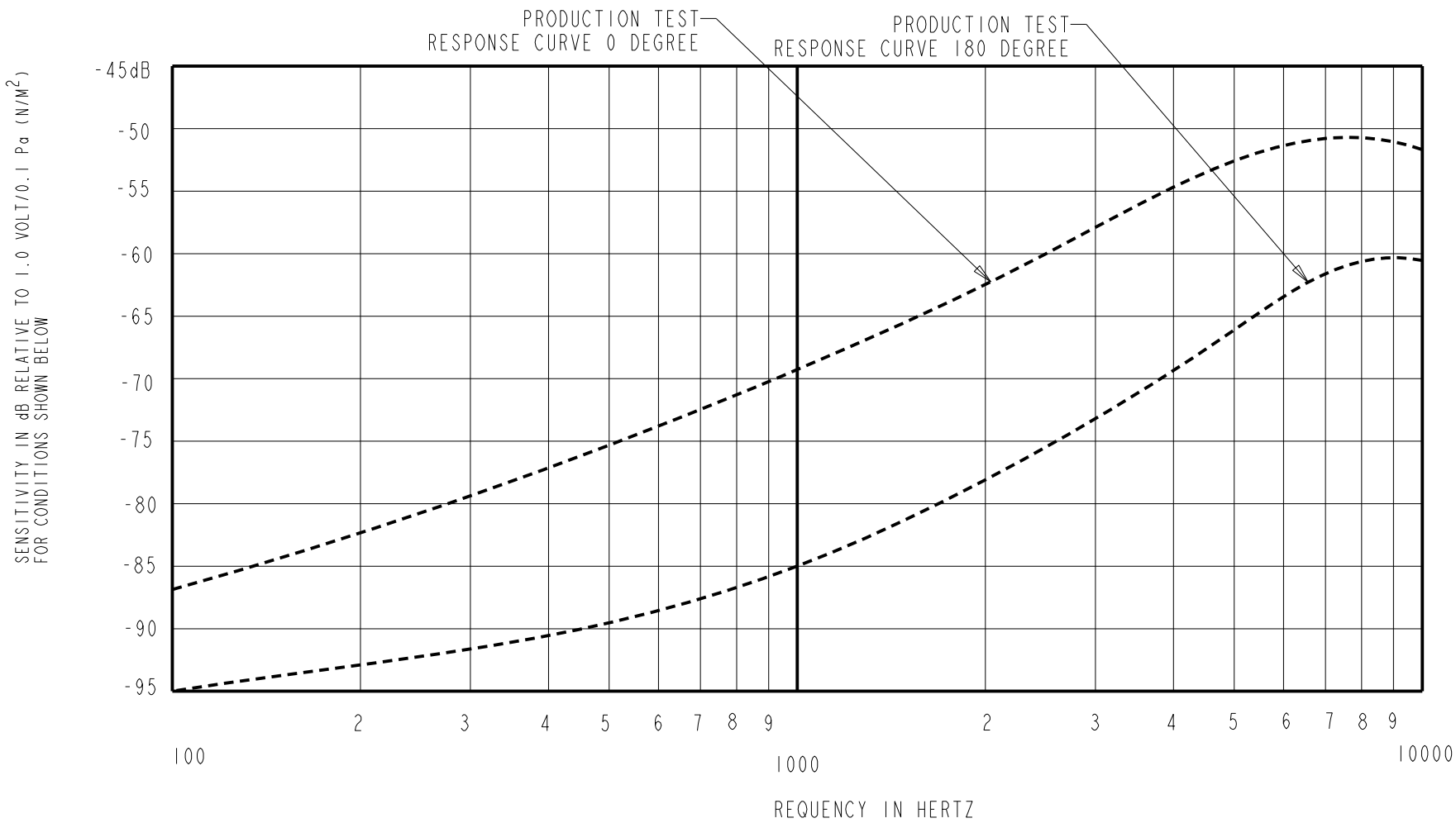
TITLE: MICROPHONE ASSEMBLY DFC-30445-000

OUTLINE DRAWING

SHT 1.1

DR. BY	DATE
LSY	12-23-09
CK. BY	DATE
GJP	1-7-10
APP. BY	DATE
GJP	1-7-10

KNOWLES ELECTRONICS
ITASCA, ILLINOIS U.S.A.

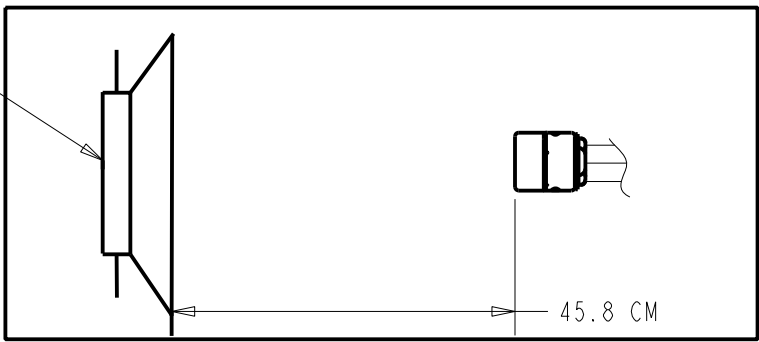


0 DEGREE SENSITIVITY				DEVICE CONFORMITY	
FREQUENCY	MIN.	NOM.	MAX.	RANGE OF DEVIATION FROM 1 kHz	
				0 DEGREE	
100	---	-86.0	---	-21.0	-13.0
1000	-73.0	-69.0	-65.0	0.0	0.0
5000	---	-53.0	---	+12.0	+20.0

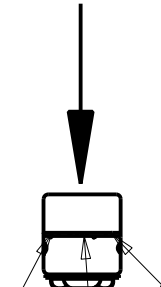
NOTES:

- MICROPHONE TO BE FUNCTIONAL WITH 3.0 VDC SUPPLY.
- SENSITIVITY VALUES INDICATED ON THIS SPECIFICATION ARE VALID AT 50% HUMIDITY.
- TEST EQUIPMENT AND FIXTURE:UNI TEST AND TA-1117-F
PLACE PRODUCT IN A CLOSED BOX, 45.8 CM AWAY FROM 94 dB SPL SWEPT SOUND FIELD
CREATED BY SPEAKER.

PIONEER TS-A6961E
6 INCH X 9 INCH SPEAKER



FRONT PORT(0°)

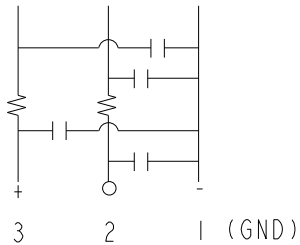


REAR PORT(180°)
6 OPENINGS

- FRONT TO BACK RATIO MIN. 12dB AT 1kHz.

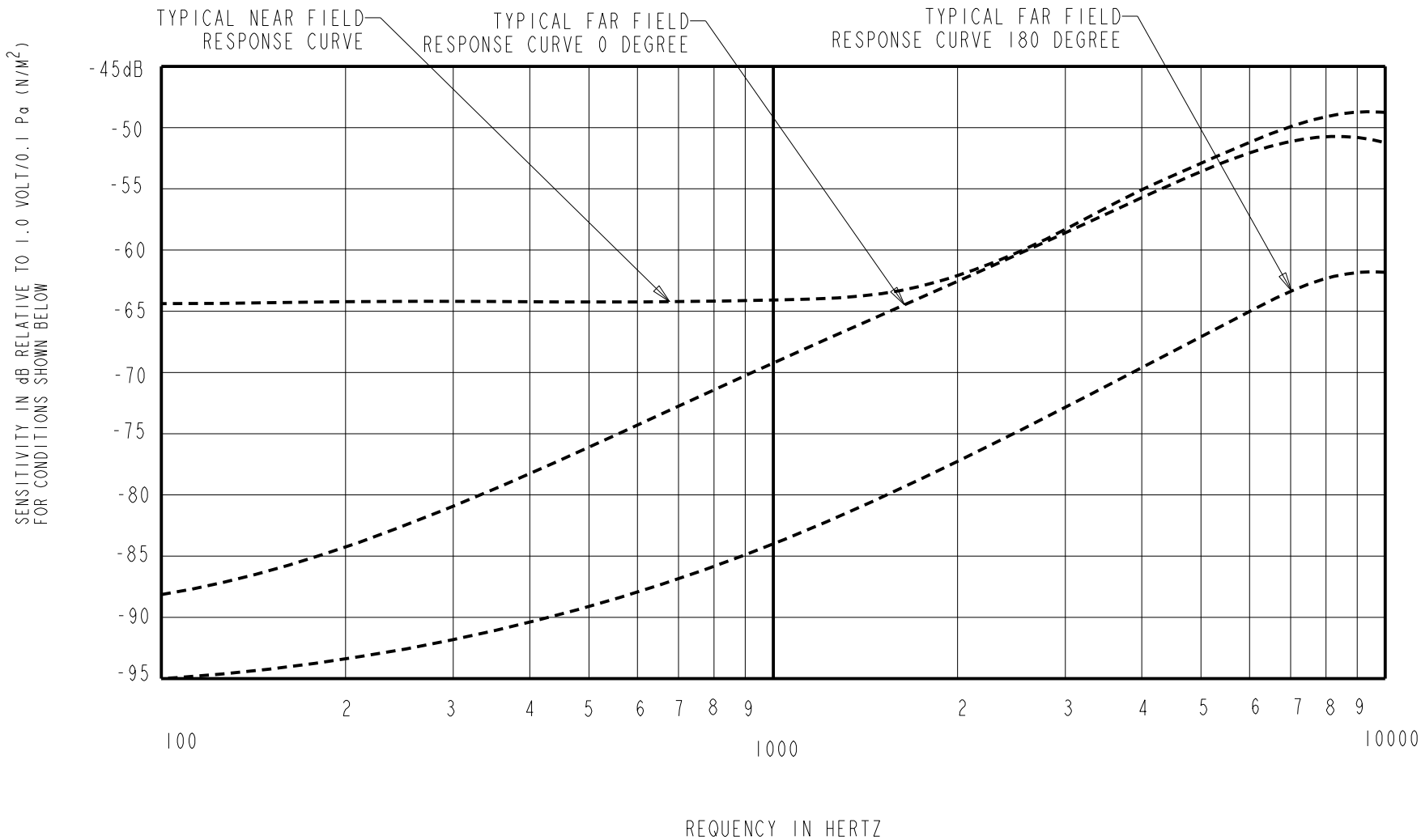
DC SUPPLY	AMPLIFIER CURRENT DRAIN	OUTPUT IMPEDANCE OHMS			"A" WEIGHTED NOISE	CAPACITANCE ±50%	
		MIN.	NOM.	MAX.		1-2	1-3
1.3V	50 μA MAX.	850	1700	2550	-93.0 dB MAX.	13pF	13pF

CAPACITANCE PROBE POINTS

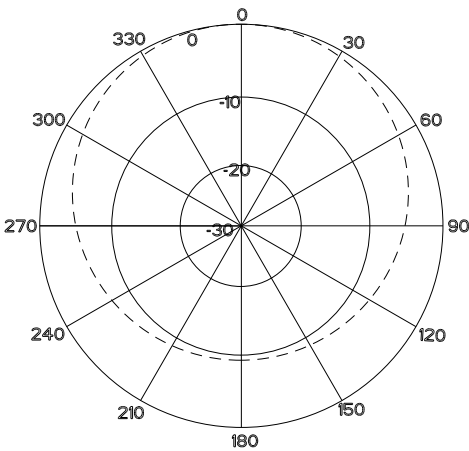


Revision	C.O. #	Implementation Date	RELEASE LEVEL		REVISION	
B	M10104099	6-22-11	Active		B	
A	M10103381	12-23-09				
WHEN TEST LIMITS ARE USED TO ESTABLISH INCOMING INSPECTION ACCEPTANCE/REJECTION CRITERIA, CORRELATION OF TEST EQUIPMENT WITH KNOWLES IS ALSO REQUIRED FOR ELIMINATION OF EQUIPMENT AND TEST METHOD VARIATION				DR. BY	DATE	
				LSY	12-23-09	
				CK. BY	DATE	
TITLE:	MICROPHONE ASSEMBLY		DFC-30445-000		GJP	1-7-10
					APP. BY	DATE
					GJP	1-7-10
PERFORMANCE SPECIFICATION		SHT 2.1				

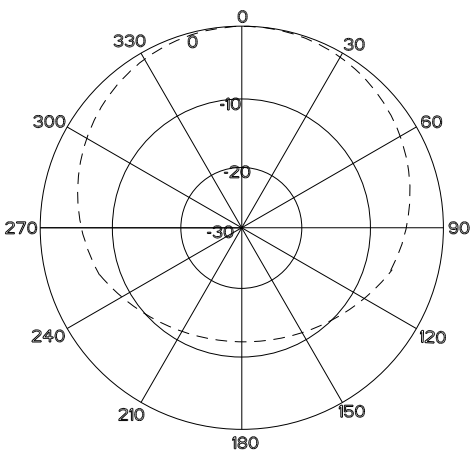
KNOWLES ELECTRONICS
ITASCA, ILLINOIS U.S.A.



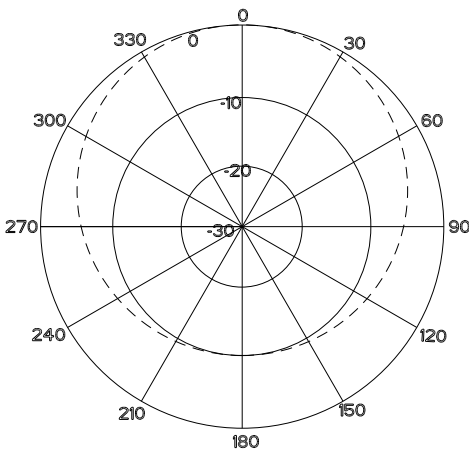
TYPICAL FREE-FIELD POLAR PATTERN AT 125Hz



TYPICAL FREE-FIELD POLAR PATTERN AT 1KHz

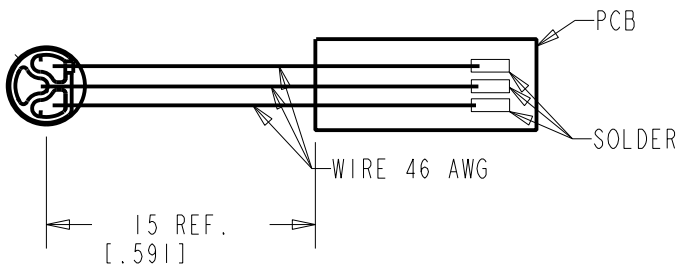


TYPICAL FREE-FIELD POLAR PATTERN AT 4KHz



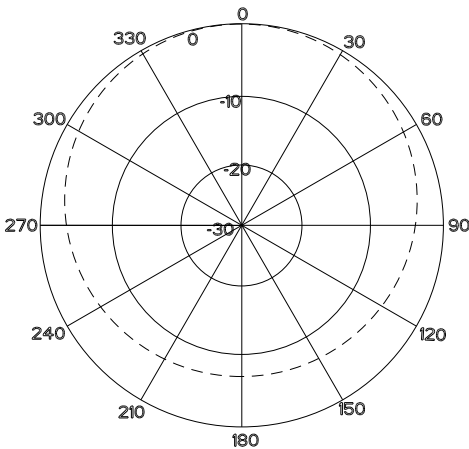
NOTES:

- MAX. SOUND PRESSURE LEVEL : 130dB
- MICROPHONE SUSPENDED ON 36 GAGE LITZ WIRE(AS SHOWN) IN ANECHOIC CHAMBER (NO FIXTURE), 1M FROM SPEAKER.



- NEAR FIELD TEST CONDITION:
MICROPHONE SUSPENDED CENTERED 6mm ABOVE APERTURE OF B&K TYPE 4227 MOUTH SIMULATOR.

TYPICAL FREE-FIELD POLAR PATTERN AT 10KHz



KNOWLES ELECTRONICS
ITASCA, ILLINOIS U.S.A.

Revision	C.O. #	Implementation Date	RELEASE LEVEL		REVISION
B	M10104099	6-22-11	Active		B
A	M10103381	12-23-09			
WHEN TEST LIMITS ARE USED TO ESTABLISH INCOMING INSPECTION ACCEPTANCE/REJECTION CRITERIA, CORRELATION OF TEST EQUIPMENT WITH KNOWLES IS ALSO REQUIRED FOR ELIMINATION OF EQUIPMENT AND TEST METHOD VARIATION			DR. BY	DATE	
TITLE: MICROPHONE ASSEMBLY PERFORMANCE SPECIFICATION			LSY	12-23-09	
			CK. BY	DATE	
			GJP	1-7-10	
			APP. BY	DATE	
			GJP	1-7-10	

DFC-30445-000
SHT 2.2