

## 1. INTRODUCTION

This instruction sheet illustrates the mounting patterns required for the Vita 67.1 and 67.2 daughter card and backplane R.F. modules. These R.F. modules are typically mounted to either a printed circuit board or metal cold plate. The following figures show the required mounting patterns for each type of R.F. module.

### NOTE

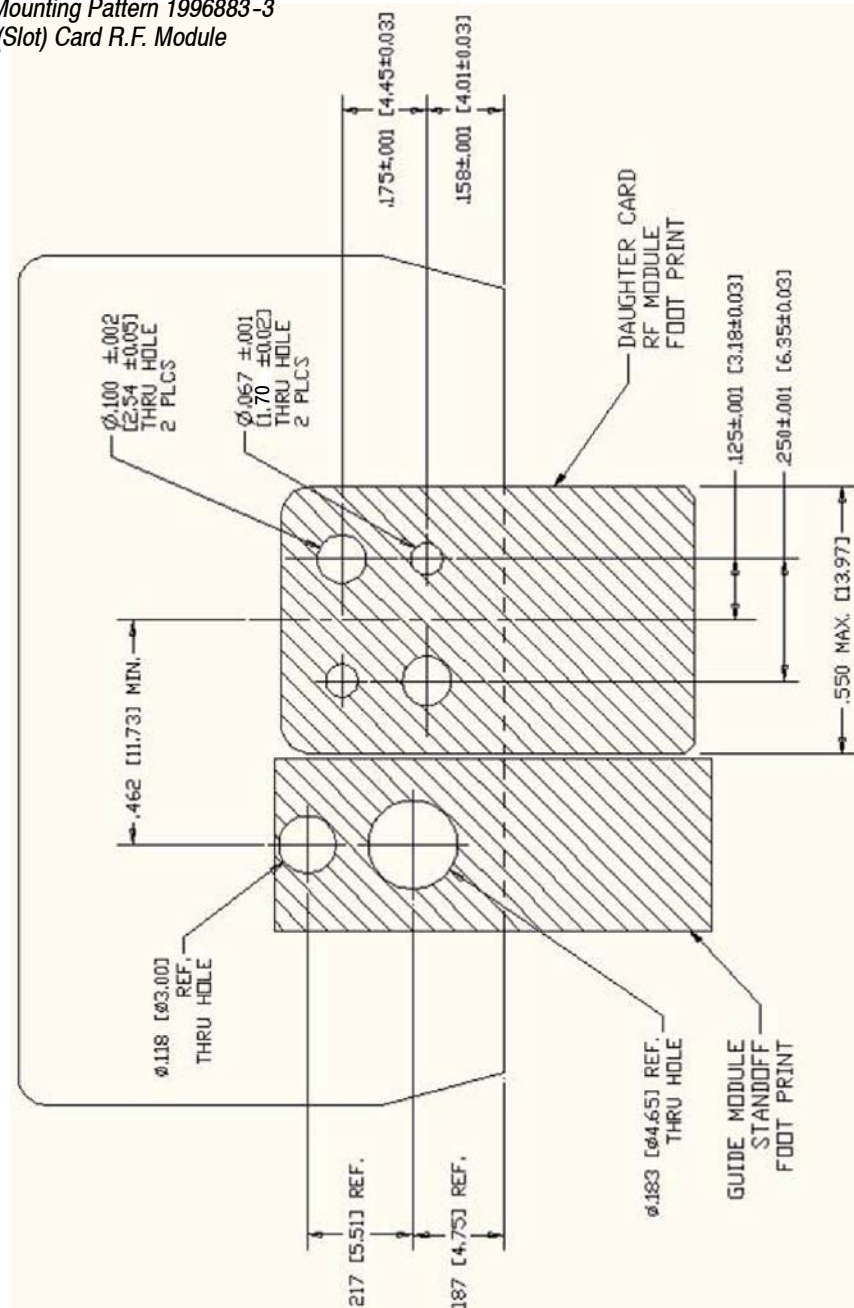


Dimensions provided in the following figures are inches first with [millimeters] in brackets.

## 2. REVISION SUMMARY

- Initial release of document

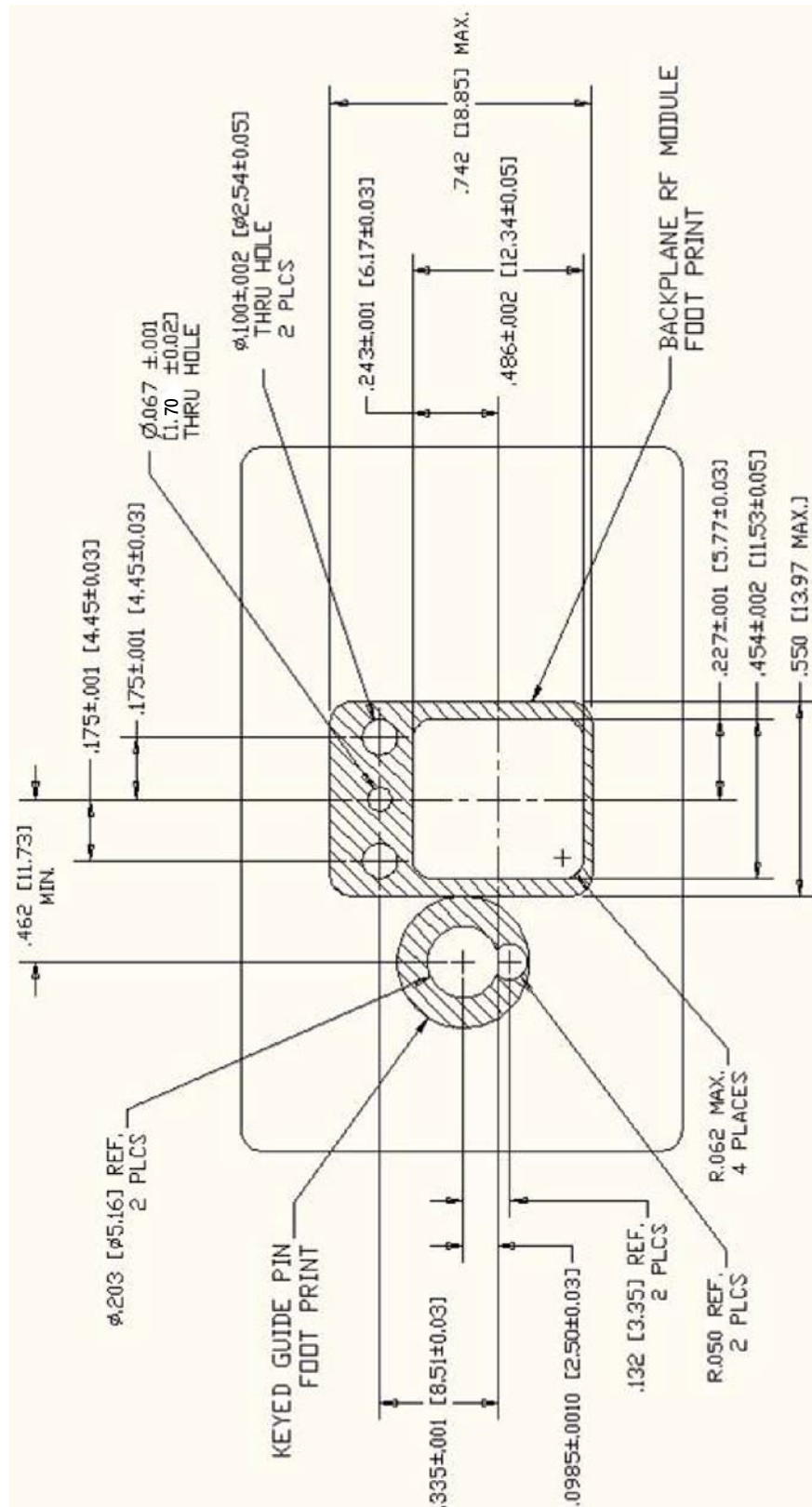
Vita 67.1 Connector Mounting Pattern 1996883-3  
4-Position Daughter (Slot) Card R.F. Module



Inches  
[Millimeters]

Figure 1

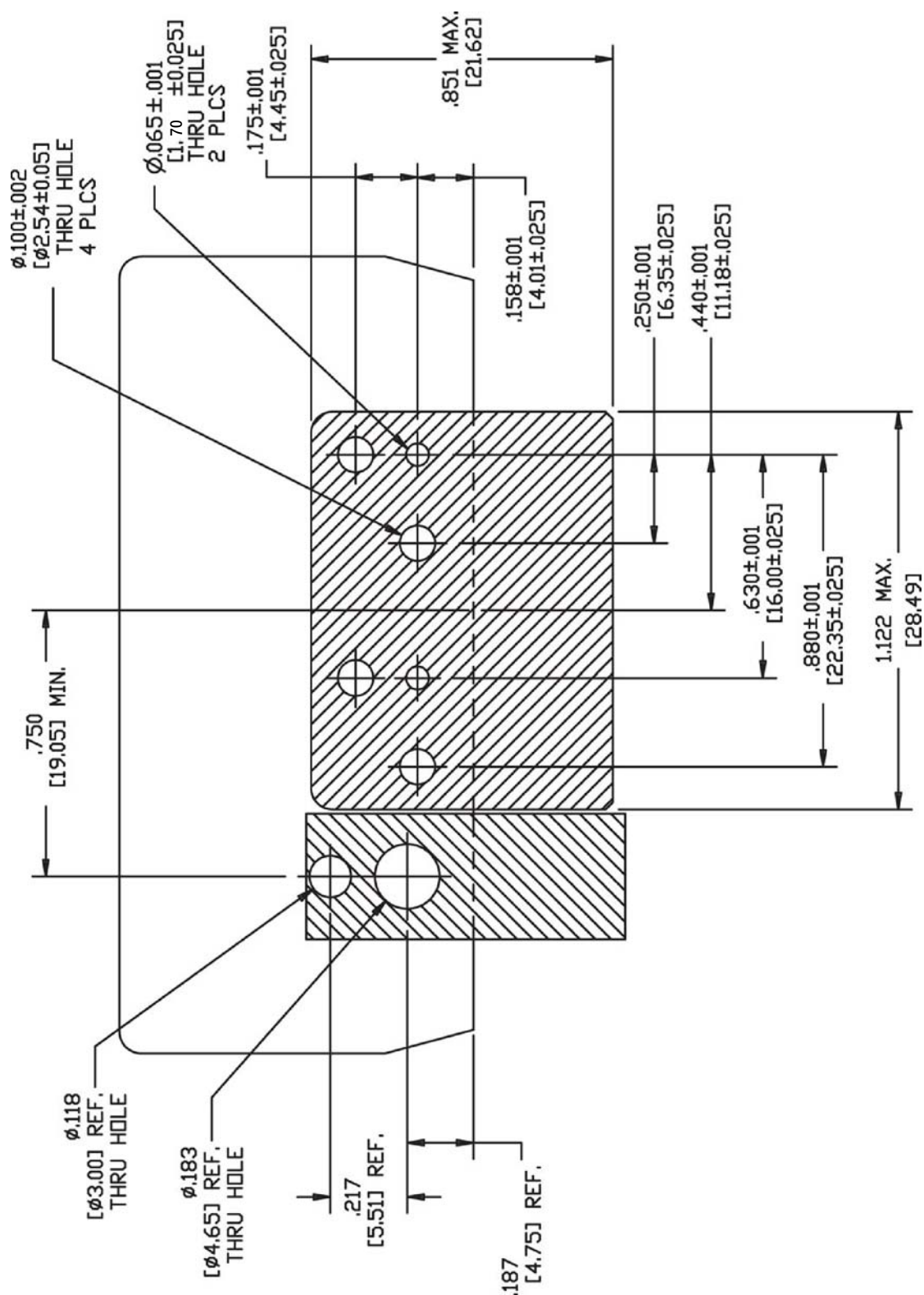
**Vita 67.1 Connector Mounting Pattern 1996884-1  
and 2101510-1, 4-Position Backplane R.F. Modules**



*Figure 2*

*Inches*  
*[Millimeters]*

Vita 67.2 Connector Mounting Pattern 1996705-3  
8-Position Daughter (Slot) Card R.F. Module



Inches  
[Millimeters]

Figure 3

Vita 67.2 Connector Mounting Pattern 1996706-1  
and 1996777-1, 8-Position Backplane R.F. Modules

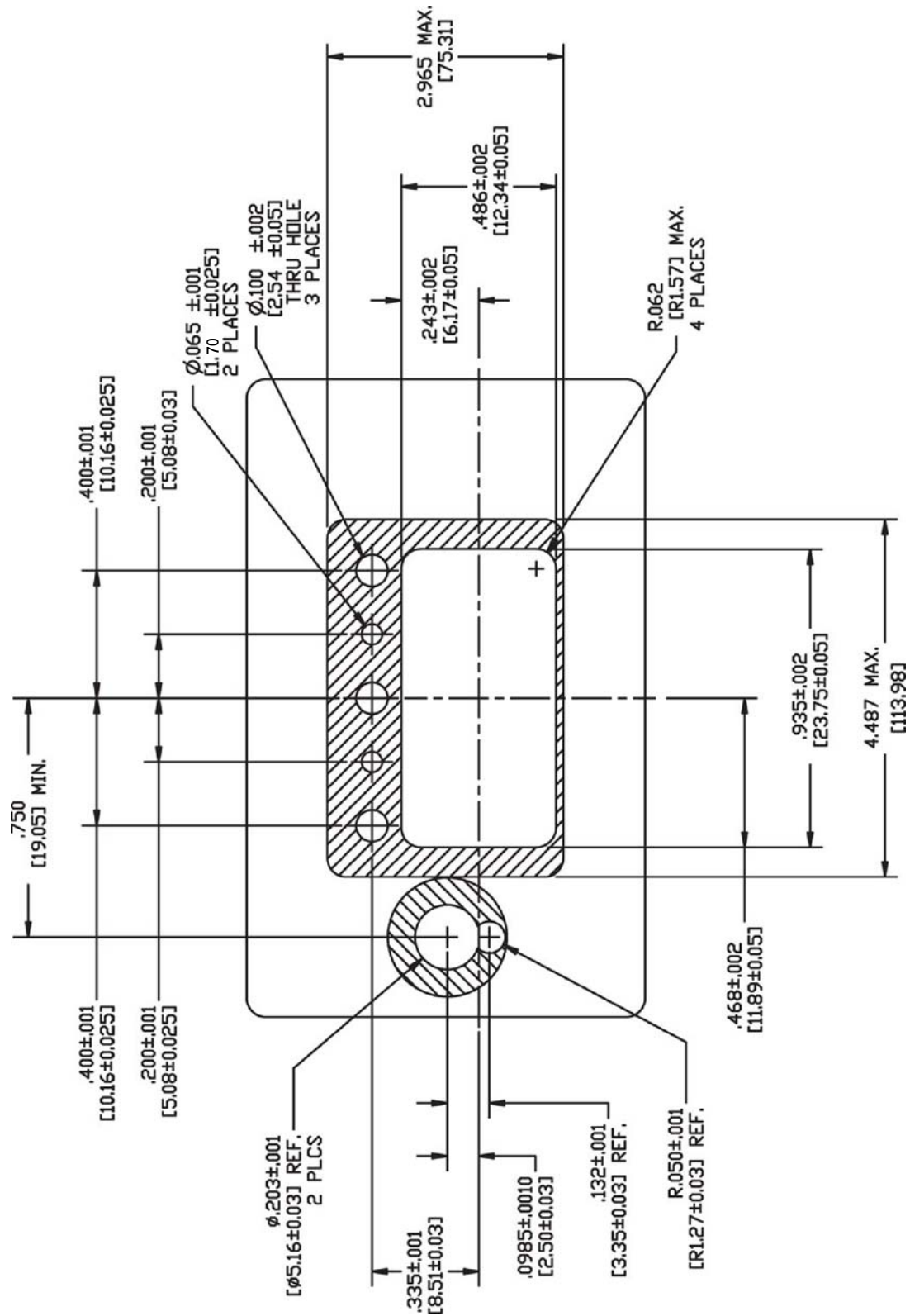


Figure 4

Inches  
[Millimeters]