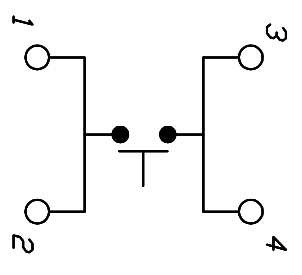
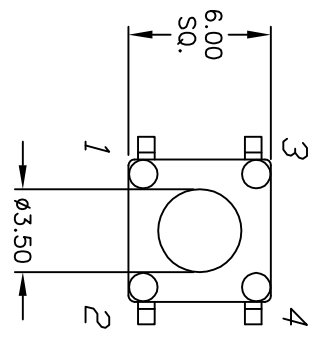
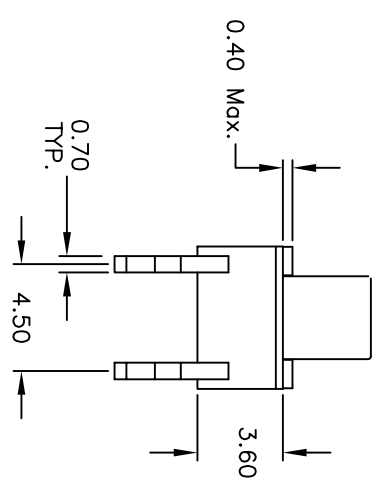
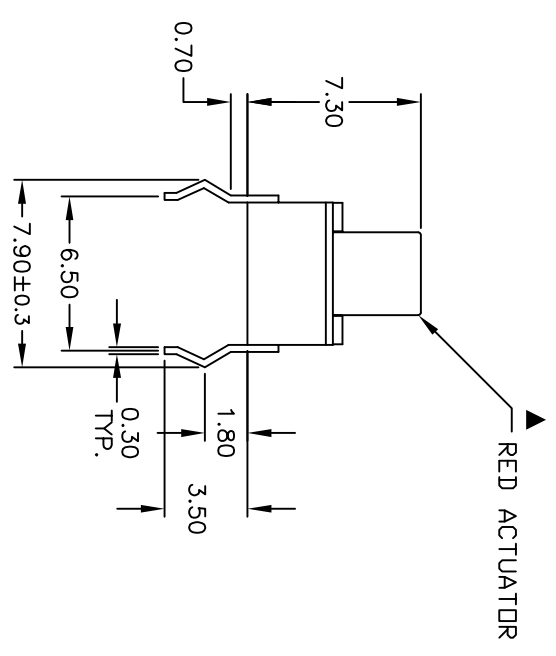


RECOMMENDED P.C.B. LAYOUT



CIRCUIT: SPST



- NOTES:
1. ALL DIMENSIONS IN MM
 2. GENERAL TOLERANCE: X.X=±0.4
X.XX=±0.25
 3. TERM. NOS. FOR REFERENCE ONLY.
 4. RATINGS: 12VDC, 50mA
 5. OPERATING FORCE: 250gf
 6. TRAVEL: 0.25±0.1mm
 7. CONTACT RESISTANC: 100Ω Max.

C	18176	Revised Drawing Title	7/8/08	RC
B	14313	CORRECT TITLE	9/15/04	AR
A	11501	RELEASED FOR PRODUCTION	5/18/01	CJB
REV.	ECN No.	DESCRIPTION	DATE	CHKD

TITLE		SCALE	DATE	DR	DWG	REV
TL1105EF250Q		3:1	5/18/01	CJB	D310016	C



THE INFORMATION CONTAINED IN THIS DOCUMENT IS PROPRIETARY TO E-SWITCH AND IS NOT TO BE COPIED OR TRANSFERRED