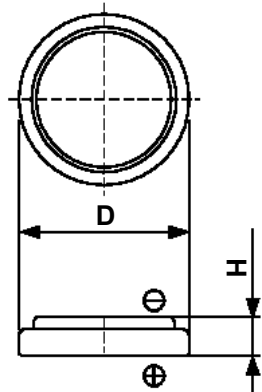


## Cell Type CR1220v Specifications

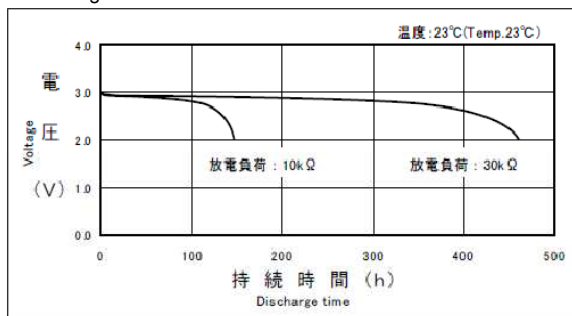


Nominal Voltage (V)	3	
Nominal Capacity (mAh)*1	40	
Standard Discharge Current (mA)	0.1	
Operating Temperature Range (°C)	-20 ~ +70	
Max. Dimensions (mm)	Diameter (D)	12.5
	Height (H)	2.0
Weight (g)	0.8	

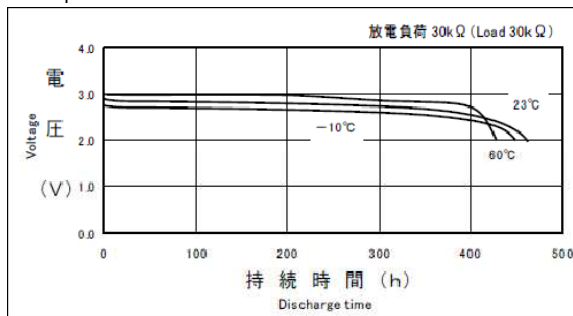
\*1 Nominal capacity is determined at an end voltage of 2.0V when the battery is allowed to discharge at a standard current level at +23°C.

### Typical Characteristics

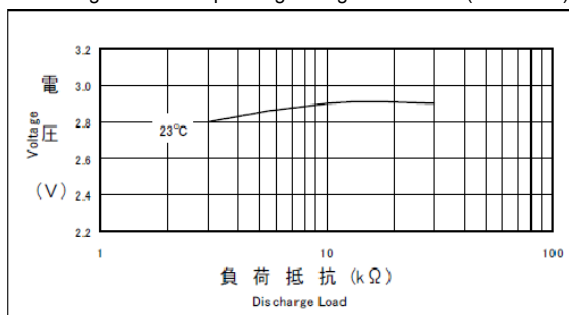
Discharge Characteristics of CR1220



Temperature Characteristics of CR1220



Discharge Load vs. Operating Voltage of CR1220 (DOD 40%)



Discharge Load vs. Discharge Capacity of CR1220

