

DO NOT
SCALE FROM
THIS PRINT

1. C REPRESENTS A CRITICAL DIMENSION
2. MINIMUM PUSHOUT FORCE: .5LB (8 OZ)
3. ONE POSITON WILL BE LOST FOR EVERY CUT MADE ON A SOCKET STRIP
4. TUBE PACKAGE POSITIONS 5-50 ONLY. POSITIONS 2-4 ARE TO BE LAYERED PACKAGED.
5. SHEAR TAILS TO DIMENSIONS SHOWN
6. PARTS TO BE SYMMETRICAL ABOUT C WITHIN ± 0.0015 [0.038].
7. ENDWALL AFTER CUTTING: $.0185$ [0.470] $\pm .0025$ [0.064]
8. VOID CORES MAY NOT BE PRESENT.
9. HAND FILL USE C-106-01-XX.

AUTOMATION USE C-106-22-XX. C-106-02-XX CAN BE SUBBED FOR C-106-22-XX.

10. MAX CUT FLASH: $.010$ [0.27] WITH NO FLASH ALLOWED IN HOLES OR EXTENDING BELOW LEADS.
11. MAX BURR: $.005$ [0.13].

No OF POSITIONS PER ROW
-02 THRU -50

LEAD STYLE SPEC
-02: SURFACE MOUNT
(USE C-106-X2-XXX)
(SEE NOTE 9)

CLP-1XX-XX-XXX-D-XX

OPTION

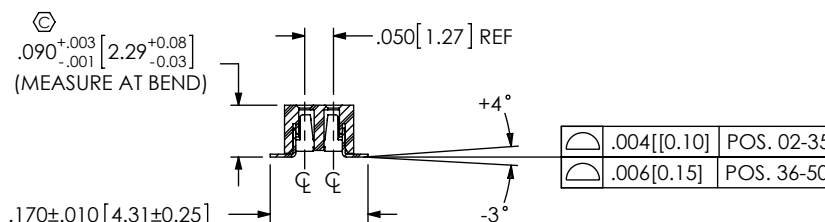
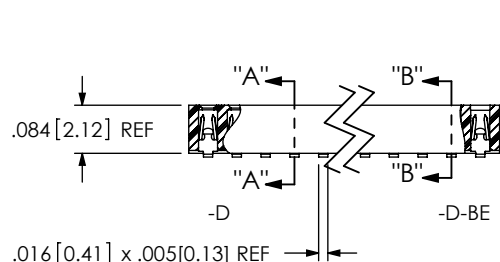
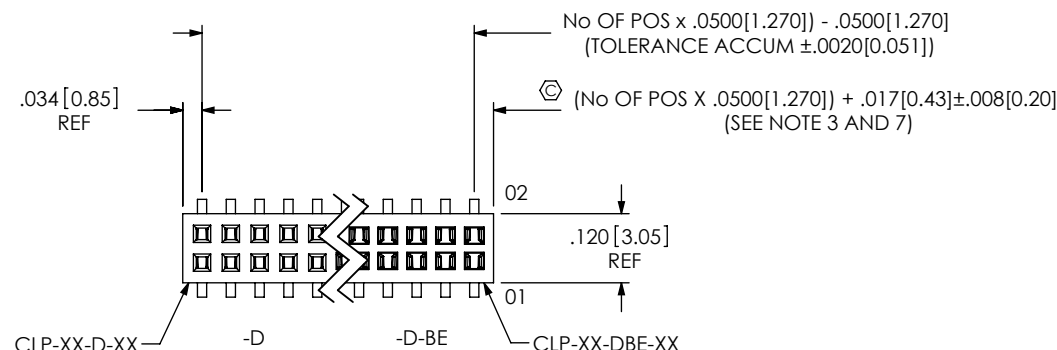
- P: PICK & PLACE PAD (USE LMP-01)
(AVAILABLE ON POSITON -05 THRU -50 ONLY)
(NOT AVAILABLE WITH -PA OR -K OPTIONS)
(SEE FIG 3, SHT 2)
- A: ALIGNMENT PIN (USE CLP-XX-D-XX)
(NOT AVAILABLE WITH -PA OPTION)
(SEE FIG 3, SHT 2)
- TR: TAPE AND REEL
- BE: BOTTOM ENTRY ONLY (USE CLP-XX-DBE-XX)
- PA: PICK & PLACE PAD WITH ALIGNMENT PINS
(NOT AVAILABLE WITH -P, -A, OR -K OPTIONS)
(SEE SHT 2, TABLE 3)
- K: POLYIMIDE FILM PAD (AVAILABLE ON -05 THRU -50 POSITIONS. USE K-DOT-.157-.250-.005, (SEE FIG 5, SHT 2)
(NOT AVAILABLE WITH -P OR -PA OPTIONS)

BODY SPEC

-D: DOUBLE ROW
(USE CLP-XX-D)

PLATING SPEC

- F: 3μ " FLASH SELECTIVE GOLD IN CONTACT AREA
MATTE TIN ON TAIL
- L: 10μ " LIGHT SELECTIVE GOLD IN CONTACT AREA
MATTE TIN ON TAIL
- S: 30μ " SELECTIVE GOLD IN CONTACT AREA
MATTE TIN ON TAIL
- G: 10μ " GOLD IN CONTACT AREA
 3μ ON TAIL
- H: 30μ " HEAVY GOLD IN CONTACT AREA
 3μ ON TAIL
- LM: 10μ " LIGHT SELECTIVE GOLD IN CONTACT AREA
MATTE TIN ON TAIL
- FM: 3μ " FLASH SELECTIVE GOLD IN CONTACT AREA
MATTE TIN ON TAIL
- SM: 30μ " SELECTIVE GOLD IN CONTACT AREA
MATTE TIN ON TAIL
- LTL: 10μ " LIGHT SELECTIVE GOLD IN CONTACT AREA
TIN/LEAD (90/10+/-5%) TAIL



SECTION "A"- "A"
(-D BODY: CLP-XX-D-XX)

SECTION "B"- "B"
(-D-BE BODY: CLP-XX-DBE-XX)
(DIFFERENT AS SHOWN,
OTHERWISE SAME AS -D BODY)

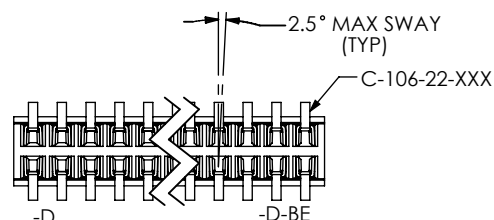
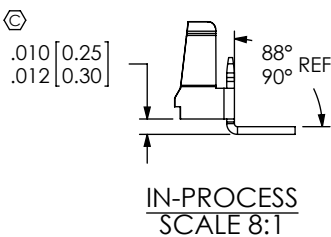


FIG 1

UNLESS OTHERWISE SPECIFIED,
DIMENSIONS ARE IN INCHES.
TOLERANCES ARE:
DECIMALS ANGLES
.XX: $\pm .01$ [.3] 2°
.XXX: $\pm .005$ [.13]
.XXXX: $\pm .0020$ [.051]

PROPRIETARY NOTE

THIS DOCUMENT CONTAINS INFORMATION
CONFIDENTIAL AND PROPRIETARY TO
SAMTEC, INC. AND SHALL NOT BE REPRODUCED
OR TRANSFERRED TO OTHER DOCUMENTS OR
DISCLOSED TO OTHERS OR USED FOR ANY
PURPOSE OTHER THAN THAT WHICH IT WAS
OBTAINED WITHOUT THE EXPRESSED WRITTEN
CONSENT OF SAMTEC, INC.

samtec

520 PARK EAST BLVD., NEW ALBANY, IN 47150
PHONE: 812-944-6733 FAX: 812-948-5047
e-Mail: info@SAMTEC.com code 55322

MATERIAL: DO NOT SCALE DRAWING SHEET SCALE: 3:1

INSULATOR: LCP, UL 94 VO, COLOR: BLACK
CONTACT: PHOS BRONZE

F:\DWG\MISC\MKTG\CLP-1XX-XX-XXX-D-XX-MKT.SLDDRW

DESCRIPTION:
LOW PROFILE .050 x .050 DOUBLE ROW ASM

DWG. NO. CLP-1XX-XX-XXX-D-XX

BY: PURVIS 01/31/1994 SHEET 1 OF 3

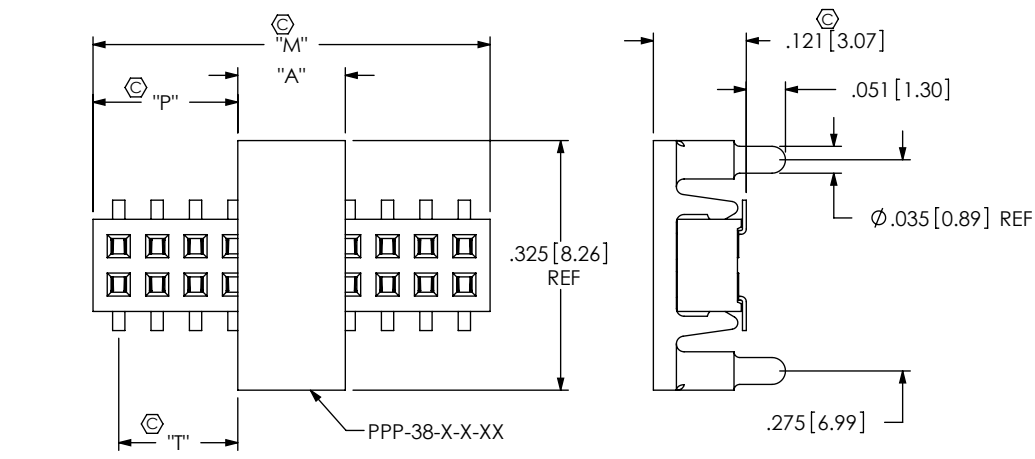
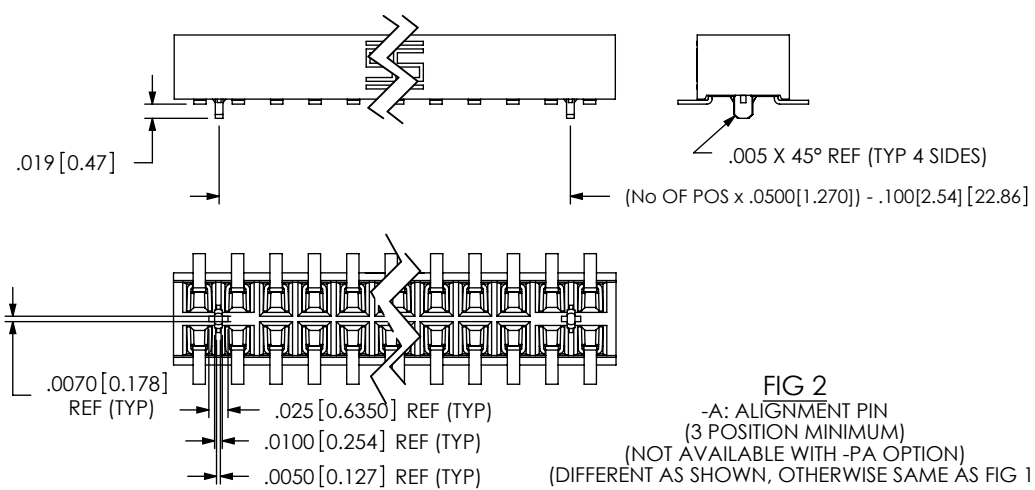
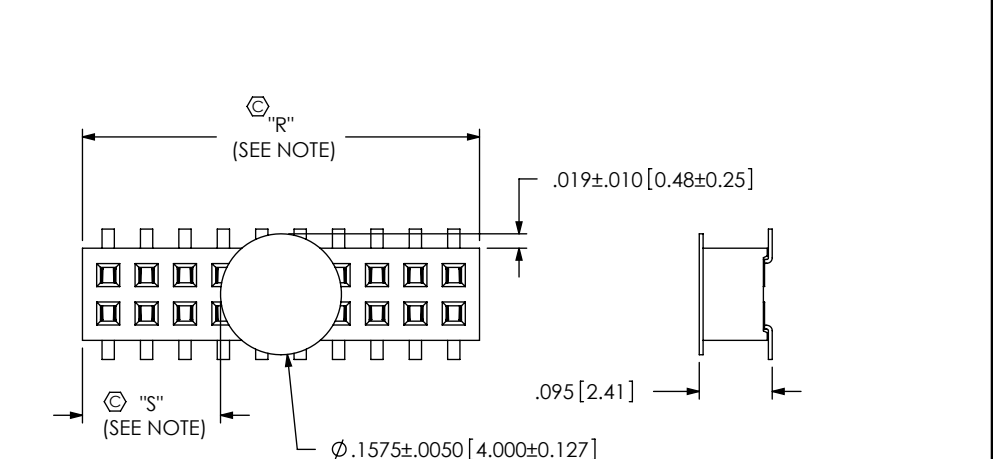
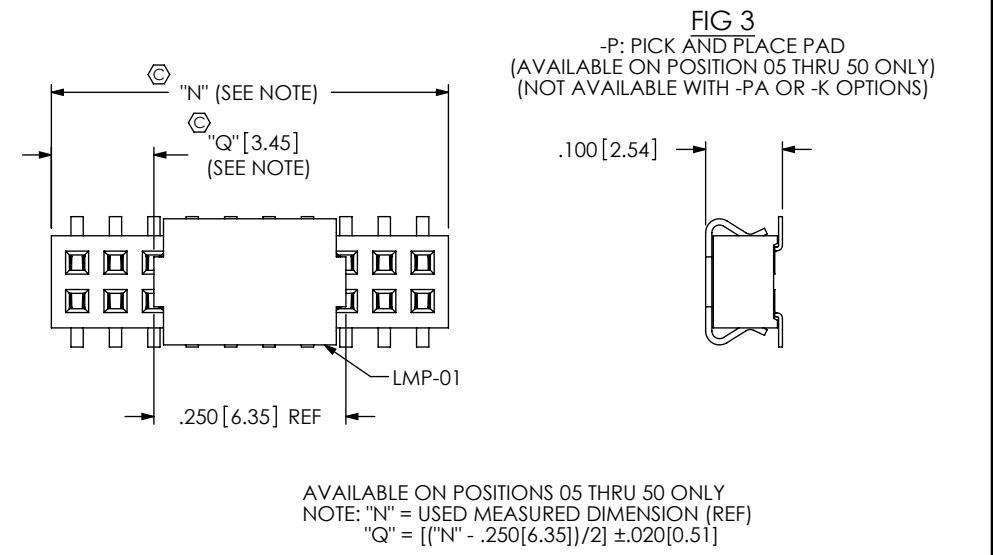


TABLE 1			
POS/ROW	"A"	"M"	"P"
4-15	.140 [3.56] REF	USED MEASURED DIMENSION (REF)	["M" - "A"]/2 ± .020 [0.51]
16-50	.280 [7.11] REF		

TABLE 3			
POS/ROW	PIN COUNT	PAD	"T"
4-15	ODD	PPP-38-O-4-15	(((No OF POS.-1)/2)x.050 [1.27])-.070 [1.78]
	EVEN	PPP-38-E-4-15	
16-50	ODD	PPP-38-O-16-50	(((No OF POS.-1)/2)x.050 [1.27])-.140 [3.56]
	EVEN	PPP-38-E-16-50	



PROPRIETARY NOTE

THIS DOCUMENT CONTAINS INFORMATION CONFIDENTIAL AND PROPRIETARY TO SAMTEC, INC. AND SHALL NOT BE REPRODUCED OR TRANSFERRED TO OTHER DOCUMENTS OR DISCLOSED TO OTHERS OR USED FOR ANY PURPOSE OTHER THAN THAT WHICH IT WAS OBTAINED WITHOUT THE EXPRESSED WRITTEN CONSENT OF SAMTEC, INC.

DO NOT SCALE DRAWING

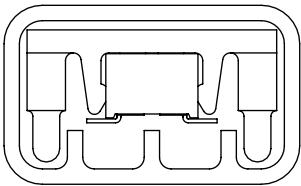
SHEET SCALE: 4:1

520 PARK EAST BLVD, NEW ALBANY, IN 47150
PHONE: 812-944-6733 FAX: 812-948-5047
e-Mail info@SAMTEC.com code 55322

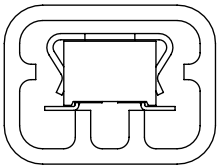
DESCRIPTION:
LOW PROFILE .050 x .050 DOUBLE ROW ASM
DWG. NO.
CLP-1XX-XX-XXX-D-XX

BY: PURVIS 01/31/1994 SHEET 2 OF 3

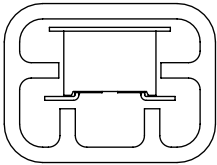
PACKAGING
(SEE NOTE 4, SHEET 1)



PT-CLP001-PA



PT-CLX-002-D



PT-CLX-001-D

TABLE 2		
OPTION	TUBE	PLUG
NONE, -A	PT-CLX001-D	TP-33
-P, -A-P	PT-CLX002-D	TP-33
-A-K, -K	PT-CLX001-D	TP-33
-PA	PT-CLP001-PA	TP-24-02

PROPRIETARY NOTE

THIS DOCUMENT CONTAINS INFORMATION
CONFIDENTIAL AND PROPRIETARY TO
SAMTEC, INC. AND SHALL NOT BE REPRODUCED
OR TRANSFERRED TO OTHER DOCUMENTS OR
DISCLOSED TO OTHERS OR USED FOR ANY
PURPOSE OTHER THAN THAT WHICH IT WAS
OBTAINED WITHOUT THE EXPRESSED WRITTEN
CONSENT OF SAMTEC, INC.

DO NOT SCALE DRAWING

SHEET SCALE: 4:1



520 PARK EAST BLVD, NEW ALBANY, IN 47150
PHONE: 812-944-6733 FAX: 812-948-5047
e-Mail info@SAMTEC.com code 55322

DESCRIPTION:
LOW PROFILE .050 x .050 DOUBLE ROW ASM

DWG. NO. CLP-1XX-XX-XXX-D-XX

BY: PURVIS 01/31/1994 SHEET 3 OF 3