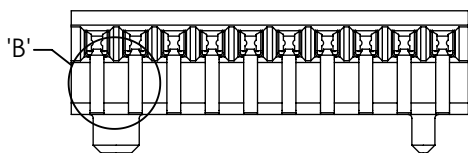
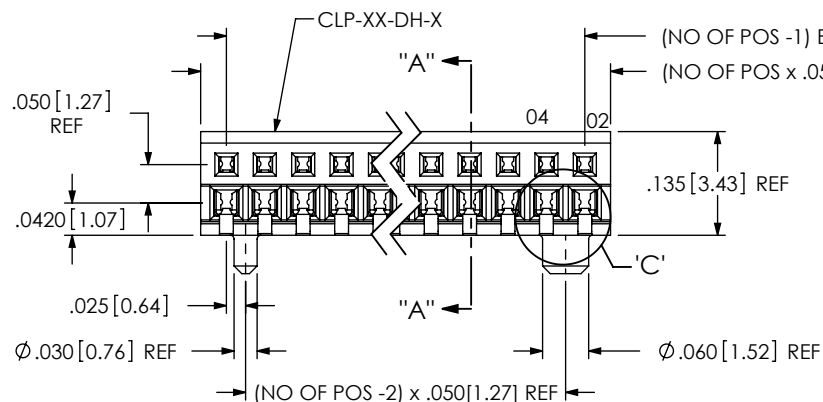
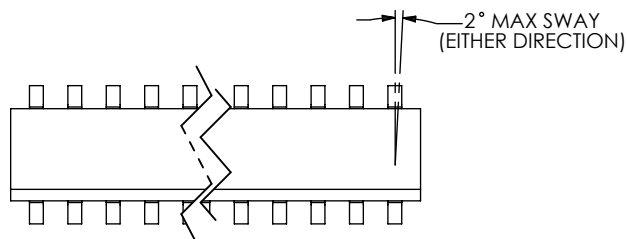
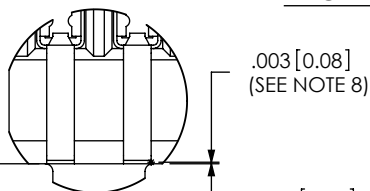


1. C REPRESENTS A CRITICAL DIMENSION.
2. ALL DIMENSION TO BE SYMMETRICAL ABOUT CENTERLINE WITHIN ± 0.02 [0.5] UNLESS OTHERWISE STATED.
3. POSITIONS -05 THRU -50 ARE TO BE PACKAGED IN TUBES.
4. MIN CONTACT RETENTION FORCE: 1LB.
5. TAILS TO ARE TO BE SHEARED. MAX BURR, ORIENTED AWAY FROM CUSTOMER'S P.C.B. ONLY, TO BE .0045 [114].
6. MAX CUT FLASH: .015 IN NON-CRITICAL AREAS; NO CUT FLASH TO BE PRESENT IN CRITICAL AREAS AS SHOWN
7. MOLD STEEL CAPABLE OF -02 & -03 POSITION (-A OPTION), BUT NOT ENG'G APPROVED.
8. FIRST AND LAST PIN OF EACH ROW TO BE FLUSH TO .003 [0.08] BELOW BODY.

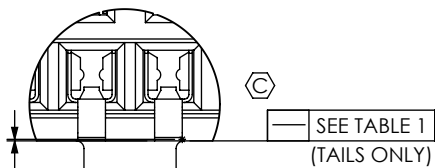
DO NOT
SCALE FROM
THIS PRINT



BACK VIEW



DETAIL 'B'
SCALE 8 : 1



DETAIL 'C'
SCALE 8 : 1

CLP-1XX-XX-X-DH-XX

No. OF POSITIONS PER ROW
-02 THRU -50

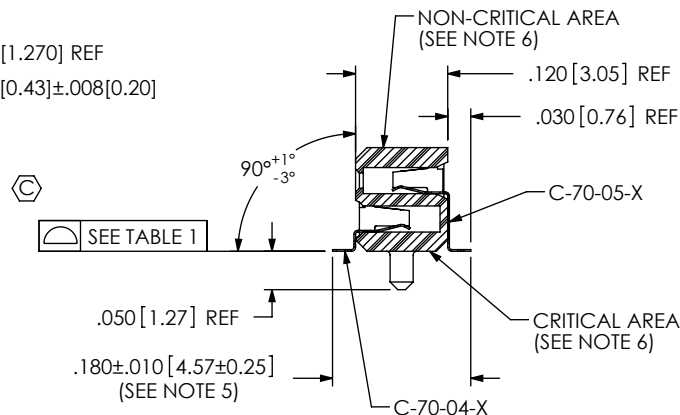
LEAD STYLE
-02: SURFACE MOUNT

PLATING

- F: 3μ" FLASH SELECTIVE GOLD IN CONTACT AREA, MATTE TIN ON TAIL
- L: 10μ" LIGHT SELECTIVE GOLD IN CONTACT AREA, MATTE TIN ON TAIL
- FM: 3μ" FLASH SELECTIVE GOLD IN CONTACT AREA, MATTE TIN ON TAIL
- LM: 10μ" LIGHT SELECTIVE GOLD IN CONTACT AREA, MATTE TIN ON TAIL

OPTION
-TR: TAPE AND REEL PACKAGING
-A: ALIGNMENT PIN (USE CLP-XX-DH-A BODIES MUST BE MODDED TO POSTION) (AVAILABLE ON POSITIONS -04 THRU -05) (SEE NOTE 7)

BODY SPECIFICATION
-DH: DOUBLE HORIZONTAL



SECTION "A"- "A"

TABLE 1

POSITION	COPLANARITY	STRAIGHTNESS
-02 THRU -40	.004 [0.10]	.004 [0.10]
-41 THRU -50	.006 [0.15]	.006 [0.15]

UNLESS OTHERWISE SPECIFIED,
DIMENSIONS ARE IN INCHES.

TOLERANCES ARE:

DECIMALS ANGLES
.XX: ± 0.01 [.3] 2°
.XXX: ± 0.005 [.13]
.XXXX: ± 0.0020 [.051]

PROPRIETARY NOTE

THIS DOCUMENT CONTAINS INFORMATION
CONFIDENTIAL AND PROPRIETARY TO
SAMTEC, INC. AND SHALL NOT BE REPRODUCED
OR TRANSFERRED TO OTHER DOCUMENTS OR
DISCLOSED TO OTHERS OR USED FOR ANY
PURPOSE OTHER THAN THAT WHICH IT WAS
OBTAINED WITHOUT THE EXPRESSED WRITTEN
CONSENT OF SAMTEC, INC.

samtec

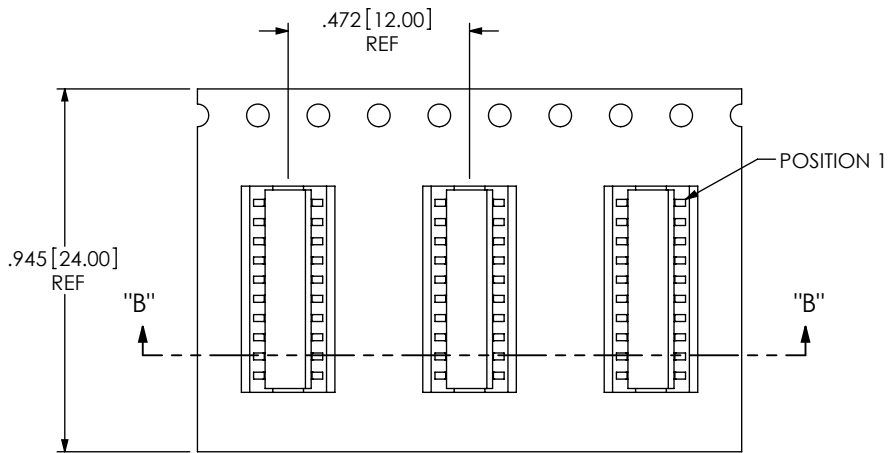
520 PARK EAST BLVD, NEW ALBANY, IN 47150
PHONE: 812-944-6733 FAX: 812-948-5047
e-Mail: info@SAMTEC.com code 55322

MATERIAL: DO NOT SCALE DRAWING SHEET SCALE: 4:1
INSULATOR: LCP, UL 94 VO, COLOR: BLACK
CONTACT: PHOS BRONZE

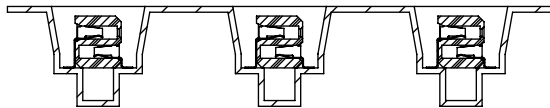
DESCRIPTION:
LOW PROFILE .050 X .050 DOUBLE ROW ASM

DWG. NO.
CLP-1XX-XX-X-DH-XX

BY: PURVIS 11-29-1995 SHEET 1 OF 2

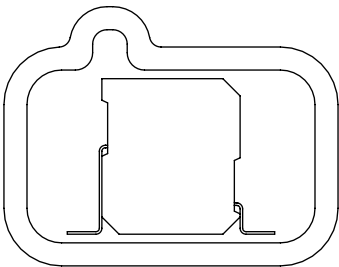


← USER DIRECTION OF UNREELING

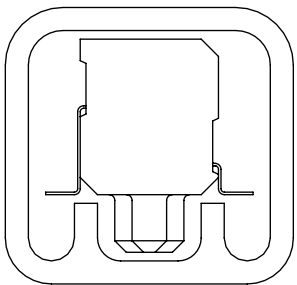


-TR: TAPE & REEL VIEW
(SCALE 2:1)

PACKAGING TUBE VIEW
(SCALE 6:1)



-DH NO OPTION
PT-1-24-02-37
(TUBE USES (2) TP-12)



WITH -A OPTION
PT-1-24-01-62
(TUBE USES (2) TP-12)

PROPRIETARY NOTE

THIS DOCUMENT CONTAINS INFORMATION
CONFIDENTIAL AND PROPRIETARY TO
SAMTEC, INC. AND SHALL NOT BE REPRODUCED
OR TRANSFERRED TO OTHER DOCUMENTS OR
DISCLOSED TO OTHERS OR USED FOR ANY
PURPOSE OTHER THAN THAT WHICH IT WAS
OBTAINED WITHOUT THE EXPRESSED WRITTEN
CONSENT OF SAMTEC, INC.



520 PARK EAST BLVD, NEW ALBANY, IN 47150
PHONE: 812-944-6733 FAX: 812-948-5047
e-Mail info@SAMTEC.com code 55322

SHEET SCALE: 4:1

DESCRIPTION:
LOW PROFILE .050 X .050 DOUBLE ROW ASM
DWG. NO. CLP-1XX-XX-X-DH-XX

BY: PURVIS 11-29-1995 SHEET 2 OF 2