



Product fact sheet

## **CFAST™- adapter** SATA to CFast Device Adapter

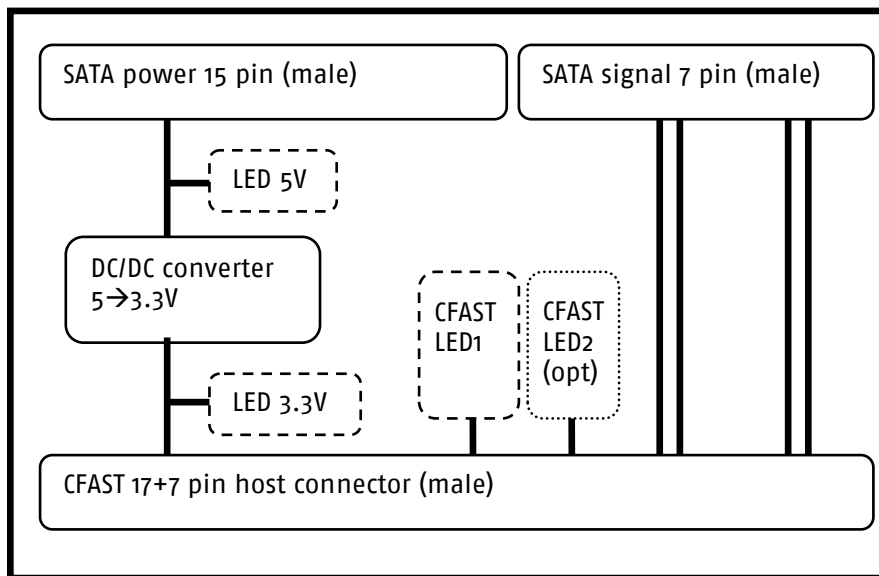
BU: Swissbit Group  
Date: 1 June 2010  
Revision: 1.00  
CFast-Adapter\_fact sheet\_Rev100.doc



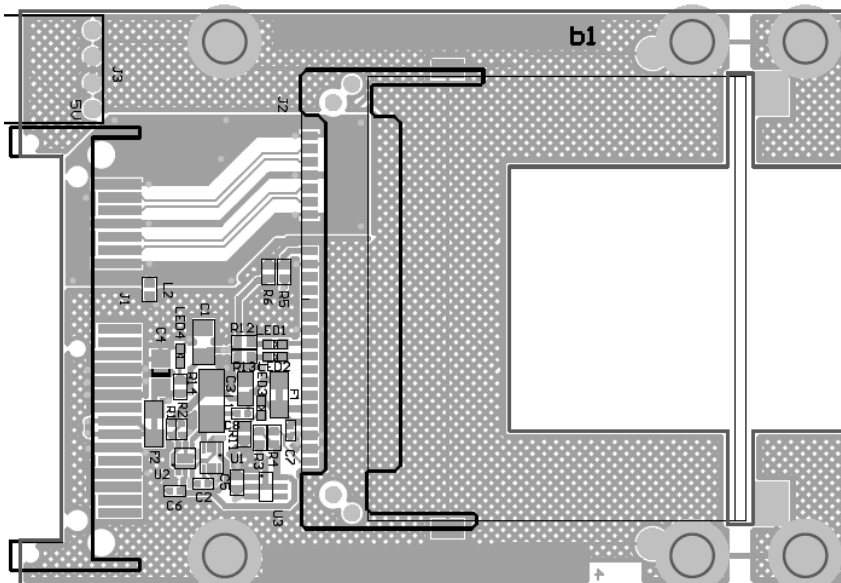
## 2.5" SATA host to CFAST™ Card Adapter

### Feature summary

- Adapter to connect CFAST cards to SATA standard Hosts
- Standard SATA data (7pin)+Power (15pin) connector (male)
- CFAST-Connector (7+17pin)
- SATA straight signal connection
- PWM Step-Down DC/DC converter (5V to 3.3V, max600mA)
- Input voltage 3.4...5.5V
- 4 Optional LED
  - 5V voltage
  - 3.3V voltage
  - CFAST LED1 (transfer indicator)
  - CFAST LED2 (currently not assembled)
- CDI/CDO jumper
- Optional Fuse footprints
- Mechanical compatible with Swissbit's 2.5" SSD housing
- Standard only CFAST connector
- Standard metal cap



metal cap



**Table 1: Electrical parameters**

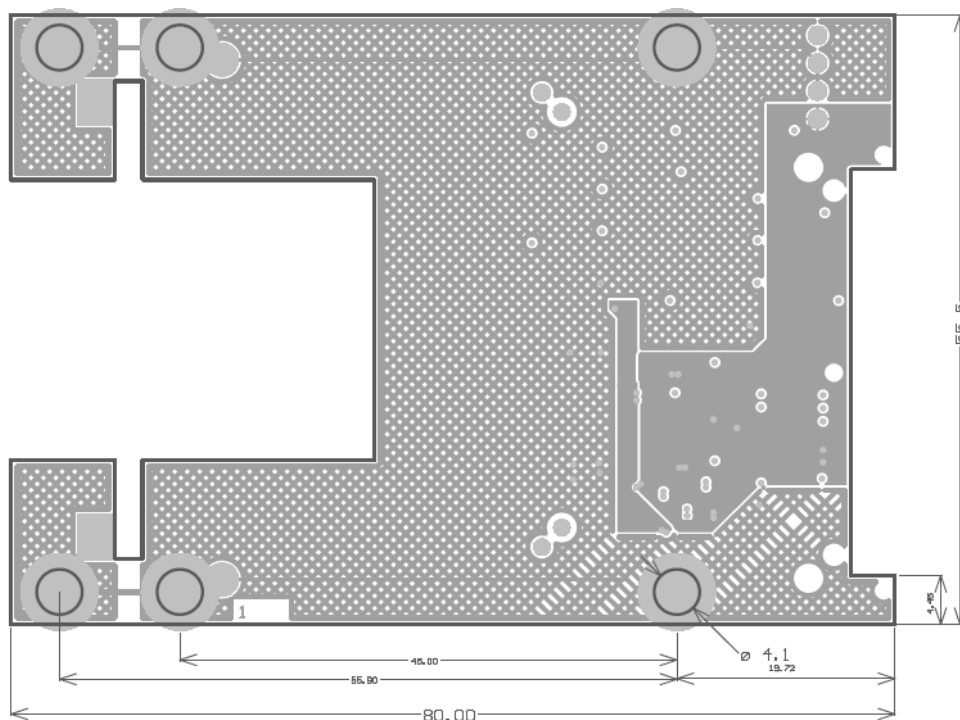
Current Consumption	typical	max	Unit
Input voltage	3.5	5.5	V
Output voltage	3.2	3.4	
Max. permanent current		600	mA

**Table 2: Environmental Specifications**

Environmental Specifications	Operating	Non Operating
Temperature	0 to 70°C	-40 to 85°C
Humidity (non-condensing)	tbd	tbd
Vibration (peak -to-peak)		tbd
Shock		tbd
Connector Durability		tbd

**Table 3: Physical Dimensions**

Physical Dimensions		Unit
Width	55.5	mm
Length	80 (could be cut to 69)	
Thickness	5.5	
Weight (typ.)	10	g



The CFA logo and CFast are trademarks of the CompactFlash Association.  
For more information on the CFast interface, please visit Compact Flash Organization at [www.compactflash.org](http://www.compactflash.org)

For more information on Serial ATA Revision 2.6, please visit Serial ATA International Organization at [www.serialata.org](http://www.serialata.org)



## Why Swissbit?

Swissbit strives to create innovative technologies for future market opportunities utilizing a highly skilled in-house product research and development team. Swissbit maintains a marketing edge by continuing to manufacture world-class high quality memory products and providing customers with both high value and low cost of ownership achieved through efficient processes and procedures.