


NOTES:

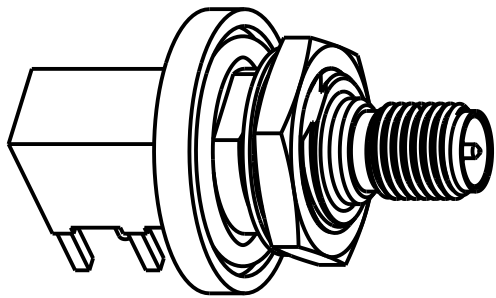
I. MATERIALS OF CONSTRUCTION:
BODY: BRASS, GOLD PLATED

THIRD ANGLE PROJ.

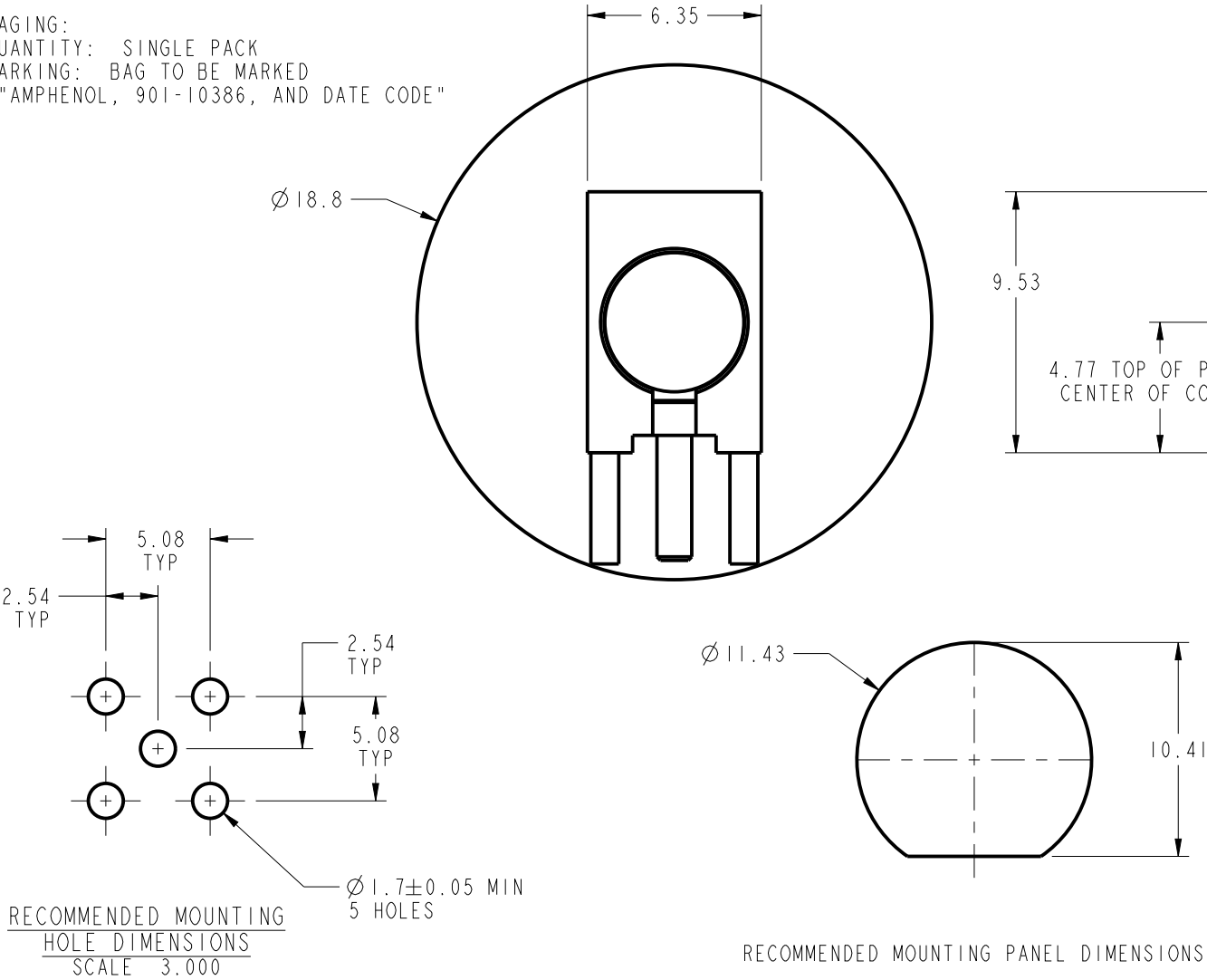


REVISIONS				
REV	DESCRIPTION	DATE	ECO	APPR
A	RELEASE TO MFG.		49217	JTS

1. MATERIALS OF CONSTRUCTION:
BODY: BRASS, GOLD PLATED
CAP: BRASS, NICKEL PLATED
MALE CONTACT: BRASS, GOLD PLATED
INSULATORS: PTFE, NATURAL
GASKET: SILICONE RUBBER
2. ELECTRICAL:
A. IMPEDANCE: 50 OHM
B. FREQUENCY RANGE: DC - 3 GHz
3. MECHANICAL:
A. TEMPERATURE RANGE: -65° C TO +165° C
B. SEALING REQUIREMENTS: WHEN MOUNTED ON PANEL MUST
WITHSTAND WATER PRESSURE AT DEPTH OF 1 METER FOR 30 MIN.
WITHOUT ANY SIGN OF LEAKAGE.
C. DESIGN NOT SUITABLE FOR REFLOW.
4. PACKAGING:
A. QUANTITY: SINGLE PACK
B. MARKING: BAG TO BE MARKED
"AMPHENOL, 901-10386, AND DATE CODE"



SCALE 2.000



SCALE 3.000

CUSTOMER OUTLINE DRAWING
ALL OTHER SHEETS ARE FOR INTERNAL USE ONLY

UNLESS OTHERWISE SPECIFIED, DIMENSIONS ARE IN METRIC AND TOLERANCES ARE: <0.5mm ± 0.05mm 0.5 - 6mm ± 0.1mm 6 - 30mm ± 0.2mm 30 - 120mm ± 0.3mm ANGLES ± 1°	MATERIAL -	DRAWN T. SMITH	DATE 14-Jun-12	TITLE RP SMA JACK R/A BULKHEAD PC MOUNT		Amphenol RF Danbury CT USA, Tainan, Taiwan, Shenzhen, China www.amphenolrf.com	
		ENGINEER T. SMITH	DATE 14-Jun-12				
	REFERENCE EAR# 3608 AND	APPROVED	DATE	SCALE: 6.0:1.0 SHEET 2 OF 2		DRAWING NO. 901-10386	
	CONFIGURATION LEVEL:	CAD FILE		DWG SIZE B	REV A	ITEM NO.	901-10386
	FINISH					PART NO.	901-10386

NOTICE - These drawings, specifications, or other data (1) are, and remain the property of Amphenol corp. (2) must be returned upon request; and (3) are confidential and not to be disclosed to any person other than those to whom they are given by Amphenol Corp. the furnishing of these drawings, specifications, or other data by Amphenol Corp., or to any other person to anyone for any purpose is not to be regarded by implicatioin or otherwise in any manner licensing, granting rights to permitting such holder or any other sperson to manufacture, use or sell any product, process or design, patented or otherwise, that may in any way be related to or disclosed by said drawings, specifications, or other data.