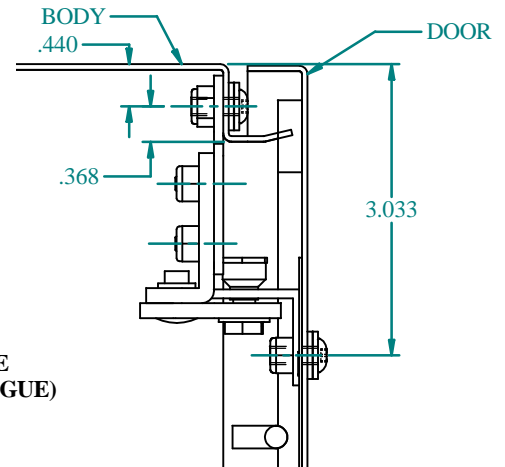


NOTE:
MINIMUM WIDTH UNIT THAT WIND STOP CAN BE
MOUNTED ON IS 20" WIDE UNIT (DIM "B" IN CATALOGUE)

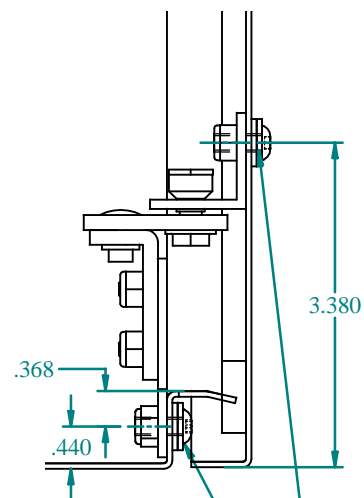
OPENING ANGLE	X	Y
90	4.96	7.36
105	4.17	6.81
120	3.77	6.18
135	3.38	6.02

INSTALLATION INSTRUCTIONS:

- (1) FROM VIEWS AND CHART SELECT THE APPLICATION BEST SUITED FOR YOUR INSTALLATION.
- (2) USING THE "X" AND "Y" DIMENSIONS PLUS THE BOTTOM OR TOP INSTALLATION VIEWS DRILL 0.218 DIA HOLES TO SUIT THE INSTALLATION.
- (3) INSTALL BRACKET THAT COMES IN KIT TO TOP OR BOTTOM OF ENCLOSURE LIP & INSTALL THE ANGLE BRACKET OF WIND STOP TO DOOR WITH 10-32 HARDWARE AND SEALING WASHER SUPPLIED.
NOTE: POSITION OF BRACKET ON DOOR WITH YOUR SELECTED APPLICATION.
- (4) INSTALL BAR BRACKET PER APPLICATION SELECTED PAYING ATTENTION TO PIN ORIENTATION.



INSTALLATION AT TOP OF ECLIPSE IN CLOSED POSITION



INSTALLATION AT BOTTOM OF ECLIPSE DOOR IN CLOSED POSITION.

DRILL 0.218 DIA HOLE
2 PLS ON BODY SEALING
FLANGE AT THE TOP
& 3 PLS ON DOOR.

TOOL BOX



Tape
Measure



Drill, use
(0.218 in)



1/8 ALLEN
KEY



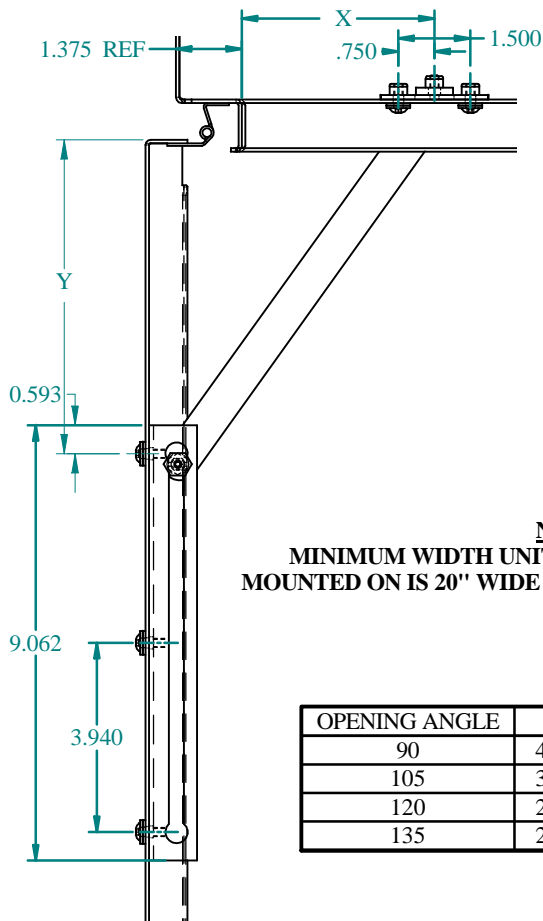
3/8" Socket
Wrench



DSTOPK

INSTALLATION OF DOOR WIND STOP KIT ON A 1418 & 1422 SERIES WALLMOUNT.

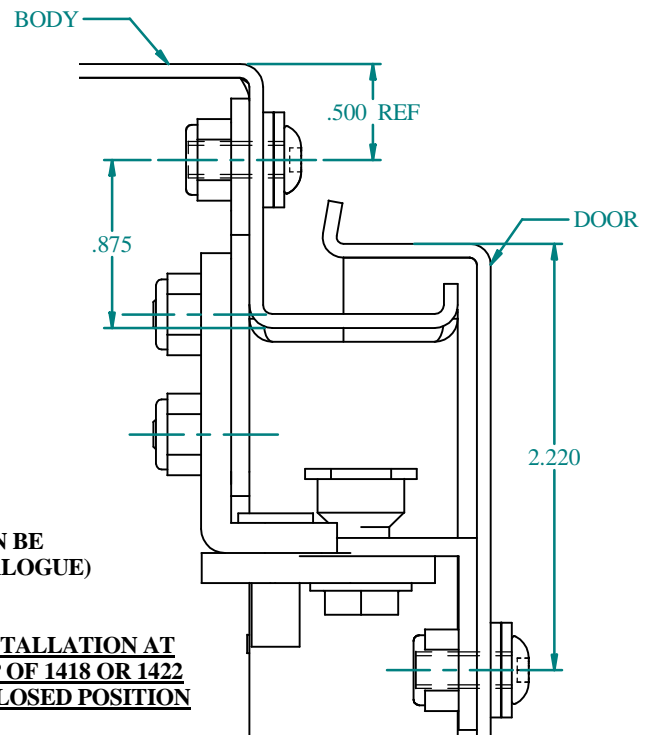
BUL10277
REV. C



NOTE:
MINIMUM WIDTH UNIT THAT WIND STOP CAN BE
MOUNTED ON IS 20" WIDE UNIT (DIM "B" IN CATALOGUE)

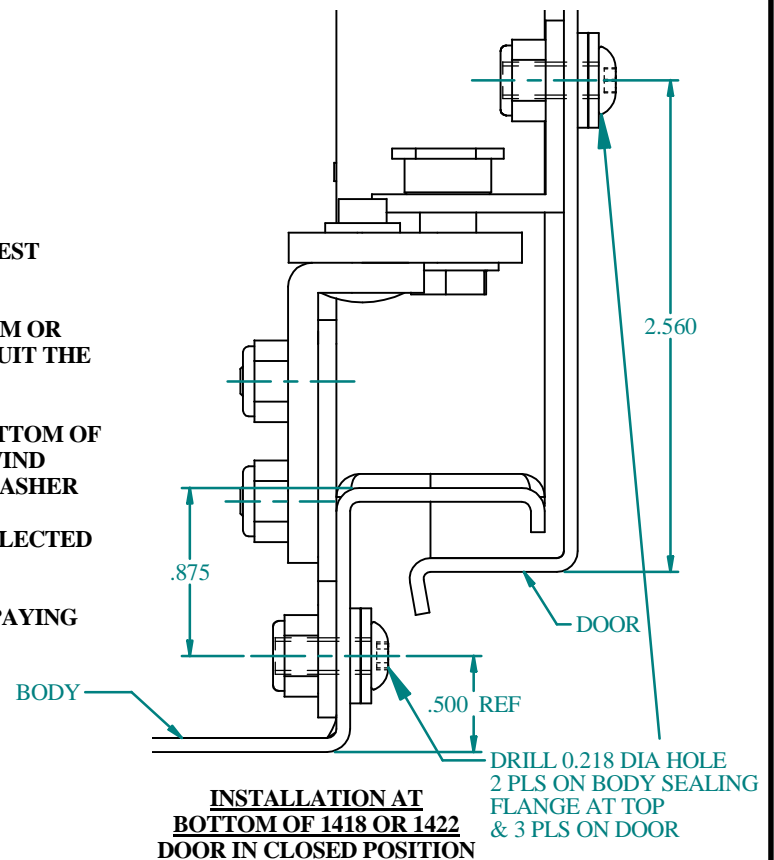
OPENING ANGLE	X	Y
90	4.01	6.54
105	3.22	5.98
120	2.82	5.36
135	2.43	5.20

**INSTALLATION AT
TOP OF 1418 OR 1422
IN CLOSED POSITION**



INSTALLATION INSTRUCTIONS:

- (1) FROM VIEWS AND CHART SELECT THE APPLICATION BEST SUITED FOR YOUR INSTALLATION.
- (2) USING THE "X" AND "Y" DIMENSIONS PLUS THE BOTTOM OR TOP INSTALLATION VIEWS DRILL 0.218 DIA HOLES TO SUIT THE INSTALLATION.
- (3) INSTALL BRACKET THAT COMES IN KIT TO TOP OR BOTTOM OF ENCLOSURE LIP & INSTALL THE ANGLE BRACKET OF WIND STOP TO DOOR WITH 10-32 HARDWARE AND SEALING WASHER SUPPLIED.
NOTE: POSITION OF BRACKET ON DOOR WITH YOUR SELECTED APPLICATION.
- (4) INSTALL BAR BRACKET PER APPLICATION SELECTED PAYING ATTENTION TO PIN ORIENTATION.



**INSTALLATION AT
BOTTOM OF 1418 OR 1422
DOOR IN CLOSED POSITION**

DRILL 0.218 DIA HOLE
2 PLS ON BODY SEALING
FLANGE AT TOP
& 3 PLS ON DOOR

TOOL BOX



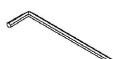
Tape
Measure



Drill, use
(0.218 in)



1/8 ALLEN
KEY



3/8" Socket
Wrench

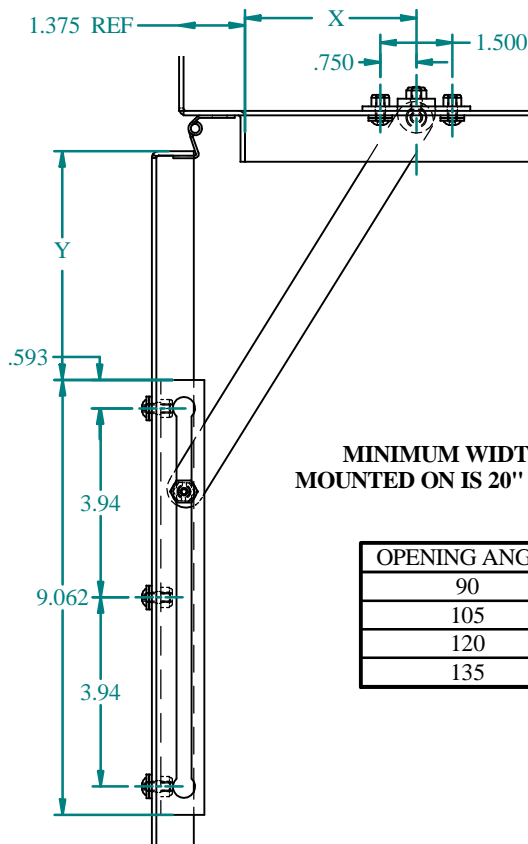


**HAMMOND
MANUFACTURING™
ENCLOSURES**

DSTOPK

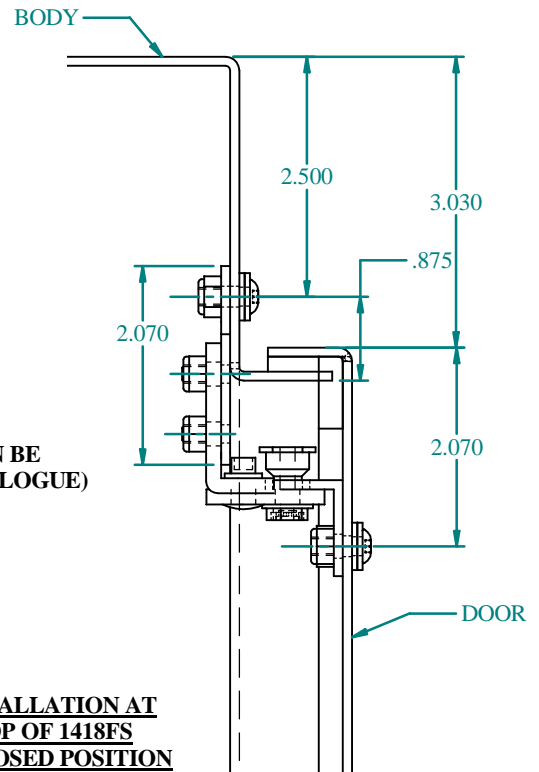
INSTALLATION OF DOOR WIND STOP KIT ON A 1418FS SERIES FREE STANDING.

BUL10277
REV. C



NOTE:
MINIMUM WIDTH UNIT THAT WIND STOP CAN BE
MOUNTED ON IS 20" WIDE UNIT (DIM "B" IN CATALOGUE)

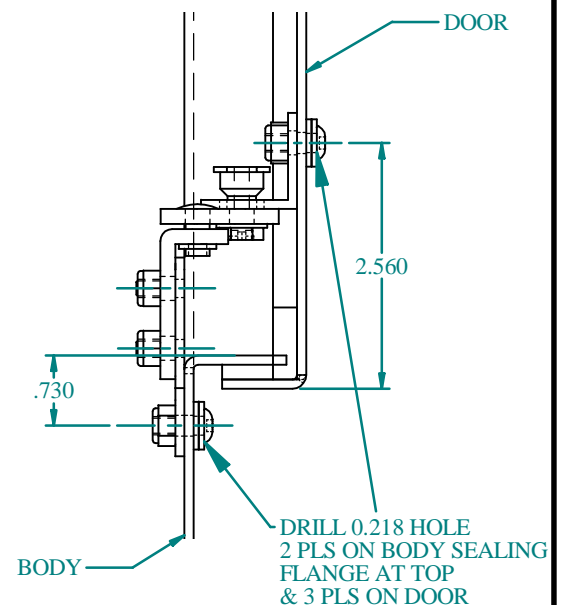
OPENING ANGLE	X	Y
90	4.01	6.54
105	3.22	5.98
120	2.82	5.36
135	2.43	5.20



**INSTALLATION AT
TOP OF 1418FS
IN CLOSED POSITION**

INSTALLATION INSTRUCTIONS:

- (1) FROM VIEWS AND CHART SELECT THE APPLICATION BEST SUITED FOR YOUR INSTALLATION.
- (2) USING THE "X" AND "Y" DIMENSIONS PLUS THE BOTTOM OR TOP INSTALLATION VIEWS DRILL 0.218 DIA HOLES TO SUIT THE INSTALLATION.
- (3) INSTALL BRACKET THAT COMES IN KIT TO TOP OR BOTTOM OF ENCLOSURE LIP & INSTALL THE ANGLE BRACKET OF WIND STOP TO DOOR WITH 10-32 HARDWARE AND SEALING WASHER SUPPLIED.
NOTE: POSITION OF BRACKET ON DOOR WITH YOUR SELECTED APPLICATION.
- (4) INSTALL BAR BRACKET PER APPLICATION SELECTED PAYING ATTENTION TO PIN ORIENTATION.



**INSTALLATION AT
BOTTOM OF 1418FS DOOR
IN CLOSED POSITION**

TOOL BOX



Tape
Measure



Drill, use
(0.218 in)



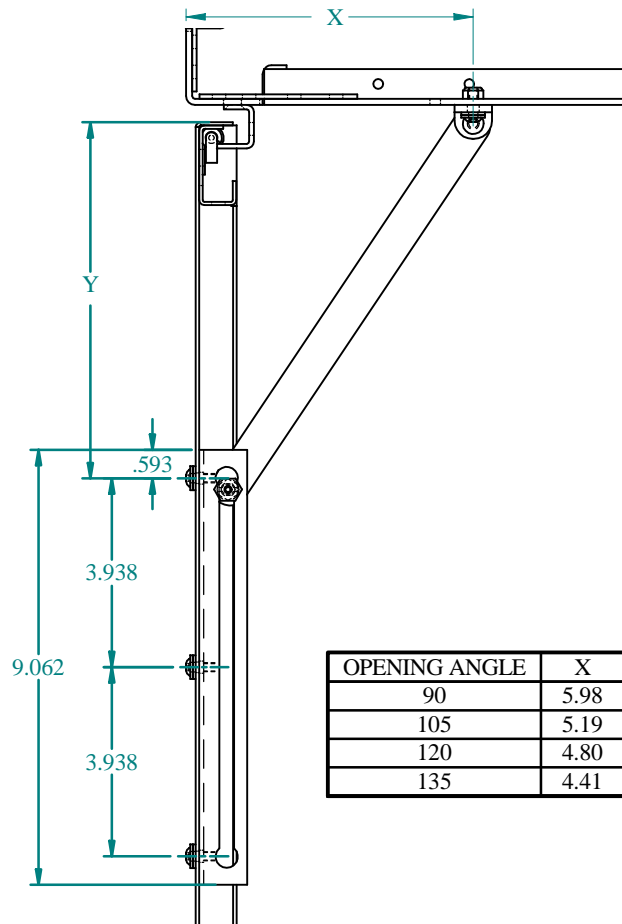
1/8 ALLEN
KEY



3/8" Socket
Wrench

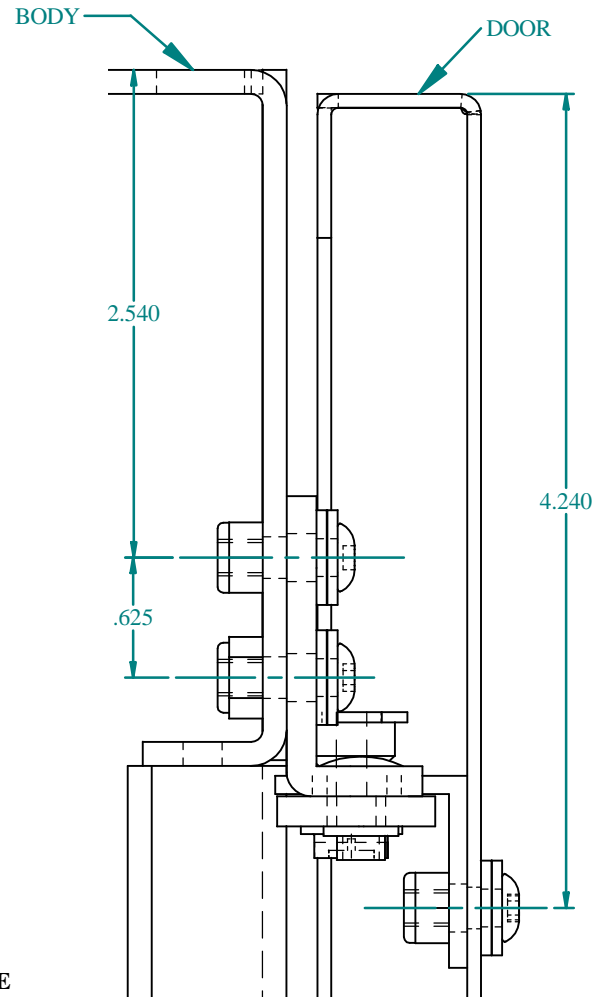


**HAMMOND
MANUFACTURING™
ENCLOSURES**



OPENING ANGLE	X	Y
90	5.98	7.42
105	5.19	6.87
120	4.80	6.24
135	4.41	6.08

NOTE:
MINIMUM WIDTH UNIT THAT WIND STOP CAN BE
MOUNTED ON IS 20" WIDE UNIT (DIM "B" IN CATALOGUE)



**INSTALLATION AT
TOP OF IME
IN CLOSED POSITION**

INSTALLATION INSTRUCTIONS:

- (1) FROM VIEWS AND CHART SELECT THE APPLICATION BEST SUITED FOR YOUR INSTALLATION.
- (2) USING THE "X" AND "Y" DIMENSIONS PLUS THE BOTTOM OR TOP INSTALLATION VIEWS DRILL 0.218 DIA HOLES TO SUIT THE INSTALLATION.
- (3) INSTALL BRACKET THAT COMES IN KIT TO TOP OR BOTTOM OF ENCLOSURE LIP & INSTALL THE ANGLE BRACKET OF WIND STOP TO DOOR WITH 10-32 HARDWARE AND SEALING WASHER SUPPLIED.
NOTE: POSITION OF BRACKET ON DOOR WITH YOUR SELECTED APPLICATION.
- (4) INSTALL BAR BRACKET PER APPLICATION SELECTED PAYING ATTENTION TO PIN ORIENTATION.

TOOL BOX



Tape Measure



Drill, use (0.218 in)



1/8 ALLEN KEY



3/8" Socket Wrench



**HAMMOND
MANUFACTURING™
ENCLOSURES**