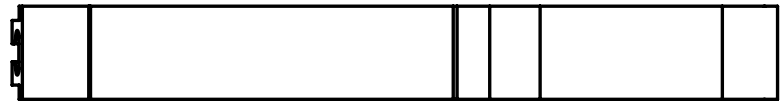
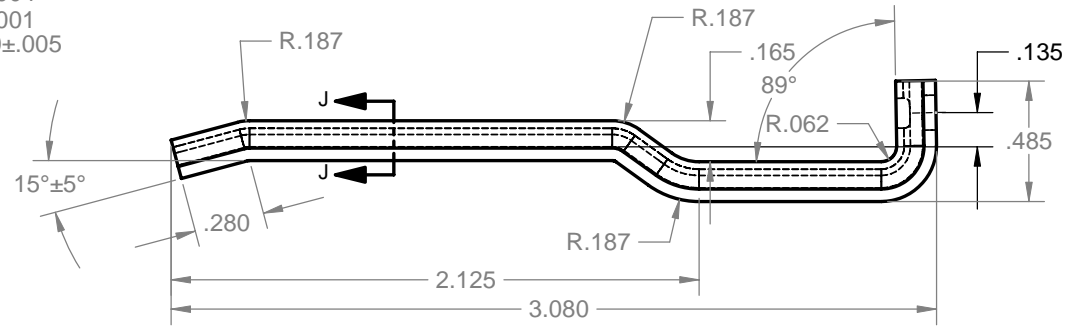
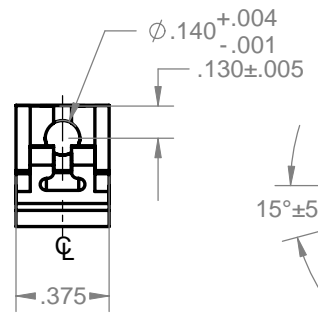
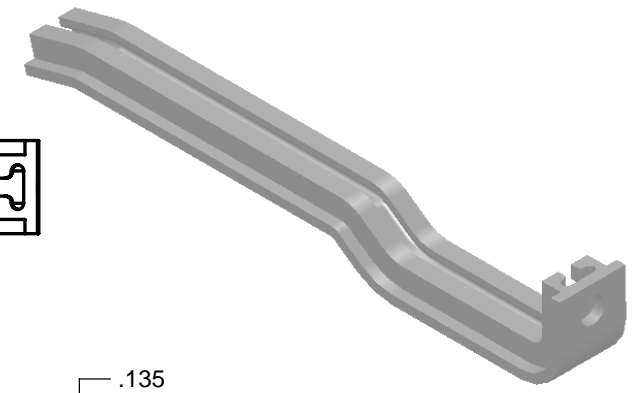
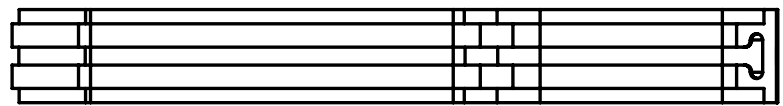
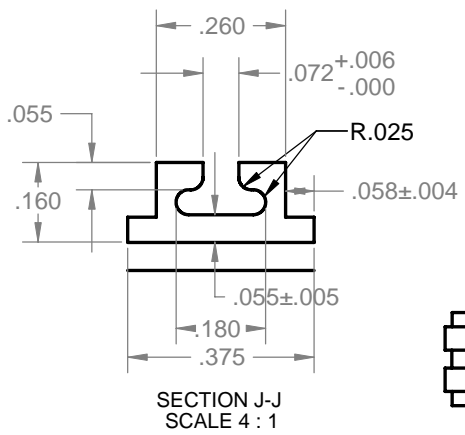


REVISIONS				
ZONE	REV.	DESCRIPTION	DATE	APPROVED
ALL	F		01/08/09	



4. PARTS TO BE DEGREASED AFTER FABRICATION  
 3. PARTS TO BE FREE OF EXCESSIVE BURS AND SURFACE SCRATCHES  
 2. FINISH: CLEAR ANODIZE  
 1. MATERIAL: ALUM. EXTRUSION 6063-T5

NOTES: UNLESS OTHERWISE SPECIFIED.

**PROPRIETARY AND CONFIDENTIAL**  
 THE INFORMATION CONTAINED IN THIS DRAWING IS THE SOLE PROPERTY OF VECTOR ELECTRONICS & TECH., INC. ANY REPRODUCTION IN PART OR AS A WHOLE WITHOUT THE WRITTEN PERMISSION OF VECTOR ELECTRONICS & TECH., INC. IS PROHIBITED.

UNLESS OTHERWISE SPECIFIED:	
DIMENSIONS ARE IN INCHES	
TOLERANCES:	
FRACTIONAL ±	
ANGULAR: ±5°	
TWO PLACE DECIMAL ±.03	
THREE PLACE DECIMAL ±.010	
INTERPRET GEOMETRIC TOLERANCING PER:	
MATERIAL <b>1</b>	
FINISH <b>2</b>	
DO NOT SCALE DRAWING	

NAME	DATE
DRAWN TRUSHAR	01/08/09
CHECKED	
ENG APPR.	
MFG APPR.	
Q.A.	
THIRD ANGLE PROJECTION	



<b>VECTOR</b> ELECTRONICS & TECHNOLOGY, INC		11115 VANOWEN ST., NORTH HOLLYWOOD, CA 91605	
<b>CARD GUIDE</b> <b>BR27-1</b>			
SIZE DWG. NO.		REV	
<b>B M5474-1-5</b>		<b>F</b>	
SCALE: 1:1 WEIGHT:		SHEET 1 OF 1	