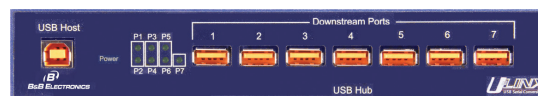


# Product Overview

## Front View



To USB Host      LED Indicators      Downstream Ports

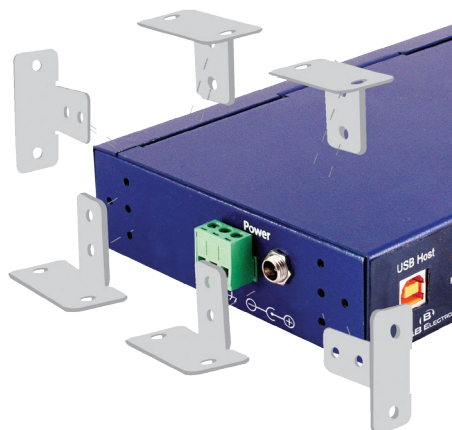
## Side View



Detachable Terminal Block      Barrel Plug Power

## Panel Mounting

The panel mount brackets can be attached to either side of the hub. They can be attached in (4) positions: Up, Down, Forward and Back.



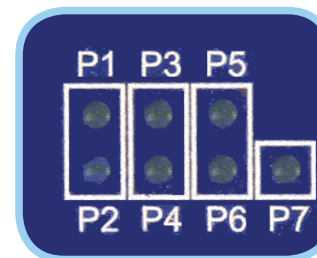
## 3 Grounding

We strongly recommend that you ground the chassis. Connect a grounding wire from the green ground lug to a good source of earth ground.



You can order a grounding strap at:  
<http://www.bb-elec.com/product.asp?sku=CU15B>

## 4 LED Status



Power ON = Power connected  
Port ON = Port active, ready for use  
Port OFF = Port fault

## 1 Mounting

### DIN Rail Mounting

Attach the DIN rail bracket with the flat surface of the bracket facing the back of the hub.

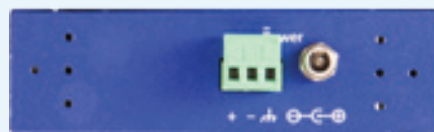


## 2 Connect Your Power Supply

### External Power

Both the UHR207 and the UHR307 require 10 to 30 VDC external power. They will consume a maximum of 30 W. You can provide power via the barrel plug port or the terminal block.

Terminal block is polarity protected.



POS NEG GND

### ABOUT USB

**Video: Making USB Reliable in Rugged Applications**

[www.bb-elec.com/tech\\_articles/video\\_usb-tech-tips.asp](http://www.bb-elec.com/tech_articles/video_usb-tech-tips.asp)

**Video: USB Hub Introduction**

[www.bb-elec.com/tech\\_articles/video\\_UHR304.asp](http://www.bb-elec.com/tech_articles/video_UHR304.asp)

## Troubleshooting

Both the UHR207 and the UHR307 require 10 to 30 VDC external power. They will consume a maximum of 30 W. You can provide power via the barrel plug port or the terminal block.

You will need no drivers to install a USB hub. Your operating system will discover and install it automatically as soon as the hub is powered up and connected to your computer. If you wish to confirm that the installation was successful, go to Device Manager and make sure that your new hub is listed there.

USB 2.0 is backwards-compatible with USB 1.0 and USB 1.1. You can use legacy devices with your new USB 2.0 hub. Note, however, that USB 1.0 and USB 1.1 devices will continue to operate at their original, slower speeds.

### UHR207 vs UHR307

Both the UHR207 and the UHR307 are ruggedized for tough industrial applications. The UHR307 adds 4 kV isolation.

### Certifications

- FCC Class B
- CE
- EN 55022: 2006 + A1:2007 Class B Emissions
- EN 61000-6-2: 2006 Generic Standards for Industrial environments
- EN 61000-4-2: 2008 (ESD)
- EN 61000-4-3: 2006 (RFI)
- EN 61000-4-4: 2004 (EFT)
- EN 61000-4-5: 2008 Electrical Surges
- EN 61000-4-6: 2005 Conducted Immunity
- EN 61000-4-8: 2009 Magnetic Field Immunity
- IEC 60601-1-2:2007 Medical electrical equipment, Electromagnetic compatibility

## Recommended Accessories and Power Supplies

### External Power Supply

<http://www.bb-elec.com/UHRx07/ACC>



PS12VLB-INT-MED

### Industrial Power Supply

<http://www.bb-elec.com/UHRx07/ACC>



PS5R-SC24

## Fast, Easy Answers

- First, check step 3.
- Then use your smart phone to access complete documentation on our web site. Simply scan the code to the right.



<http://www.bb-elec.com/UHRx07>



1-888-948-2248 | Europe: +353 91 792444

[www.bb-elec.com](http://www.bb-elec.com)

707 Dayton Road | PO Box 1040 | Ottawa, IL 61350  
Phone: 815-433-5100 | Fax: 815-433-5109  
[www.bb-elec.com](http://www.bb-elec.com) | E-mail: [info@bb-elec.com](mailto:info@bb-elec.com)

© 2012 B&B Electronics Manufacturing Company

**B&B ELECTRONICS**

**QUICK  
START  
GUIDE**



**UHR207 & UHR307**  
Non-Isolated      Isolated  
Industrial 7-Port USB Hubs

### ✓ First Things First...

Before you begin, be sure you have the following:

- ☐ 7-Port Industrial USB Hub
- ☐ USB Cable
- ☐ Panel Mount Adapters
- ☐ DIN Rail Adapter
- ☐ Power Supply (optional but not included)

**B&B ELECTRONICS**  
Make The Right Connections

Fast and easy on the web: [www.bb-elec.com](http://www.bb-elec.com)