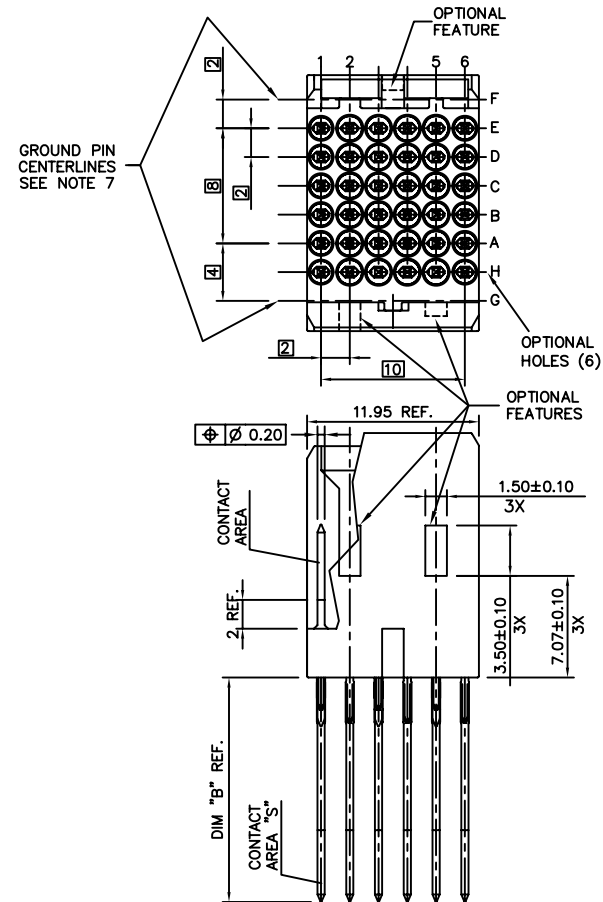
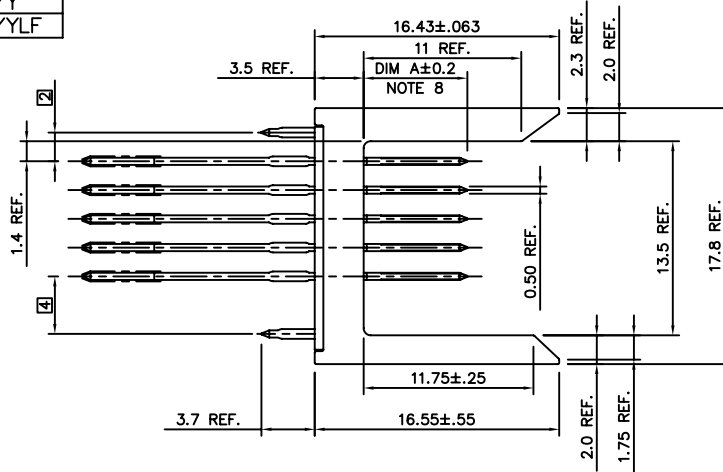


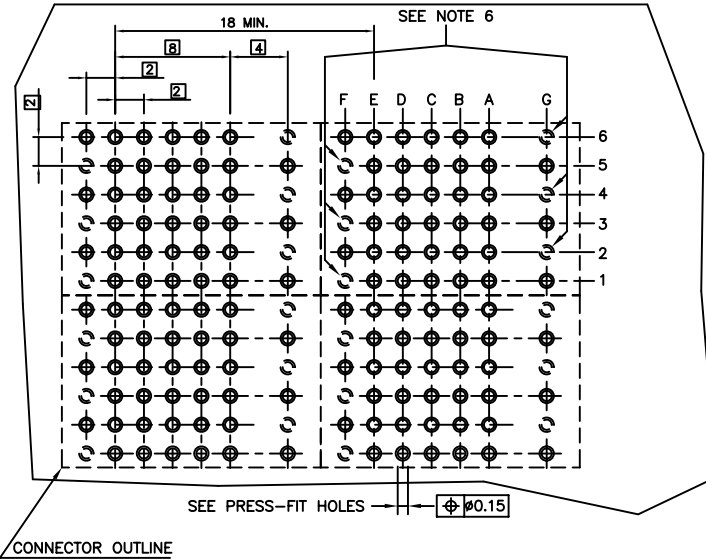


PRODUCT NO
 72060-XYX
 72060-XYXLF


mat'l. code				surface		tolerance	projection	product family	
SEE NOTES				ASME Y14.5		ASME Y14.5	 MM	METRAL (tm)	
ltr	ec'n no	dr	date	tolerances unless otherwise specified				title	
F	V11860	CGD	2000-07-12	angles	line	X ± 3	scale 1:1	5 ROW P.F. HEADER ASSEMBLY -EE	
G	V05-0575	DAI	2005-08-08			XX ± 18		dwg no	
H	V06-0622	JRV	2006-06-26	0° ± 2'		XXX ± 051		sheet 1 of 3	
				dr	S. STONER	02/05/97		72060	
				engr	J. SHUEY	02/05/97		size	
				chr	S. STONER	02/05/97		A4	
				appd	S. STONER	02/05/97		type	
sheet	revision	H	H	H				CUSTOMER Drawing	
index	sheet	1	2	3					

PRODUCT NO
72060-XYX
72060-XYLF



REQUIRED PC BOARD LAYOUT
COMPONENT SIDE
SEE PRINT 58351 FOR
ADDITIONAL PCB INFORMATION

PLATING IN CONTACT AREA	
DASH NUMBER	PERFORMANCE LEVEL
-1YY	TELCORDIA CO
-2YY	TELECOM CLASS
-3YY	IEC CLASS 1
-5YY	TELCORDIA UE
-9YY	0.76?m GXT
-1YYLF	TELCORDIA CO
-2YYLF	TELECOM CLASS
-3YYLF	IEC CLASS 1
-5YYLF	TELCORDIA UE
-9YYLF	0.76?m GXT

NOTES:

- FOR DIM "A", AND "B", SEE SHEET 2
- BODY MATERIAL: ZINC ALLOY
- PIN MATERIAL: PHOSPHOR BRONZE.
- CONTACT AREA "S" ONLY FOR REAR PLUG-UP.
- PLATING ON PRESS-FIT AREA:
SnPb FOR -XYX
Sn (LEAD FREE) FOR XYLF
- THESE HOLES ARE NEEDED WHEN USING AN EE SHROUD, i.e., 70438-111.
- GROUND PINS IN POSITIONS F2, F4, F6, G1, G3, AND G5.
- DIM A AFTER ASSEMBLY TO BOARD.
- THE PRODUCTS WHERE THE PART NUMBER ENDS IN LF MEET THE EUROPEAN UNION DIRECTIVES AND OTHER COUNTRY REGULATIONS AS DESCRIBED IN GS-22-008.
- THESE PRODUCTS WILL NOT WITHSTAND WAVE SOLDER OR REFLOW OPERATIONS.
- FOR LEAD FREE PART NUMBERS, ADD AN 'LF' SUFFIX. EXAMPLE: 72060-X11LF.

mat'l. code				surface		tolerance		projection		product family	
SEE NOTES				ASME Y14.5		ASME Y14.5		MM		METRAL (tm)	
ltr	ecr no	dr	date	tolerances unless otherwise specified		X #3		MM		title	
H				angles	line	XX ±.18		scale 1:1		5 ROW P.F. HEADER ASSEMBLY -EE	
				dr		S. STONER 02/05/97		FCI		dwg no	
				engr		J. SHUEY 02/05/97				sheet 2 of	
				chr		S. STONER 02/05/97				72060	
				appd		S. STONER 02/05/97				size	
sheet	revision									CUSTOMER Drawing	
index	sheet										



FCIconnect.com

1 | 2

3 |

4

PRODUCT NUMBER	ROW	DIM"A"	DIM"B"
72060-X11	E	6.50	4.30
NOTE 10	D	6.50	4.30
LEAD FREE OPTION	C	6.50	4.30
	B	6.50	4.30
	A	6.50	4.30
72060-X12	E	5.75	4.30
NOTE 10	D	5.75	4.30
LEAD FREE OPTION	C	5.75	4.30
	B	5.75	4.30
	A	7.25	4.30
72060-X13	E	5.75	4.30
NOTE 10	D	5.00	4.30
LEAD FREE OPTION	C	5.75	4.30
	B	5.75	4.30
	A	6.50	4.30
72060-X14	E	5.75	4.30
NOTE 10	D	5.75	4.30
LEAD FREE OPTION	C	7.25	4.30
	B	5.75	4.30
	A	5.75	4.30
72060-X16	E	5.75	4.30
NOTE 10	D	5.75	4.30
LEAD FREE OPTION	C	5.75	4.30
	B	5.75	4.30
	A	5.75	4.30
72060-X17	E	8.00	4.30
NOTE 10	D	8.00	4.30
LEAD FREE OPTION	C	8.00	4.30
	B	8.00	4.30
	A	8.00	4.30
72060-X18	E	5.00	4.30
NOTE 10	D	5.00	4.30
LEAD FREE OPTION	C	5.00	4.30
	B	5.00	4.30
	A	5.00	4.30

NO REAR PLUG-UP

PRODUCT NUMBER	ROW	DIM"A"	DIM"B"
72060-X21	E	6.50	13.60
NOTE 10	D	6.50	13.60
LEAD FREE OPTION	C	6.50	13.60
	B	6.50	13.60
	A	6.50	13.60
72060-X22	E	5.75	13.60
NOTE 10	D	5.75	13.60
LEAD FREE OPTION	C	5.75	13.60
	B	5.75	13.60
	A	7.25	13.60
72060-X23	E	5.75	13.60
NOTE 10	D	5.00	13.60
LEAD FREE OPTION	C	5.75	13.60
	B	5.75	13.60
	A	6.50	13.60
72060-X24	E	5.75	13.60
NOTE 10	D	5.75	13.60
LEAD FREE OPTION	C	7.25	13.60
	B	5.75	13.60
	A	5.75	13.60
72060-X26	E	5.75	13.60
NOTE 10	D	5.75	13.60
LEAD FREE OPTION	C	5.75	13.60
	B	5.75	13.60
	A	5.75	13.60
72060-X27	E	8.00	13.60
NOTE 10	D	8.00	13.60
LEAD FREE OPTION	C	8.00	13.60
	B	8.00	13.60
	A	8.00	13.60
72060-X28	E	5.00	13.60
NOTE 10	D	5.00	13.60
LEAD FREE OPTION	C	5.00	13.60
	B	5.00	13.60
	A	5.00	13.60

REAR PLUG-UP
OR WIRE WRAP

PRODUCT NUMBER	ROW	DIM"A"	DIM"B"
72060-X31	E	6.50	17.00
NOTE 10	D	6.50	17.00
LEAD FREE OPTION	C	6.50	17.00
	B	6.50	17.00
	A	6.50	17.00
72060-X32	E	5.75	17.00
NOTE 10	D	5.75	17.00
LEAD FREE OPTION	C	5.75	17.00
	B	5.75	17.00
	A	7.25	17.00
72060-X33	E	5.75	17.00
NOTE 10	D	5.00	17.00
LEAD FREE OPTION	C	5.75	17.00
	B	5.75	17.00
	A	6.50	17.00
72060-X34	E	5.75	17.00
NOTE 10	D	5.75	17.00
LEAD FREE OPTION	C	7.25	17.00
	B	5.75	17.00
	A	5.75	17.00
72060-X36	E	5.75	17.00
NOTE 10	D	5.75	17.00
LEAD FREE OPTION	C	5.75	17.00
	B	5.75	17.00
	A	5.75	17.00
72060-X37	E	8.00	17.00
NOTE 10	D	8.00	17.00
LEAD FREE OPTION	C	8.00	17.00
	B	8.00	17.00
	A	8.00	17.00
72060-X38	E	5.00	17.00
NOTE 10	D	5.00	17.00
LEAD FREE OPTION	C	5.00	17.00
	B	5.00	17.00
	A	5.00	17.00

REAR PLUG-UP
AND WIRE WRAP

mat'l. code SEE NOTES				surface ASME Y14.5		tolerance ASME Y14.5		projection 		product family METRAL (tm)	
ltr	ecr no	dr	date	tolerances unless otherwise specified							
H				angles	line	X ±3		MM		title 5 ROW P.F. HEADER ASSEMBLY -EE	
				0° ±2'	line	XX ±18		scale 1:1		dwg no 72060	
				dr	S. STONER	02/05/97		FCI		sheet 3 of size A4	
				engr	J. SHUEY	02/05/97				type CUSTOMER Drawing	
				chr	S. STONER	02/05/97					
				appd	S. STONER	02/05/97					
sheet index	revision sheet										