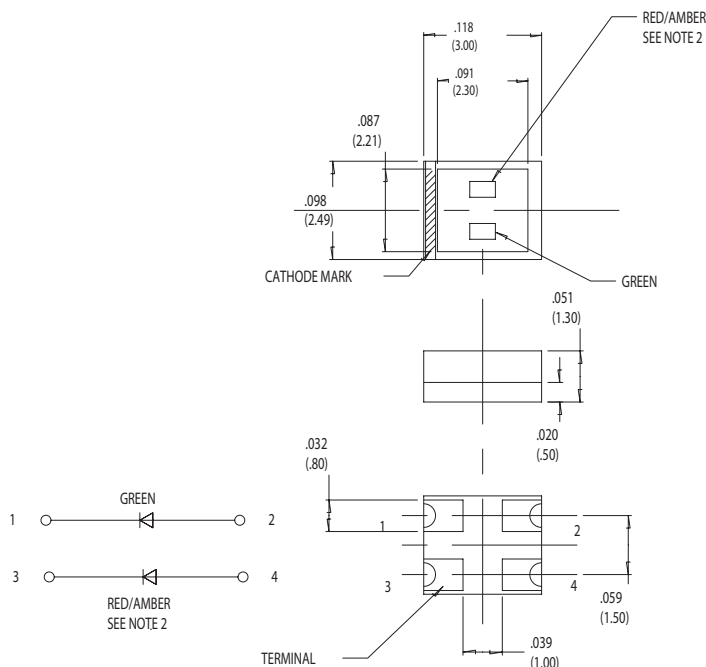


7016X Series Bicolor SMT LEDs

Description and Features



Color Combinations:

- Red/Green
- Green/Yellow

Surface Mount Technology

- Tape and reel packaged for high-speed autoinsertion.
- Convection and vapor-phase reflow compatible.
- Compact form enables high density placement.
- Packaged 2500 per reel.

Leading Edge LED Optoelectronic Performance

- Consistent high brightness.

Exceptional Reliability

- Stringent process controls assure quality.
- Extensive qualification testing to meet strictest requirements.
- Designed to permit easy post-reflow solder joint inspection.

- Refer to "Solder Pad Geometry 1.pdf"

All dimensions are in inches (mm)

For 7016X1/5: Terminals 3 & 4 are for red LED.

For 7016X5/7: Terminals 3 & 4 are for amber LED.

Electro-Optical Characteristics and Ratings

PART NUMBER	7016X1/5	7016X5/7
Output Color	Red/Green	Green/Yellow
Diffused/Non-Diffused	Non-Diffused	Non-Diffused
Package Color	Clear	Clear
Power Dissipation (mW)	60	60
Peak Forward Current Max. (mA)	75/60	60
Reverse Current Max. ($V_R = 4V$)	100	100
Operating temperature ($^{\circ}C$)	-25 to +80	-25 to +80
Storage Temperature ($^{\circ}C$)	-30 to +85	-30 to +85
Forward Voltage Typ. ($I_F = 20mA$)	1.75/2.2	2.2/2.2
Forward Voltage Max. ($I_F = 20mA$)	2.5/2.8	2.8/2.8
Viewing Angle (degrees)	110	110
Luminous Intensity Min. ($I_F = 20mA$)	9.0	9.0
Luminous Intensity Max. ($I_F = 20mA$)	16/20	20/16
Peak Wavelength ($I_F = 20mA$)	660/570	570/580
Rated Current (mA)	20/20	20/20
Continuous Forward Current Max. (mA)	30/25	25