

This document is the property of and embodies CONFIDENTIAL and PROPRIETARY information of FCI. No part of the information shown on this document may be used in any way or disclosed to others without the written consent of FCI.
Copyright FCI.

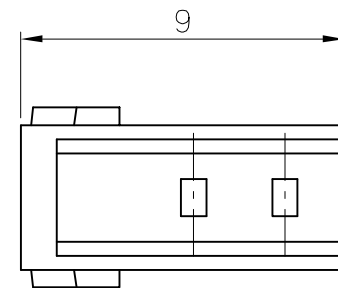
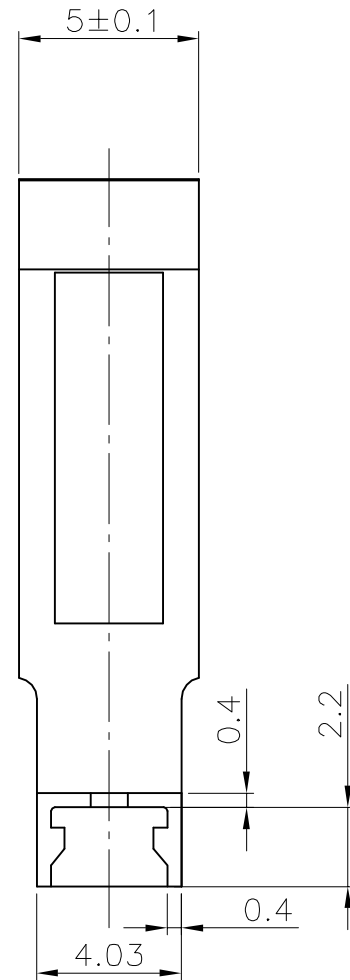
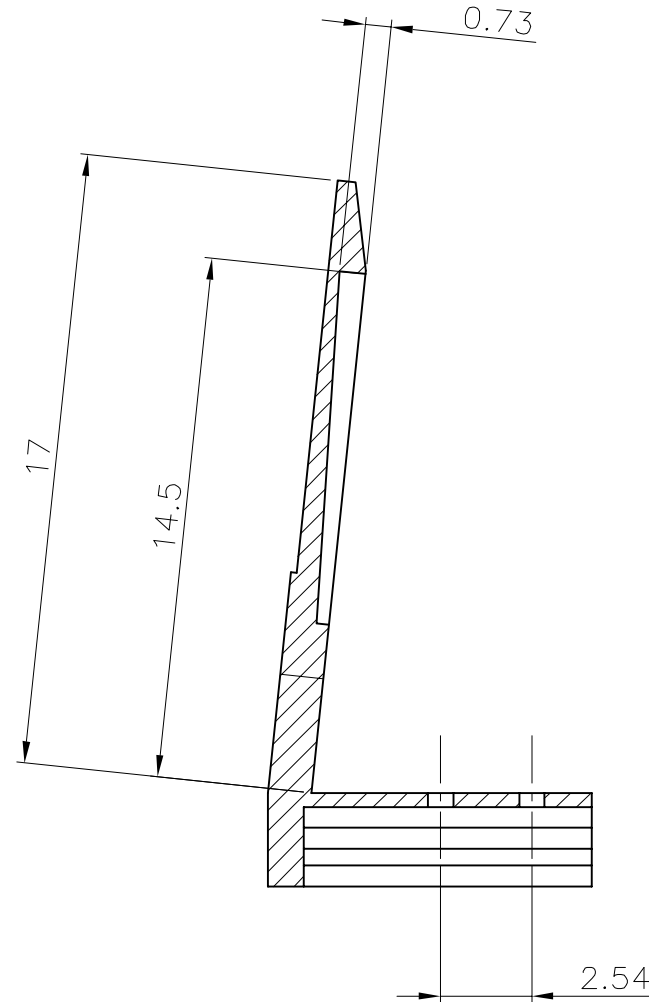


FCIconnect.com

FCI CONFIDENTIAL

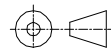


PRODUCT NUMBER
67030-001LF

WHEN REQUIRED, ADD SUFFIX LETTER "LF"
INDICATES THE PRODUCT IS RoHS
COMPATIBLE, SEE NOTE 3



NOTES :

- MATERIAL : NYLON 6/6, 25% GLASSFIBER
FLAMMABILITY PER UL-94-V0.
COLOUR : BLACK
- FOR LATCH APPLICATION SEE TA 339
- RoHS COMPATIBLE PRODUCT
 - LABELLING:
 - MEETS PACKAGING SPECS AS PER GS-14-920
 - LEGAL STATEMENT : SEE GS-22-008
 - THE PRODUCT IS NOT INTENDED TO BE EXPOSED TO MANUFACTURING SOLDER PROCESS
 - PRODUCT MEETS WITH EU 2002/EG/95

mat'l. code SEE NOTE				surface ISO 1302 ✓		tolerance ISO 406 ISO 1101		projection 		product family BERGSTIK					
ltr	ecn no	dr	date	tolerances unless otherwise specified					title SR CLINCHER BERGSTIK LATCH						
B	F05-0256	LMU	05.10.11	angles	linear	.X ±0.30									
C	F06-0236	LMU	06.07.17			.XX ±0.15									
D	F07-0175	LMU	07.04.12			.XXX ±0.05									
				dr	L.MULIN		05.09.28		dwg no 67030						
				engr	J.COMPAGNON		05.09.28								
				chr					sheet 1 of 1 size A3						
				appd	JM.C		05.09.28								
sheet index		revision sheet								type CUSTOMER Drawing					

form: A3

\\fci\share\Engineering\Plans\ECPF07-0175\67030\01.dwg