

4

3

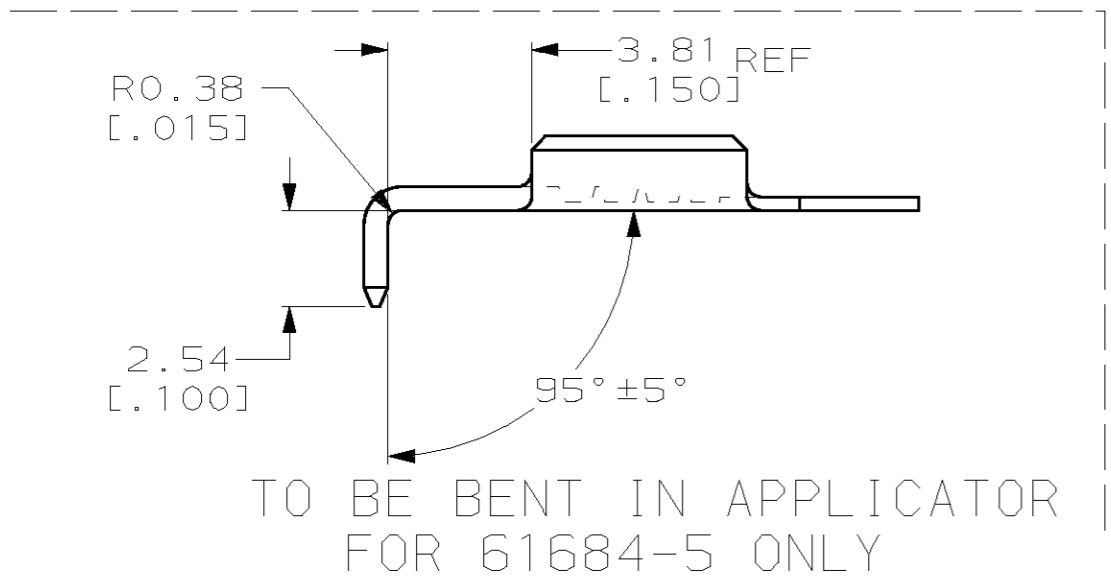
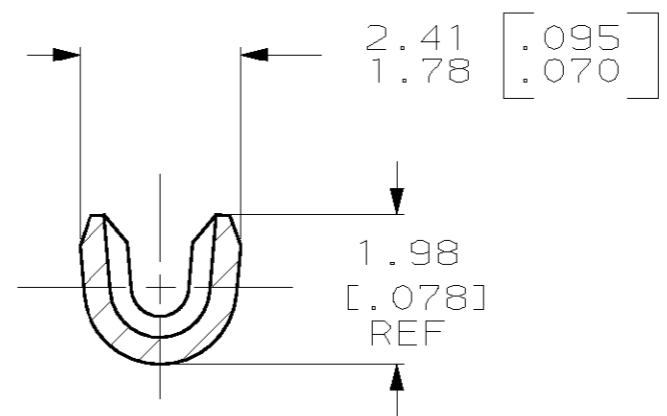
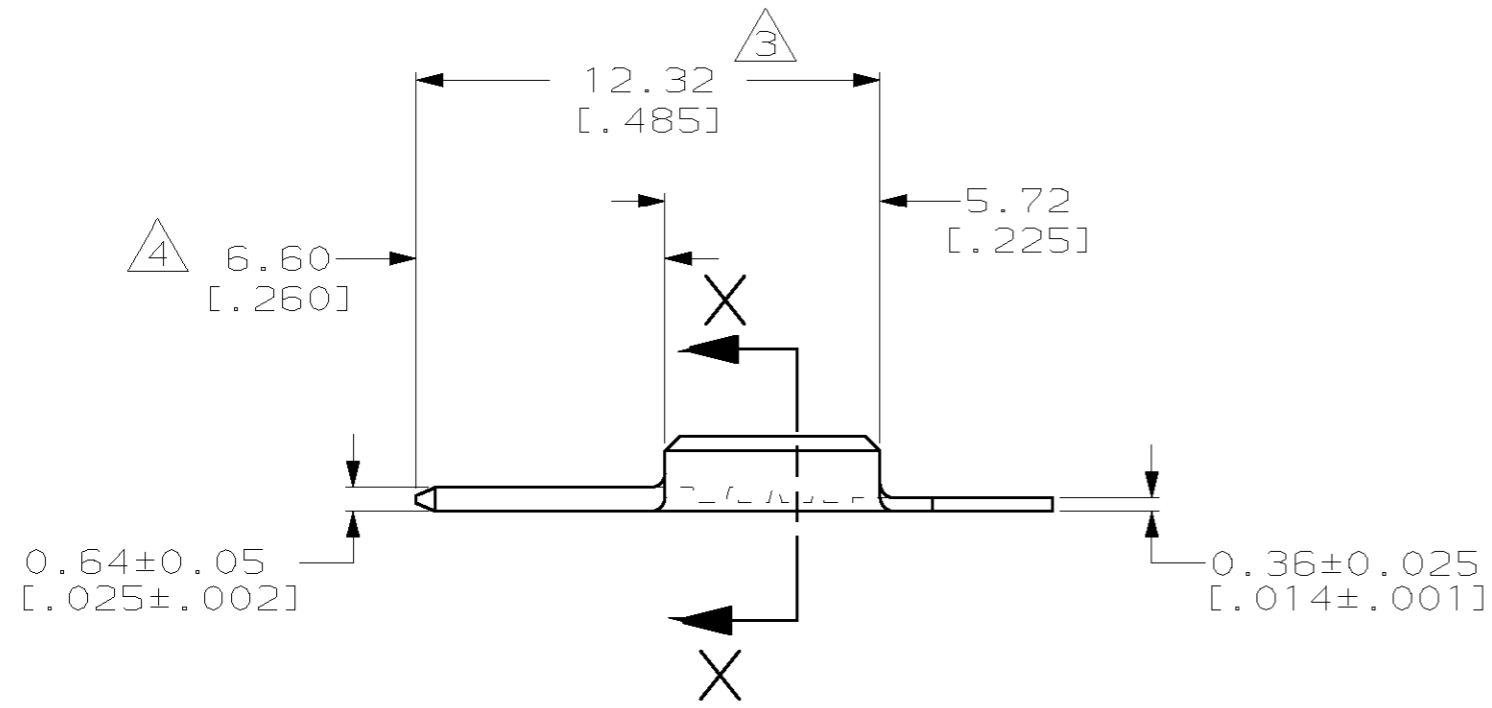
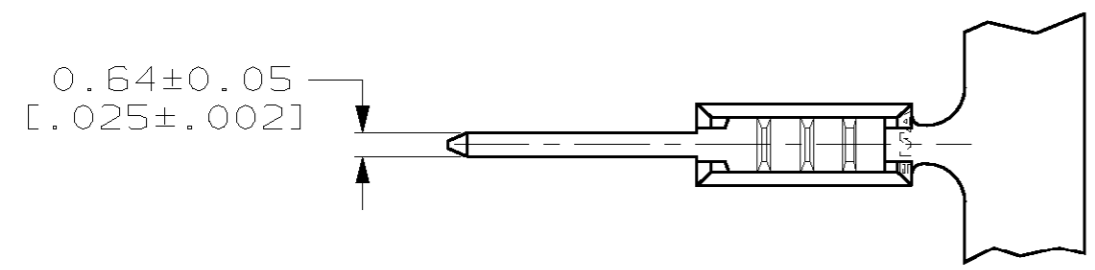
2

1

THIS DRAWING IS UNPUBLISHED. RELEASED FOR PUBLICATION ,19 .  
 © COPYRIGHT 19 BY AMP INCORPORATED. ALL RIGHTS RESERVED.

LOC	DIST	REVISIONS			
P	LTR	DESCRIPTION	DATE	DWN	APVD
AF	50	J	REDRAWN PER 0G3A-0478-00	18JUL00	JR GP

- 1 CONTINUOUS STRIP ON REELS
- 2 WIRE SIZE - TINSEL WIRE  
INSULATION RANGE 0.76-0.89 [.030-.035] DIA.
- △3 GOLD PLATE OVER THIS AREA SHOWN.
- △4 GOLD FLASH THIS AREA ONLY OVER NICKEL PLATE THE ENTIRE LENGTH.
- △5 0.002032 [.000080] MIN TIN OVER 0.00127 [.000050] MIN NICKEL.
- △6 PRELIMINARY - NOT FOR PRODUCTION



REVERSE REEL OF -1	△5	△6	61684-5
REVERSE REEL OF -1	△4		61684-3
REVERSE REEL OF -1	△3		61684-2
	△3		61684-1
REMARKS	FINISH	PART NO.	

THIS DRAWING IS A CONTROLLED DOCUMENT.		DWN	JR RUTH	18JUL00	<b>AMP</b> AMP Incorporated Harrisburg, PA 17105-3608
DIMENSIONS: MM [INCHES]		CHK	MS FEHER	18JUL00	
TOLERANCES UNLESS OTHERWISE SPECIFIED:		APVD	G PORTA	18JUL00	
0 PLC ±-		PRODUCT SPEC		NAME	
1 PLC ±-		-		-	
2 PLC ±0.25 [.010]		APPLICATION SPEC		-	
3 PLC ±-		-		-	
4 PLC ±-		-		-	
ANGLES ±-		WEIGHT		-	
MATERIAL	H04 BRASS	FINISH		SEE TABLE	
CUSTOMER DRAWING		SIZE	A3	CAGE CODE	00779
		DRAWING NO	C- 61684		RESTRICTED TO
		SCALE	5:1	SHEET	1 OF 1
		REV	J		