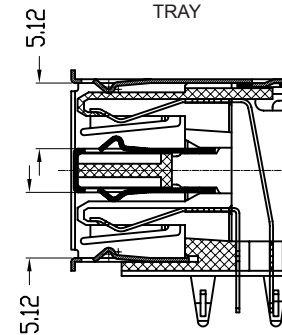
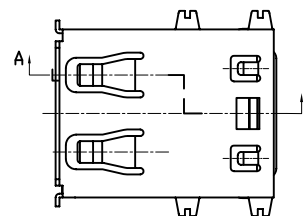
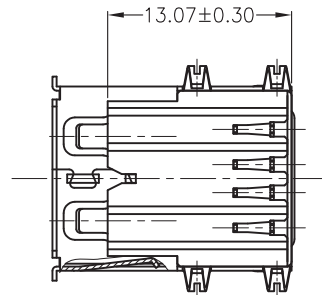


RECOMMENDED P.C.B HOLE LAYOUT
TOP VIEW(TOLERANCE:±0.10)



SECTION A-A
SCALE 1:1

TECHNICAL CHARACTERISTICS

MATERIAL
INSULATOR: PBT
FLAMABILITY RATING: UL94-V0
COLOR: WHITE
CONTACT MATERIAL: COPPER ALLOYS
CONTACT TYPE: STAMPED
CONTACT PLATING: SELECTIVE GOLD
SHIELDING: BRASS Ni PLATED
QUALITY CLASS: 1500 MATING CYCLES

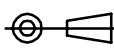

ENVIRONMENTAL
OPERATING TEMPERATURE: -40 UP TO 105°C
COMPLIANCE: LEAD FREE AND ROHS

ELECTRICAL
CURRENT RATING: 1.5 A
WORKING VOLTAGE: 30V
INSULATOR RESISTANCE: >1000 MOHM
DIELECTRIC WITHSTANDING VOLTAGE: 750V AC/MN
CONTACT RESISTANCE: 20 mOHM MAX

STANDARD
CERTIFIED: E323964 / MODEL NUMBER 614-60

SOLDERING
WAVE PROCESS ONLY

PACKAGING
TRAY

RoHS Compliant				<div>PROJECTION: </div>	<div>GENERAL TOLERANCE .X = \pm 0.2 .XX = \pm 0.15</div>	<div> WÜRTH ELEKTRONIK</div>	
K	23-MAY-13	CURRENT RATING	QL	APPROVAL: RJ	UNIT: MM	DESCRIPTION: DUAL USB 2.0 TYPE A HORIZONTAL	SIZE
J	15-FEV-13	DESIGNATION	AR		SCALE:		
I	25-SEP-12	DESCRIPTION	GG		SHEET: 1/1	WERI PART NO: 614 008 260 21	A4
H	09-JAN-12	NEW DRAWING	GG		DRAW: MIKE		
REV	DATE	FILE	BY				