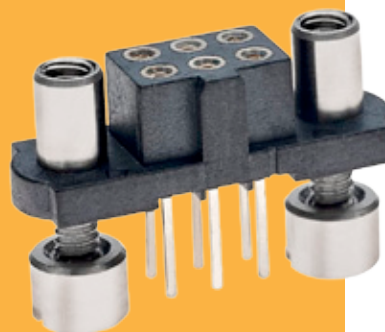


Female Vertical PC Tail Reverse Fix

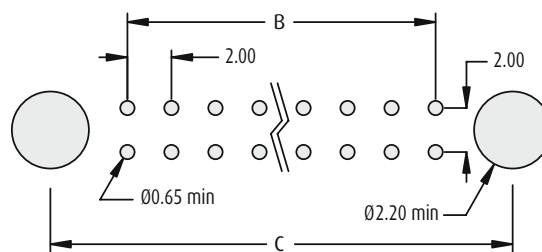
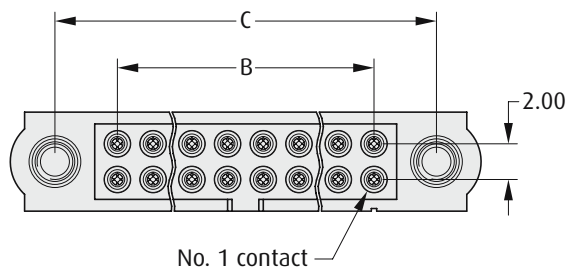
- Fully shrouded contacts.
- Polarised mouldings.
- Includes board mount fixing, and mates with male connectors shown on page 62.



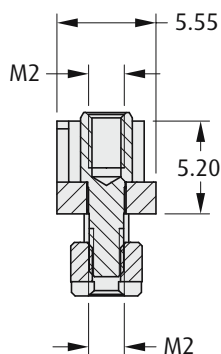
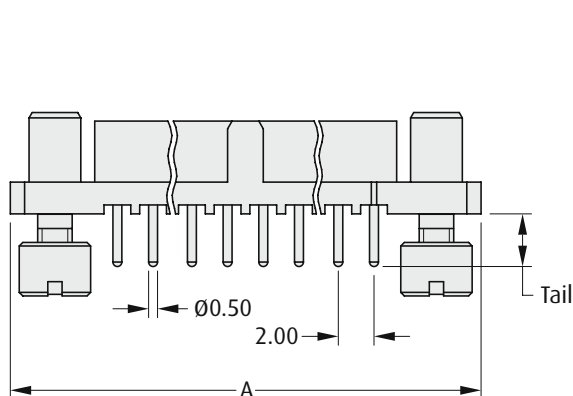
REVERSE FIX

CALCULATION

A	$B + 12$
B	Total no. of contacts - 2
C	$B + 7$



Recommended PC Board Pattern



HOW TO ORDER

M80 - 40 X XX XX

SERIES CODE

TYPE

5	3mm Tails
6	4.5mm Tails

FINISH

01	Gold + Tin/Lead	
05	Gold	
42	Gold + Tin	

TOTAL NO. OF CONTACTS

04 to 50

Even numbers only

All dimensions in mm.