



## Accessories

### Identification

### Part No.

#### Test adapter SMA – Mini Coax

male for straight modules

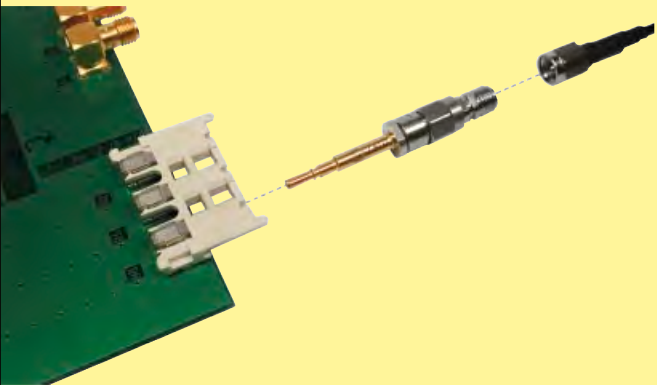
07 73 000 0394

female for angled modules

07 73 000 0393

### General information

The Mini Coax-to-SMA Adapter can be directly connected to measurement instrument cables. This allows the precise RF transmission characterization of module cards, backplanes and cable assemblies.



#### Features:

- SMA connector directly attached to the Mini Coax
- Impedance deviations between adapters < 1.5  $\Omega$
- Good reproducibility of test results
- Test results between different labs are comparable
- Precise measurements of Mini Coax connector system

### Electrical characteristics

| Mini Coax test adapter | Impedance values @ 31.5 ps rise time at reference plane (10% - 90%): |                   | Max. impedance deviation [ $\Omega$ ] |
|------------------------|--|-------------------|---------------------------------------|
|                        | Max. [ $\Omega$ ]  | Min. [ $\Omega$ ] |                                       |
| SMA to male            | 52.5   | 47.5              | 1.5                                   |
| SMA to female          | 53.5   | 48.0<br>40.5*     | 1.0                                   |

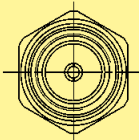
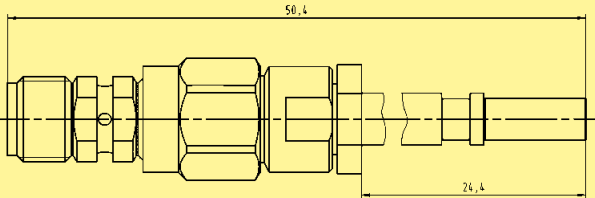
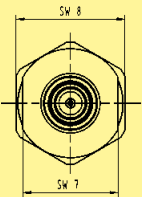
| Connector                          | Electrical length [ps] |
|------------------------------------|------------------------|
| Mated SMA to male / female adapter | 262.2                  |

| Frequency [GHz] | Return loss [dB] mated adapter pairs | Insertion loss [dB] mated adapter pairs |
|-----------------|--------------------------------------|---|
| < 1             | - 26.9                               | - 0.17                                  |
| < 2             | - 22.5                               | - 0.24                                  |
| < 3             | - 19.9                               | - 0.26                                  |
| < 4             | - 16.4                               | - 0.34                                  |
| < 5             | - 14.4                               | - 0.42                                  |

\*: Impedance drop is due to the female Mini Coax connector design.

### Dimensions [mm]

#### Male test adapter



#### Female test adapter

