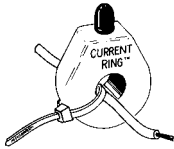
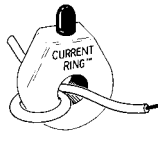


## CR45 Series

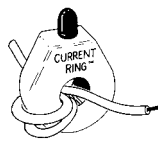
## MB45 Bracket



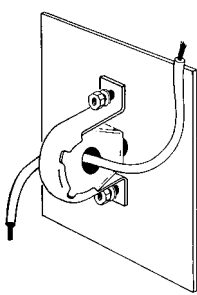
One-Wire Pass



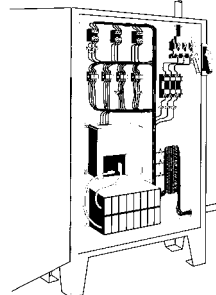
Two-Wire Passes



Three-Wire Passes



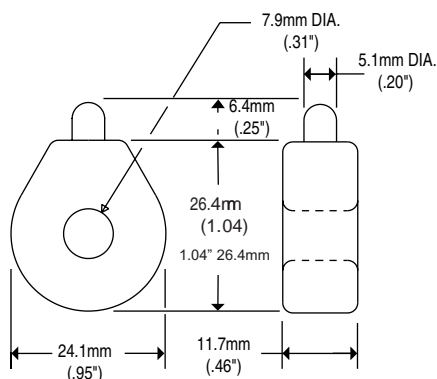
Panel Mount



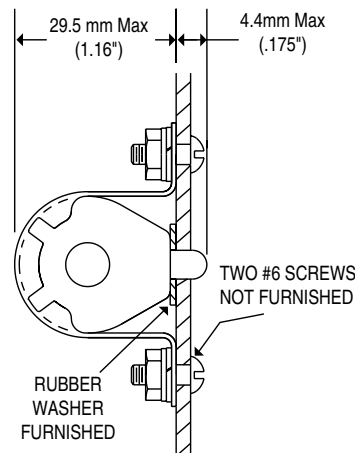
Load Center

### PART NUMBERS

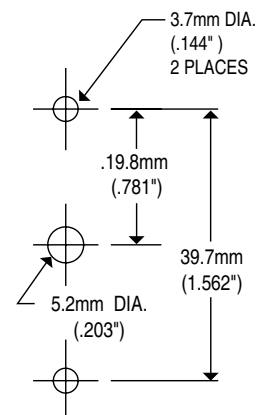
Part Number	LED Color	Turn On Point (1 pass)
CR45-R	Red	2.0 AAC
CR45-G	Green	2.5 AAC
CR45-B	Blue	2.0 AAC
CR45-W	White	2.0 AAC
CR45-Y	Yellow	2.0 AAC
CR45-A	Amber	2.0 AAC
MB45	Panel Mounting Bracket	



CR-45



MB45



Recommended Mounting Hole Pattern

The **CR45** Series, Wire Mounted Electrical Current Indicators provide an effective method of monitoring electrical current. The indicator is attached directly to a current-carrying wire. When the current exceeds the turn-on point, the LED will illuminate to indicate the presence of current.

### Applications

Monitor Status of Heater Elements

Observe Remote Loads

Indicate Phase Loss

Monitor Motor Operation

### Features

Self Powered

Red, Green, Blue, White, Yellow and Amber Indicators

Easy to Install

Supplied with a plastic wire tie

Bright Yellow Case for Easy Identification

Panel Mounting Bracket available

### Specifications

100 AAC Max, 600 VAC Max rating

Thermoplastic Case Material

14.2 g / 0.5 oz weight

50 - 1Khz Bandwidth

-10°C to +85°C Operating Temperature

Mounting Bracket Non-Magnetic Aluminum Material

Weight 0.03 LBS.

### Regulatory Agencies



CR Magnetics, Inc. 3500 Scarlet Oak Blvd. St. Louis MO USA 63122 V: 636-343-8518 F: 636-343-5119

Web: <http://www.crmagnetics.com>

E-mail: [sales@crmagnetics.com](mailto:sales@crmagnetics.com)