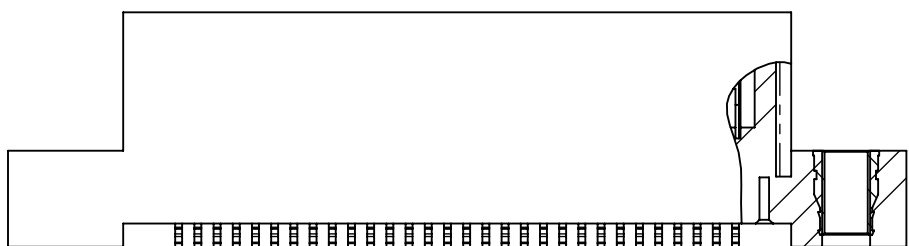
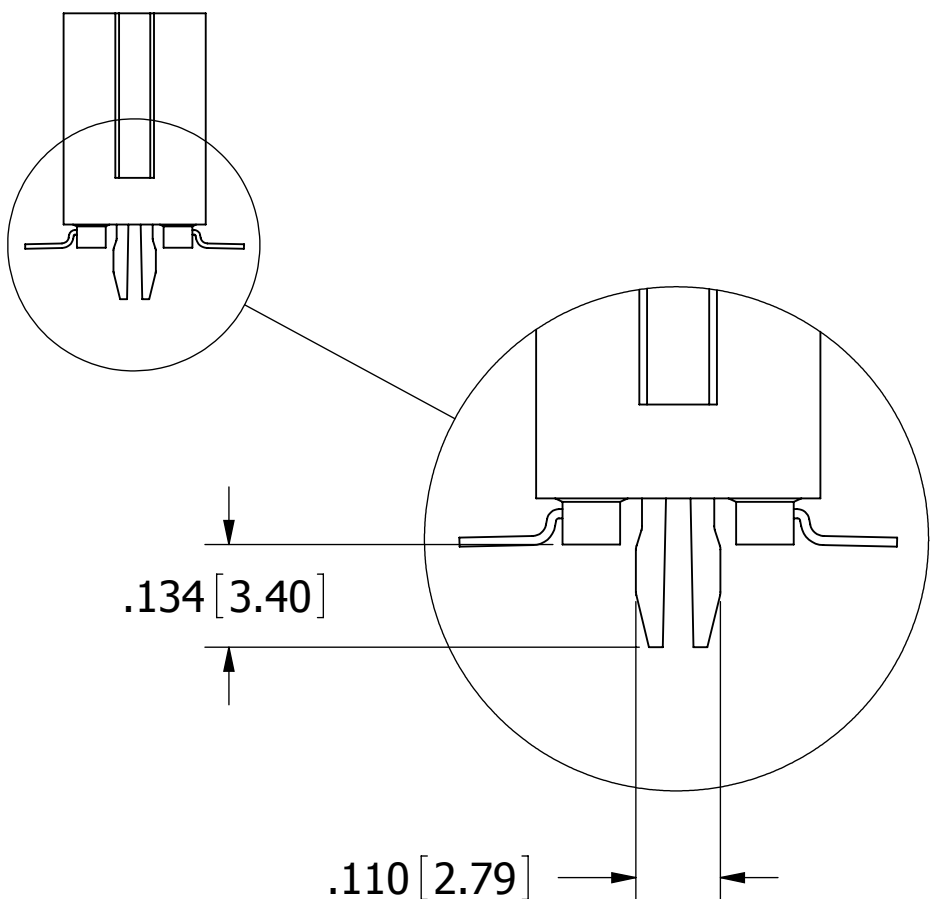
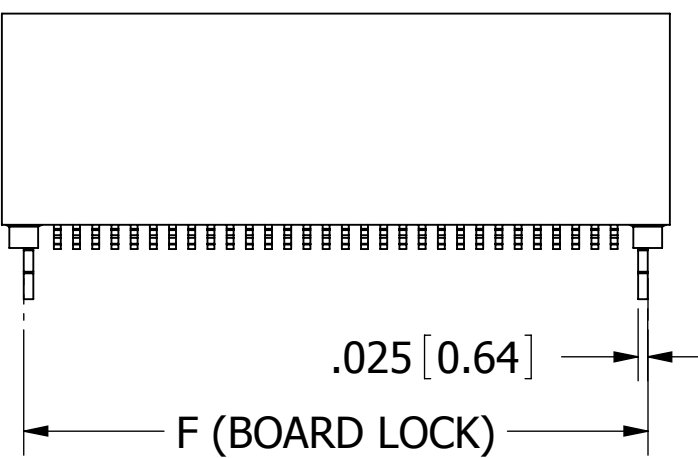
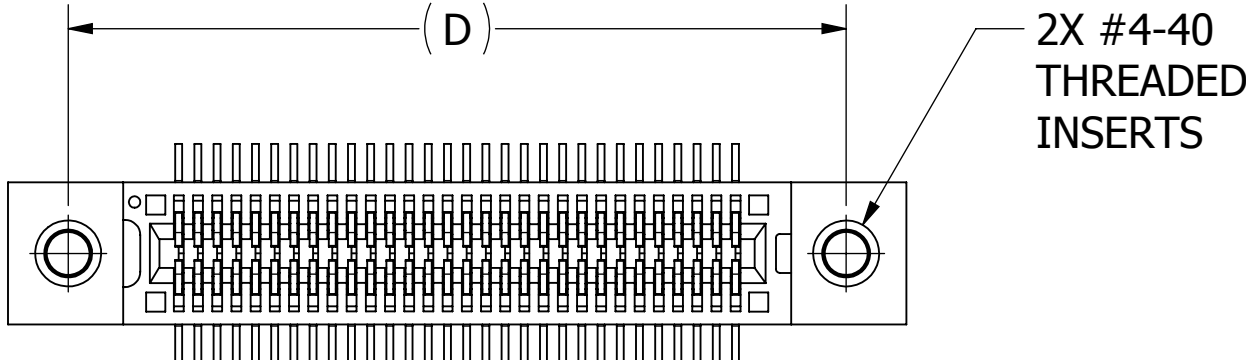


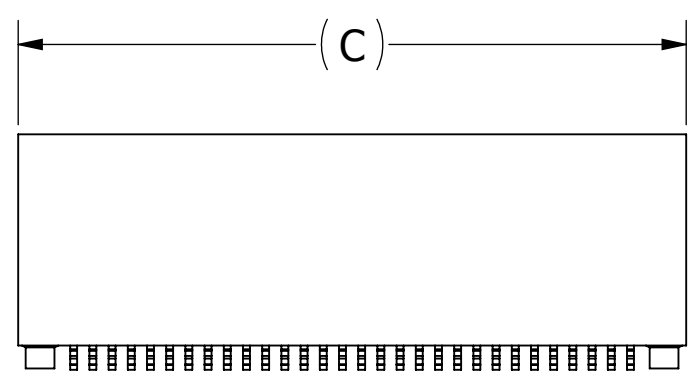
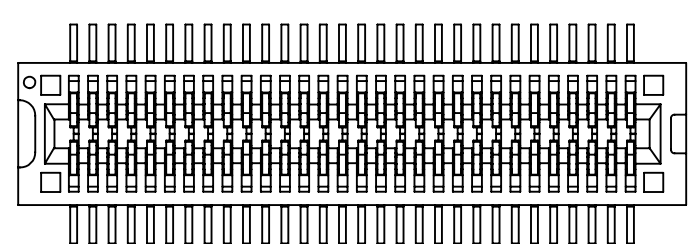
8 7 6 5 4 3 2 1

F
E
D
C
B
A

F
E
D
C
B
A



__B__DHFT



__B__DHFN

MATERIALS (INSULATOR / CONTACT)

- R = PPS/PHOSPHOR BRONZE**
OPERATING TEMP: -65°C TO +125°C
PROCESSING TEMP: 260°C FOR 120 SECS MAX
- G = PA9T/PHOSPHOR BRONZE**
OPERATING TEMP: -65°C TO +125°C
PROCESSING TEMP: 260°C FOR 120 SECS MAX
- A = PPS/BERYLLIUM COPPER**
OPERATING TEMP: -65°C TO +150°C
PROCESSING TEMP: 260°C FOR 120 SECS MAX
- J = PA9T/BERYLLIUM COPPER**
OPERATING TEMP: -65°C TO +150°C
PROCESSING TEMP: 260°C FOR 120 SECS MAX
- (CONSULT FACTORY FOR OTHER MATERIALS)

PART NUMBER CODING

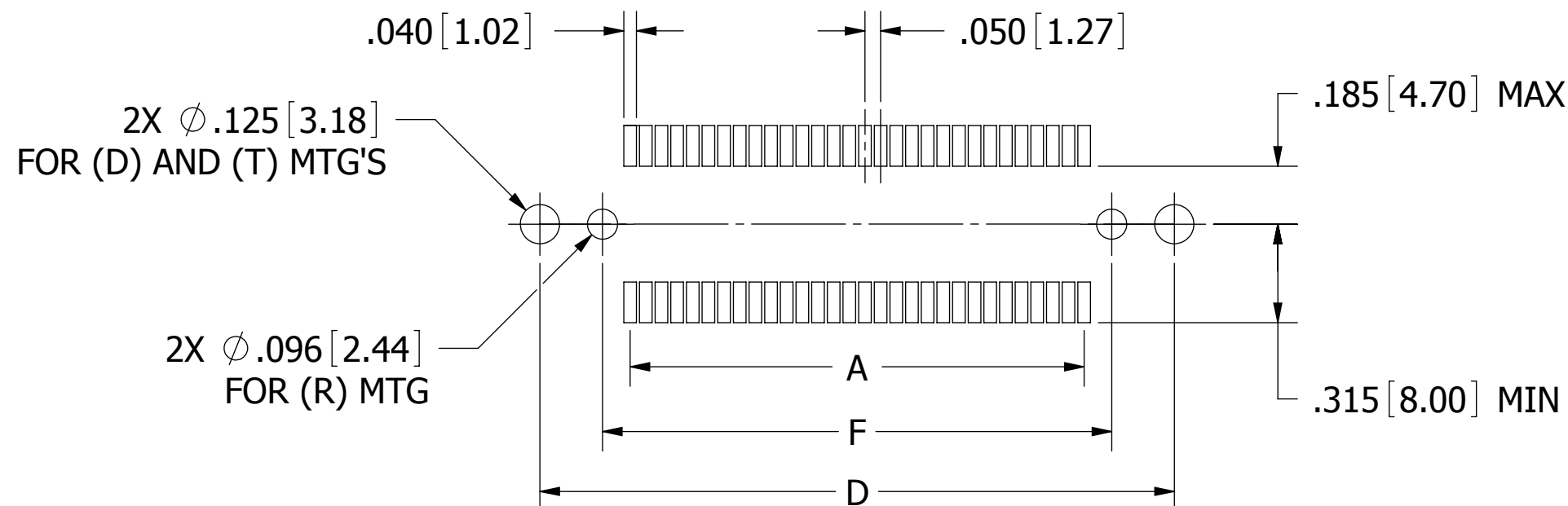
__B__DHF__

**NUMBER OF POSITIONS
(CONTACTS PER ROW)**

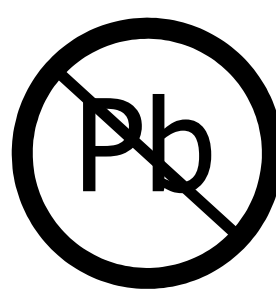
MOUNTING STYLE
D = FLUSH MOUNTING (PAGE 1)
N = NO MOUNTING EARS
T = FLUSH MOUNTING WITH #4-40 THREADED INSERT
R = BOARD LOCK

PLATING
ALL PLATINGS ARE LEAD FREE AND HAVE .000050" NICKEL UNDERPLATE

CONTACT SURFACE TERMINATION
B = .000010" GOLD .000100" PURE TIN, MATTE
C = .000030" GOLD .000100" PURE TIN, MATTE



RECOMMENDED PCB LAYOUT



RoHS COMPLIANT

CUSTOMER COPY

| | | | | | |
|---|--|--|--------------------------------------|------------|----------|
| UNLESS OTHERWISE SPECIFIED: DIMENSIONS ARE IN INCHES[MM] TOLERANCES: ANGULAR: ± 30' .XX=± .02 [.508] .XXX=± .005 [.1270] .XXXX=± .0005 [.0127] SURFACE FINISH: 63 Rq REMOVE ALL BURRS AND SHARP EDGES .010 MAX | | | DRAWN 4/28/06 | DATE HT | NAME |
| THE INFORMATION HEREIN CONTAINS PROPRIETARY INFORMATION OF SULLINS ELECTRONICS AND IS NOT TO BE REPRODUCED, USED OR DISCLOSED TO OTHERS FOR ANY PURPOSE EXCEPT AS SPECIFICALLY AUTHORIZED IN WRITING BY AN OFFICER OF SULLINS ELECTRONICS. | | | | | |
| INTERPRET DIMENSIONS AND GEOMETRIC TOLERANCING PER: ANSI Y14.5M-1994 | | | DESCRIPTION EDGECARD, .050 CC, HP | | |
| SIZE C | | | DWG. NO. C10708 | | REV C |
| SCALE: 2:1 | | | SHEET 2 OF 3 | | |

| PART NUMBER | NO OF POS. | A±.005[0.13] | | B±.005[0.13] | | C±.015[0.38] | | D±.010[0.25] | | E±.020[0.51] | | F±.010[0.25] | |
|-------------|------------|--------------|-------|--------------|-------|--------------|-------|--------------|-------|--------------|--------|--------------|-------|
| | | IN | MM | IN | MM | IN | MM | IN | MM | IN | MM | IN | MM |
| __B05DHF__ | 5 | 0.200 | 5.08 | 0.300 | 7.62 | 0.490 | 12.45 | 0.776 | 19.71 | 1.090 | 27.69 | 0.350 | 8.89 |
| __B06DHF__ | 6 | 0.250 | 6.35 | 0.350 | 8.89 | 0.540 | 13.72 | 0.826 | 20.98 | 1.140 | 28.96 | 0.400 | 10.16 |
| __B07DHF__ | 7 | 0.300 | 7.62 | 0.400 | 10.16 | 0.590 | 14.99 | 0.876 | 22.25 | 1.190 | 30.23 | 0.450 | 11.43 |
| __B08DHF__ | 8 | 0.350 | 8.89 | 0.450 | 11.43 | 0.640 | 16.26 | 0.926 | 23.52 | 1.240 | 31.50 | 0.500 | 12.70 |
| __B09DHF__ | 9 | 0.400 | 10.16 | 0.500 | 12.70 | 0.690 | 17.53 | 0.976 | 24.79 | 1.290 | 32.77 | 0.550 | 13.97 |
| __B10DHF__ | 10 | 0.450 | 11.43 | 0.550 | 13.97 | 0.740 | 18.80 | 1.026 | 26.06 | 1.340 | 34.04 | 0.600 | 15.24 |
| __B11DHF__ | 11 | 0.500 | 12.70 | 0.600 | 15.24 | 0.790 | 20.07 | 1.076 | 27.33 | 1.390 | 35.31 | 0.650 | 16.51 |
| __B12DHF__ | 12 | 0.550 | 13.97 | 0.650 | 16.51 | 0.840 | 21.34 | 1.126 | 28.60 | 1.440 | 36.58 | 0.700 | 17.78 |
| __B13DHF__ | 13 | 0.600 | 15.24 | 0.700 | 17.78 | 0.890 | 22.61 | 1.176 | 29.87 | 1.490 | 37.85 | 0.750 | 19.05 |
| __B14DHF__ | 14 | 0.650 | 16.51 | 0.750 | 19.05 | 0.940 | 23.88 | 1.226 | 31.14 | 1.540 | 39.12 | 0.800 | 20.32 |
| __B15DHF__ | 15 | 0.700 | 17.78 | 0.800 | 20.32 | 0.990 | 25.15 | 1.276 | 32.41 | 1.590 | 40.39 | 0.850 | 21.59 |
| __B16DHF__ | 16 | 0.750 | 19.05 | 0.850 | 21.59 | 1.040 | 26.42 | 1.326 | 33.68 | 1.640 | 41.66 | 0.900 | 22.86 |
| __B17DHF__ | 17 | 0.800 | 20.32 | 0.900 | 22.86 | 1.090 | 27.69 | 1.376 | 34.95 | 1.690 | 42.93 | 0.950 | 24.13 |
| __B18DHF__ | 18 | 0.850 | 21.59 | 0.950 | 24.13 | 1.140 | 28.96 | 1.426 | 36.22 | 1.740 | 44.20 | 1.000 | 25.40 |
| __B19DHF__ | 19 | 0.900 | 22.86 | 1.000 | 25.40 | 1.190 | 30.23 | 1.476 | 37.49 | 1.790 | 45.47 | 1.050 | 26.67 |
| __B20DHF__ | 20 | 0.950 | 24.13 | 1.050 | 26.67 | 1.240 | 31.50 | 1.526 | 38.76 | 1.840 | 46.74 | 1.100 | 27.94 |
| __B21DHF__ | 21 | 1.000 | 25.40 | 1.100 | 27.94 | 1.290 | 32.77 | 1.576 | 40.03 | 1.890 | 48.01 | 1.150 | 29.21 |
| __B22DHF__ | 22 | 1.050 | 26.67 | 1.150 | 29.21 | 1.340 | 34.04 | 1.626 | 41.30 | 1.940 | 49.28 | 1.200 | 30.48 |
| __B23DHF__ | 23 | 1.100 | 27.94 | 1.200 | 30.48 | 1.390 | 35.31 | 1.676 | 42.57 | 1.990 | 50.55 | 1.250 | 31.75 |
| __B24DHF__ | 24 | 1.150 | 29.21 | 1.250 | 31.75 | 1.440 | 36.58 | 1.726 | 43.84 | 2.040 | 51.82 | 1.300 | 33.02 |
| __B25DHF__ | 25 | 1.200 | 30.48 | 1.300 | 33.02 | 1.490 | 37.85 | 1.776 | 45.11 | 2.090 | 53.09 | 1.350 | 34.29 |
| __B26DHF__ | 26 | 1.250 | 31.75 | 1.350 | 34.29 | 1.540 | 39.12 | 1.826 | 46.38 | 2.140 | 54.36 | 1.400 | 35.56 |
| __B27DHF__ | 27 | 1.300 | 33.02 | 1.400 | 35.56 | 1.590 | 40.39 | 1.876 | 47.65 | 2.190 | 55.63 | 1.450 | 36.83 |
| __B28DHF__ | 28 | 1.350 | 34.29 | 1.450 | 36.83 | 1.640 | 41.66 | 1.926 | 48.92 | 2.240 | 56.90 | 1.500 | 38.10 |
| __B29DHF__ | 29 | 1.400 | 35.56 | 1.500 | 38.10 | 1.690 | 42.93 | 1.976 | 50.19 | 2.290 | 58.17 | 1.550 | 39.37 |
| __B30DHF__ | 30 | 1.450 | 36.83 | 1.550 | 39.37 | 1.740 | 44.20 | 2.026 | 51.46 | 2.340 | 59.44 | 1.600 | 40.64 |
| __B31DHF__ | 31 | 1.500 | 38.10 | 1.600 | 40.64 | 1.790 | 45.47 | 2.076 | 52.73 | 2.390 | 60.71 | 1.650 | 41.91 |
| __B32DHF__ | 32 | 1.550 | 39.37 | 1.650 | 41.91 | 1.840 | 46.74 | 2.126 | 54.00 | 2.440 | 61.98 | 1.700 | 43.18 |
| __B33DHF__ | 33 | 1.600 | 40.64 | 1.700 | 43.18 | 1.890 | 48.01 | 2.176 | 55.27 | 2.490 | 63.25 | 1.750 | 44.45 |
| __B34DHF__ | 34 | 1.650 | 41.91 | 1.750 | 44.45 | 1.940 | 49.28 | 2.226 | 56.54 | 2.540 | 64.52 | 1.800 | 45.72 |
| __B35DHF__ | 35 | 1.700 | 43.18 | 1.800 | 45.72 | 1.990 | 50.55 | 2.276 | 57.81 | 2.590 | 65.79 | 1.850 | 46.99 |
| __B36DHF__ | 36 | 1.750 | 44.45 | 1.850 | 46.99 | 2.040 | 51.82 | 2.326 | 59.08 | 2.640 | 67.06 | 1.900 | 48.26 |
| __B37DHF__ | 37 | 1.800 | 45.72 | 1.900 | 48.26 | 2.090 | 53.09 | 2.376 | 60.35 | 2.690 | 68.33 | 1.950 | 49.53 |
| __B38DHF__ | 38 | 1.850 | 46.99 | 1.950 | 49.53 | 2.140 | 54.36 | 2.426 | 61.62 | 2.740 | 69.60 | 2.000 | 50.80 |
| __B39DHF__ | 39 | 1.900 | 48.26 | 2.000 | 50.80 | 2.190 | 55.63 | 2.476 | 62.89 | 2.790 | 70.87 | 2.050 | 52.07 |
| __B40DHF__ | 40 | 1.950 | 49.53 | 2.050 | 52.07 | 2.240 | 56.90 | 2.526 | 64.16 | 2.840 | 72.14 | 2.100 | 53.34 |
| __B41DHF__ | 41 | 2.000 | 50.80 | 2.100 | 53.34 | 2.290 | 58.17 | 2.576 | 65.43 | 2.890 | 73.41 | 2.150 | 54.61 |
| __B42DHF__ | 42 | 2.050 | 52.07 | 2.150 | 54.61 | 2.340 | 59.44 | 2.626 | 66.70 | 2.940 | 74.68 | 2.200 | 55.88 |
| __B43DHF__ | 43 | 2.100 | 53.34 | 2.200 | 55.88 | 2.390 | 60.71 | 2.676 | 67.97 | 2.990 | 75.95 | 2.250 | 57.15 |
| __B44DHF__ | 44 | 2.150 | 54.61 | 2.250 | 57.15 | 2.440 | 61.98 | 2.726 | 69.24 | 3.040 | 77.22 | 2.300 | 58.42 |
| __B45DHF__ | 45 | 2.200 | 55.88 | 2.300 | 58.42 | 2.490 | 63.25 | 2.776 | 70.51 | 3.090 | 78.49 | 2.350 | 59.69 |
| __B46DHF__ | 46 | 2.250 | 57.15 | 2.350 | 59.69 | 2.540 | 64.52 | 2.826 | 71.78 | 3.140 | 79.76 | 2.400 | 60.96 |
| __B47DHF__ | 47 | 2.300 | 58.42 | 2.400 | 60.96 | 2.590 | 65.79 | 2.876 | 73.05 | 3.190 | 81.03 | 2.450 | 62.23 |
| __B48DHF__ | 48 | 2.350 | 59.69 | 2.450 | 62.23 | 2.640 | 67.06 | 2.926 | 74.32 | 3.240 | 82.30 | 2.500 | 63.50 |
| __B49DHF__ | 49 | 2.400 | 60.96 | 2.500 | 63.50 | 2.690 | 68.33 | 2.976 | 75.59 | 3.290 | 83.57 | 2.550 | 64.77 |
| __B50DHF__ | 50 | 2.450 | 62.23 | 2.550 | 64.77 | 2.740 | 69.60 | 3.026 | 76.86 | 3.340 | 84.84 | 2.600 | 66.04 |
| __B51DHF__ | 51 | 2.500 | 63.50 | 2.600 | 66.04 | 2.790 | 70.87 | 3.076 | 78.13 | 3.390 | 86.11 | 2.650 | 67.31 |
| __B52DHF__ | 52 | 2.550 | 64.77 | 2.650 | 67.31 | 2.840 | 72.14 | 3.126 | 79.40 | 3.440 | 87.38 | 2.700 | 68.58 |
| __B53DHF__ | 53 | 2.600 | 66.04 | 2.700 | 68.58 | 2.890 | 73.41 | 3.176 | 80.67 | 3.490 | 88.65 | 2.750 | 69.85 |
| __B54DHF__ | 54 | 2.650 | 67.31 | 2.750 | 69.85 | 2.940 | 74.68 | 3.226 | 81.94 | 3.540 | 89.92 | 2.800 | 71.12 |
| __B55DHF__ | 55 | 2.700 | 68.58 | 2.800 | 71.12 | 2.990 | 75.95 | 3.276 | 83.21 | 3.590 | 91.19 | 2.850 | 72.39 |
| __B56DHF__ | 56 | 2.750 | 69.85 | 2.850 | 72.39 | 3.040 | 77.22 | 3.326 | 84.48 | 3.640 | 92.46 | 2.900 | 73.66 |
| __B57DHF__ | 57 | 2.800 | 71.12 | 2.900 | 73.66 | 3.090 | 78.49 | 3.376 | 85.75 | 3.690 | 93.73 | 2.950 | 74.93 |
| __B58DHF__ | 58 | 2.850 | 72.39 | 2.950 | 74.93 | 3.140 | 79.76 | 3.426 | 87.02 | 3.740 | 95.00 | 3.000 | 76.20 |
| __B59DHF__ | 59 | 2.900 | 73.66 | 3.000 | 76.20 | 3.190 | 81.03 | 3.476 | 88.29 | 3.790 | 96.27 | 3.050 | 77.47 |
| __B60DHF__ | 60 | 2.950 | 74.93 | 3.050 | 77.47 | 3.240 | 82.30 | 3.526 | 89.56 | 3.840 | 97.54 | 3.100 | 78.74 |
| __B61DHF__ | 61 | 3.000 | 76.20 | 3.100 | 78.74 | 3.290 | 83.57 | 3.576 | 90.83 | 3.890 | 98.81 | 3.150 | 80.01 |
| __B62DHF__ | 62 | 3.050 | 77.47 | 3.150 | 80.01 | 3.340 | 84.84 | 3.626 | 92.10 | 3.940 | 100.08 | 3.200 | 81.28 |
| __B63DHF__ | 63 | 3.100 | 78.74 | 3.200 | 81.28 | 3.390 | 86.11 | 3.676 | 93.37 | 3.990 | 101.35 | 3.250 | 82.55 |

| PART NUMBER | NO OF POS. | A±.005[0.13] | | B±.005[0.13] | | C±.015[0.38] | | D±.010[0.25] | | E±.020[0.51] | | F±.010[0.25] | |
|-------------|------------|--------------|--------|--------------|--------|--------------|--------|--------------|--------|--------------|--------|--------------|--------|
| | | IN | MM | IN | MM | IN | MM | IN | MM | IN | MM | IN | MM |
| __B64DHF__ | 64 | 3.150 | 80.01 | 3.250 | 82.55 | 3.440 | 87.38 | 3.726 | 94.64 | 4.040 | 102.62 | 3.300 | 83.82 |
| __B65DHF__ | 65 | 3.200 | 81.28 | 3.300 | 83.82 | 3.490 | 88.65 | 3.776 | 95.91 | 4.090 | 103.89 | 3.350 | 85.09 |
| __B66DHF__ | 66 | 3.250 | 82.55 | 3.350 | 85.09 | 3.540 | 89.92 | 3.826 | 97.18 | 4.140 | 105.16 | 3.400 | 86.36 |
| __B67DHF__ | 67 | 3.300 | 83.82 | 3.400 | 86.36 | 3.590 | 91.19 | 3.876 | 98.45 | 4.190 | 106.43 | 3.450 | 87.63 |
| __B68DHF__ | 68 | 3.350 | 85.09 | 3.450 | 87.63 | 3.640 | 92.46 | 3.926 | 99.72 | 4.240 | 107.70 | 3.500 | 88.90 |
| __B69DHF__ | 69 | 3.400 | 86.36 | 3.500 | 88.90 | 3.690 | 93.73 | 3.976 | 100.99 | 4.290 | 108.97 | 3.550 | 90.17 |
| __B70DHF__ | 70 | 3.450 | 87.63 | 3.550 | 90.17 | 3.740 | 95.00 | 4.026 | 102.26 | 4.340 | 110.24 | 3.600 | 91.44 |
| __B71DHF__ | 71 | 3.500 | 88.90 | 3.600 | 91.44 | 3.790 | 96.27 | 4.076 | 103.53 | 4.390 | 111.51 | 3.650 | 92.71 |
| __B72DHF__ | 72 | 3.550 | 90.17 | 3.650 | 92.71 | 3.840 | 97.54 | 4.126 | 104.80 | 4.440 | 112.78 | 3.700 | 93.98 |
| __B73DHF__ | 73 | 3.600 | 91.44 | 3.700 | 93.98 | 3.890 | 98.81 | 4.176 | 106.07 | 4.490 | 114.05 | 3.750 | 95.25 |
| __B74DHF__ | 74 | 3.650 | 92.71 | 3.750 | 95.25 | 3.940 | 100.08 | 4.226 | 107.34 | 4.540 | 115.32 | 3.800 | 96.52 |
| __B75DHF__ | 75 | 3.700 | 93.98 | 3.800 | 96.52 | 3.990 | 101.35 | 4.276 | 108.61 | 4.590 | 116.59 | 3.850 | 97.79 |
| __B76DHF__ | 76 | 3.750 | 95.25 | 3.850 | 97.79 | 4.040 | 102.62 | 4.326 | 109.88 | 4.640 | 117.86 | 3.900 | 99.06 |
| __B77DHF__ | 77 | 3.800 | 96.52 | 3.900 | 99.06 | 4.090 | 103.89 | 4.376 | 111.15 | 4.690 | 119.13 | 3.950 | 100.33 |
| __B78DHF__ | 78 | 3.850 | 97.79 | 3.950 | 100.33 | 4.140 | 105.16 | 4.426 | 112.42 | 4.740 | 120.40 | 4.000 | 101.60 |
| __B79DHF__ | 79 | 3.900 | 99.06 | 4.000 | 101.60 | 4.190 | 106.43 | 4.476 | 113.69 | 4.790 | 121.67 | 4.050 | 102.87 |
| __B80DHF__ | 80 | 3.950 | 100.33 | 4.050 | 102.87 | 4.240 | 107.70 | 4.526 | 114.96 | 4.840 | 122.94 | 4.100 | 104.14 |
| __B81DHF__ | 81 | 4.000 | 101.60 | 4.100 | 104.14 | 4.290 | 108.97 | 4.576 | 116.23 | 4.890 | 124.21 | 4.150 | 105.41 |
| __B82DHF__ | 82 | 4.050 | 102.87 | 4.150 | 105.41 | 4.340 | 110.24 | 4.626 | 117.50 | 4.940 | 125.48 | 4.200 | 106.68 |
| __B83DHF__ | 83 | 4.100 | 104.14 | 4.200 | 106.68 | 4.390 | 111.51 | 4.676 | 118.77 | 4.990 | 126.75 | 4.250 | 107.95 |
| __B84DHF__ | 84 | 4.150 | 105.41 | 4.250 | 107.95 | 4.440 | 112.78 | 4.726 | 120.04 | 5.040 | 128.02 | 4.300 | 109.22 |
| __B85DHF__ | 85 | 4.200 | 106.68 | 4.300 | 109.22 | 4.490 | 114.05 | 4.776 | 121.31 | 5.090 | 129.29 | 4.350 | 110.49 |
| __B86DHF__ | 86 | 4.250 | 107. | | | | | | | | | | |