

## TECHNICAL CHARACTERISTICS

### SPECIFICATION

- >**Contact Rating:**
  - Switching: 25mA, 24VDC
  - Non-Switching: 100mA, 50VDC
- >**Contact Resistance:**
  - Initial: 50mOHM max.
  - After Life Test: 100mOHM max.
- >**Insulation Resistance:** min. 100MOHM at 500VDC
- >**Dielectric Strength:** 300VAC for 1 minute
- >**Operating Force:** 500g max.
- >**Mechanical Life:** min. 2000 cycles
- >**Electrical Life:** 1000 cycles / 25mA, 24VDC
- >**Flat Actuator with top tape sealed**

### MATERIAL

- >**Cover:** PPS UL 94V-0, color Black
- >**Base:** PPS UL 94V-0, color Black
- >**Actuator:** PA 46 UL HB, color White
- >**Tape:** Polyimide Tape
- >**Contact:** Gold Plated
- >**Terminal:** Gold Plated

### SOLDERING INFORMATION

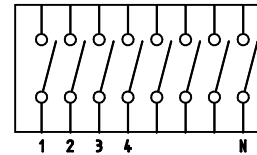
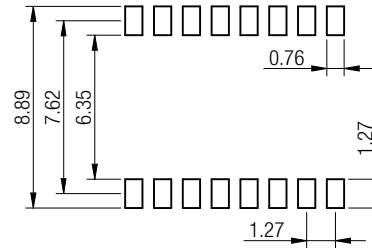
- >**Terminal in SMD version**
- >**Reflow Soldering according to JEDEC J-STD 020 Hot Air**  
3 cycles max.
- >**Keep in "off" position during soldering**
- >**For cleaning or washing only with top tape sealed**
- >**VPH Heating Process only with top taped sealed**

### ENVIRONMENTAL:

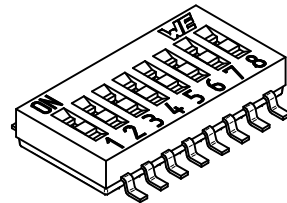
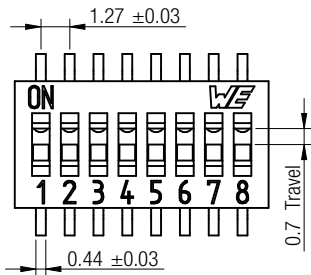
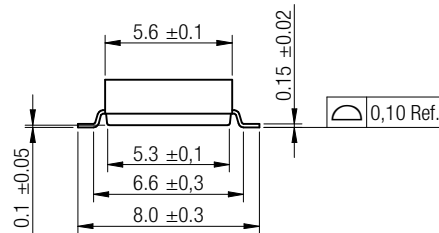
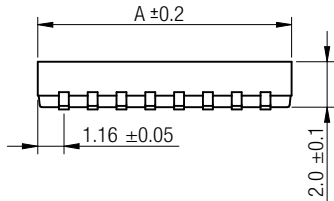
- >**Storage condition:** -40°C ~ +85°C
- >**Operating condition:** -40°C ~ +85°C
- >**Compliance:** Lead Free, ROHS, Reach

### PACKAGING INFORMATION

- >**Tape & Reel packaging**
- >**On delivery in "off" position**



Wiring Diagram




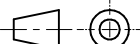

Scale - 3:1

DIMENSION												
No.Of Pole	1	2	3	4	5	6	8	10	12			
Dim. A (mm)	2.31	3.58	4.85	6.12	7.39	8.66	11.20	13.74	16.28			

This electronic component is designed and developed with the intention for use in general electronics equipments.

Before incorporating the components into any equipments in the field such as aerospace, aviation, nuclear control, submarine, transportation, (automotive control, train control, ship control), transportation signal, disaster prevention, medical, public information network etc. where higher safety and reliability are especially required or if there is possibility of direct damage or injury to human body, Würth Elektronik must be asked for a written approval.

In addition, even electronic component in general electronic equipments, when used in electrical circuits that require high safety, reliability functions or performance, the sufficient reliability evaluation-check for the safety must be performed before by the user before usage.

		Projection 		GENERAL TOLERANCE  .x = +/- 0,2 .xx = +/- 0,15		Basic material					
				Date	Name	DESCRIPTION WE-SWITCH_HP-type, SMD version flat actuator with top tape sealed					
				Drawn	09-02-25						Jelisarow
				Checked							
				 Würth Elektronik RDX		Scale	3:1	Position		SIZE	
b	warning text	11-10-26	WJ			Drawing.- No. 4161311608xx				A4	
a	Actuator: HB was 94V-0	11-08-26	WJ								
REV	FILE	DATE	BY	EDV NO	4161311608xx.dft	System: Solid Edge V20					