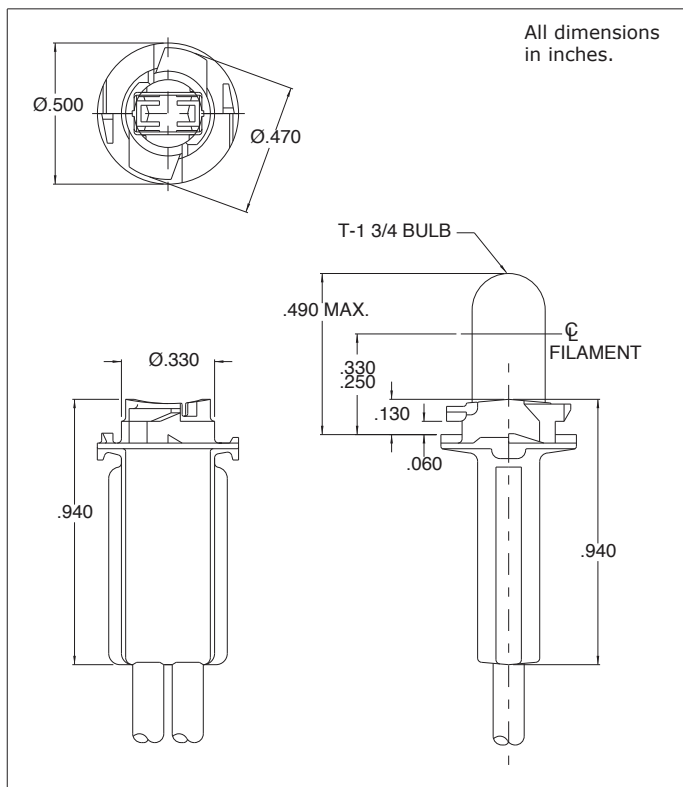


## 4106 Series Relampable Socket

### Description and Features



#### Features

Mounting: Rear twist insertion in .060 thick plastic panels or .050/.055 thick metal panels. Mounting hole pattern on page SP3.

Wire Leads: No. 20 AWG, 4.40/4.8 long, stripped .430/.570, color: black

Lamp: T-1 3/4 Wedge base

Housing: Black nylon

Note: Available with other leads and/or terminals on special order. Lamps must be ordered separately.