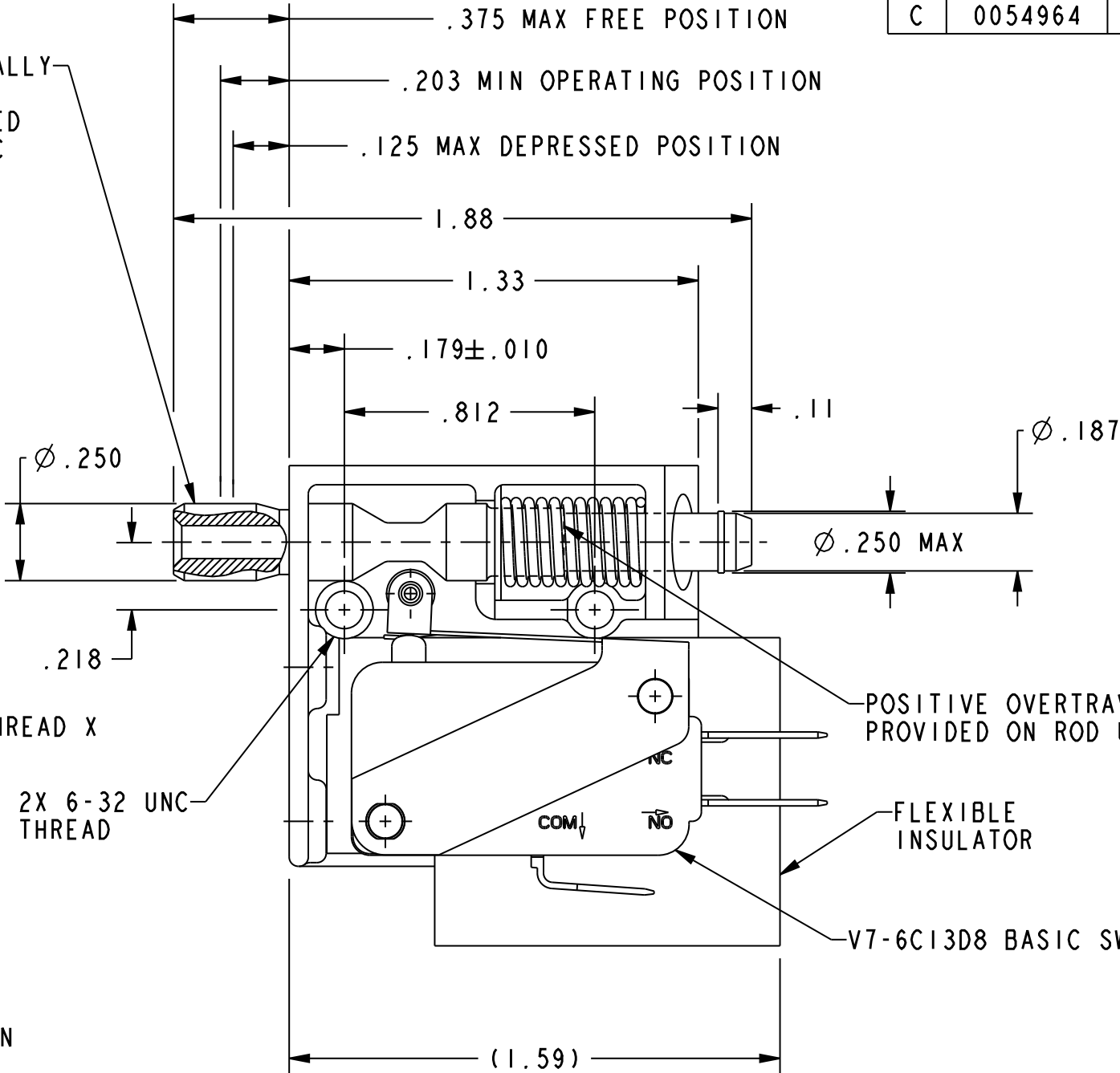
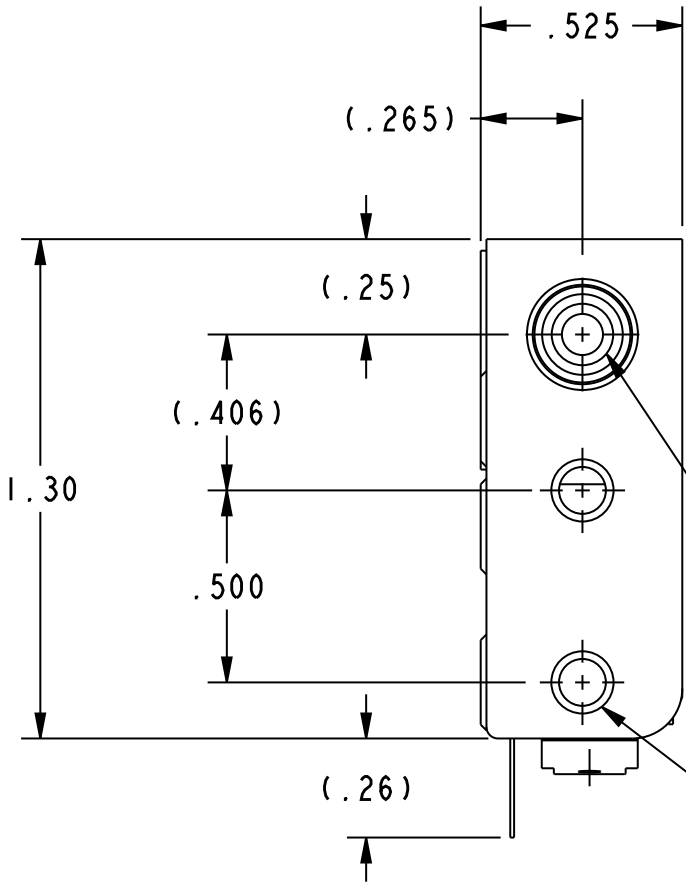


HONEYWELL PART NUMBER
2AC110
PRODUCT CODE
KCB0701

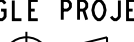
REV	DOCUMENT	CHANGED BY	CHECK
C	0054964	KNR 28JUL09	CMH

PUSH TO OPERATE-RETURNS AUTOMATICALLY
TO POSITION SHOWN
PULL TO OPERATE-REMAINS IN OPERATED
POSITION UNTIL RESET FOR AUTOMATIC
RETURN BY NEXT FULL STROKE "PUSH"
OPERATION



- NOTES:
- 1 - NOTCH IN ACTUATOR ROD WILL PERMIT .035 DISPLACEMENT BETWEEN
END OF ROD AND HOLE IN BRACKET
 - 2 - WITH ROD IN EITHER ACTUATED POSITION, BASIC SWITCH PLUNGER
MUST HAVE .010 MIN OVERTRAVEL AND WITH ROD IN FREE POSITION
BASIC SWITCH PLUNGER MUST HAVE .005 MIN RELEASE TRAVEL

REPLACES : X200442-AC

CHARACTERISTICS		ELECTRICAL DATA		DESIGN UNITS: INCH TOLERANCES UNLESS NOTED:		DRAWN KNR 28JUL09 CHECK SS 28JUL09		Honeywell					
TOTAL TRAVEL .250 APPROX PUSH DIRECTION .187 APPROX PULL DIRECTION FULLY DEPRESSED FORCE - 4LBS MAX		CONTACT ARRANGEMENT S P D T		NO PLACES X ± .040 ONE PLACE .X ± .030 TWO PLACE .XX ± .015 THREE PLACE .XXX ± .005 ANGLES X ± 2°		THIS DRAWING COVERS A PROPRIETARY ITEM AND IS THE PROPERTY OF HONEYWELL. THIS DRAWING IS NOT TO BE COPIED OR USED WITHOUT THE PERMISSION OF HONEYWELL.		TITLE ASSEMBLY-SWITCH					
		15.1A 1/2HP 125, 250 VAC 1/2A 125 VDC, 1/4A 250 VDC 5A 125 VAC "L"		THIRD ANGLE PROJECTION 		INTERPRET PER ASME Y14.5M-1994 OTHER HONEYWELL ENGINEERING STANDARDS MAY APPLY		SIZE B	TYPE I	CAGE CODE -	DRAWING NAME 2AC110		REV C
						Pro/ENGINEER 3D		SCALE 2 : 1				SHEET 1 OF 1	