

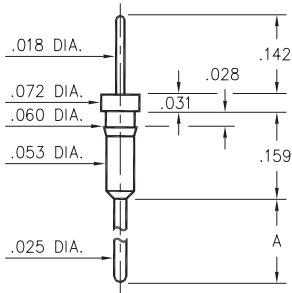
MALE PCB PINS

PRINTED CIRCUIT PINS

3409

3409-X-00-XX-00-00-03-0

Press-fit in .057 mounting hole

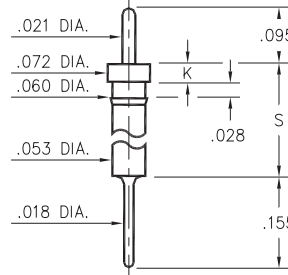


Basic Part Number	Pin Length A
3409-1	.210
3409-2	.420

0315

0315-0-00-XX-00-00-03-0

Press-fit in .057 mounting hole
Pin material is Phosphor Bronze 544 (B2)

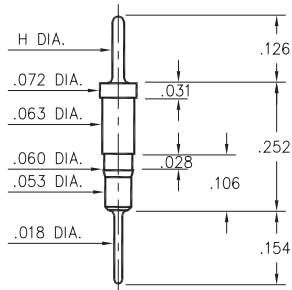


Basic Part Number	Head Height K	Standoff Height S
0315-0	.030	.190
0315-1	.040	.430

5503/5509

550X-X-00-XX-00-00-03-0

Press-fit in .057 mounting hole

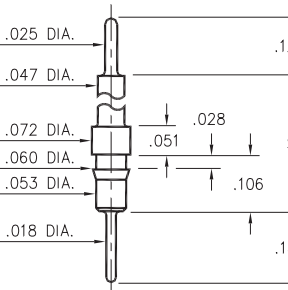


Basic Part Number	Pin Diameter H
5503-0	.025
5509-0	.018

5504/5505

550X-0-00-XX-00-00-03-0

Press-fit in .057 mounting hole

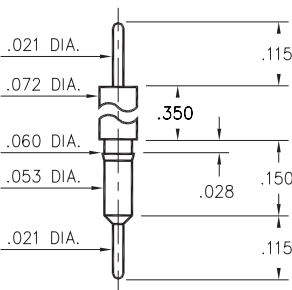


Basic Part Number	Standoff Height S
5504-0	.331
5505-0	.606

3406

3406-0-00-XX-00-00-03-0

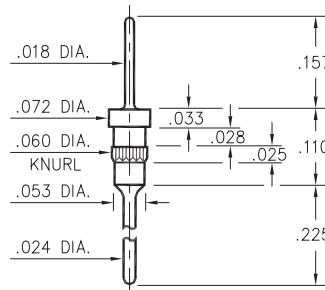
Press-fit in .057 mounting hole



5011

5011-0-00-XX-00-00-03-0

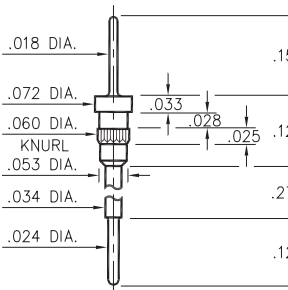
Press-fit in .057 mounting hole



5113

5113-0-00-XX-00-00-03-0

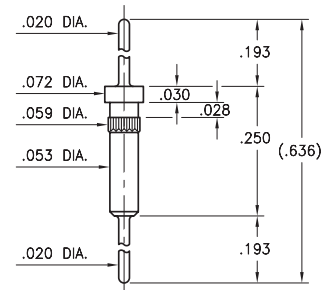
Press-fit in .057 mounting hole



3900

3900-0-00-15-00-00-03-0

Press-fit in .057 mounting hole



SPECIFICATIONS:

Pin Material: Brass Alloy 360, 1/2 Hard
(Except where noted)

Dimensions: Inches

Tolerances On: Lengths: ±.005
Diameters: ±.002
Angles: ±2°



ORDER CODE: XXXX - X - 00 - XX - 00 - 00 - 03 - 0

BASIC PART #

SPECIFY PIN FINISH:

- 01 200 μ" TIN/LEAD OVER NICKEL
- ◆ 80 200 μ" TIN OVER NICKEL (RoHS)
- ◆ 15 10 μ" GOLD OVER NICKEL (RoHS)
- ◆ 21 20 μ" GOLD OVER NICKEL (RoHS)
- ◆ 34 50 μ" GOLD OVER NICKEL (RoHS)

