

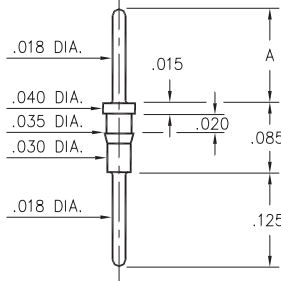
MALE PCB PINS

PRINTED CIRCUIT PINS

8685/9036

XXXX-0-00-XX-00-00-03-0

Press-fit in .033 mounting hole
Pin material is Phosphor Bronze 544 (B2)

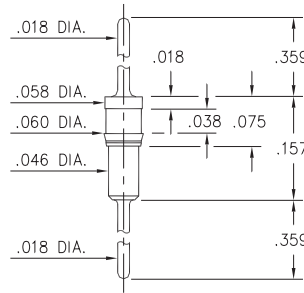


Basic Part Number	Length A
8685-0	.125
9036-0	.175

9051

9051-0-00-XX-00-00-03-0

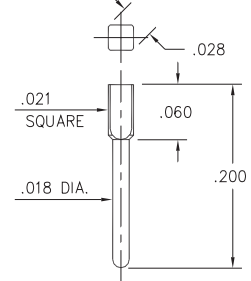
Press-fit in .057 mounting hole



8969

8969-0-05-XX-00-00-03-0

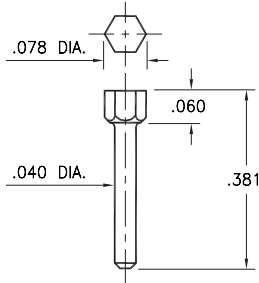
Square press-fit in .023 plated through-hole
(Use .7mm drill prior to plating)



8979

8979-0-00-XX-00-00-03-0

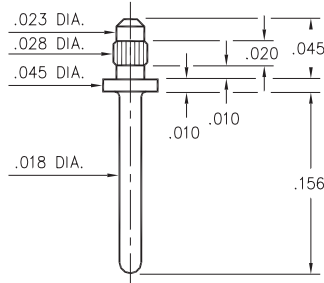
Hex press-fit in .074 plated through-hole



9159

9159-0-00-XX-00-00-03-0

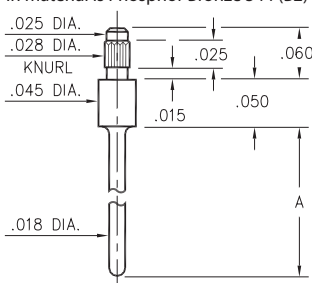
Press-fit in .026 mounting hole



3155/5155

X155-0-00-XX-00-00-03-0

Press-fit in .026 mounting hole
Pin material is Phosphor Bronze 544 (B2)

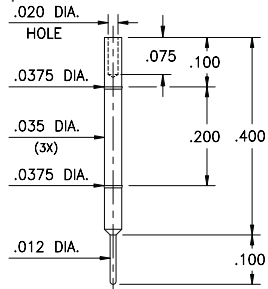


Basic Part Number	Length A
3155-0	.180
5155-0	.130

4194

4194-0-00-XX-00-00-08-0

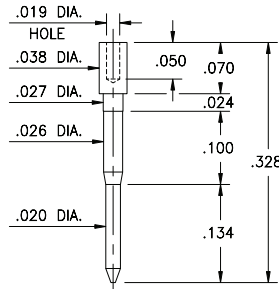
Wire termination and press-fit in .036 hole
Accepts wire sizes 30 AWG Max. / 36 AWG Min.



5556

5556-0-00-XX-00-00-38-0

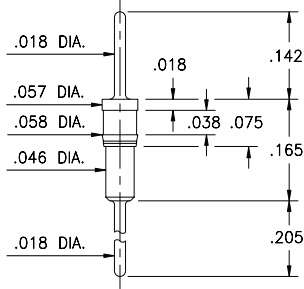
Wire termination. Accepts wire sizes 30 AWG Max. / 36 AWG Min.



3790

3790-0-00-XX-00-00-03-0

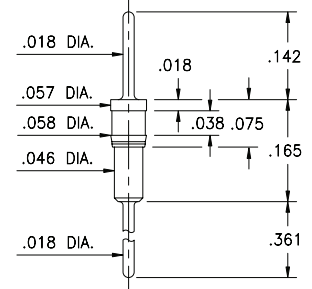
Press-fit in .057 mounting hole



3796

3796-0-00-XX-00-00-03-0

Press-fit in .057 mounting hole



SPECIFICATIONS:

Pin Material: Brass Alloy 360, 1/2 Hard
(Except where noted)

Dimensions: Inches

Tolerances On: Lengths: ±.005
Diameters: ±.002
Angles: ±2°



ORDER CODE: XXXX - X - 0X - XX - 00 - 00 - XX - 0

BASIC PART #

SPECIFY PIN FINISH:

- 01 200 μ" TIN/LEAD OVER NICKEL
- ◆ 80 200 μ" TIN OVER NICKEL (RoHS)
- ◆ 15 10 μ" GOLD OVER NICKEL (RoHS)
- ◆ 21 20 μ" GOLD OVER NICKEL (RoHS)
- ◆ 34 50 μ" GOLD OVER NICKEL (RoHS)

