

1

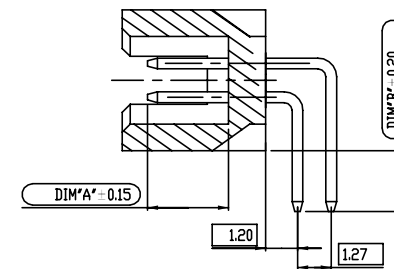
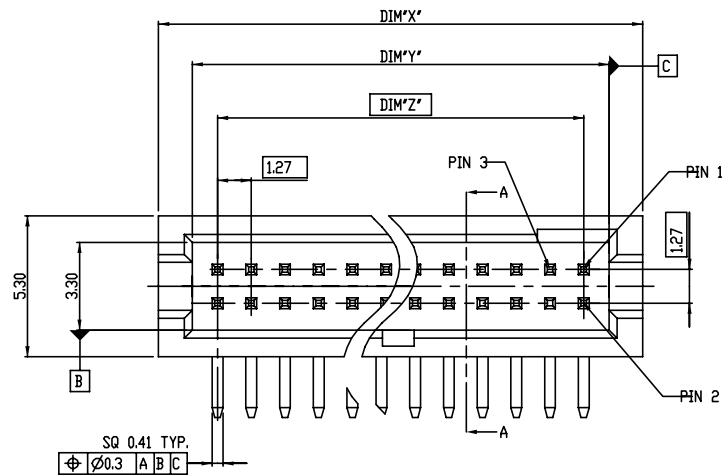
2

3

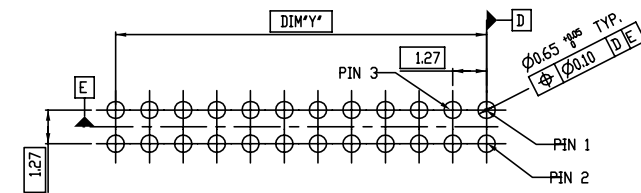
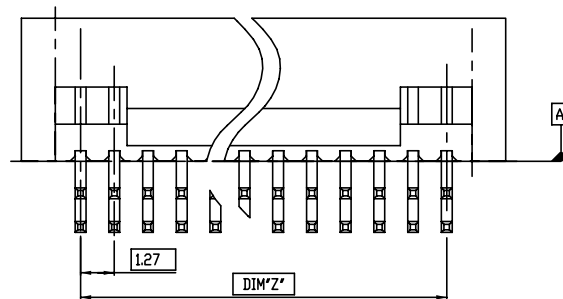
4

PART NO.

20021212



SECTION A-A



RECOMMENDED PCB LAYOUT

SCALE 5.000

NOTES:

- 1.MATERIAL:
HOUSING: HIGH TEMPERATURE THERMOPLASTIC, UL94-V0 BLACK.
TERMINAL: COPPER ALLOY
- 2.THE HOUSING WILL WITHSTAND EXPOSURE TO 260-C PEAK TEMPERATURE FOR 10 SECONDS IN A WAVE SOLDER OR VAPOR PHASE REFLOW OVEN.
- 3.THIS PRODUCT MEETS EUROPEAN UNION DIRECTIVES AND OTHER COUNTRY REGULATIONS AS DESCRIBED IN GS-22-008.
- 4.PRODUCT SPEC: GS-12-629
- 5.PACKAGE SPEC: GS-14-1420

spec ref				dr ZK HU		2012-8-7				size A3		scale 5.000	
tolerance std		TOLERANCES UNLESS OTHERWISE SPECIFIED		eng ZK HU		2012-8-7				pcn no ELX-N-14374			
ISO 1101				chr RICK BIAN		2012-8-7							
ISO 406				appr RICK BIAN		2012-8-7							
								product family				rel level RELEASED	
 surface ISO 1302		linear				title MINITEK 127 SHROUDED HDR RA TH		dwg no 20021212		rev D			
												0.X ± 0.30	
		0.XX ± 0.20											
		0.XXX ± 0.10											
		angular 0~ ± 2°		www.fci.com		cat. no.		Product - Customer Drw				sheet 1 of 2	

MINITEK 127 SHROUDED HDR
RA TH

www.fci.com

Product - Customer Drw

sheet 1 of 2

PDS: Rev :D

STATUS:Released

Printed: Mar 29, 2013

1

2

3

4

1

2

3




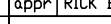
4

PART NO.	POS.	DIM"X"	DIM"Y"	DIM"Z"
20021212-XXX06XXLF	2 X 3	6.99	4.45	2.54
20021212-XXX08XXLF	2 X 4	8.26	5.72	3.81
20021212-XXX010XXLF	2 X 5	9.53	6.99	5.08
20021212-XXX12XXLF	2 X 6	10.80	8.26	6.35
20021212-XXX14XXLF	2 X 7	12.07	9.53	7.62
20021212-XXX16XXLF	2 X 8	13.34	10.80	8.89
20021212-XXX18XXLF	2 X 9	14.61	12.07	10.16
20021212-XXX20XXLF	2 X 10	15.88	13.34	11.43
20021212-XXX22XXLF	2 X 11	17.15	14.61	12.70
20021212-XXX24XXLF	2 X 12	18.42	15.88	13.97
20021212-XXX26XXLF	2 X 13	19.69	17.15	15.24
20021212-XXX28XXLF	2 X 14	20.96	18.42	16.51
20021212-XXX30XXLF	2 X 15	22.23	19.69	17.78
20021212-XXX32XXLF	2 X 16	23.50	20.96	19.05
20021212-XXX34XXLF	2 X 17	24.77	22.23	20.32
20021212-XXX36XXLF	2 X 18	26.04	23.50	21.59
20021212-XXX38XXLF	2 X 19	27.31	24.77	22.86
20021212-XXX40XXLF	2 X 20	28.58	26.04	24.13
20021212-XXX42XXLF	2 X 21	29.85	27.31	25.40
20021212-XXX44XXLF	2 X 22	31.12	28.58	26.67
20021212-XXX46XXLF	2 X 23	32.39	29.85	27.94
20021212-XXX48XXLF	2 X 24	33.66	31.12	29.21
20021212-XXX50XXLF	2 X 25	34.93	32.39	30.48
20021212-XXX52XXLF	2 X 26	36.20	33.66	31.75
20021212-XXX54XXLF	2 X 27	37.47	34.93	33.02
20021212-XXX56XXLF	2 X 28	38.74	36.20	34.29
20021212-XXX58XXLF	2 X 29	40.01	37.47	35.56
20021212-XXX60XXLF	2 X 30	41.28	38.74	36.83
20021212-XXX62XXLF	2 X 31	42.55	40.01	38.10
20021212-XXX64XXLF	2 X 32	43.82	41.28	39.37
20021212-XXX66XXLF	2 X 33	45.09	42.55	40.64
20021212-XXX68XXLF	2 X 34	46.36	43.82	41.91
20021212-XXX70XXLF	2 X 35	47.63	45.09	43.18
20021212-XXX72XXLF	2 X 36	48.90	46.36	44.45
20021212-XXX74XXLF	2 X 37	50.17	47.63	45.72
20021212-XXX76XXLF	2 X 38	51.44	48.90	46.99
20021212-XXX78XXLF	2 X 39	52.71	50.17	48.26
20021212-XXX80XXLF	2 X 40	53.98	51.44	49.53
20021212-XXX82XXLF	2 X 41	55.25	52.71	50.80
20021212-XXX84XXLF	2 X 42	56.52	53.98	52.07
20021212-XXX86XXLF	2 X 43	57.79	55.25	53.34
20021212-XXX88XXLF	2 X 44	59.06	56.52	54.61
20021212-XXX90XXLF	2 X 45	60.33	57.79	55.88

PART NO.	POS.	DIM"X"	DIM"Y"	DIM"Z"
20021212-XXX92XXLF	2 X 46	61.60	59.06	57.15
20021212-XXX94XXLF	2 X 47	62.87	60.33	58.42
20021212-XXX96XXLF	2 X 48	64.14	61.60	59.69
20021212-XXX98XXLF	2 X 49	65.41	62.87	60.96
20021212-XXXA0XXLF	2 X 50	66.68	64.14	62.23

20021212 - X X X XX X X LF

LEAD FREE
PLATING OPTIONAL
1: GOLD FLASH AT CONTACT, 1.27um MIN. MATTE TIN AT TAIL
2: GOLD FLASH AT CONTACT, GOLD FLASH AT TAIL
4: 0.25um Au MIN. AT CONTACT, 1.27um MIN.MATTE TIN AT TAIL
5: 0.25um Au MIN. AT CONTACT, GOLD FLASH AT TAIL
6: 0.38um GXT MIN. AT CONTACT, 1.27um MIN.MATTE TIN AT TAIL
7: 0.38um GXT MIN. AT CONTACT, GOLD FLASH AT TAIL
8: 0.76um GXT MIN. AT CONTACT, 1.27um MIN.MATTE TIN AT TAIL
9: 0.76um GXT MIN. AT CONTACT, GOLD FLASH AT TAIL
PACKING STYLE
T: TUBE
PIN NO. SEE TABLE
MATING LENGTH(DIM"A")
0: 3.05MM
TAIL LENGTH(DIM"B")
0: 2.30MM (FOR 1.6MM PCB)
1: 1.60MM (FOR 1.0MM PCB)
2: 2.70MM (FOR 2.0MM PCB)
RESERVE CODE
0: STANDARD

spec ref				dr	ZK HU	2012-8-7			size	A3	scale	5.000	
tolerance std ISO 1101 ISO 406	TOLERANCES UNLESS OTHERWISE SPECIFIED			eng	ZK HU	2012-8-7			scn no ELX-N-14374				
				chr	RICK BIAN	2012-8-7			rel level RELEASED				
				appr	RICK BIAN	2012-8-7			product family				
surface ISO 1302		linear	0.X	±0.30		title MINITEK 127 SHROUDED HDR RA TH	dwg no	20021212		rev D			
			0.XX	±0.20									
			0.XXX	±0.10									
	angular	0~	±2"	www.fci.com	cat. no.			Product - Customer Drw			sheet 2 of 2		

1

2

3

PDS: Rev :D

STATUS:Released

Printed: Mar 29, 2013