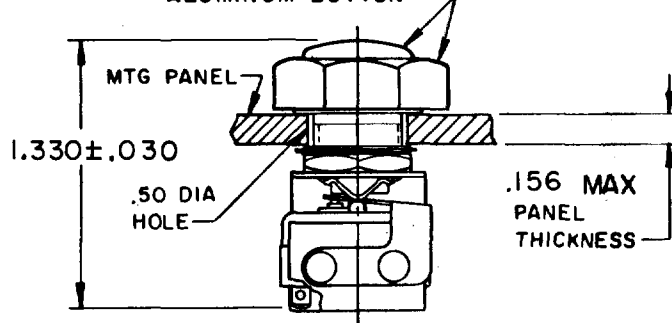
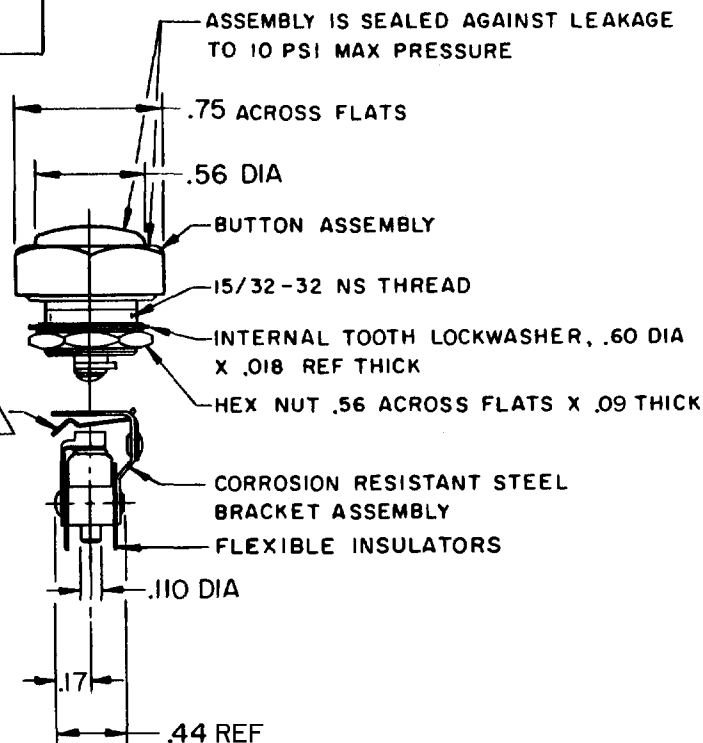
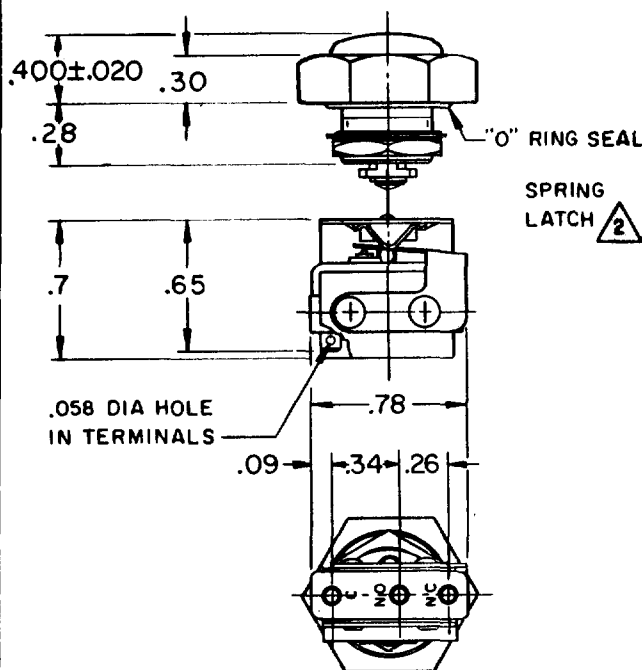


**MICRO SWITCH**FREEPORT, ILLINOIS, U.S.A.
A DIVISION OF HONEYWELL

FED. MFG. CODE 91929

**ASSEMBLY -
PUSHBUTTON SWITCH**

CATALOG LISTING

IPB 4BLACK ANODIZED
ALUMINUM BUTTON**ASSEMBLED DETAIL****NOTES**

- 1 - UNIT INCLUDES CATALOG LISTING "ISM" TYPE BASIC SWITCH
- 2 - SPRING LATCH PERMITS ASSEMBLY AND DISASSEMBLY AS REQUIRED
- 3 - "D" SHAPED HOLE IN SPRING LATCH PREVENTS ROTATION BETWEEN THE TWO PARTS
- 4 - ASSEMBLY IS COMPLETED AFTER INSTALLING BUTTON TO PANEL
- 5 - TERMINALS ARE PLATED FOR SOLDERING

THIS DRAWING COVERS A PROPRIETARY ITEM AND IS THE PROPERTY OF MICRO SWITCH, A DIVISION OF HONEYWELL. THIS DRAWING IS NOT TO BE COPIED OR USED WITHOUT THE APPROVAL OF MICRO SWITCH.

CHARACTERISTICSOPERATING FORCE — — 3 LB APPROX
6 LB MAX

PLUNGER TRAVEL — — — .031 APPROX

ELECTRICAL DATACONTACT ARRANGEMENT
S P D T250 VAC — — — — — 5 AMP
30 VOLTS DC RATINGINDUCTIVE — — — SEA LEVEL — — — 3 AMP
50,000 FT — — — 2.5 AMP
RESISTIVE — — — SEA LEVEL — — — 5 AMP
50,000 FT — — — 5 AMP
MAXIMUM INRUSH — — — — — 24 AMP

SCALE FULL

DO NOT SCALE PRINT

UNLESS OTHERWISE
NOTED

DIMENSIONS ARE IN INCHES

TOLERANCES ARE:ONE PLACE (.0) ±.030
TWO PLACE (.00) ±.015
THREE PLACE (.000) ±.005
ANGLES ±

WEIGHT .04 LB

IPB 4

PAGE 1 OF 1

MDRAWING
NUMBERISSUE
10

REPLACES

RELEASE NO.

CHECK

CHECK

5 APR 65

CHECK

5 APRIL 65

FORMTEK

FO-50378

DRAWN